

An illustration of a kindergarten playground. In the foreground, four children are playing on a red brick-paved area. One child is running on a curved path, another is crouching, and two others are standing. A flag on a pole is in the center. The background features a red wall with a circular window, two large trees, and a blue sky with a sun. The title 'KINDERGARTEN REHABILITATION IN BOLIVIA' is written in large white letters across the middle.

# KINDERGARTEN REHABILITATION IN BOLIVIA

RULES



An aerial photograph of a city, likely La Paz, Bolivia, showing a dense urban grid and a winding river. The city is built on a plateau, with the river flowing through a valley below. The image is used as a background for the title and the first paragraph of text.

# INTRODUCTION

Bolivia is a South American country enjoying a central position with no less than five neighbors: Peru, Chile, Argentina, Paraguay and Brazil.

Well known for having the highest capital city in the world (La Paz: administrative capital), its territory is deeply shaped by its geography. There are two main areas: the plains with a tropical or desert climate – depending on the region, and the high plateaus. The latter is called the Altiplano, varying between 3500m and 4000m in altitude, and boasts some of the highest peaks in the world. These two elements reflect in the culture and behaviour of Bolivians. Depending on the region, they identify themselves as «cambas» (inhabitants of the plains) or «kollas» (inhabitants of the highlands), each with very specific characteristics and identity.

Bolivia is a society with a very diverse culture. Its traditions are those of the largest indigenous population in South America. The strategic position of the altiplano with its historic trade routes makes this region the cultural cradle of South America.

Almost 95% of the population is Christian. However, the Christian religion is mixed with many Inca or Aymara beliefs, which are the most represented indigenous groups.

Today, mestizos (individuals of indigenous and Spanish descent) represent the majority of the population, but more than 20% of the population is still indigenous.





Composed of about 11 million inhabitants, the country is divided into three main cities: Sucre, which is the constitutional capital, La Paz, which is the administrative capital, and Santa Cruz, the country's largest city, now the economic centre, thanks in particular to its hydrocarbon exploitation. The country has undergone a period of profound political, economic and social change since the election of the first president of indigenous origin: Evo Morales, who launched many social reforms.

Despite the changes in recent years, more than 5 million people live below the poverty line with a wide disparity between urban and rural areas where

the poverty rate is very high. Faced with this situation, TECHO Bolivia works in the district of La Arboleda de Fatima in the suburbs of Santa Cruz. Their goal is to give as many families as possible a decent housing. After several diagnoses in this neighbourhood, another observation emerged: there is need for a daycare centre to improve the quality of life of families. A daycare centre would allow parents to work without leaving their children alone at home and allow elders to go to school when parents are working. In this context, ARCHsharing, in collaboration with TECHO Bolivia, organizes the competition «Kindergarten Rehabilitation in Bolivia».



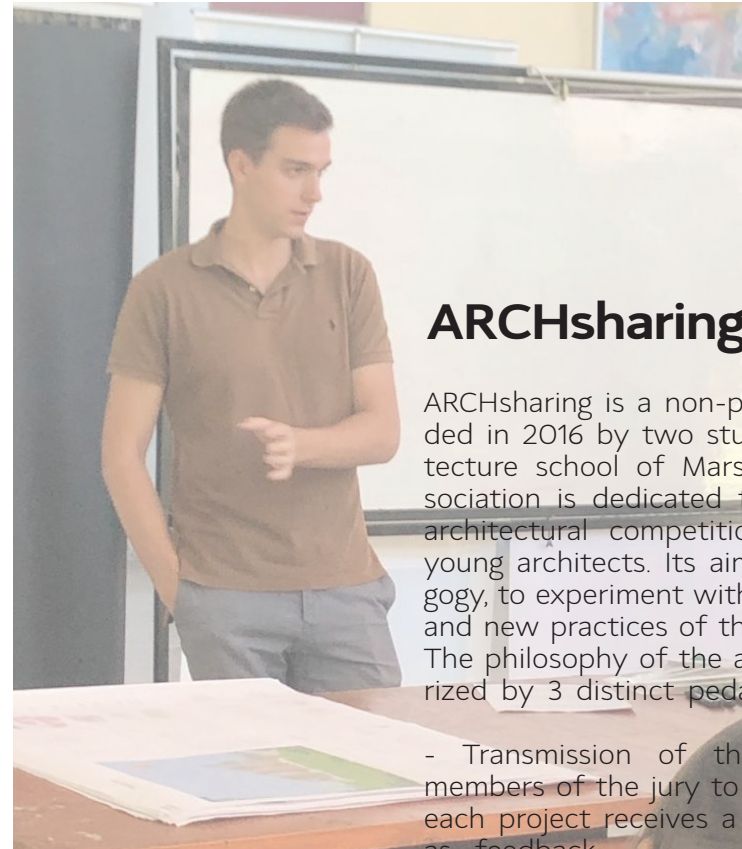


## TECHO BOLIVIA

TECHO is a humanitarian association that seeks to overcome the situation of poverty and precariousness in which thousands of families live in neighbourhoods and communities, through actions between residents and young volunteers. Techo is present in Bolivia since 2010.

This year, our campaign called #PotestaInvisible, shows two families who have decided to make themselves invisible to make visible the problem of poverty that exists in the neighbourhoods of our cities and our lack of action. 44% of the population, 4 out of 10 Bolivians live in a situation of poverty. Faced to this situation, we cannot be indifferent.

In 9 years, since our arrival in Bolivia, we have worked in more than 20 neighborhoods and communities in Santa Cruz and La Paz, building 738 houses. The 800 housing units will be reached in 2019.



## ARCHsharing

ARCHsharing is a non-profit association founded in 2016 by two students from the Architecture school of Marseille (France). The association is dedicated to the organization of architectural competitions for students and young architects. Its aim is to promote pedagogy, to experiment with new ways of learning and new practices of the architectural project. The philosophy of the association is characterized by 3 distinct pedagogical actions:

- Transmission of the comments of the members of the jury to the participants. Thus, each project receives a professional comment as feedback.
- Creation of a book for the dissemination of participants' projects. This book also highlights the important ideas of the participants and allows a deepening of the subject with different articles.
- Access to construction through humanitarian projects. ARCHsharing gives the opportunity to the winners to build their project and to confront to the site.



# COMPETITION

In this context, ARCHsharing proposes, in partnership with the humanitarian association TECHO Bolivia, the construction of a kindergarten in a district on the periphery of the city of Santa Cruz. Located in the district of La Arboleda de Fatima, the project will have to meet many social, constructive and economic challenges while offering the children of the district a playful and quality place. Today, the demand in this neighbourhood represents more than 500 children between the ages of 2 and 5 who do not have access to a kindergarten.

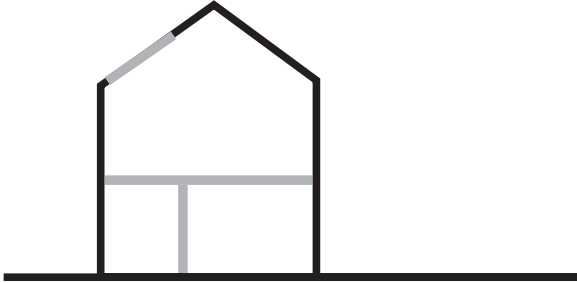
The project site is located within the perimeter of the La Arboleda de Fatima district school. Its strategic location will allow students to accompany their younger siblings to the kindergarten and no longer miss school days for they have to look after them when parents can't.

The site includes two disused buildings that used to form the old school, as well as a large covered sports field that is rarely used today. In order to accommodate as many children as permissible, a rehabilitation of the two existing buildings and a 100m<sup>2</sup> extension will be necessary. A landscaping proposal will complete the project to provide an outdoor courtyard for children.



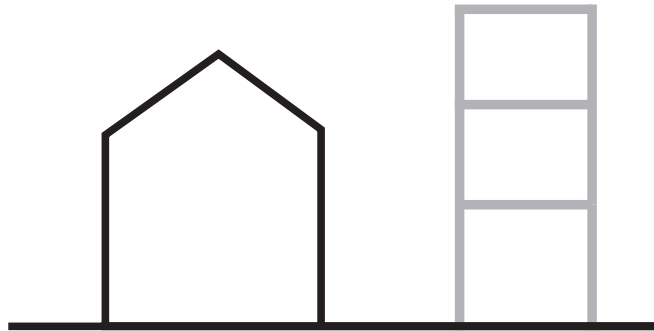


# COMPETITION



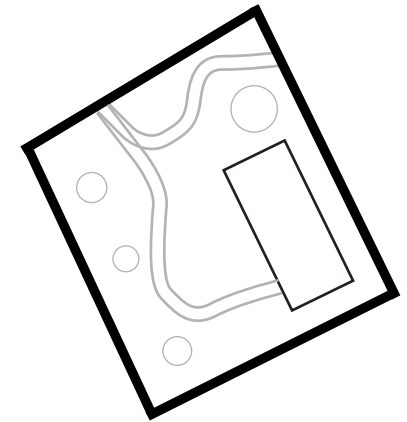
## REHABILITATION

The question of the two existing buildings must be resolved: rehabilitation, renovation, destruction... A rehabilitation project must include a strategy for the rehabilitation of existing buildings. The jury must be able to easily understand the proposed solutions. You are free to choose your strategy, as long as it is affordable and fit Techo's expectations.



## EXTENSION

In order to accommodate as many children as possible, an extension could be proposed. It must be in relation with existing buildings and must not exceed 100m<sup>2</sup>.



## EXTERIOR DESIGN

In order to offer playgrounds and access to the various entities of the project, an outdoor layout will have to be considered. It should make it possible to clarify the uses and offer play areas for children.



# CHALLENGES



## THE BUDGET

The budget allocated to the project is \$10,000. This amount can not be exceeded and is given as an indication to help you. It is not a question of quantifying the project in detail but of finding economic solutions to develop the project.

For information, 70% of the construction budget will be financed by Techo, 30% will be provided by ARCHsharing.

It may be relevant to consider a phasing of the construction to allow the project to be carried out in several phases depending on the available funding.

## A SUSTAINABLE PROJECT

The sustainability of the project must be considered in terms of materiality, energy, bioclimatic aspects and construction techniques. The project must correspond to TECHO Bolivia's philosophy in order to facilitate the construction of the kindergarten.

## SOCIAL STRATEGY

A social strategy should be proposed to provide solutions to the community for the organization and proper management of the nursery. It is a question of thinking about its operation as a whole (management of salaried staff or volunteers, meal financing, organisation of activities, etc.). This social aspect is important so that the inhabitants can easily join this kindergarten project.



# CHALLENGES

## ARCHITECTURAL QUALITY

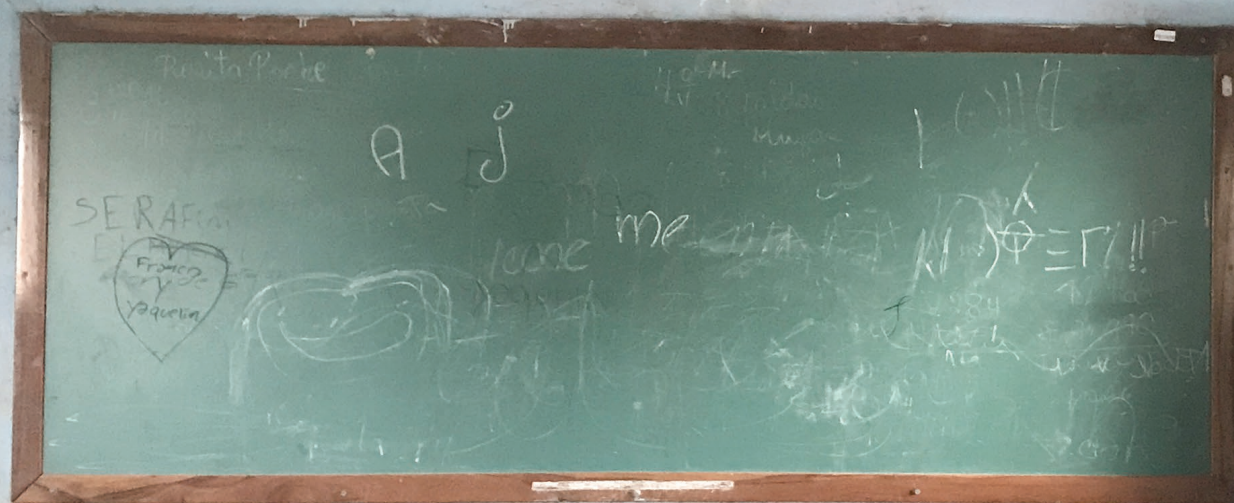
One of the important elements of this competition is to propose innovative solutions while offering a quality building (spatiality, functioning, materiality, organization,...)

## METHODOLOGY

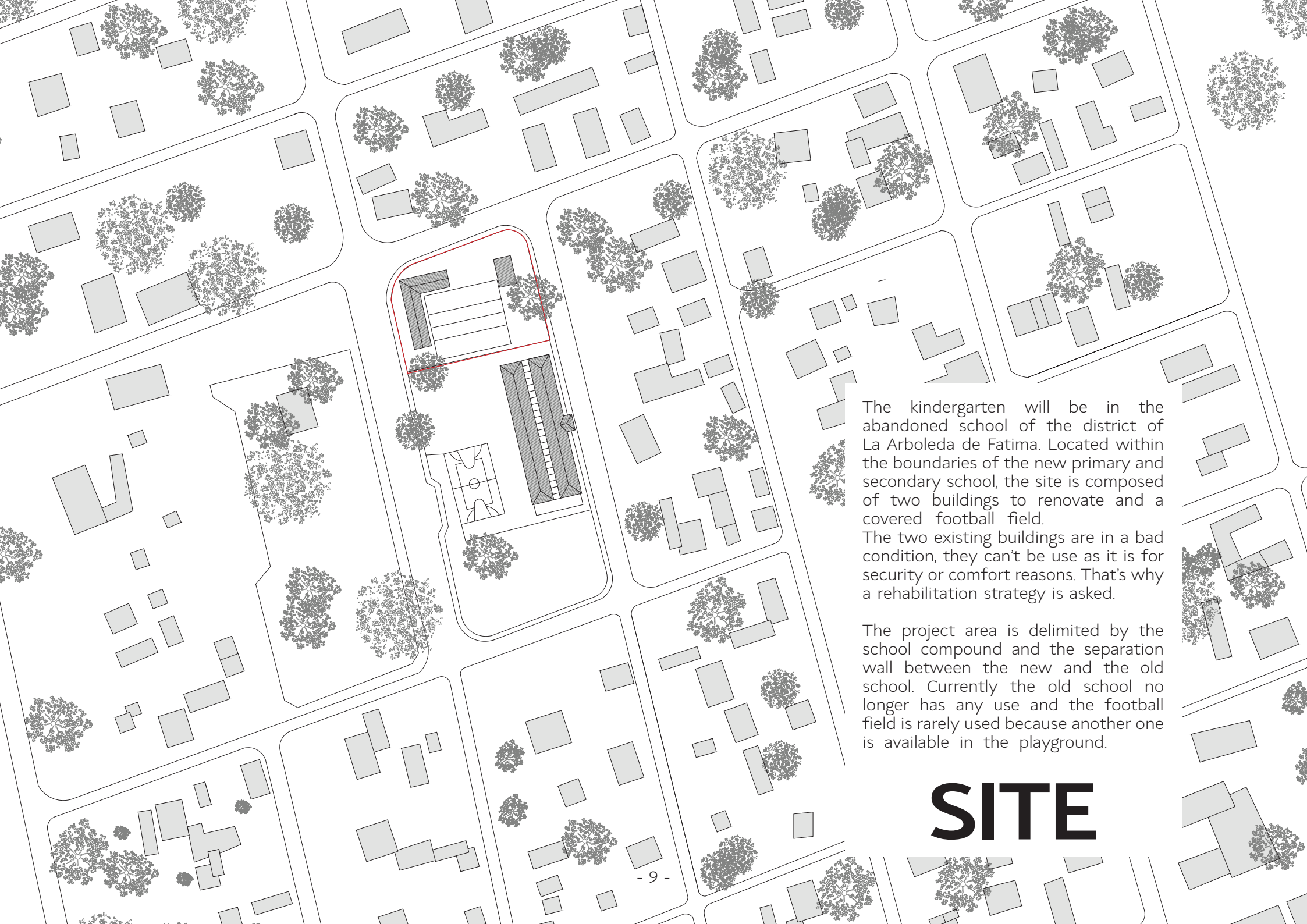
TECHO Bolivia builds all its constructions with the help of volunteers who are not qualified in the field of construction. It is therefore essential to propose a simple constructive methodology that is understandable by all.

## WELCOME CHILDREN

The project will accommodate have to accommodate as many children as possible from the different neighbourhoods surrounding the nursery. Currently there are around 500 children that could benefit from a new Kindergarten. Space will be designed accordingly (safety, furniture sizing, playful aspect, etc.). It is not only a question of offering a roof but also comfortable, practical and playful spaces.







The kindergarten will be in the abandoned school of the district of La Arboleda de Fatima. Located within the boundaries of the new primary and secondary school, the site is composed of two buildings to renovate and a covered football field.

The two existing buildings are in a bad condition, they can't be use as it is for security or comfort reasons. That's why a rehabilitation strategy is asked.

The project area is delimited by the school compound and the separation wall between the new and the old school. Currently the old school no longer has any use and the football field is rarely used because another one is available in the playground.

# SITE



# PROGRAM

The kindergarten project in the neighborhood of La Arboleda de Fatima has several goals:

- Rehabilitation of the existing building
- Creation of an extension about 100m<sup>2</sup>
- Creation of an outdoor design
- Set up of the kindergarten operating system.

The goal is to imagine a building that could welcome as many children as possible. The project shall contain all the spaces a kindergarten needs as explained on the schema. Each space shall be included in the existing building and the extension. You are free to choose the square meters repartition. The program is given for information purposes.

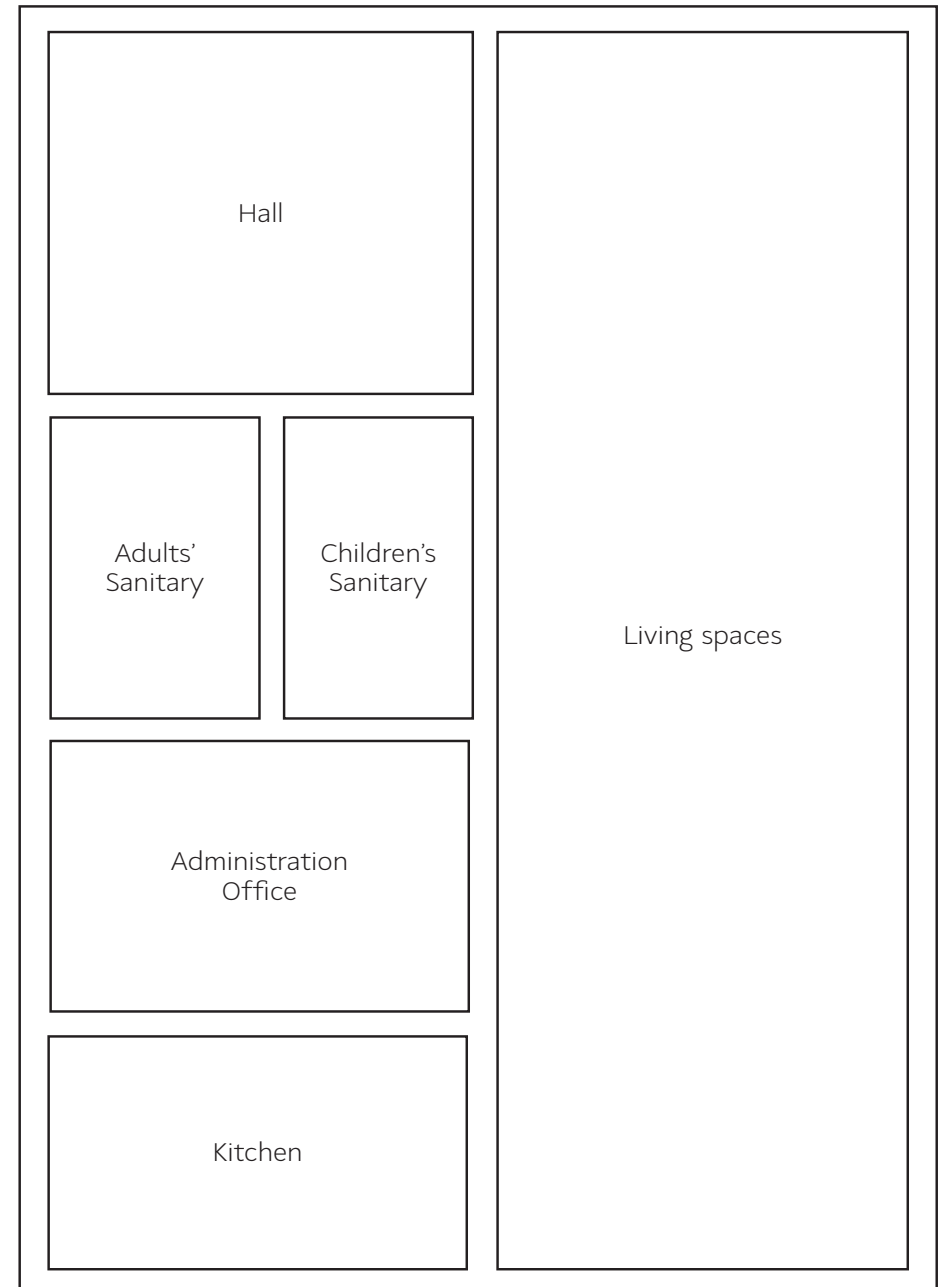
## OUTDOOR SPACES

An outdoor development project is required in order to create recreation areas for the children.

## OPERATION

The particularity of this competition is that the demand is at the initiative of the citizens. There is currently no kindergarten in the neighbourhood and no state agency to manage it either. Management will be given to the principal of the adjacent school and the group of mothers in the neighbourhood. Therefore, in addition to the architectural design of the building, it is welcome to think about its organization.

## KINDERGARTEN





# JURY

On April 10, 2019, a jury of architects will select the 13 winning projects from all proposals. The jury members were selected on the basis of their experience in the field of educational and humanitarian work. A preliminary jury will meet if the number of participants is too high, so that each project receives a thorough feedback. Jury members have given their agreement to participate in the jury on 10, April 2019. However, their participation is subject to their professional constraints, which may lead to changes in the members of the jury.



## AL BORDE

Pascual Gangotena, David Barragán, Marialuisa Borja & Esteban Benavides.  
ECUADOR

Al Borde is a life style... Without any expectation, suddenly it began on May 2007. Its headquarters is at 2800m in Quito-Ecuador. The responsible behind this idea are Pascual Gangotena, David Barragán, Marialuisa Borja and Esteban Benavides. Al Borde faces the practice from its multiple complexities and finds the gaps in the system to operate. They mix it up without any embarrassment, resilient by nature and reluctant to the dogmas. Their way of thinking has been developed on daily basis with hands on work. They are quite far off from theory and highly attached to the local reality. Their projects are always seeking to enhance local development and have a high component of social innovation.



## CC ARQUITECTOS

Manuel Cervantes.  
MEXICO

In our practice we do not disregard architecture's potential, since this is what allows us to connect people with their surroundings, create atmospheres and aspire to improve quality of life. We see the void within the constructed project as the possibility of weaving a fine web around the natural environment : Natural light shade, ventilation and the intentional incorporation of vegetation and the surrounding landscape.







## EL EQUIPO MAZZANTI

Eugenia Concha  
COLOMBIA

Eugenia Concha is the project manager of the team Mazzanti since 2013. Social values are at the heart of the Mazzanti team's architecture, which focuses on projects that strengthen community development by improving the quality of the environment and developing a concept of social equality. The Mazzanti team's projects reflect the major changes taking place in Latin America and contribute to demonstrating how good architecture can lead to new identities for cities and their inhabitants.



## COMUNAL: TALLER DE ARQUITECTURA

MEXICO

Aware of the reality that exists in rural indigenous communities and self-built urban settlements in Mexico, where basic and constitutional human rights such as housing, health and education are almost always absent, we question and rethink the role of the architect not only as a professional capable of shaping space to give refuge, but as an entity with the capacity to respond to the needs of communities through social, political and economic management. We conceive our work and commitment in an integral and systemic way, addressing all the legal, political, social, economic and environmental aspects necessary for the consolidation of a community project.





# PRIZES

1<sup>st</sup>

**CONSTRUCTION**

**1500 €**

Publication ARCHsharing  
2 volumes des ARCHsharing Book

2<sup>nd</sup>

**1000 €**

Publication ARCHsharing  
2 volumes ARCHsharing Book

3<sup>rd</sup>

**500 €**

Publication ARCHsharing  
2 volumes Archsharing Book

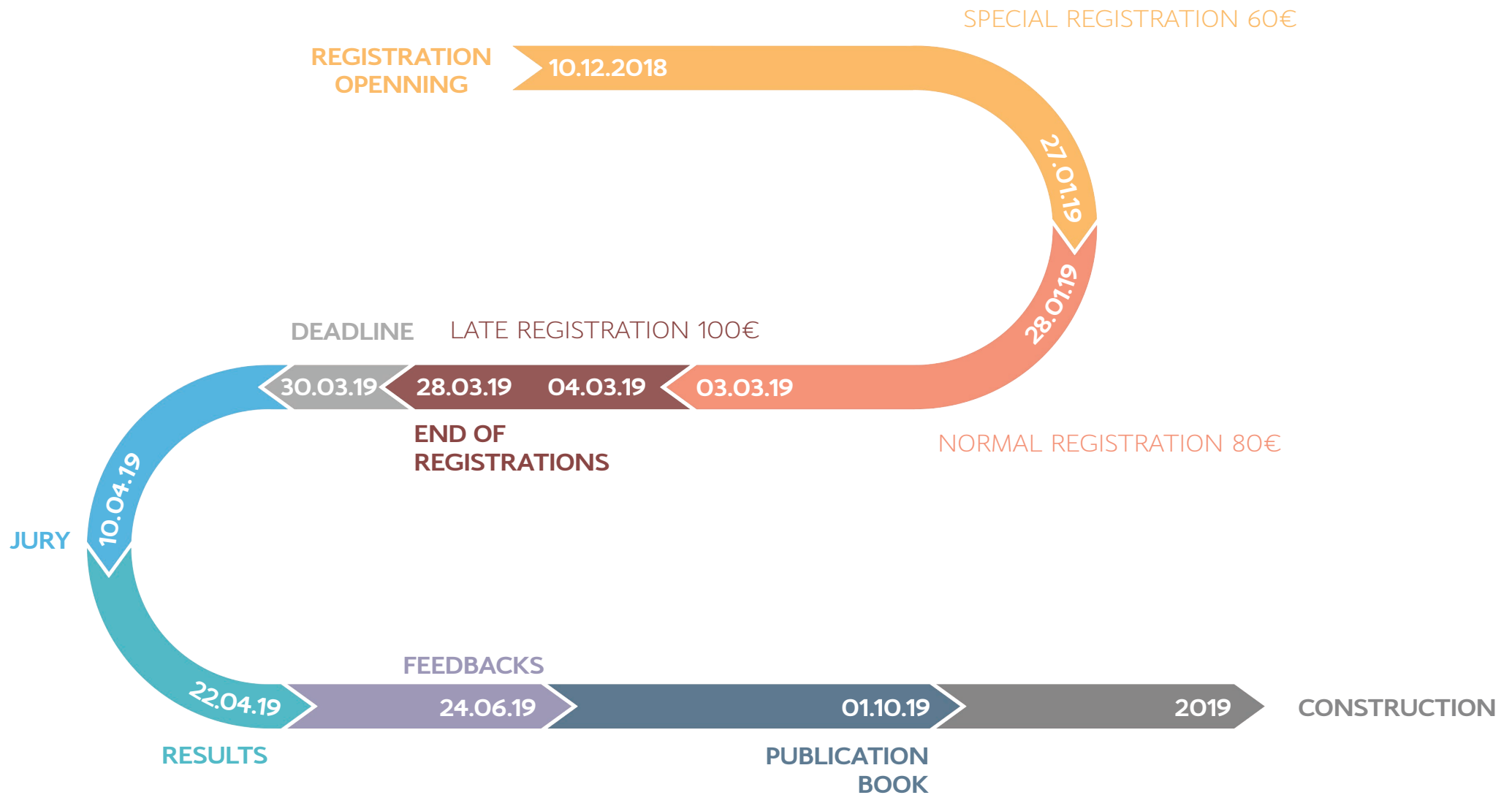
10

**HONORABLE MENTIONS**

Digital magazines Archpapers + publication ARCHsharing: LWT or CCN



# CALENDAR





# RULES

## REGISTRATIONS

---

60€

SPECIAL REGISTRATION

from 10 december 2018 to  
27 january 2019

80€

NORMAL REGISTRATION

from 28 january 2019 to  
03 march 2019

100€

LATE REGISTRATION

from 04 march 2019 to  
28 march 2019

## ELEGIBILITY

---

Registration is open to all students of schools and universities in relation with architecture, and to young architects less than three years after graduation. Teams can be multidisciplinary (architect, engineer, landscaper,...). An official proof will be asked during registration (student card, diploma,...).

## CONSTRUCTION

---

ARCHsharing gives the opportunity to the winning project to be built with the humanitarian association TECHO Bolivia. The contract stipulates that TECHO commits to carry out the construction of winning project. ARCHsharing acts on the basis of good will and determination to see the project built but in no case can be held responsible if the construction can not be completed.

The laureate will be encouraged to go to Bolivia to participate in the preliminary studies of the project and to get involved in the construction of his project. the rights of the project will be given to TECHO, which is required to mention the name of the winner on every document related to the project. The entry in the competition implies that the participant in the event that he is awarded the rights of his project to TECHO.

## FEEDBACKS

---

ARCHsharing is committed to sending each participant the comments from the jury members. After the competition, a book will be published with different articles on the topic of the competition and the most innovative projects received.

This publication aims at sharing and spreading the ideas of students worldwide. An inspiration on a specific theme for architects of today and tomorrow.

## DOCUMENTS

---

Participants will submit two types of documents.

One panel, A1 size, (landscape or portrait), and one explanatory notice on 200 words, A4 size.

The A1 panel shall contain all graphical elements needed for a proper understanding of the project. Any kind of representation is accepted (plan, section, 3D, axonometry, models, ...).

Files must be JPG format and no bigger than 10 Mo. File names will follow this template: TEAMCODE\_ A1\_KRB (example: ACS\_A1\_KRB).

Explanatory notice will be clear and concise, no longer than 200 words. Font shall be Arial 12. Notice name shall follow this template: TEAMCODE\_ A4\_ KRB (example: ACS\_A4\_KRB).

IMPORTANT:

Layout must follow the template given during the registration.

Documents shall be submitted in english on ARCHsharing website : [www.arch-sharing.com](http://www.arch-sharing.com)

Submission deadline is 03 November 2018 at 23:59 (UTC/GTM+2, Paris)

## INTELLECTUAL PROPERTY

---

Registering to the KRB competition implies transferring an unlimited right of use, distribution, publication and communication of all submitted material to ARCHsharing. Should any material be further used, distributed, published or communicated by ARCHsharing, the authors' names shall be mentioned.