

AOS Neptune

AOS Neptune is a vessel designed and built as twin (Azimuth Thrusters Propellers), three bow thrusters and two station controls in wheelhouse. The vessel is suitable to be used as offshore supply and fire fighting Class 1 vessel.

This Platform Supply Vessel is for operation in unrestricted waters and is designed for multi-purpose roles as follows:

- a. Transport fresh water, diesel oil, bulk cement, liquid mud, base oil and brine stores, materials and equipment.
- b. External fire fighting
- c. Move men and materials between platforms
- d. Rescue men fallen overboard
- e. Operation to be 24 hours/day continuous operations, capable of remaining on station for about 28 days.



Atlantic Maritime Group FZE

AOS Neptune

PRINCIPAL PARTICULARS

Length Overall:	75.00 m
Length Waterline:	72.52 m
Breadth Moulded:	17.25 m
Depth Moulded:	8.00 m
Draft (designed):	6.60 m
Year Built:	2015
GRT/NRT:	2948 / 884
Class:	ABS
Flag:	TBN
Call Sign:	TBN

CARGO CAPACITIES:

Deadweight:	3300 T @ max draft
Deck Cargo:	1200 T
Deck Strength:	5.5 T/m ²
Clear Deck Area:	700 m ²
Fuel Oil:	775 m ³
Fresh Water:	550 m ³
Drill Water / SWB:	1520 m ³
Mud/Brine/Rec Oil:	740 m ³
Bulk Cement:	226 m ³
Freezer:	-18 deg. Celsius suitable for 58 men onboard for a period of 28 days
Cooler:	+4 deg Celsius suitable for 58 men onboard for a period of 28 days
Foam:	12 m ³
Detergentt:	12 m ³
Lube Oil:	18 m ³

ACCOMMODATION

Configuration:	Crew:	2 x 1 man cabin 2 x 2 men cabins 3 x 4 men cabins
	Passenger:	6 x 1 man cabin 18 x 2 men cabins
Total:		60 men
Hospital:		1 x 1 men
Wet Modules:		

PERFORMANCE

Maximum Speed:	12.5 knots
----------------	------------

DISCHARGE RATES

Fuel Oil:	2 x 150 m ³ /hr @ 80 m head
Portable Water:	1 x 150 m ³ /hr @80 m head
Drill Water:	150 m ³ /hr @ 80 m head
Liquid Mud:	2 x 75 m ³ /hr @ 80 m head
Cement Compressor:	2 x air compressor 415/3/50 of 20 m ³ /min each @ 80 psi
Base Oil:	1 x 35 m ³ /hr @ 8 bar

PROPULSION SYSTEM

Main Engines:	2 x Yanmar @ 3,000 bhp
Shaft Generator:	2 x 1200kw; 425V/3Ph/50Hz
Diesel Generator:	3 x 415V/50Hz/450Kw
Emergency Generator:	1 x 130 kW; diesel driven
Bow Thruster:	2 x 10 T electric driven; 600kw; 1 x 8T; 500kw
Rudders Propeller:	CPP; Azimuth Controllable Pitch

DECK EQUIPMENT

Windlass:	12m/min for 50 mm dia.
Anchors:	2 x 1980 kg high holding anchors
Chains:	2 x 385 m x 50 mm dia.
Capstan:	2 x 10T @ 15 m/min
Tugger Winch:	2 x Electry Hydraulic; 10 T @ 15 m/min c/w 250 m x 25 mm dia. wire
Deck Crane:	1 x Pedestal mounted Telsopic Marine Crane SWL: 20 T@ 10 m



Atlantic Maritime Group FZE

AOS Neptune

DYNAMIC POSITIONING SYSTEM

DP 2 System:	Dynamic Positioning 2
	DP-2 w/ Joystick KONGSBERG
	- 2 X RADIUS 1000
	- 1 X HIPAP
	- TAUT WIRE CAPABLE
	- 2 x DGPS
	- 1 x joystick
	- 2 x DP control computers
	- 2 x UPS
	- 3 x wind sensor
	- 3 x gyro compass
	- 2 x printer for alarm data log

RADIO AND NAVIGATION EQUIPMENT

GMDSS:	Area A3 (INMARSAT)
VHF:	two sets
MF/HF DSC:	one set
Inmarsat C:	one set
Radar:	one unit
Echo Sounder:	one unit
Gyro Compass:	one unit
SART:	two sets
VHF radios:	three sets
EPIRB:	one set
Magnetic Compass:	one unit
Speed Log:	one set
Naxtex Receiver:	one set
GPS Navigator:	one set
Weather Fax:	one unit
Anemometer:	one set

GALLEY AND LAUNDRY EQUIPMENT

Electric Cooking Range:	6 x hot plates, 1 oven
Refrigerator Capacity:	500 liters
Freezer Capacity:	290 liters
Electric Water Boiler:	10 liters
Washing Machine:	1 x automatic 6 kg
Dryer:	2 x w/ exhaust fan
Iron:	2 x iron
	2 x ironing boards

FIRE FIGHTING AND ANTI-POLLUTION

EXTERNAL:

FIFI Class 1	
Fire Pump:	2 x 1500 m ³ /hr @ 10 MLC
Water / Foam:	2 x 1200 m ³ /hr @ 12 bar
Search Lights:	3 x 2000W

INTERNAL:

Emer Fire Pump:	35 m ³ /hr @ 50 m
1 x Co ₂ System:	in Main Engine Room

LIFE SAVING AND HSE EQUIPMENT

Search Lights:	3 x 2000 W
Floodlights:	5 x 1000 W
Liferafts:	6 x 25 men
Lifejackets:	as per SOLAS
Lifebuoys:	8 sets
Scrambling Nets:	2 x 2 m x 6 m
Rescue Boats:	1 x 6 men

MISCELLANEOUS

Sewage Treatment Pl:	one set
Oily Water Separator:	one set

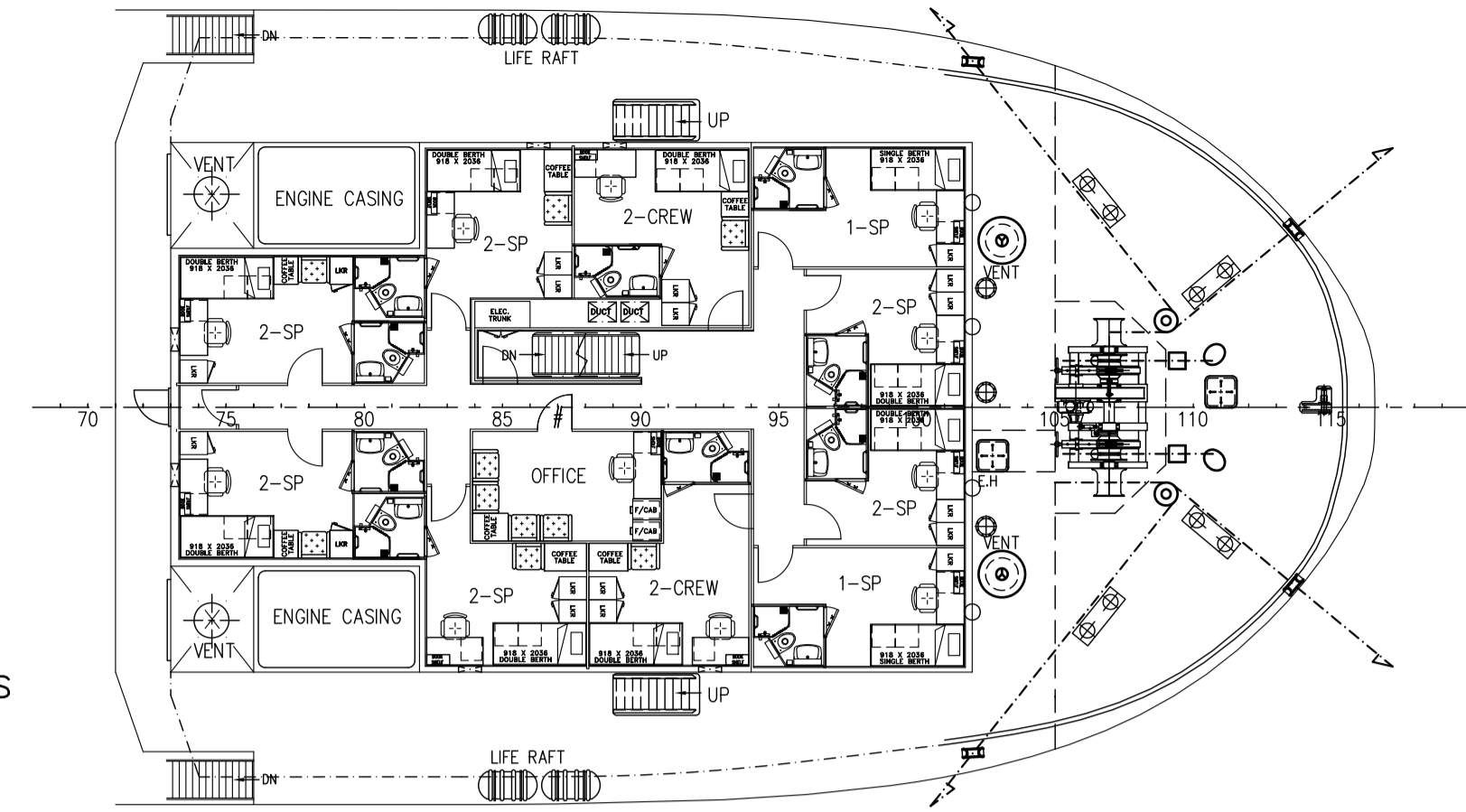
KC-33H PSV

PRINCIPAL DIMENSIONS

LENGTH (O.A.)	75.00 M
LENGTH (W.L.)	72.52 M
LENGTH (B.P.)	67.47 M
BEAM (MLD.)	17.25 M
DEPTH (MLD.)	8.00 M
MAX. DRAFT (MLD.)	6.60 M
TOTAL DWT	3233 TONS
FUEL OIL	720 M ³
FRESH WATER	550 M ³
MUD/ BRINE /R.O.	740 M ³
BASE OIL	130 M ³
CLEAR DECK AREA	700 M ²
DECK CARGO (DECK LOADING = 5.5T/M ²)	1200 TONS
DRY BULK TANKS (4x2000 FT ³ =8000 FT ³)	226 M ³
MAIN PROPULSION	2 X 3000 PS
SPEED (TRIALS)	13.0 KNOTS
COMPLEMENT	41 MEN
CREW	17 MEN
SPECIAL PERSONEL	24 MEN

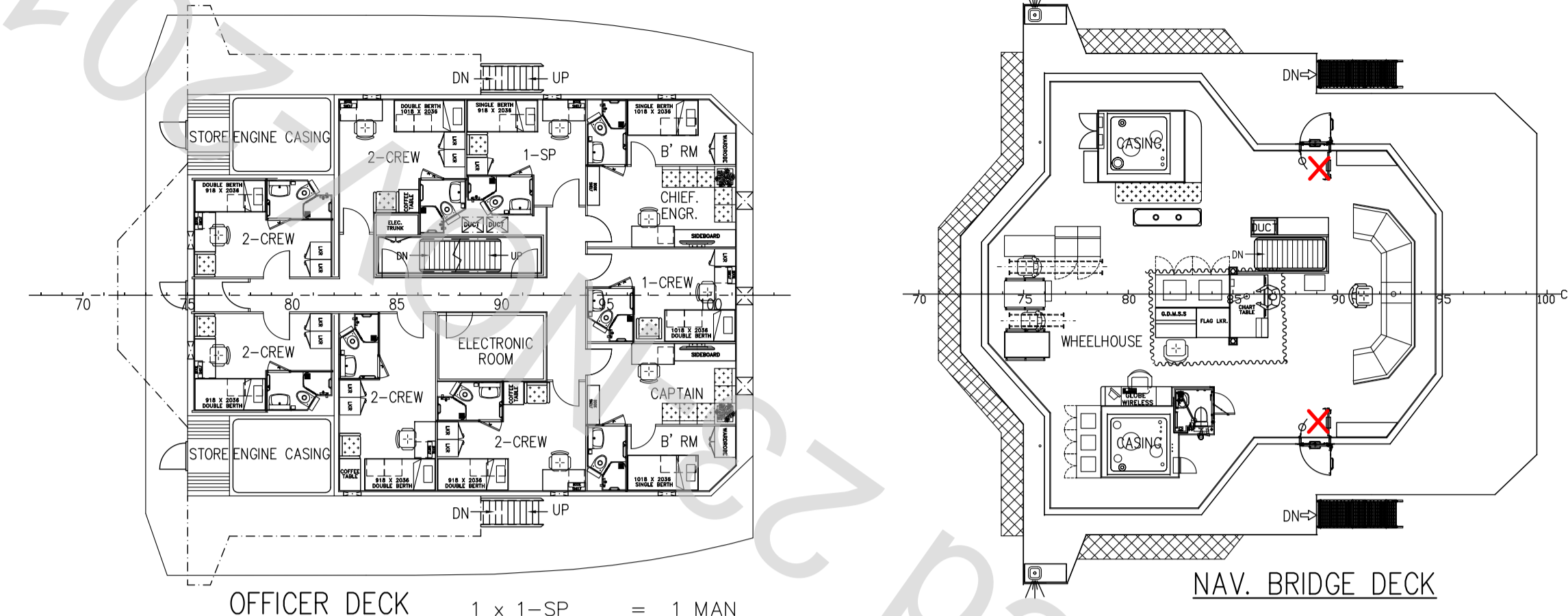
CLASS & NOTATION :

ABS * A1 (E) OFFSHORE SUPPORT VESSEL(SUPPLY, FFV1, OSR-C2), SPS, *AMS, ACCU, DPS-2, RW



UPPER FORECASTLE DECK PLAN

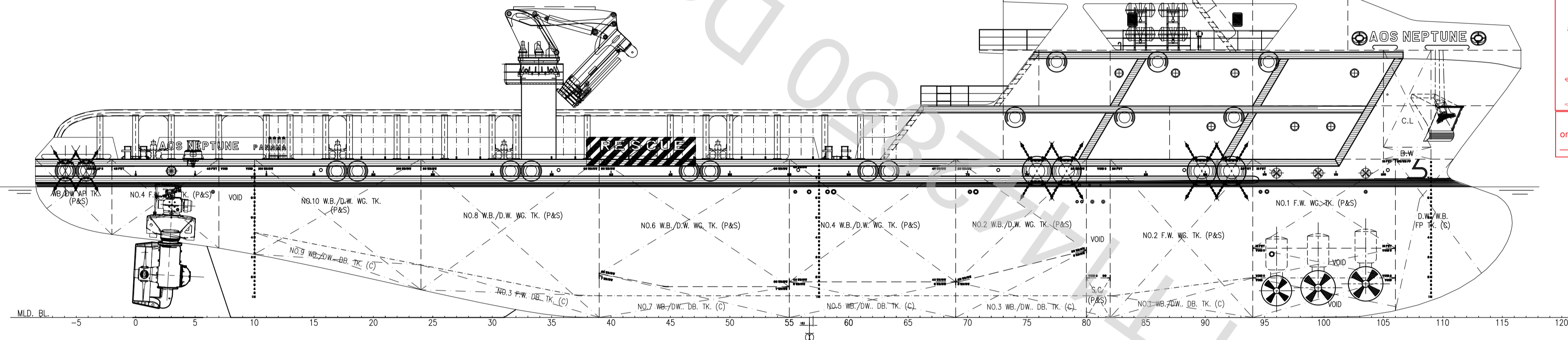
2 x 2-CREW	= 4 MEN
6 x 2-SP	= 12 MEN
2 x 1-SP	= 2 MEN
TOTAL	= 18 MEN



OFFICER DECK

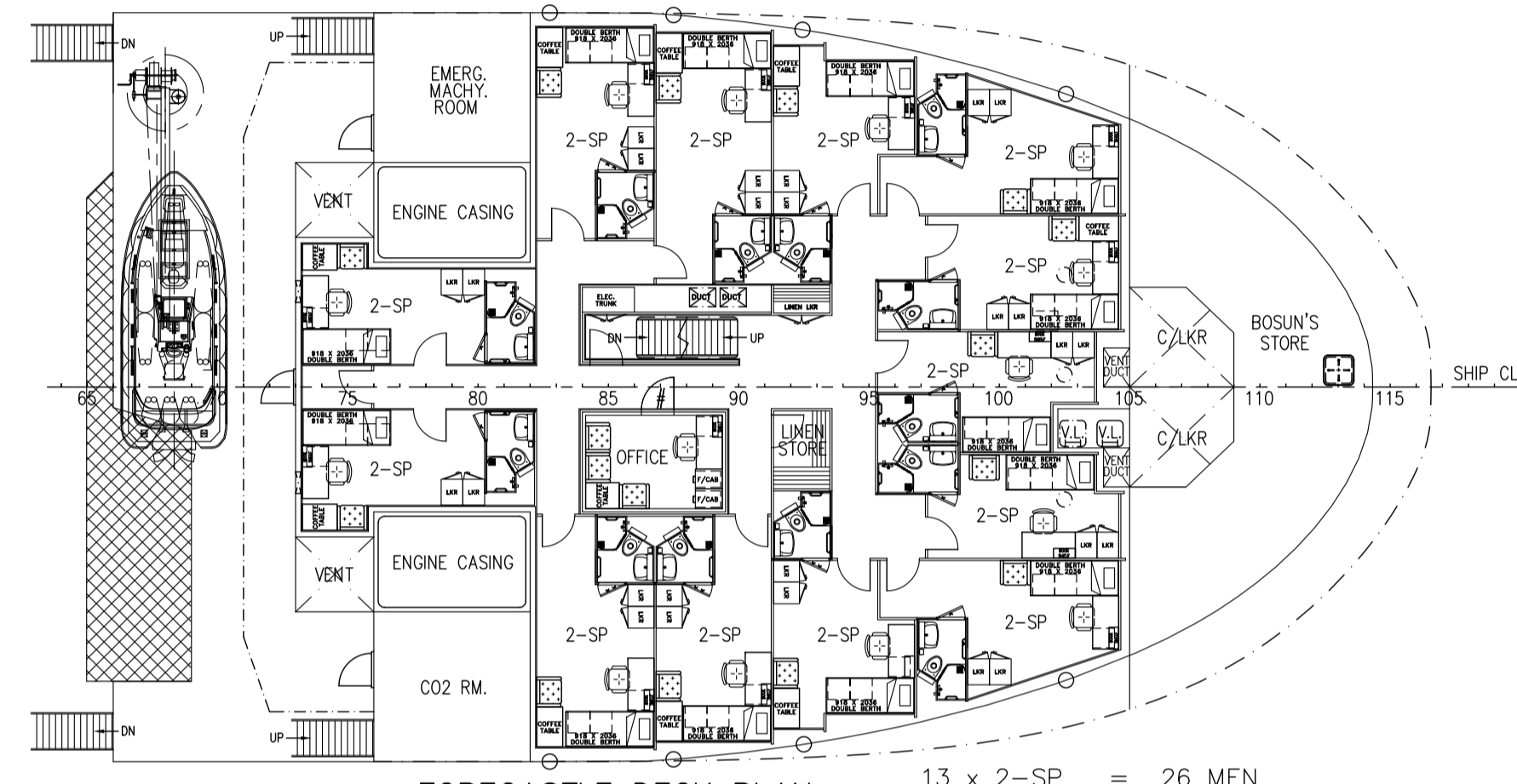
1 x 1-SP	= 1 MAN
3 x 1-CREW	= 3 MEN
5 x 2-CREW	= 10 MEN
TOTAL	= 14 MEN

NAV. BRIDGE DECK



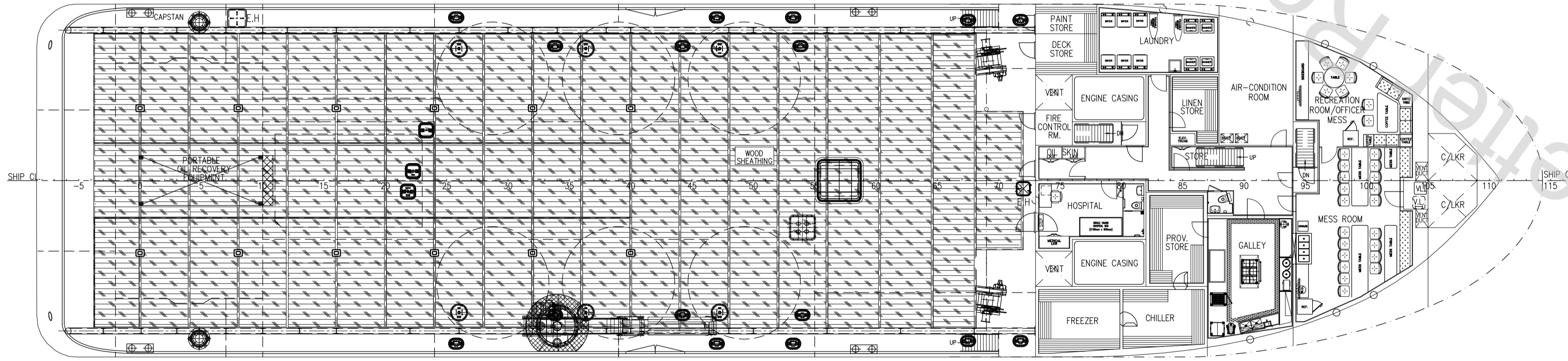
OUTBOARD PROFILE

REVIEWED
Details of this review are as indicated in the ABS letter
ABS
AS AMENDED on pages P 1/1

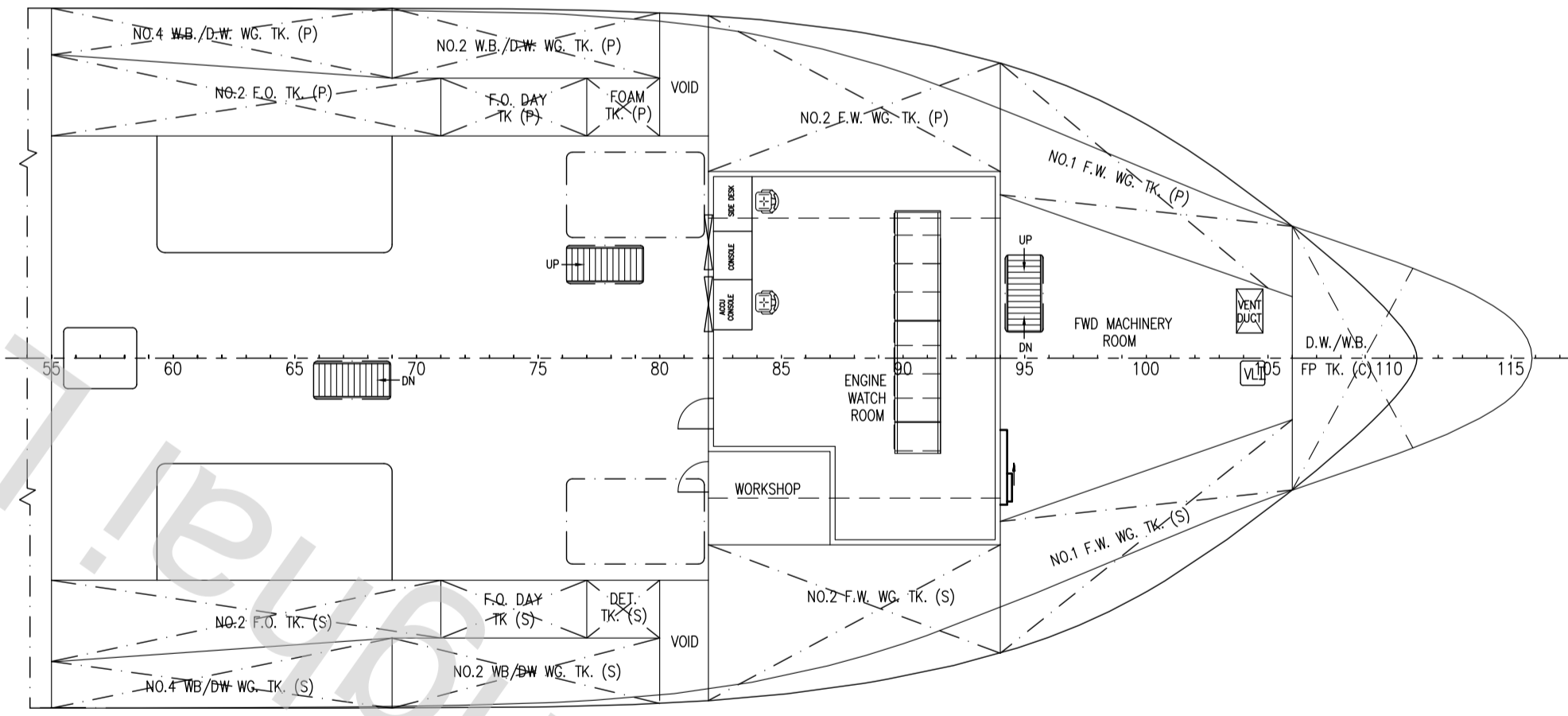


FORECASTLE DECK PLAN

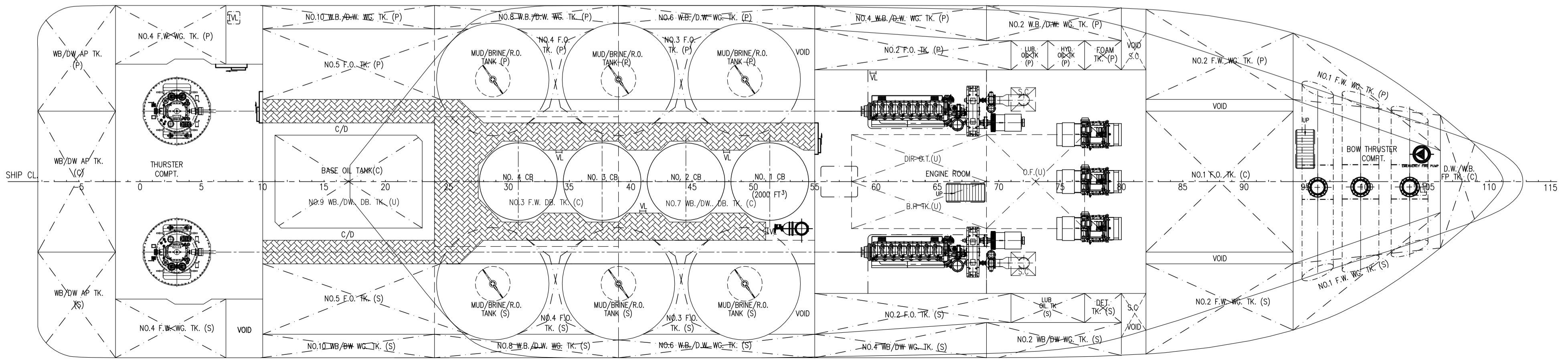
13 x 2-SP	= 26 MEN
TOTAL	= 26 MEN



MAIN DECK PLAN



TWEEN DECK PLAN



BELOW DECK PLAN

NOTE:-

- PLEASE NOTE MUD/BRINE/R.O. TANK SHALL CARRY RECOVERY OIL & POLLUTION HAZARD ONLY SUBSTANCES LISTED IN IMO A.673/HAVING A FLASHING POINT EXCEEDING 60°C.
- # APPROPRIATE ARRANGEMENTS TO AVOID INJURY TO PERSONS IN THE CORRIDOR SHALL BE CONSIDERED.
- A TOE BOARD OR KICK PLATE BE INSTALLED ON THE BRIDGE WING DECK BELOW THE LOWER RAIL COURSE.
- DECK AREA FOR HANDLING OIL AND OIL-BASED LIQUID TO BE PROVIDED WITH A COATING OF AT LEAST 150MM HEIGHT AROUND ALL PUMPS, TRANSFER FLANGE, CONNECTIONS AND OTHER EQUIPMENT WHERE LEAKAGE MAY OCCUR. COATING FOR RECOVERY OIL MAY BE OF REMOVABLE TYPE.
- BALLAST WATER TANKS/DRILLING WATER TANKS ARE NOT DEDICATED SEAWATER BALLAST TANKS.

OTHER COMMENTS SEE ABS LETTER.

2	FO DAY TANK, ACCOMMODATION LAYOUT AMENDED	YUMINGYE	23.10.15
1	LBP UPDATED	YUMINGYE	23.1.14
REV.	DETAILS OF MODIFICATION	BY	DATE
CONSULTANT	KC KHIAM CHUAN MARINE PTE LTD 31, BUKIT BATOK CRESCENT, #01-53, THE SPLENDOUR SINGAPORE 658070 Tel+65-67753383 Fax+65-67753788 Email: khamchuan@kcm.com.sg		
PROJECT	Guangxin Shipbuilding & Heavy Industry Co.,Ltd. 75m PLATFORM SUPPLY VESSEL		
TITLE	GENERAL ARRANGEMENT		
CLASSIFICATION	HULL NO. GS13185		
DRAWN	CHECKED	SCALE	DRAWING NUMBER
hckOH		1:150	KCM/Q663(E)-G1
30-09-12			2

THIS DOCUMENT AND THE INFORMATION IT CONTAINS IS COPYRIGHT AND REMAINS THE PROPERTY OF KHIAM CHUAN MARINE PTE LTD. IT IS NOT TO BE COPIED IN WHOLE OR IN PART OR DISCLOSED TO ANY THIRD PARTY FOR ANY PURPOSE WHATSOEVER WITHOUT PRIOR WRITTEN CONSENT.