

# AOS Triumph



**AOS Triumph** is a vessel equipped with two (2) Controllable Pitch Propellers and one (1) bow thruster. It is built of steel and engine room is located in the middle.

This Vessel is designed to obtain the following roles:

- a. Towing and anchor handling duties
- b. Transport liquid cargo, bulk cement, liquid mud, stores, materials and equipment
- c. External fire fighting
- d. Move men and materials between platforms
- e. Safety and rescue operations
- f. Operation to be 24 hours/day continuous operation, capable of remaining on station for a minimum of 14 days



Atlantic Maritime Group FZE

# AOS Triumph

## PRINCIPAL PARTICULARS

Length Overall:	58.70 m
Length Waterline:	56.31 m
Breadth Moulded:	14.60 m
Depth Moulded:	5.50 m
Design Draft (Moulded):	4.75 m
Year Built:	2014
GRT/NRT:	1561 / 468
Class:	Bureau Veritas
Flag:	Panama
Call Sign:	HP4826

## CARGO CAPACITIES:

Deadweight:	1500 T
Deck Cargo:	500 T
Deck Strength:	7 T/m <sup>2</sup>
Clear Deck Area:	370 m <sup>2</sup>
Fuel Oil:	475 m <sup>3</sup>
Fresh Water:	212.2 m <sup>3</sup>
Drill Water / SWB:	417.2 m <sup>3</sup>
Mud Tank:	259.2 m <sup>3</sup>
Cement Tanks:	4 x 46.72 m <sup>3</sup>
Freezer:	9 m <sup>3</sup>
Cooler:	6 m <sup>3</sup>
Foam:	13.5 m <sup>3</sup>
Dispersant:	13 m <sup>3</sup>
Lube Oil:	6 m <sup>3</sup>

## DECK EQUIPMENT

Windlass:	9T @ 12m/min for 40 mm dia.
Anchors:	2 x 1305 kg
Chains:	2 x 400 m x 40 mm dia.
Capstan:	2 x 5T @ 15 m/min
Tugger Winch:	2 x 10T @ 15 m/min
Rope Reel:	1 x 5T @ 15 m/min
	Cap: 1000 m (L) x 56 mm dia.
Deck Crane:	1 x Pedestal Mounted SWL: 3T @ 2.5 m - 9 m

## PERFORMANCE

Maximum Speed:	13.5 knots
Economical Speed:	12 knots
Fuel:	840 liters

## DISCHARGE RATES

Fuel Oil:	150 m <sup>3</sup> /hr @ 75 m head
Portable Water:	100 m <sup>3</sup> /hr @ 75 m head
Drill Water:	100 m <sup>3</sup> /hr @ 75 m head
Liquid Mud:	2 x 70 m <sup>3</sup> /hr @ 75 m head
Bulk Mud / Cement:	2 x 13.0 m <sup>3</sup> /min

## PROPULSION SYSTEM

Main Engines:	2 x Caterpillar 3516B 2575 bhp / 1920 kW @ 1600 rpm
Reduction Gears:	2 x Reintjes LAF 873 ratio 7:455:1
Shaft Generator:	2 x 1192 PTO Driven
Main Generator:	2 x Caterpillar C18 350 kW Diesel Driven
Bow Thruster:	2 x Kawasaki 8T CPP Type
Propellers:	2 x controllable pitch propeller
Rudders:	2 x double plate flat type
Steering Gear:	2 x independent electro-hydraulic

## TOWING / ANCHOR HANDLING EQUIPMENT

Bollard Pull:	69.40 T (approx)
Winch:	2 x 10T @ 15 m/min
Stern Roller:	200T; 5.0 m x 1.6 m dia.
Shark Jaw & Tow Pins:	2 x 5T @ 15 m/min hydraulic operated type SWL: 200T

## ACCOMMODATION

Configuration:	2 x 1 man cabins 4 x 2 men cabins <u>8 x 4 men cabins</u>
Total:	42 men
Hospital:	1 x 1 men
Accommodation is fully air conditioned	



Atlantic Maritime Group FZE

# AOS Triumph

## DYNAMIC POSITIONING SYSTEM

DP1 System: Kongsberg DP 1  
This vessel is expected to hold position under the following environmental conditions:  
Current: 2 knots  
Significant Wave Height: 2.5m  
Wind Speed: 35 knots  
Wave Period: 10 sec  
Basic Hardware:  
2 x Position Reference System  
2 x Wind Sensor  
1 x Vertical Reference Systems  
2 x Gyro Compass  
1 x Uninterruptible Power Supply (UPS)  
1 x Control Station with one Computer System  
Operational Mode:  
Standby Mode  
Manual/Joystick Mode  
Mixed Manual & Auto Mode  
Auto Heading Mode  
Auto Position Mode  
Auto Track Mode

## RADIO AND NAVIGATION EQUIPMENT

GMDSS: Area A1+A2+A3  
SSB: 1 x Furuno FS-1570  
VHF: 2 x Furuno FM8800S  
MF/HF DSC: 1 x Furuno FS-1570  
Inmarsat C: 2 x Furuno Felcom-15  
Radar: 1 x Furuno FR-2115  
Echo Sounder: 1 x Furuno FE-700  
Gyro Compass: 1 x Robertson RGC-11  
SART: 2 x Mc Murdo S4  
VHF radios: 3 x Mc Murdo R2 (portable)  
EPIRB: 1 x Mc Murdo E5  
Magnetic Compass: 1 x Saura MR-150  
Speed Log: 1 x Furuno DS-80  
Naxtex Receiver: 1 x Furuno NX-700B  
GPS Navigator: 2 x Furuno GP-150  
Weather Fax: 1 x Furuno FAX-408

## LIFE SAVING AND HSE EQUIPMENT

Search Lights: 3 x 2000 W  
Floodlights: 7 x 1000 W  
Liferafts: 4 x 20 men & 2 x 25 men  
Lifejackets: 53 sets  
Lifebuoys: 8 sets  
Scrambling Nets: 1 x 4.6 m x 1.1 m  
Rescue Boats: 1 x 6 men

## FIRE FIGHTING AND ANTI-POLLUTION

### EXTERNAL:

FIFI Class 1 c/w Water Spray  
Fire Pump: 2 x 1500 m<sup>3</sup>/hr @ 130 MLC  
Water / Foam: 2 x 1200 m<sup>3</sup>/hr @ 12 bar  
Search Lights: 3 x 2000W  
Dispersant S/B: 13 m<sup>3</sup>

### INTERNAL:

Emer Fire Pump: 55 m<sup>3</sup>/hr @ 4.5 bar  
1 x Co<sub>2</sub> System: in Main Engine Room

## GALLEY AND LAUNDRY EQUIPMENT

Electric Cooking Range: 6 x hot plates, 1 oven  
Refrigerator Capacity: 290 liters  
Freezer Capacity: 250 liters  
Electric Water Boiler: 10 liters  
Washing Machine: 2 x automatic 8 kg  
Dryer: 2 x w/ exhaust fan  
Iron: 2 x iron  
2 x ironing boards

## MISCELLANEOUS

Sewage Treatment Pl: one set  
Oily Water Separator: one set

**PRINCIPAL DIMENSIONS**

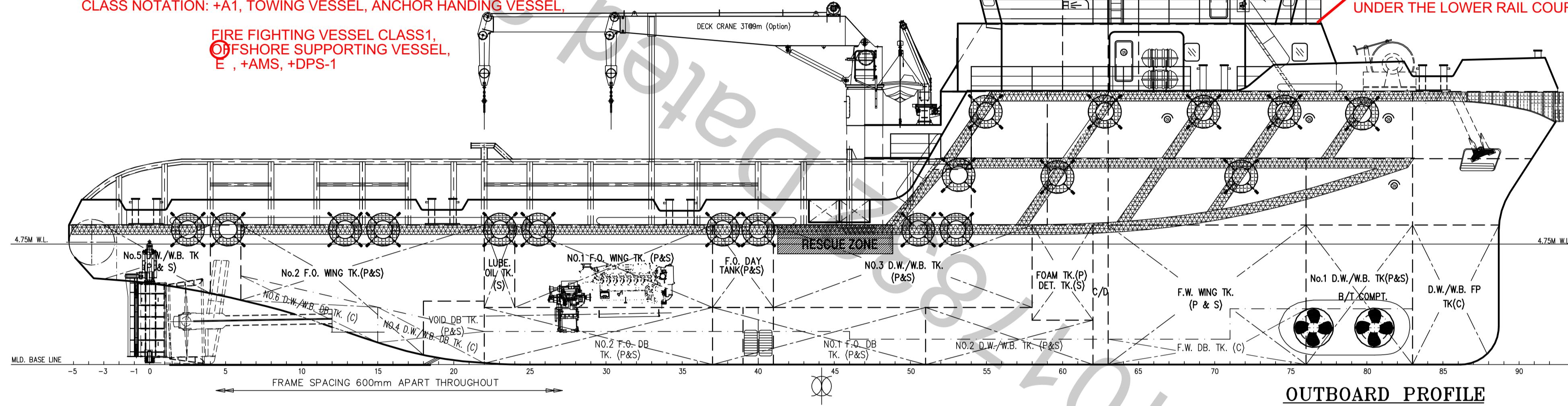
LENGTH OVERALL	58.70 M
LENGTH WATERLINE	56.31 M
LENGTH BETWEEN PERPENDICULARS	53.20 M
BREADTH MOULDED	14.60 M
DEPTH MOULDED	5.50 M
DESIGN DRAFT MOULDED	4.75 M
ACCOMMODATION	42 MEN
FUEL OIL	475 M <sup>3</sup>
FRESH WATER	230 M <sup>3</sup>
DRILL WATER	460 M <sup>3</sup>
MUD (S.G. - 2.5)	250 M <sup>3</sup>
DRY BULK TANKS(4 x 1650 FT <sup>3</sup> = 6600 FT <sup>3</sup> )	187 M <sup>3</sup>
CLEAR DECK AREA (DECK LOADING = 7 T/M <sup>2</sup> )	370 M <sup>2</sup>
TOTAL POWER	2 x 2575 BHP
BOLLARD PULL	ABT 65 TONNS
SPEED	13.5 KNOTS

CLASS NOTATION: +A1, TOWING VESSEL, ANCHOR HANDING VESSEL,

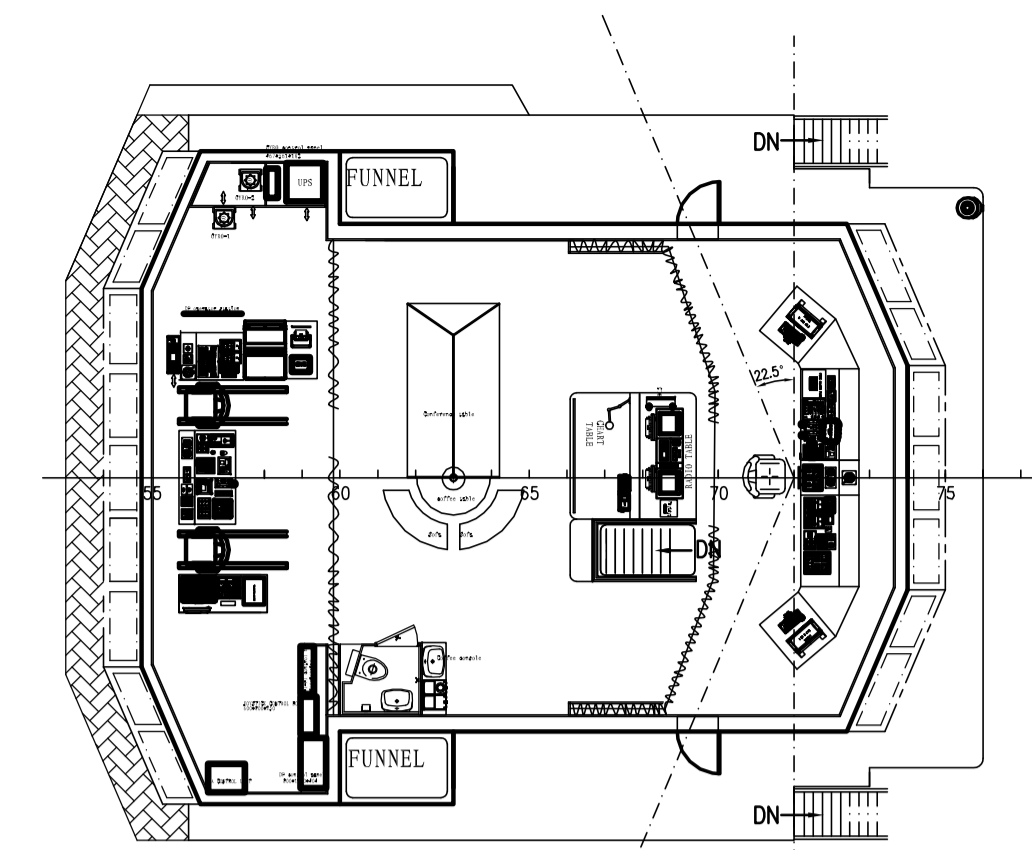
FIRE FIGHTING VESSEL CLASS1,  
OFFSHORE SUPPORTING VESSEL,  
E , +AMS, +DPS-1

A SECOND MASTHEAD LIGHT ABAFT OF AND HIGHER THAN THE FORWARD ONE SHALL BE EXHIBITED.

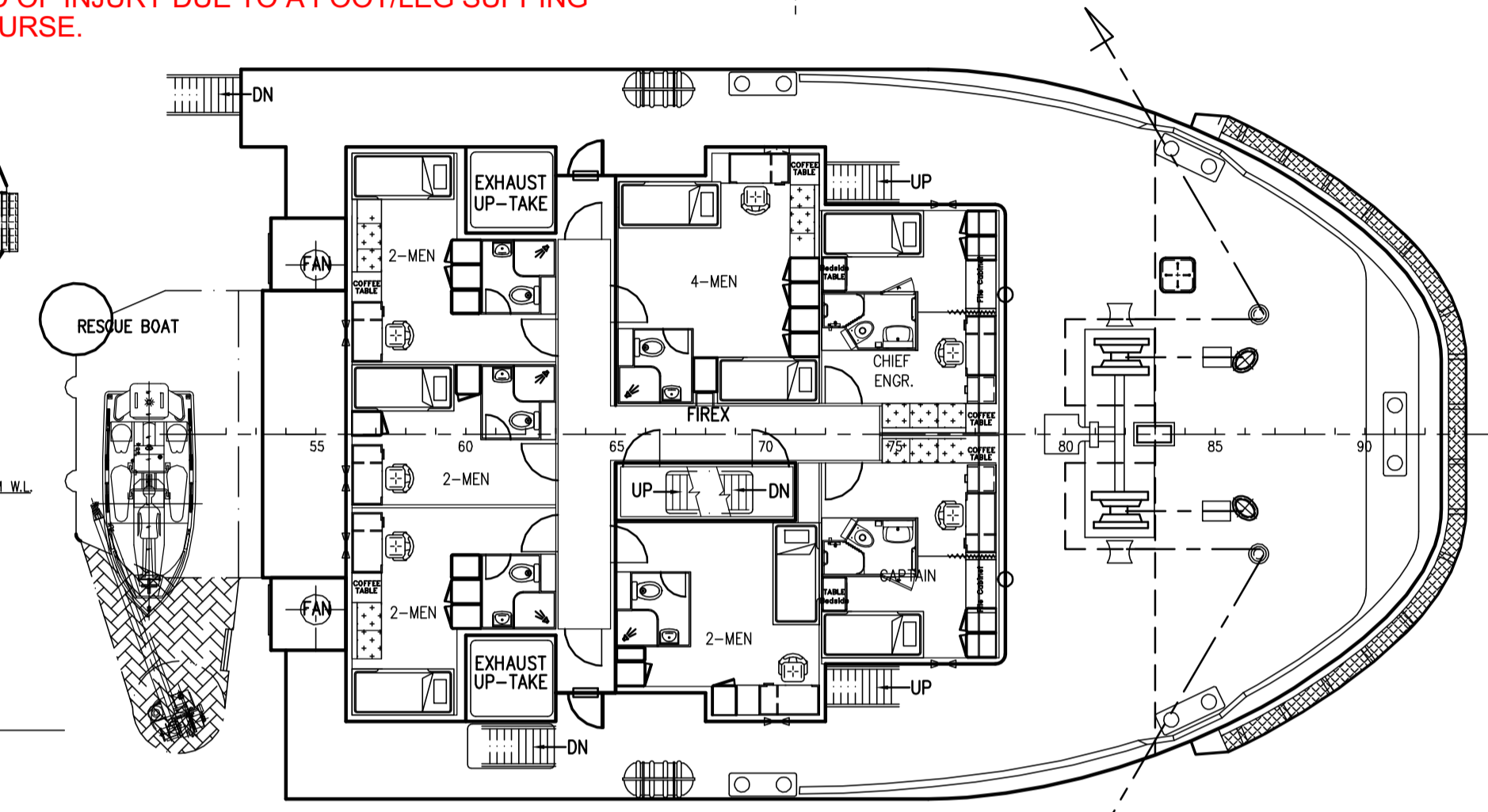
A RECOMMENDATION IS TO BE MADE THAT A TOE BOARD OR KICK PLATE BE INSTALLED ON THE DECK BELOW THE LOWER RAIL COURSE IN ORDER TO REDUCE THE LIKELIHOOD OF INJURY DUE TO A FOOT/LEG SUPPING UNDER THE LOWER RAIL COURSE.



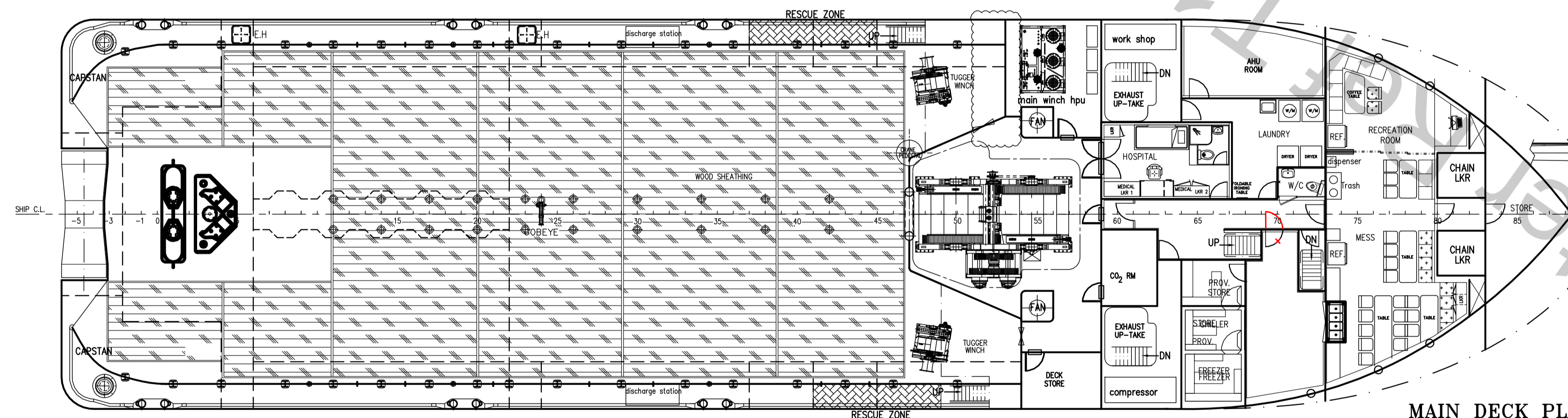
**OUTBOARD PROFILE**



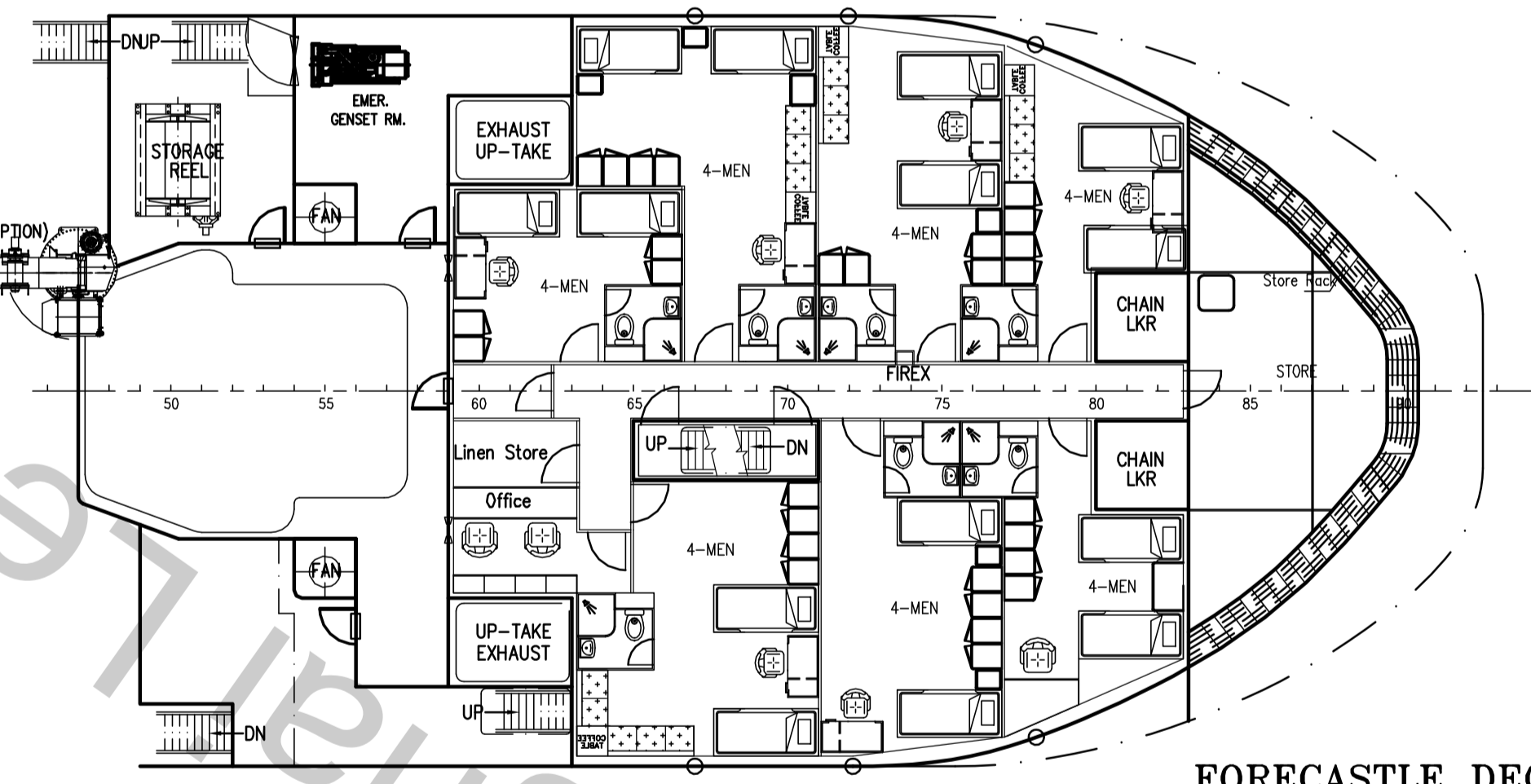
**NAV. BRIDGE DECK**



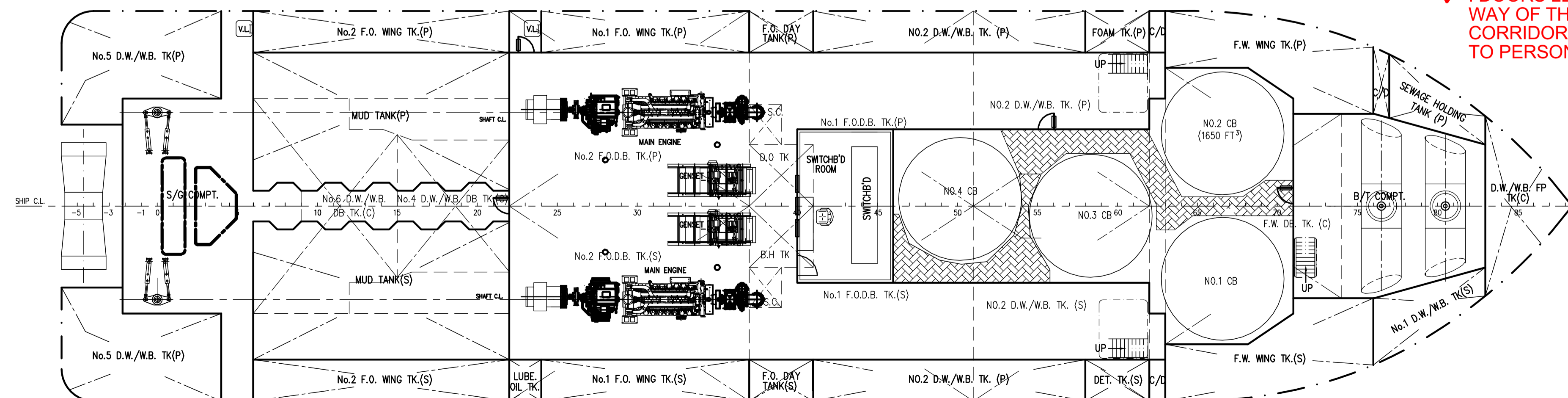
**UPPER FORECASTLE DECK**



**MAIN DECK PLAN**



**FORECASTLE DECK**



**BELOW MAIN DECK PLAN**

✗ : DOORS LEADING FROM SHIP'S OFFICE, GALLEY SHALL OPEN IN WAY OF THE DIRECTION OF ESCAPE. WHEN DOORS OPEN IN TO CORRIDORS, APPROPRIATE ARRANGEMENTS TO AVOID INJURY TO PERSONS IN THE CORRIDOR SHALL BE CONSIDERED.

SEE COMMENT L-001 ON ABS LETTER.

**REVIEWED**  
Details of this review are as indicated in the ABS Letter

**AS AMENDED**  
on pages: \_\_\_\_\_

THIS DOCUMENT AND THE INFORMATION IT CONTAIN IS COPYRIGHT AND REMAINS THE PROPERTY OF KHAM CHUAN MARINE PTE. LTD. IT IS NOT TO BE COPIED IN WHOLE OR IN PART OR DISCLOSED TO ANY THIRD PARTY FOR ANY PURPOSE WHATSOEVER WITHOUT PRIOR WRITTEN CONSENT.

1	ACCOMMODATION UPDATED AS YARD COMMENT	YUMINGYE	27.04.13
ITEM	DETAILS OF MODIFICATION	BY	DATE
CONSULTANT	<b>KC KHAM CHUAN MARINE PTE LTD</b>		
	15, HILLVIEW TERRACE, SINGAPORE 669226 TEL: 67753383 (6 LINES) FAX: 67753788 EMAIL: khamchuan@kcm.com.sg		
PROJECT	BUILDER: GUANGDONG YUEXIN OCEAN ENGINEERING CO., LTD.		
	58.7m ANCHOR HANDLING SUPPLY VESSEL		
TITLE	<b>GENERAL ARRANGEMENT</b>		
CLASSIFICATION	HULL NO.	YX3172/3173	
DRAWN	CHECKED	SCALE	DRAWING NUMBER
YUMINGYE		1:125	KCM/Q383(B)-G1
			REV.
			1