

A New Generation – For Next Generation Digital Signage.

Over the years, we have engineered, designed and delivered digital signage system solutions ranging from small applications to complex large-scale applications. Here is a small sampling of digital signage projects we have done.



Walmart

Considered one of our proudest partnerships, CE labs has been an approved vendor for Wal-Mart and its subsidiaries for more than ten years. Although our technology has changed over the years, our scope of work has remained highly focused on the in-store TV Wall.



Best Buy

Since May of 2009, CE labs and Best Buy have had an outstanding relationship. To this day, all the TV Wall digital signage, endcap displays, interactive displays and totems in every single Best Buy in the United States and Canada, are 100% fully powered by CE labs high performance digital signage players and Pro A/V distribution solutions.



Target

Target approached CE labs looking for a high definition digital signage player to successfully power their POP displays. CE labs had the perfect digital signage solution and integrated their economical solid-state network-ready digital signage players within 1,700 of Target's US retail locations.



Musical Instrument Museum

The Musical Instrument Museum approached CE labs in need of help rebuilding and designing their signage system. For years, the MIM has been an authority promoting music awareness to millions of people seeking information. Our work includes reorganizing all their content, setting up digital signage system and incorporating outbound music messaging.



Fred Meyer

CE labs' hardware and exclusive retail content powers 100% of Fred Meyer's locations. A crucial element to this project's success was our digital signage player's ability to not only function on a new HDMI-distributed wall but also serve older, legacy component driven walls. Our MP500 digital signage player, HDMI distribution amplifiers and premium content services has proven to be robust, reliable and cost effective.



Chuck E. Cheese's

Chuck E. Cheese was needing an All-in-One digital signage solution to completely revamp and control everything within their stores. From video content, lighting, audio, dancing Chuck E. Cheese band members and even the temperature in the building, CE labs created the perfect All-in-One digital signage solution to meet their needs.



Costco Canada

Costco Canada reached out to CE labs needing help improving their already established solution for television distribution. CE labs' set out to provide reliable digital signage players, distribution systems and high definition custom content and branding for Costco's products and services in 88 of their warehouses across Canada.



Lineage Power

Lineage Power wanted to expand their branding within the interior space of their company, with corporate messaging. CE labs introduced them to the application of Entryway digital signage. With use of our cost effective digital signage players and custom content management software, we provided Lineage Power a smart digital signage solution to meet their needs.



Fitness Connection

Fitness Connection is one of the top 25 largest health clubs in the United States. The Allen, Texas location reach out to CE labs® looking for a five 9-screen TV Walls with the ability to run cable television, entertainment and advertising content through an integrated digital signage player and TV Wall digital signage processor.



Dillard's

In mid-2012 CE labs was presented with the opportunity to develop a Display, for Dillard's, with an integrated media player. This CE labs display would be replacing an aging TV/DVD combo unit and would primarily to be used for vendor specific promotions. These displays would be located throughout the store and would need to meet specific retail environment demands.



Sharp

Sharp was just releasing their 80" AQUOS LED TV and wanted their campaign to entice consumers with an interactive push-button feature. In the Sharp brand section of Best Buy, CE labs® was able to meet Sharp's demands by the use of the MP500 digital signage player with GPIO push-button capabilities.



GoPro

GoPro got in touch with CE labs® looking for an All-in-One digital signage display to showcase their powerful imagery and videos, with interactive options. CE labs® AiO710 digital signage media controller accommodated GoPro's demands with flying colors. The AiO710 supports enhanced bitrates for better than Blu-ray video playback, perfect for GoPro's campaign.

MODEL #

MP70

NETWORK-READY

Digital Signage Player**H.264****ENHANCED
BITRATES****1080p****HDMI™****3D
READY**

A simple, yet powerful, network-ready digital signage player that provides the flexibility and reach needed for intricate digital signage systems, while keeping cost minimal. An essential component for digital signage systems needing network capability without having all the bells and whistles unnecessarily added.

• — KEY FEATURES — •

- Enhanced bitrate playback for Blu-ray quality 1080p output
- Integrated Webkit browser with proprietary video plugin for dynamic, easily programmable screen layouts using HTML
- Full featured playlist with advanced multi-playlist scheduling for a variety of media files
- Industrial grade metal chassis
- Reprogrammable timer, auto start, loop video, slide show features
- API for writing unique applications that are executed for special display control applications
- 75% lower power consumption than that of a PC
- 3D ready



• — SPECIFICATIONS — •

Video Output:	HDMI™ up to 1080p
Status Display:	Power LED
Audio Output:	Digital: Embedded in HDMI™ Digital/Toslink: Optical (Optional factory installed Output at time of order)
Control I/O:	SD card (Accessible) • 2.0 (up to 32GB) USB 2.0 • Host x 1 IR Sensor • Remote Control
Network Connection:	LAN: 10/100 BASE-T WiFi: 802.11 b/g/n (USB optional)
Video Format Support:	MPEG2: MP@HL (35 Mbps max HD) MPEG4.2: ASP@L5 MPEG4.10 (H.264): MP@L4.0 WMV9: 20Mbps max VC-1: AP@L3 Note: While player supports data rates up to 40Mb/s, it is best to average 35Mb/s or less for optimum performance
Graphics Format:	JPEG: Baseline, Progressive, GIF, PNG Recommended resolution 1366x768 full screen
Audio Format:	MPEG1: Layers I, II, III (MP3) 2.0 MPEG4: AAC-LC 5.1, HE-AAC 5.1 WMA9: w2.0
Accessories:	Remote Control • Quick Start Guide Dolby Digital License v.5.1

• — RECOMMENDED NETWORK SETUP — •

Bandwidth:	DSL • Cable • T1(128 Kbps. minimum) VSAT may work with custom setup
TCP/IP Address:	LAN: Any fixed IP address for each player WAN: Fixed public IP address for each player or router with its port forwarding enabled if players are behind a router
Required Ports for SNMP API:	Player port is fixed at 161 Source port 161 Player IP Destination Port 161
Storage Options:	Standard: 8 GB SD Card Optional: 8, 16, 32, GB SD Card USB Port: uses 2 to 32 GB USB drive
Network Protocol Support:	IP•TCP•UDP•ICMP•ARP•DHCP•HTTP•FTP IGMP•RTP•SNMP•NTP•DNS
Power:	Input voltage: 12VDC Power dissipation: 6 watts (max) AC/DC Adapter: 100-240 V 50/60Hz
Environment:	Operating Temp: 0 – 40° C Operating Humidity: 80% max, relative humidity, non-condensing
General:	Dimensions: 1" H x 6.0" W x 2.9" D Unit Weight: 1.4 lbs

MODEL #

NETWORK-READY

MP500 IP Digital Signage Player



Ultra high definition digital signage player, with multi-layering web browser features and optional GPIO push buttons. Capable of true high definition 1080p playback at extremely high bit rates, that produces pristine Blu-ray quality video. Designed for rugged commercial environments and cased in a sturdy industrial-grade chassis.

KEY FEATURES

- High definition real-time decoding, up to 25Mbps over Ethernet
- Multi-layering: video & web browser
- Integrated event logging
- UDP/TRP multicast stream MPEG2 & H.264 decoding
- Multi-layer support for browser overlays
- Available with internal compact flash storage
- QAM/ATSC Tuner input (optional)
- GPIO: push-button control – 8 ports (optional)
- Integrated playlist
- 3D ready
- Multiple control methods
 - QuickSign Pro v.500
 - CCM Enterprise Software
 - IR Remote
 - Manual updates via USB



SPECIFICATIONS

Video Output:	Component: 480p, 720p, 1080i, 1080p HDMI: 480p, 720p, 1080i, 1080p Composite: 480i Output: Simultaneous output, HDMI, Component, Composite
Audio Output:	L/R Stereo: R/L RCA SPDIF: coaxial, RCA
Control I/O:	GPIO (General Purpose Input/Output) Custom program can allow 2 outputs & up to 6 inputs via 2 RJ-12 connectors RS-232 Commercial Monitor Control IR Extender (on front panel)
Network Connection:	LAN: 10/100 BASE-T WiFi: 802.11 b/g (optional)
Video Format Support:	MPEG: MP@HL (35Mbps max HD) MPEG4: part 2 (20Mbps max HD) part 10 H.264 (15Mbps max HD) Composite: 480i WM9/VC-1: 20Mbps max
Graphics Format:	JPEG: on media layer (JPEG recommended resolution 1920x1080) Browser Support: HTML•BMP•TIFF•GIF•Javascript
Accessories:	Remote Control Optional: Component cable 2 meter HDMI cable

RECOMMENDED NETWORK SETUP

Bandwidth:	DSL • Cable • T1(128 Kbps. minimum) VSAT may work with custom setup
TCP/IP Address:	LAN: Any fixed IP address for each player WAN: Fixed public IP address for each player or router with its port forwarding enabled if players are behind a router
Required Ports for SNMP API:	Player port is fixed at 161 Source port 161 Player IP Destination Port 161
Storage Options:	Standard: 8 GB SD Card Optional: 8, 16, 32, GB SD Card USB Port: uses 2 to 32 GB USB drive
Network Protocol Support:	IP•TCP•UDP•ICMP•ARP•DHCP HTTP•FTP•IGMP•RTP•SNMP
Power:	Input voltage: 12VDC Power dissipation: 6 watts AC/DC Adapter: 100-240 V 50/60Hz
Environment:	Operating Temp: 0 – 40° C Operating Humidity: 80% max, relative humidity, non-condensing
General:	Dimensions: 1.1" H x 10" W x 4.25" D Unit Weight: 2.0 lbs

MODEL #

MP700

NETWORK-READY

Digital Signage Player

Developed and built specifically for digital signage applications, the MP700 focuses on exceeding the demands of low-cost, high performance standards in mid-to-large scale digital signage systems. Completely network enabled for updates over any network and an open API for writing unique applications for special control display functions.

— KEY FEATURES —

- Solid-state appliance with enhanced bit rate playback for Blu-ray quality 1080p output
- Network controlled API for controlling remote units over distributed networks
- Integrated Webkit browser with proprietary video plugin for dynamic, easily programmable screen layouts using HTML
- API for writing unique applications that are executed for special display control applications
- Operating system built on the power and security of Linux
- System status LCD
- Dual display and touchscreen capability
- 75% lower power consumption than that of a PC
- QAM/ATSC Tuner input (optional)
- GPIO: push-button control - 8 ports (optional)
- Integrated playlist
- Multiple control methods
- 3D ready



— SPECIFICATIONS —

Video Output:	Component: 480p, 720p, 1080i, 1080p HDMI: 480p, 720p, 1080i, 1080p Composite: 480i Output: VGA & HDMI, Dual screen support, including touchscreen
Audio Output:	L/R Stereo: R/L RCA Digital: Optical Toslink
Control I/O:	GPIO (General Purpose Input/Output) Custom program can allow up to 8 inputs RS-232 Commercial Monitor Control IR Extender (on front panel) Optional touchscreen (USB)
Network Connection:	LAN: 10/100/1000 BASE-T WiFi: 802.11 b/g (optional)
Video Format Support:	MPEG2: MP@HL (35Mbps max HD) MPEG4: part2 (20Mbps max HD) part10 H.264 (15Mbps max HD) Composite: 480i WM9/VC-1: 20Mbps max
Graphics Format:	JPEG: on media layer (JPEG recommended resolution 1920x1080) Browser Support: HTML•BMP•TIFF•GIF•Javascript
Accessories:	Remote Control Optional: Component cable 2 meter HDMI cable

— RECOMMENDED NETWORK SETUP —

Bandwidth:	DSL • Cable • T1(128 Kbps. minimum) VSAT may work with custom setup
TCP/IP Address:	LAN: Any fixed IP address for each player WAN: Fixed public IP address for each player or router with its port forwarding enabled if players are behind a router
Required Ports for SNMP API:	Player port is fixed at 161 Source port 161 Player IP Destination Port 161
Storage Options:	Standard: Removable 8 GB SD Card Optional: 8, 16, 32, GB SD Card USB Port: Unit can access content on a USB drive inserted into the side panel port
Network Protocol Support:	IP•TCP•UDP•ICMP•ARP•DHCP HTTP•FTP•IGMP•RTP•SNMP
Power:	Input voltage: 12VDC (Lockable power jack) Power dissipation: 7 watts
Environment:	Operating Temperature: 0 – 40° C Operating Humidity: 80% max, relative humidity, non-condensing
General:	Dimensions: 1.1" H x 8" W x 4" D Unit Weight: 2.0 lbs

MODEL #

ALL-IN-ONE & NETWORK-READY

AiO710 Digital Signage Player



An all-in-one digital signage player that provides interaction with digital signage displays through a 10" touchscreen interface giving the power and control to users through the use of their fingertips. With a rugged first generation iPad® quality touchscreen, the AiO710 provides the ideal solution for high volume traffic digital signage environments. RS232 and IR input/output control along with an open API for unique applications enable expanded interactive options for creative digital signage systems.



Used in tandem with CE labs' free content layout toolset – QuickSign Pro v.700, you may deploy custom interfaces that deliver your branded message accurately and consistently.

KEY FEATURES

- 10" touchscreen at 1024x768 resolution with 1080p video output
- Supports enhanced bitrates for better than Blu-ray video playback
- Integrated Webkit browser with proprietary video plugin for dynamic, easily programmable screen layouts using HTML
- API for writing unique applications that are executed for special display control applications
- Operating system built on the power and security of Linux
- IR control with keyboard/mouse support
- Dual display and touchscreen capability
- Internal speakers, gigabit ethernet port and vesa mount included
- 3D ready
- QAM/ATSC Tuner input (optional)
- USB WiFi Dongle (optional)
- USB Video Input Dongle (optional)

SPECIFICATIONS

Integrated Display:	9.7" XGA TFT LCD Resolution: 1024 x 768 Luminance, white: 300 cd/m² 2nd Video Output: Simultaneous output, HDMI, 1080p
Audio Output:	L/R Stereo: R/L RCA Digital: Optical Toslink
Control I/O:	RS-232 Commercial Monitor Control IR Extender (on front panel) Optional touchscreen (USB)
Network Connection:	LAN: 10/100/1000 BASE-T WiFi: 802.11 b/g (optional)
Video Format Support:	MPEG2: MP@HL (35Mbps max HD) MPEG4: part2 (20Mbps max HD) part10 H.264 (15Mbps max HD) Composite: 480i WM9/VC-1: 20Mbps max
Graphics Format:	JPEG: on media layer (JPEG recommended resolution 1920x1080) Browser Support: HTML•BMP•TIFF•GIF•Javascript

RECOMMENDED NETWORK SETUP

Bandwidth:	DSL • Cable • T1(128 Kbps. minimum) VSAT may work with custom setup
TCP/IP Address:	LAN: Any fixed IP address for each player WAN: Fixed public IP address for each player or router with its port forwarding enabled if players are behind a router
Required Ports for SNMP API:	Player port is fixed at 161 Source port 161 Player IP Destination Port 161
Storage Options:	Standard: Removable 8 GB SD Card Optional: 8, 16, 32, GB SD Card USB Port: Unit can access content on a USB drive inserted into the side panel port
Network Protocol Support:	IP•TCP•UDP•ICMP•ARP•DHCP HTTP•FTP•IGMP•RTP•SNMP
Power:	Input voltage: 12VDC (Lockable power jack) Power dissipation: 14 watts
Environment:	Operating Temp: 0 – 40° C Operating Humidity: 80% max, relative humidity, non-condensing
General:	Dimensions: 1.5" H x 12" W x 9" D Unit Weight: 4.0 lbs

MODEL # **MP60** STAND-ALONE *Digital Signage Player*

1080P HDMI 3D

Stand-alone 1080p high definition digital signage player that offers an easy and cost-effective advertising solution. Allowing the user to play an array of 1080p video and audio content.

KEY FEATURES

- Full high definition 1080p support
- Support for almost every audio and video format
- Supports Blu-ray disc format (MPEG-2, H.264, and VC-1)
- Compact and easy to carry – great for traveling
- Plays MPEG-2, wmv and H.264
- Supports USB and SD-card for storage & play
- Manual switching compatible with top and bottom, and side by side 3D files
- 3D ready



SPECIFICATIONS

Output	NTSC, PAL, 480p, 720p 50/60Hz, 1080i 50/60Hz, 1080p 50/60Hz
Resolutions:	4:3, 16:9, Auto
Aspect Ratio:	Video Formats: MPG, MPEG, WMV, MP4 (H.264) Video Codecs: MPEG2 (20Mbps), WMV (15 Mbps), H.264 (15 Mbps)
Video Support:	Audio Formats: MP3, MPA, WMA, AAC
Audio Support:	Audio Codecs: MP3, MPA, WMA, AAC
Graphics Format:	JPG • JPEG • BMP • GIF • PNG
Media Storage Support:	USB, SD card
Supported Subtitles:	UTF8 • ASS • SSA • ACSII • SUB • SRT
OS Languages:	English, Chines, Spanish, Russian, Portuguese, Korean and Hungarian
Power:	AC 100 to 240V, Output 5V 2A
Dimensions:	5.5" L x 3.5" W x 1" H
Package Contents:	Remote Control • AV Cable (HDMI) Power Cable • Manual



MODEL #
MP75

STAND-ALONE
Digital Signage Player



Compatible with industry standard high definition digital video formats, the MP75 offers an easy and cost-effective advertising solution, that allows the user to play an array of 1080p digital signage applications.

— KEY FEATURES —

- UDP/RTP multicast stream MPEG2 & H.264 decoding
- Supports Blu-ray disc format (MPEG-2, H.264, and VC-1)
- Plays MPEG-2, wmv and H.264
- Supports USB and SD-card for storage & play
- Manual switching compatible with top and bottom, and side by side 3D files
- (Optional) 5 4-pin GPIO ports: supports illuminated push buttons. Uses numbered folder structure for easy button assignments
- 3D ready



— SPECIFICATIONS —

Output	NTSC, PAL, VGA 1024x768, 720p 50/60Hz, 1080i 50/60Hz, HDMI
Resolutions:	1080p 24/50/60Hz
Aspect Ratio:	4:3, 16:9, Auto
Video Outputs:	HDMI, Component (RCA), VGA (DB-15), Composite (RCA)
Video Support:	Video Formats: MPG, MPEG, WMV, MP4 (H.264) Video Codecs: MPEG2 (20Mbps), WMV (15 Mbps), H.264 (15 Mbps) R/L stereo, SPDIF LCPM, SPDIF RAW
Audio Output Format:	Audio Formats: MP3, MPA, WMA, AAC
Audio Support:	Audio Codecs: MP3, MPA, WMA, AAC
Audio Outputs:	R/L RCA, TOSLINK, HDMI
Graphics Format:	JPG•JPEG•BMP•GIF•PNG
Media Storage Support:	USB, SD card
OS Languages:	English, Spanish, German, French
Power:	AC 100 to 240V, Output 12V 1.5A
Dimensions:	9.1" L x 5" W x 1.5" H
Package Contents:	Remote Control • Power Cable • Manual Optional: push buttons & wiring harnesses

DIGITAL SIGNAGE PLAYERS



SOFTWARE

CCM ENTERPRISE *Content Management Software*

A robust and flexible browser-based content management software that allows you to see the status of all digital signage players in your network and distribute your media to a large number of digital signage network players from a single centralized web application over a LAN or WAN.

• KEY FEATURES •

- Provides storage for video content
- Delivers video files to the digital sign controllers
- Organizes video files into play lists
- Schedules play times for the play lists
- Operating system built on the power and security of Linux
- Monitors status of the digital sign controllers
- Allows access from standard browsers on any PC, fully tested with Windows IE and Mozilla Firefox
- Includes features of CCM server for Linux, but with some additional features & runs on Windows PC or Windows Server
- Supports both high definition content and standard definition content



Compatible Browsers:



• FEATURE DETAILS •

Manage one to thousands of media players:

- Add, edit, remove players
- Assign names and locations
- View status
- Organize into groups
- Assign store information
- Comprehensive search and filtering (incomplete)

Maintain media files:

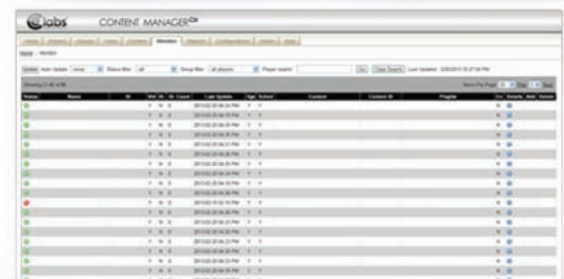
- Organize by groups
- Optionally assign owners
- Generating preview images
- Full HD video
- View files sizes
- User friendly ability to upload and remove videos
- Comprehensive search and filtering (incomplete)
- Images supported

Create content packages:

- Content packages group playlists, schedules, templates, and video files together
- Easily add, edit, or remove playlists, schedules, templates, and video files
- Assign a content package to a media player
- Organize into groups
- Comprehensive search and filtering

Additional features:

- Quickly create video playlists (user-friendly editor)
- Easily schedules video content
- Monitor player status - online/offline status, files and current playlists
- View reports - bandwidth usage, file upload history



QUICKSIGN PRO *Content Management Software*

A free, fast and simple content management software tool that allows you to quickly layout, deploy & manage your digital signage content. QS Pro provides the ability to organize videos, playlists, images, channels (ATSC or stream) & layouts to be used by the player on local networks. Use the many available pre-packaged layout templates or create your own custom layouts for specialized zones.

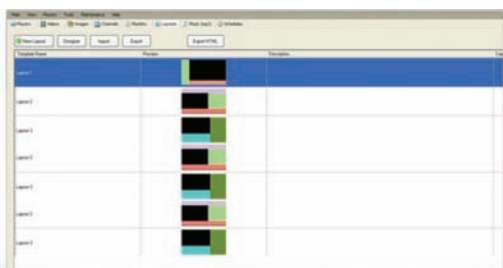
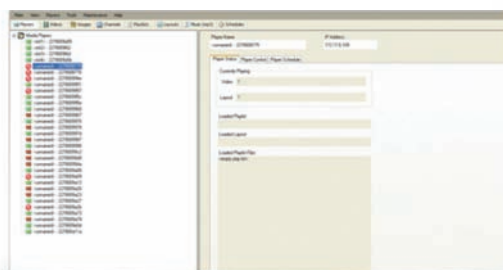
— KEY FEATURES —

- Provides storage for video content
- New layout template feature
- Setup browser layer
- Auto-search feature to find local players
- Video and Image Directory
- Utilize images for media display and place in correct layer
- Stream virtual channels on the same subnet
- ATSC Tuner (Series 7 media player lineup & MP500T units only)



— LIGHTWEIGHT ZONING TOOLSET —

Assign zones with distinct functionalities such as RSS feeds or slide shows in order to give your digital signage messaging a unique look. A very lightweight content management software, QuickSign Pro is very easy to learn and integrate into your internal production and marketing teams.



MODEL #

TV WALL PROCESSOR

DVP19**1 to 9 Display TV Wall Processor****1080p HDMI™**

The DVP19, Nine DVI output Cascadable TV Wall Processor, is a powerful most cost effective, and fully real time data/video processor for multiple flat panel displays or projectors. With high-definition real-time DVI output, the quality of the tv wall is guaranteed. The output display is scalable up to 255 by 255 squares.



Includes Installation Software CD and breakout Cables
 Note: DVI/HDMI™ converter required for HDMI™ compatibility
 (Also available in 1 to 4 Display: DVP14)

• KEY FEATURES •

- Supports CVBS (Composite), S-Video, Component, VGA input, DVI, HDMI from 640x480 to 1920x1200, interlaced or progressive
- Nine DVI outputs from 640x480 to 1920x1200 with a local DVI loop out for monitoring and adjustments
- Advanced video de-interlace for improving 480i and 576i SD video input
- PIP, PAB, Full screen modes and adjustable size and position through software; software control RS-232/RS-485
- Diversity of display setup possible
- Functions perfectly as a video screen splitter, video converter and video switcher
- Each DVI output has an independent controllable display area and can be cascaded to obtain more displays
- User-selectable output settings, up to 1920x1200
- Image parameters and layouts are automatically saved in flash memory of the device and can be recalled for later use
- Built-in long distance RS-232 control port over Cat-5e

• SPECIFICATIONS •

Video Format Support:	HDMI™, DVI, VGA, Component, S-Video, Composite
Resolution:	640x480 to 1920x1200 Progressive or Interlaced
PIP/PAP:	Only one digital and one Analog can be chosen in PIP or PAP mode
Video Local Output:	YES
Video Bandwidth:	DVI/HDMI (Single Link 4.95Gbps) VGA (165Mhz)
Supported Resolution:	Up to 1920x1200 @ 60Hz/ 1600x1200 @60Hz
Audio Support:	NO
System Control:	RS-232 / RS-485
Input TMD5 Signal:	1.2 Volts (peak-to-peak)
EDS Protection:	[1] Human body model - ± 19kV, [air-gap discharge] & ±12kV [contact discharge]
Input:	1 x DVI, 1 x S-Video, 1 x RS-485, 1 x RS-232
Output:	9 x DVI
DVI Connector Type:	DVI-1 (29-pin female)
VGA Connector Type:	HD-15 (15-pin D-sub female)
RS232 Connector:	DE-9 (9-pin D-sub female)
RCA Connector:	Female 75Ω
RJ45:	WE/SS 8P8C with 2 LED indicators
Power Supply:	AC 100-240V ; 60 Watts (max)
Environment:	<ul style="list-style-type: none"> • Operating Temperature: 0~60°C [32~104°F] • Storage Temperature: -20~60°C [-4~140°F] • Relative humidity: 20~90% RH [no condensation]

QM101 • QM102 *Single & Dual QAM Modulator*

HDMI™ Single & Dual Input QAM Encoders/Modulators that convert Digital Video Broadcasting (DVB) Standard and High definition video and audip signals to a QAM RF output.

KEY FEATURES

- Front panel LCD display for easy installation
- High resolution 1080i/1080p
- Standard, IRD, HRC
- Composite, Component, and HDMI™ (unencrypted) inputs
- MPEG2 or MPEG4 (AVC) video output
- QAM256/QAM64 selectable
- Closed Captioning support
- 40dBmV output
- Adjustable attenuation
- Rack mountable 1RU height
- Convert High definition video & audio signals to a QAM RF output
- Multi-video distribution
- Remote setup functions
- Remote monitoring and status
- Manual or Automatic Video input selection
- Very quiet while operating
- Easily replaces older analogue modulators
- ASI (optional)



QM102

QM101

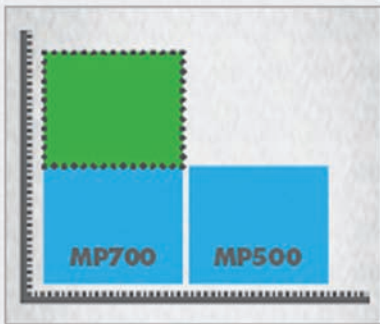
SPECIFICATIONS

	QM101	QM102
Input Connectors:	HDMI input (Video+Audio) or DVI (Video only) Y, Pb, Pr Component input (Video) Composite input (Video) L/R Channel Audio input (Audio) Coaxial SPDIF input (Digital Audio, LPCM) AC3 Pass Through Optical SPDIF input (Digital Audio, LPCM) 75Ω input impedance	HDMI input (Video+Audio) x2 or DVI (Video only) Y, Pb, Pr Component input (Video) x2 Composite input (Video) x2 L/R Channel Audio input (Audio) x2 Coaxial SPDIF input x2 (Digital Audio, LPCM) AC3 Pass Through Optical SPDIF input x2 (Digital Audio, LPCM) 75Ω input impedance
Video Support:	0.7 – 1.4V(peak-to-peak) 480i/480p/576i/576p/720P50/720P60 1080i50/1080i60 1080p50/1080p60–(AVC Encoding only)	0.7 – 1.4V(peak-to-peak) 480i/480p/576i/576p/720P50/720P60 1080i50/1080i60 1080p50/1080p60–(AVC Encoding only)
Audio Support:	Stereo/Digital 0.4 – 0.8V (peak-to-peak) HDMI™ 1.3c	Stereo/Digital 0.4 – 0.8V (peak-to-peak) HDMI™ 1.3c
Output Levels:	54–864MHz (Ch# 2-135) range 40 dBmV • 75 ohm • 6MHz bandwidth 1-10 dB ± 0.2dB Accuracy (11-20 reference) MER – 38 dB min.	54–864MHz (Ch# 2-135) range 40 dBmV • 75 ohm • 6MHz bandwidth 1-10 dB ± 0.2dB Accuracy (11-20 reference) MER – 38 dB min.
Modulation Support:	1080i/720p/576i/576p/480p/480i 1080p @ MPEG-AVC AVC MP@ Level4/MPEG2 MP@HL MPEG1 Layer II • AAC • AC-3 Pass through 64 QAM/256 QAM	1080i/720p/576i/576p/480p/480i 1080p @ MPEG-AVC AVC MP@ Level4/MPEG2 MP@HL MPEG1 Layer II • AAC • AC-3 Pass through 256 QAM
Power Supply:	12 VDC 3 Amp	12 VDC 3 Amp
Consumption:	1300 mA	1700 mA
Languages:	English	English
Dimensions:	482.7mm x 240mm x 44.4mm (19" x 9.45" x 1.75") 1RU	482.7mm x 240mm x 44.4mm (19" x 9.45" x 1.75") 1RU



SMP8670 PROCESSOR WITH ADVANCED VIDEO PROCESSING

Sigma's latest SOC provides a highly-integrated, high-performance, low-cost solution. Multi-task specific processors – with twice the power of current players on the market – lower power consumption and enable optimal application performance while also supporting full 3D video playback.



DUAL DISPLAY CAPABILITY

The Series 7 digital media appliances have twice the RAM and Flash as the previous generations of digital signage players providing for increased functionality in browser performance and dual display capability, including touchscreen operations. The two outputs can be mirrored for dual screen operation or split for HTML browser functions on the control touchscreen with full 1080p video output to the external HDMI port.



LINUX OPERATING SYSTEM

CE labs digital signage appliances use the stable and flexible Linux operating system that provides a secure, network-friendly and low cost platform. Linux provides persistent high performance during continuous up-times for hundreds of days without the need to reboot. Being an open source platform, project-specific applications can be easily written, compiled & pushed out to players in the field.



MULTIPLE AUDIO/VIDEO OUTPUTS

Multiple output support is crucial for any digital media appliance in order to power the many different displays out in the field. The Series 7 digital media appliances support HDMI, component, composite and VGA video outputs. Audio output support includes L/R Stereo and Toslink® optical audio making the series an adaptive solution for most any environment.



DOCUMENTED CONTROL PROTOCOL

IR output and RS232 control protocols allow development of custom control systems substantially increasing the flexibility and reach for any digital signage application.



INTEGRATED 14 DIGIT LED DISPLAY

The MP700 digital media appliance has an integrated 14 character LED display allowing easy readings of player operations and simplifies troubleshooting out in the field by providing essential information at a glance.



REMOVABLE SD STORAGE WITH SECURE UTILITY LATCH

Digital media files are secure with the utility latch preventing theft and insuring the SD card is firmly in place for media playback. The utility latch is made of the same rugged metal housing that finishes off the commercial-grade design of the chassis. (MP700 & AiO710 only)



WEBKIT BROWSER WITH PROPRIETARY VIDEO PLUG-IN

Specifically designed for truly custom content, the Series 7 digital media appliances come with an installed Webkit browser accompanied with a proprietary video plug-in for dynamic, easily programmable screen layouts using HTML5, Javascript and CSS.



www.celabs.net • ds.celabs.net • 1.800.767.6189 • 3209 Wood Drive • Garland, TX 75041