

Fitment of 275/65R18 tyres to a Range Rover Sport or D4 Using the Compomotive PD1880 18” rims

The following refers to a 2010 3.0 ltr RRS, however, fitment procedure should be similar on all RRS models excepting the 5.0 ltr Supercharged, which cannot fit 18” rims. A subset of these notes may also apply to D4 models.

Overview

The 275/65R18 tyre is a 32” diameter tyre and as such is 3” oversize when compared to the standard 255/50R19 fitted to 2010/11 models. Fitting of this size for on-road use may be illegal in some jurisdictions and owners should seek advice from the relevant road authorities.

Some modifications need to be made to the vehicle to enable the use of this size tyre. These require cutting of some internal plastic sections and the bending of some metal seams, but if done with care these are not noticeable to the casual observer. We also strongly recommend the fitting of the Green Oval Experience 2-position Height Sensor Rods. These rods allow the owner to quickly raise the vehicle by 50mm over all settings (access, on-road and off-road heights), thereby allowing full suspension articulation when using tyres of this size. See:

www.greenOvalExperience.com/eas_rods.html

for details.

Front fitment:

The outer edge of the front lower internal lip of the plastic wheel-well liner may need to be cut back 1” to 2” to prevent the front tyre from rubbing during turning manouvers. Check first for rubbing on full lock and refer to Fig 1 if mods are needed.



Figure 1: Cut back front lip and tie off with wire tie.

Test and re-cut if necessary.

Rear Fitment

With the wheel removed, remove the rear wheel-well liner from the car. At the front of the rear wheel-well, you will now see a metal seam approximately 300mm long protruding into the wheel-well space. Bend this back so that it is out of the way of the tyre. See Figure 2.

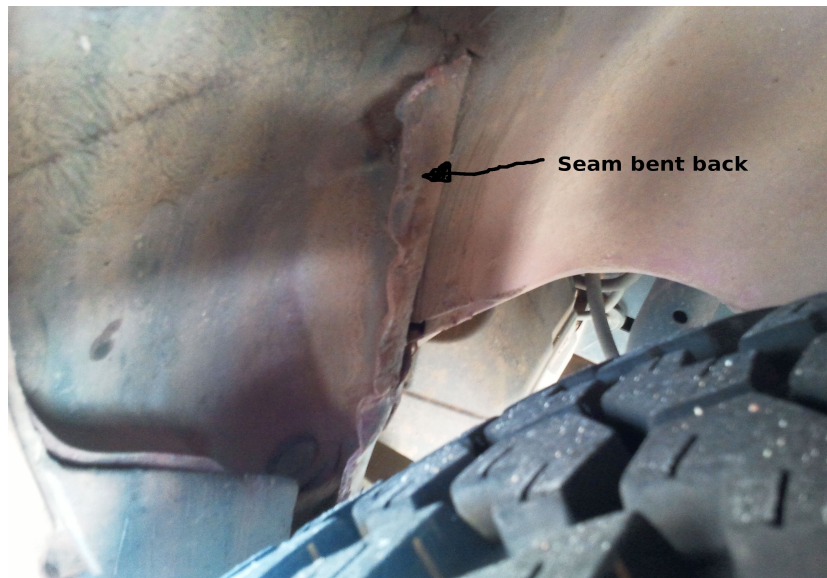


Figure 2: metal seam bent back (wheel fitted for reference only)

For the RRS, you will also need to modify the liner before refitting. NOTE: ***This might not be necessary for the D4.*** Cut it approximately in half and refit the rear half. Discard the front section. See Figure 3.

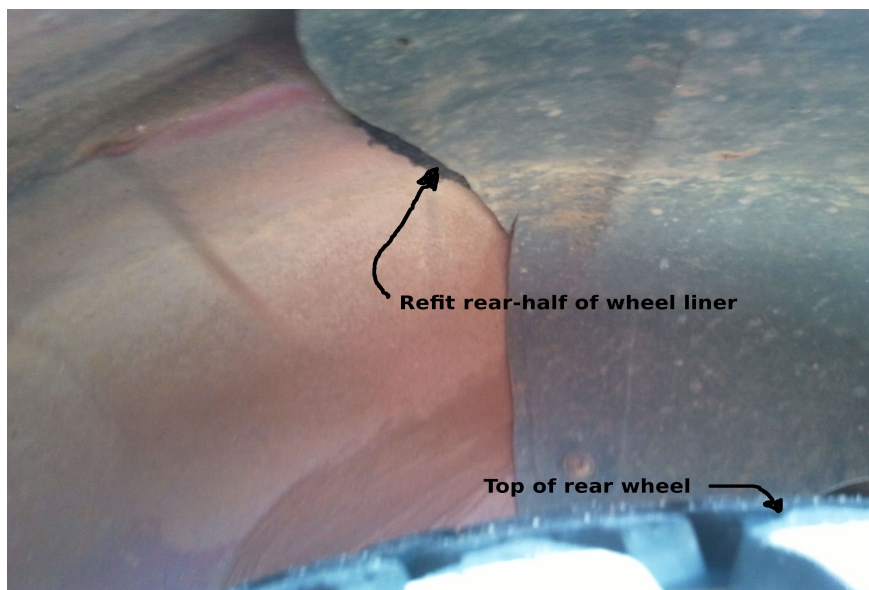


Figure 3: refit rear half of wheel-well liner

Optional

It is recommended that you fit the GOE EAS height sensor rods. When using these tyres, select the raised position to enable a 50mm lift for all height settings. Without this, you may experience rubbing when negotiating corners at normal height.



***Figure 4: GOE HS rod at +50mm setting
(the other locating hole at the bottom of the rod provides std height)***

Refit wheels and test.