

Hamlin County Sheriff's Office

2017 Annual Report

*“Serving our Communities with honesty, integrity and professionalism
with Leaders we trust and character that counts”*

The Year's Overview - Page 2

Crimes - Page 4

Other Calls for Service - Page 6

Traffic Accidents - Page 7

Traffic Violations - Page 8

Call Times - Page 10

Charts - Page 10

2017 Annual Report



THE YEAR'S OVERVIEW

BY: CHIEF DEPUTY TAYT ALEXANDER

It is our pleasure to present the Hamlin County Sheriff's Office 2017 annual report. Hamlin County, South Dakota spans over 538 squares miles and has a population just over 6,000 people. Hamlin County Sheriff's Office has one sheriff, one chief deputy, one administrative secretary and three deputy sheriffs. Our agency provides a number of services to the citizens to include 24/7 alcohol monitoring, answering calls for service, civil process, concealed pistol permits, D.A.R.E., fingerprinting, investigating crimes and accidents, inmate transports, safety talks, security for the courts, sheriff's sales and much more. During 2017, the department had 3,903 calls for service which consisted in 1,447 traffic violations addressed, 227 crime violations investigated, 231 accidents responded to and 1,756 other different types of calls for service answered.



Hamlin County Sheriff's Office
August 2017

The determination and the commitment from the staff members at the agency as well as the support by citizens within Hamlin County has made the sheriff's office successful last year. Overall crimes investigated by the agency has dropped for the third year in a row. Officers from the department responded and investigated 227 crimes which is down by 21 crimes from 2016 and 70 crimes from 2014. Crimes against property such as burglaries, theft and vandalism have dropped over the past few years. Last year, the Hamlin County Sheriff's Office only had 8 burglaries reported, 33 thefts and 25 vandalisms compare to just a few years ago in 2014, where the agency responded to 31 burglaries, 53 thefts and 38 vandalisms.

Unfortunately, not all crimes within the Hamlin County have gone down. Drug crimes, for instance, was one that the agency saw an increase following the rest of South Dakota's trend. In 2017, the Hamlin County Sheriff's Office had a total of 65 drug violations which consist of drug paraphernalia, possession of drugs such as marijuana and methamphetamine and distribution of such illegal drugs. The Hamlin County Sheriff's Office has been proactive in combating the drug issue by sending officers to trainings, providing programs such as D.A.R.E. to all three schools, started an internet anonymous tip line and increased officer's patrols and investigations. The general public has been very helpful to sheriff's office by providing tips, reporting suspicious activity and overwhelming support in our efforts.

2017 Annual Report



THE OVERVIEW CONTINUE

As Hamlin County continues to grow, the demand for the Hamlin County Sheriff's Office continues to nurture as well. This has been seen as the agency responded to 1,756 other calls for service compare to 2016's 1,416 and 2015's 1,285. These types of calls consist of 911 emergency calls, alarms, citizen assist, non-criminal disputes, junk complaints, security check requests, traffic complaints, welfare checks and so on. Traffic complaints was on the top of the list with a total of 265 calls followed by citizen/civil complaints with 245 calls and 210 animal complaints. Unlike other calls for service, traffic crashes remained relatively the same in 2017.

The sheriff's office took 231 vehicle accidents which is an increase by one from 2016. The most common accident was car vs wildlife taking up 57% of the total accidents. We also saw 89 other non-injury accidents, 9 injury accidents and 1 fatal crash last year.

Last year was unique for the agency with the most active months for the department was later in the year. November topped the list followed by October and December. In past years such as 2016, late summer months like August, July and September were typically the most active time for the agency. The busiest hour for the sheriff's department throughout the year occurred between 6pm and 7pm with just over 8% of all the calls made during that time frame. The most active part of the day for the office occurred during late afternoon and early evening as over half the calls made happen during this time.

Pushing into the 2018, the Hamlin County Sheriff's Office continues its efforts to provide the best services to the citizens, communities and schools within the region. The staff members of the department have participated in various community events last year such as community educational events, parades, shop with a cop, caring tree program and that is just to name a few. Our continued community policing has already extended into the new year with a couple events planned. If you have any ideas or would like to see any type events or safety talk, please feel free to contact us.

We encourage you to view the following pages to check out the department's statistics in depth. Please keep in mind that these are the calls of service done by the Hamlin County Sheriff's Office and do not include calls done by the Hayti or Lake Norden Police Department or state law enforcement agencies.

Thank you for taking time to check out our annual report. We hope that 2018 brings you a wonderful and safe year.

CRIMES

2017 Crime Violations	Bryant	Castlewood	Estelline	Hayti	Hazel	Norden	Poinsett	Rural	TOTAL
Abuse / Neglect								3	3
Aggravated Assault			2	1				4	7
Arson / Reckless Burning									0
Assault Against Law Enforcement		1							1
Assault by Bodily Fluids / Waste									0
Burglary / Attempted Burglary	1	1	2				1	3	8
Contribute to a Delinquency / Truancy									0
Disorderly Conduct / Indecent Exposure			1						1
Drug Crime (Other Drugs and Crimes)	8	6	14	2		1	2	10	43
Drug Crime (Marijuana)	3	2	3			2		12	22
Eluding / Escape									0
Embezzlement									0
Explosive / Violent Threats			1						1
Failure To Vacate			1						1
False Impersonation								1	1
False Reporting									0
Firearm / Weapon Violation						1	2	6	9
Forgery / Bad Checks								1	1
Fraud	3	1	4	2			1	4	15
Grand Theft			1				1	1	3
House of Public Nuisance / Furnishing									0
Hunting Violation									0
Interfering with 911 Service		1							1
Kidnapping									0
Manslaughter									0
Misprision of a Felony									0
Murder / Attempt Murder									0
Obstruction of Law Enforcement									0
Other Crimes / City Codes			1					1	2
Possession of Stolen Property									0
Rape									0
Resisting of Arrest									0
Robbery									0
Runaway		1	1						2
Sex Crimes / Child Porn	1	4	2		1			2	10
Simple Assault		2	4		2	1	1	5	15
Stalking / Harassing Calls / Invasion	1		3			1		4	9
Theft / Petty Theft	3	2	8	1	3		3	10	30
Threaten to Kill Law Enforcement									0
Trespassing			1					7	8
Underage Alcohol									0
Underage Tobacco				2				4	6
Vandalism / Property Damage	2	7		1			2	13	25
Vehicular Battery									0
Violation of Court / Protection Order			1	1				1	3
Total Amounts	22	28	50	10	6	6	13	92	227
Percent	8.5%	10.8%	19.2%	3.8%	2.3%	2.3%	5.0%	35.4%	

Over the Years Crime Violations	2017	2016	2015	2014	2013	2012	2011	2010	2009	2008
Abuse / Neglect	3	1	1	3	5	4	0	0	3	1
Aggravated Assault	7	4	4	2	3	3	7	8	4	4
Arson / Reckless Burning	0	0	1	0	0	0	1	1	0	0
Assault Against Law Enforcement	1	0	0	0	0	1	1	3	0	0
Assault by Bodily Fluids / Waste	0	0	0	0	1	0	0	0	1	0
Burglary / Attempted Burglary	8	9	3	31	32	18	7	27	23	33
Contribute to a Delinquency / Truancy	0	0	1	1	0	5	8	5	1	0
Disorderly Conduct / Indecent Exposure	1	8	34	39	26	12	16	7	14	3
Drug Crime (Other Drugs and Crimes)	43	30	8	5	7	1	1	2	30	21
Drug Crime (Marijuana)	22	29	4	4	6	5	7	21	NA	NA
Eluding / Escape	0	3	1	1	2	1	0	1	0	0
Embezzlement	0	0	0	0	0	0	0	0	1	0
Explosive / Violent Threats	1	1	0	0	1	0	0	0	0	0
Failure To Vacate	1	2	0	0	1	0	2	2	1	4
False Impersonation	1	1	3	0	1	2	0	2	1	0
False Reporting	0	0	1	0	0	0	2	2	0	0
Firearm / Weapon Violation	9	7	6	3	6	6	3	4	2	5
Forgery / Bad Checks	1	0	0	2	4	2	1	0	2	1
Fraud	15	21	22	21	7	6	3	5	1	3
Grand Theft	3	1	0	9	9	7	5	7	6	12
House of Public Nuisance / Furnishing	0	0	2	0	2	1	0	1	1	0
Hunting Violation	0	0	0	0	0	0	1	0	0	0
Interfering with 911 Service	1	0	1	1	1	0	0	1	0	1
Kidnapping	0	0	1	1	0	0	1	0	0	1
Manslaughter	0	0	0	0	0	0	0	0	0	0
Misprision of a Felony	0	0	0	0	0	0	0	1	0	0
Murder / Attempt Murder	0	1	0	0	0	0	0	2	0	0
Obstruction of Law Enforcement	0	1	2	2	1	0	4	6	1	1
Other Crimes / City Codes	2	3	2	10	4	5	3	6	1	3
Possession of Stolen Property	0	0	0	0	1	0	1	0	1	0
Rape	0	0	3	0	0	3	2	3	4	2
Resisting of Arrest	0	0	0	2	2	1	3	1	4	0
Robbery	0	0	0	0	1	0	0	1	0	0
Runaway	2	2	1	2	4	0	2	5	7	5
Sex Crimes / Child Porn	10	8	5	1	1	2	0	1	1	4
Simple Assault	15	13	19	25	13	11	25	23	21	29
Stalking / Harassing Calls / Invasion	9	14	22	10	8	12	6	2	6	11
Theft / Petty Theft	30	34	36	44	28	33	26	25	31	25
Threaten to Kill Law Enforcement	0	0	0	0	1	1	0	0	0	1
Trespassing	8	8	9	9	6	3	4	9	1	5
Underage Alcohol	0	3	41	24	7	17	18	22	40	15
Underage Tobacco	6	10	4	3	4	2	4	12	18	9
Vandalism / Property Damage	25	27	18	38	23	29	26	31	43	37
Vehicular Battery	0	0	0	0	0	0	0	1	0	0
Violation of Court / Protection Order	3	7	5	4	2	1	4	4	1	4
Total Amounts	227	248	260	297	220	194	194	254	271	240

Crime Monthly Stats	Bryant	Castlewood	Estelline	Hayti	Hazel	Norden	Poinsett	Rural	2017
Jan	0	1	2	1	1	1	1	4	11
Feb	0	1	2	2	0	0	0	2	7
Mar	0	3	3	0	0	2	3	12	23
Apr	1	2	19	0	1	0	1	9	33
May	11	3	2	0	1	0	2	9	28
Jun	1	4	2	0	0	3	2	5	17
Jul	2	5	3	0	0	0	1	3	14
Aug	2	3	1	1	0	0	0	11	18
Sep	1	1	3	2	0	0	3	7	17
Oct	2	2	3	2	0	0	0	14	23
Nov	1	1	6	1	3	0	0	12	24
Dec	1	2	4	1	0	0	0	4	12
Total Amount	22	28	50	10	6	6	13	92	227
Percent	8.5%	10.8%	19.2%	3.8%	2.3%	2.3%	5.0%	35.4%	

OTHER CALLS FOR SERVICE

2017 Other Calls (Not Crimes)	Bryant	Castlewood	Estelline	Hayti	Hazel	Norden	Poinsett	Rural	TOTAL
911-Hang Up Calls	21	20	9	6	5	6	4	95	166
911-Emergency (Fire / Medical)	10	14	13	7	3	9	9	70	135
Animal Complaint	11	36	20	1	1	1	5	135	210
Assist Another Department	1	2	6	8		12	10	67	106
Bomb Threat									0
Burglary / Fire Alarm	3	6	6	1	4	2	2	2	26
Civil Complaint / Citizen Assist	14	37	49	34	4	5	10	92	245
Death Investigation (Not Criminal)		1	1						2
Disturbing the Peace / Noise Complaint									0
Drowning									0
Family / Neighbor Dispute		6	8	2		1	1	4	22
Hazardous Materials Complaint		2	2		1			1	6
Junk Complaints		2	1	1				24	28
Field Contact	6	3	9					20	38
Fireworks Complaints		1					1	3	5
Open Door / Window		3	2					2	7
Other Incidents		10	15	6	3	1	3	23	61
Mental Health	1		1	1		2			5
Missing Person	1		1	1	1		1		5
School Assist		53	12			1		16	82
Security Check	55	45	66	1	1		3	23	194
Suicide Related Call		1	2	2				5	10
Suspicious Activity	3	9	6	1	1	1	3	21	45
Traffic Complaints	11	16	17	4	1	2	2	212	265
Transports				40				8	48
Welfare Check	5	4	3	1		3	6	23	45
Total Amount	142	271	249	117	25	46	60	846	1,756
Percent	11.1%	21.1%	19.4%	9.1%	1.9%	3.6%	4.7%	65.8%	

Over the Years for Other Calls	2017	2016	2015	2014	2013	2012	2011
911-Hang Up Calls	166	209	226	252	176	108	100
911-Emergency (Fire / Medical)	135	114	136	81	69	60	64
Animal Complaint	210	170	172	147	145	117	91
Assist Another Department	106	116	73	70	28	32	NA
Bomb Threat	0	0	0	NA	NA	NA	NA
Burglary / Fire Alarm	26	18	9	34	14	10	16
Civil Complaint / Citizen Assist	245	232	170	191	170	31	NA
Death Investigation (Not Criminal)	2	1	2	NA	NA	NA	NA
Disturbing the Peace / Noise Complaint	0	1	NA	NA	NA	NA	NA
Drowning	0	0	0	NA	NA	NA	NA
Family / Neighbor Dispute	22	25	16	9	17	16	20
Hazardous Materials Complaint	6	5	3	NA	NA	NA	NA
Junk Complaints	28	26	36	NA	NA	NA	NA
Field Contact	38	30	NA	NA	NA	NA	NA
Fireworks Complaints	5	3	0	8	1	11	NA
Open Door / Window	7	7	13	NA	NA	NA	NA
Other Incidents	61	49	42	163	175	82	80
Mental Health	5	6	4	NA	NA	NA	NA
Missing Person	5	2	2	2	8	4	NA
School Assist	82	15	2	NA	NA	NA	NA
Security Check	194	38	13	35	0	0	0
Suicide Related Call	10	10	8	7	8	6	9
Suspicious Activity	45	34	80	53	0	0	0
Traffic Complaint / Vehicle in Ditch	265	267	225	226	157	172	142
Transports	48	NA	NA	NA	NA	NA	NA
Welfare Check	45	38	53	25	25	37	54
Total Amount	1,756	1,416	1,285	1,303	993	686	576

TRAFFIC ACCIDENTS

Traffic Accidents	Bryant	Castlewood	Estelline	Hayti	Hazel	Norden	Poinsett	Rural	2017
Car vs. Deer								132	132
Non-Injury Accident		9	3	3		1	2	71	89
Injury Accident								9	9
Fatal Accident								1	1
Total Amount	0	9	3	3	0	1	2	213	231
Percent	0.0%	4.1%	1.4%	1.4%	0.0%	0.5%	0.9%	97.3%	

Traffic Accidents	2017	2016	2015	2014	2013	2012	2011	2010	2009	2008
Car vs. Deer	132	133	126	106	89	77	55	66	66	93
Non-Injury Accident	89	84	80	62	117	65	64	71	55	57
Injury Accident	9	12	12	11	27	17	13	14	12	11
Fatal Accident	1	1	1	1	1	1	2	2	1	1
Total Amount	231	230	219	180	234	160	134	153	134	162

TRAFFIC VIOLATIONS

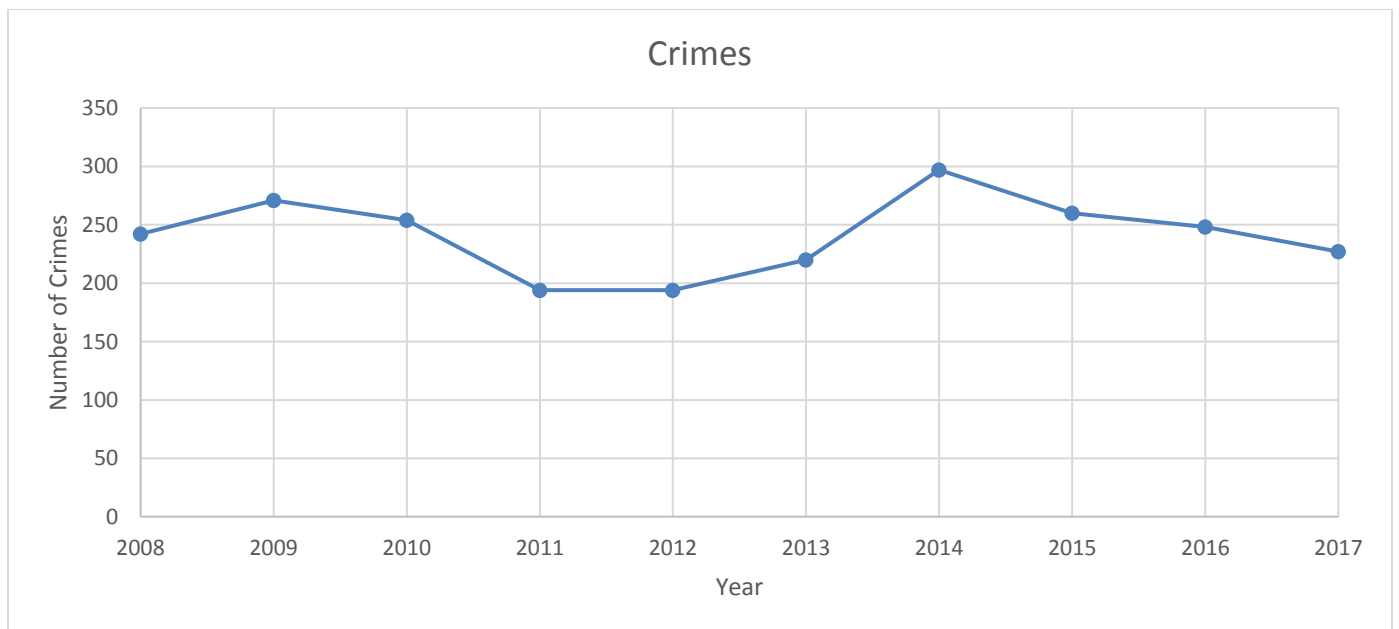
TRAFFIC VIOLATIONS	Bryant	Castlewood	Estelline	Hayti	Hazel	Norden	Poinsett	Rural	2017
ATV or Golf Cart Laws Violation									0
Burning Object from Vehicle									0
Careless Driving		1	3					7	11
Drag Racing									0
D.U.I.	1	1	5	1		1	1	23	33
Driving After Hours / License Restriction								2	2
Driving on the Wrong Side of Roadway		1							1
Driving While Revoked	2	2	1				1	8	14
Driving While Suspended		4	1					7	12
Driving Without Headlights	1								1
Equipment or Exhaust Violation	15	9	27	3			5	92	151
Exhibition Driving	4		2	2		1		1	10
Expired Plates / No Plates	4	4	7					13	28
Failure To Dim Lights	2	1	1				2	4	10
Failure To Yield at Intersection									0
Hit and Run with Death or Injury									0
Hit and Run		1							1
Illegal Passing								8	8
Illegal U-Turn / Illegal Turn									0
Move Over Law								2	2
No Driver's License / Canceled License	1	2	9	1			1	22	36
No Helmet on ATV or Motorcycle									0
No Proof of Insurance	5	9	9	2			3	30	58
Open Container in Motor Vehicle	1	1	2				1	7	12
Parking Violation		2	3						5
Passing School Bus's Red Lights									0
Reckless Driving				1				1	2
Seat Belt Violation	3		4				1	17	25
Speed – County Code (1-15mph)	1		2		1			43	47
Speed – County Code (Over 15mph)		1				1		27	29
Speeding – State Code (1-15mph)	25	45	61	4	4	2	79	578	798
Speeding – State Code (Over 15mph)	1	5	7	1			21	29	64
Stop Sign Violation	5	3	8	2			2	14	34
Substitution of Plates									0
Texting While Driving									0
Throwing Object or Load Violation				1				1	2
Traffic Control Device or Road Closure		2	5						7
Unauthorized Use of Vehicle			1					1	2
Unsafe Backing							1	1	2
Unsafe Lane Change	1	1	2				1	35	40
Total Amount	72	95	160	18	5	5	119	973	1,447
Percent	6.8%	9.0%	15.2%	1.7%	0.5%	0.5%	11.3%	92.5%	

TRAFFIC VIOLATIONS	2017	2016	2015	2014	2013	2012	2011	2010	2009	2008
ATV or Golf Cart Laws Violation	0	0	0	0	0	4	0	1	0	0
Burning Object from Vehicle	0	1	0	1	0	0	0	0	0	0
Careless Driving	11	29	13	10	31	18	8	12	9	12
Drag Racing	0	0	0	1	0	2	0	0	0	0
D.U.I.	33	36	10	16	20	7	11	19	16	10
Driving After Hours / License Restriction	2	2	2	2	2	3	2	1	7	3
Driving on the Wrong Side of Roadway	1	12	0	0	1	0	0	1	0	0
Driving While Revoked	14	5	6	7	2	2	2	5	2	3
Driving While Suspended	12	15	6	7	8	5	7	0	9	5
Driving Without Headlights	1	0	0	0	0	0	0	0	0	1
Equipment or Exhaust Violation	151	130	75	81	155	70	59	55	61	57
Exhibition Driving	10	10	7	9	8	11	8	5	4	5
Expired Plates / No Plates	28	27	18	12	21	21	15	29	22	20
Failure To Dim Lights	10	5	2	3	16	0	1	3	2	1
Failure To Yield at Intersection	0	1	2	1	3	1	1	1	1	0
Hit and Run with Death or Injury	0	0	0	0	3	1	3	4	3	1
Hit and Run	1	4	1	1	1	2	1	8	3	6
Illegal Passing	8	4	2	6	9	8	13	8	9	7
Illegal U-Turn / Illegal Turn	0	0	0	0	1	1	2	0	1	0
Move Over Law	2	10	3	9	13	7	1	3	3	5
No Driver's License / Canceled License	36	59	32	32	26	13	10	16	6	15
No Helmet on ATV or Motorcycle	0	0	1	1	2	0	0	1	0	0
No Proof of Insurance	58	83	82	77	115	43	39	34	52	42
Open Container in Motor Vehicle	12	12	5	8	14	8	11	6	12	5
Parking Violation	5	3	6	9	5	2	5	6	11	2
Passing School Bus's Red Lights	0	1	0	0	0	2	2	2	1	3
Reckless Driving	2	4	2	2	6	5	0	2	2	1
Seat Belt Violation	25	14	7	23	19	12	13	14	22	23
Speed - County Code (1-15mph)	47	57	52	60	43	44	30	25	5	NA
Speed - County Code (Over 15mph)	29	51	33	21	13	26	14	0	3	NA
Speeding - State Code (1-15mph)	798	789	587	661	785	471	331	337	443	287
Speeding - State Code (Over 15mph)	64	98	67	26	100	66	42	46	51	30
Stop Sign Violation	34	44	21	39	38	18	16	20	15	12
Substitution of Plates	0	0	2	0	2	2	0	1	2	1
Texting While Driving	0	0	0	0	0	0	0	0	0	0
Throwing Object or Load Violation	2	2	1	0	3	4	0	0	0	1
Traffic Control Device or Road Closure	7	9	6	5	0	4	5	5	1	2
Unauthorized Use of Vehicle	2	2	1	0	0	1	0	0	0	0
Unsafe Backing	2	0	0	0	0	0	4	2	3	1
Unsafe Lane Change	40	10	0	0	2	0	3	0	0	3
Total Amount	1,447	1,529	1,052	1,130	1,467	884	659	672	781	564

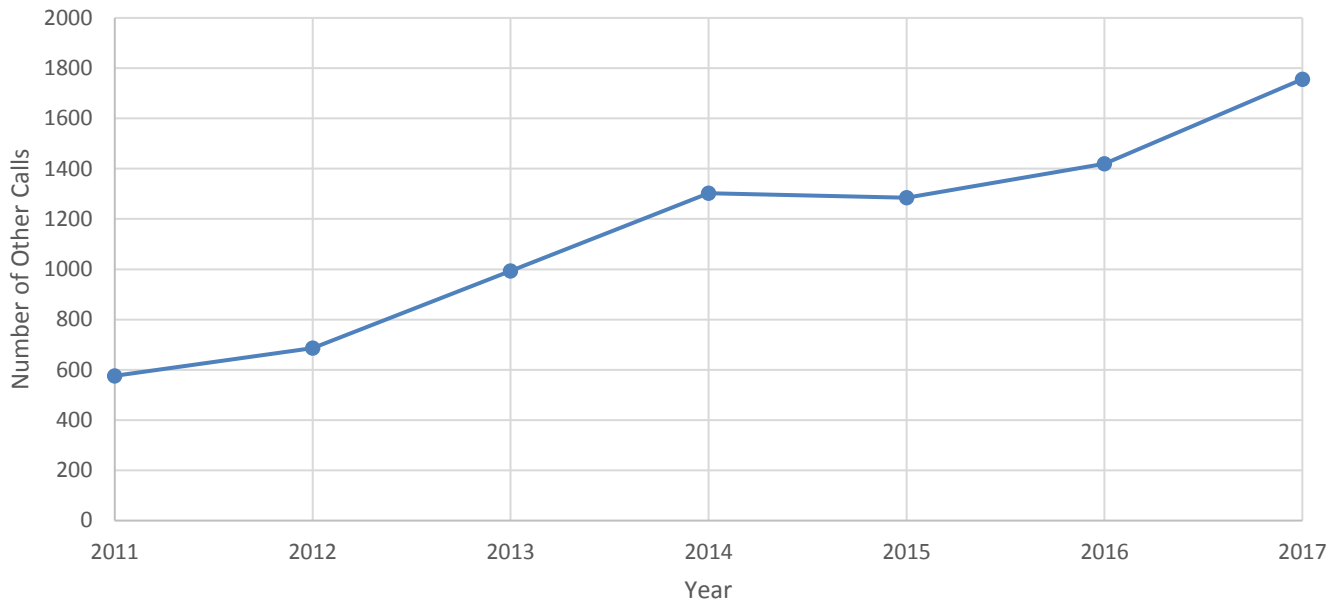
CALL TIMES

2017 Call Times	2017	2016	2015
0000 - 0059	3.73%	2.24%	2.70%
0100 - 0159	2.49%	2.07%	1.97%
0200 - 0259	1.29%	1.26%	1.41%
0300 - 0359	0.78%	1.03%	0.98%
0400 - 0459	0.51%	0.69%	0.43%
0500 - 0559	0.51%	0.52%	1.29%
0600 - 0659	0.97%	1.55%	1.60%
0700 - 0759	2.95%	2.99%	2.83%
0800 - 0859	3.69%	3.62%	4.24%
0900 - 0959	3.55%	3.56%	3.69%
1000 - 1059	3.04%	4.25%	4.61%
1100 - 1159	3.96%	4.25%	5.78%
1200 - 1259	4.10%	3.85%	5.29%
1300 - 1359	5.12%	5.05%	5.59%
1400 - 1459	5.16%	5.40%	5.10%
1500 - 1559	6.36%	6.66%	4.86%
1600 - 1659	7.42%	5.92%	6.21%
1700 - 1759	8.07%	7.64%	7.68%
1800 - 1859	7.47%	8.50%	7.38%
1900 - 1959	6.32%	7.06%	6.21%
2000 - 2059	6.73%	6.26%	5.65%
2100 - 2159	6.13%	6.72%	5.90%
2200 - 2259	5.72%	5.23%	5.65%
2300 - 2359	3.92%	3.68%	2.95%

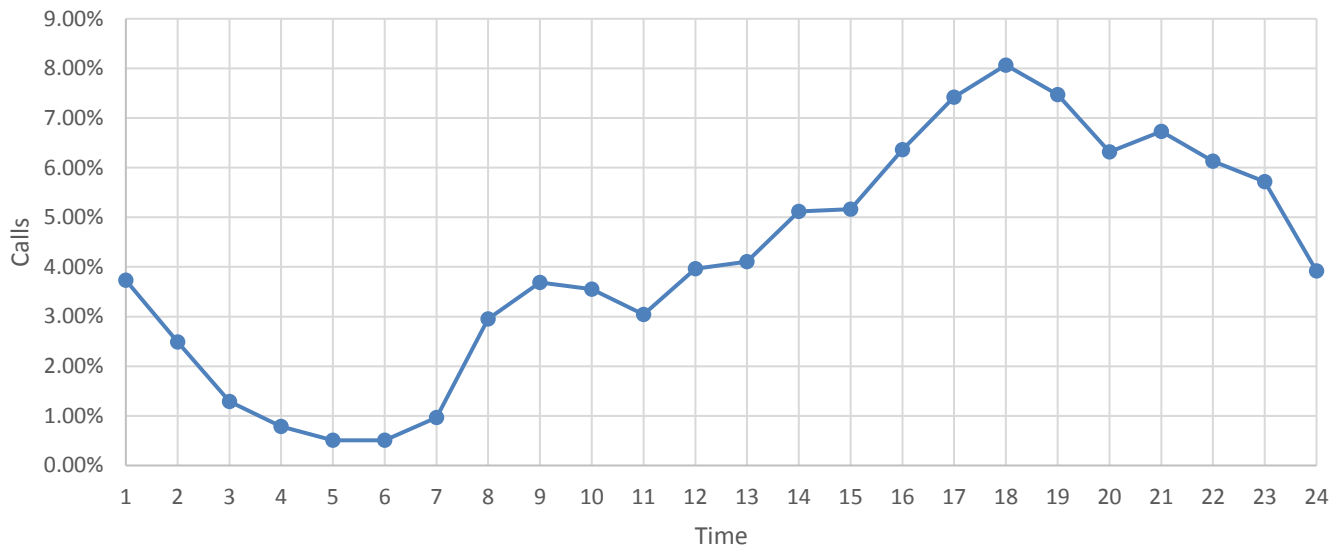
CHARTS



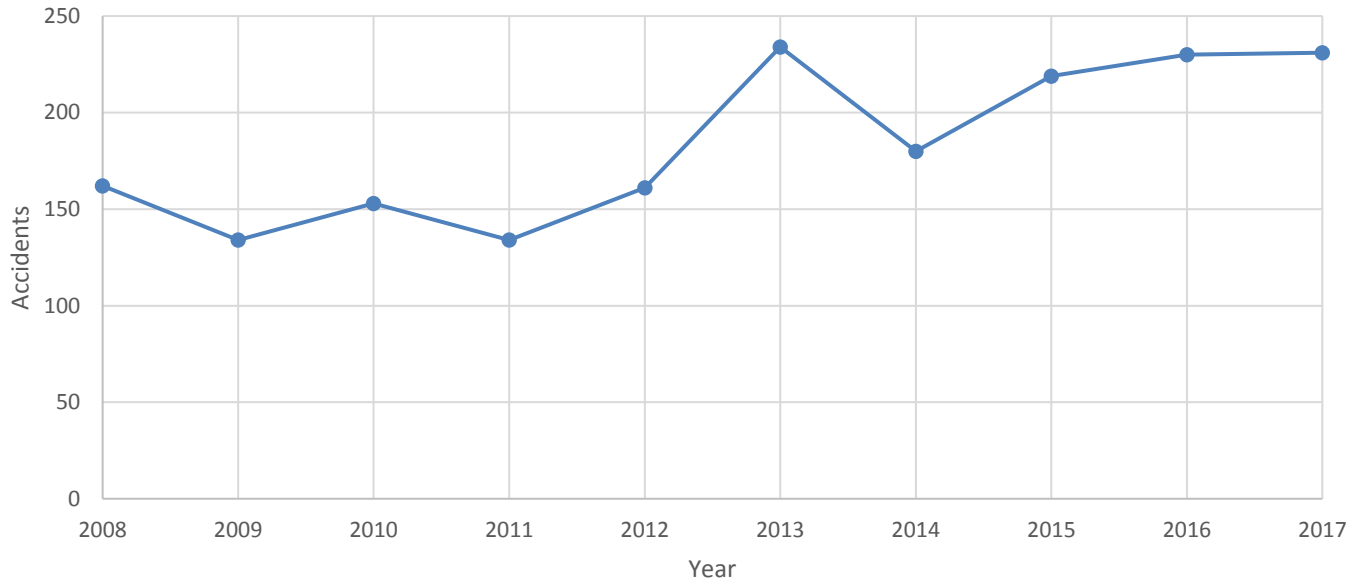
Other Calls for Service



2017 Call Times



Traffic Accidents



Traffic Violations

