

INNOVATING WITH METAL™



Architectural Metal Products



INNOVATING WITH METAL™

Quality Metalcrafts, LLC and its AMERICLAD® product line is a nationally recognized **Architectural Metal Fabricator** that has distinguished itself as an industry leader to the architectural construction market.

In addition to offering the industry's broadest selection of **Metal Wall Panel Systems**, AMERICLAD also offers one of the most in depth mixes of architectural metal products. The AMERICLAD product line represents the highest quality products with the intent to offer single source responsibility on your next project.

The company currently operates out of over 150,000 square feet of manufacturing facilities located in Minnesota and Texas.



CONTENTS

Fabrication Capabilities	3
Column Covers	4
Rainscreen Panel System	5
Barrier Panel System	6
Plate Panel Systems	7
Composite Panel Systems	8
Honeycomb Core Panel Systems	9
Glaze-In Panel Systems	10
Flat Lock Panel Systems	11
Flush & Soffit Panel Systems	12
Louvers	13
Sunshades	14
Equipment Screens & Screenwalls	15
Custom Trellis	16
Flat Sheet Products	17
AMERICLAD® Color Chart	18





FABRICATION CAPABILITIES

Quality Metalcrafts, LLC offers some of the most extensive, state-of-the-art fabrication manufacturing facilities offering capabilities that are unmatched by most. AMERICLAD fabricated products allow designers and contractors complete flexibility for many of their standard and custom sheet metal requirements meeting SMACNA guidelines for the highest quality outcome. Materials vary in gauges from .032" to .250" with both custom Kynar® painted or anodized finishes to meet the project requirement.

Capabilities Include:

- Shearing
- Forming
- Rolling
- Routing & Back Routing
- Custom Perforating
- Welding
- Polishing
- Hole Punching & Drilling
- Waterjet Cutting
- Laser Cutting
- Sawing

Materials Available:

- Aluminum
- Painted Aluminum
- Composite (ACM/MCM)
- Stainless Steel
- Perforated & Expanded Metals
- Steel
- Painted Steel
- Galvanized Steel
- Copper
- Zinc
- Titanium

Types of Fabricated Products Include:

- Sills
- Copings
- Flashings
- Stool Shapes
- Slab Edge Covers
- Panels
- Shadow Box Panels
- Backer Pans
- Angles
- Channels
- Subgirts
- Cees & Zees





COLUMN COVERS

AMERCLAD Column Cover Systems assist in covering unsightly beams or concrete columns to offer a finished and durable appearance. Column covers can be manufactured out of plate or composite material in various finishes and textures. Whether radiused, square, rectangular or oblong, we're able to help you meet the most demanding design requirements.

While many standard design options are available, Quality Metalcrafts can easily customize the columns for your desired appearance. This might include custom designed horizontal and vertical reveals, or base and head conditions.

Material options for AMERCLAD Column Cover Systems include aluminum plate, composite (ACM/MCM), stainless steel, copper or zinc. Custom finish colors are available when choosing aluminum with either Kynar 500®/Hylar 5000® painted finishes or anodizing.

AMERCLAD has the ability to produce a radius as small as 5½" in a single height up to 16 feet tall.



ARCHITECTURAL WALL PANEL SYSTEMS

AMERICLAD Architectural Wall Panel Systems feature a comprehensive selection of systems incorporating an extensive variety of substrates and finishes to meet the most challenging vertical wall applications.

Americlad offers two types of panel designs to meet your design criteria: **Rainscreen** or **Barrier Wall Systems**. AMERICLAD offers multiple Rainscreen panel systems that are **NFPA-285 approved**.

RAINSCREEN WALL PANEL SYSTEMS

Rainscreen Systems are considered dry joint systems with a caulk free design offering a crisp, clean, contemporary look. These systems are designed to offer the ability to control the impact of wind-driven rain and manage any water that may penetrate the wall system. A weather barrier is required behind the metal panels. AMERICLAD Rainscreen Systems are low maintenance and cost-effective and are offered in both Plate and Composite materials. All of AMERICLAD's systems are tested to ensure that the panels meet the performance criteria necessary to include air, water and structural tests. Systems tested include the traditional Back Ventilated System or a true Pressure Equalized System for ultimate performance.

AMERICLAD's latest development is its pressure equalized, **Rivetless System** which is a mechanically assembled system with the advantage of any unsightly rivets on the return legs. This *new and innovative* product is getting attention from architects worldwide. Aesthetically the most attractive of panels in the industry and from a performance perspective eliminates penetrations in the panel returns.



BARRIER WALL PANEL SYSTEMS

Barrier Wall Panels Systems, or commonly known as a Wet-Joint Systems, are more traditional panel systems that include a mechanically fastened clip attachment with exposed caulking at the panel joints. The system also has welded and ground smooth corners for weatherproofing the panel system. This system is designed when there might be a concern for any moisture build up behind the system. As a Barrier System, the wall panel does not allow for any water infiltration through its joints. Systems available in both Plate and Composite materials.

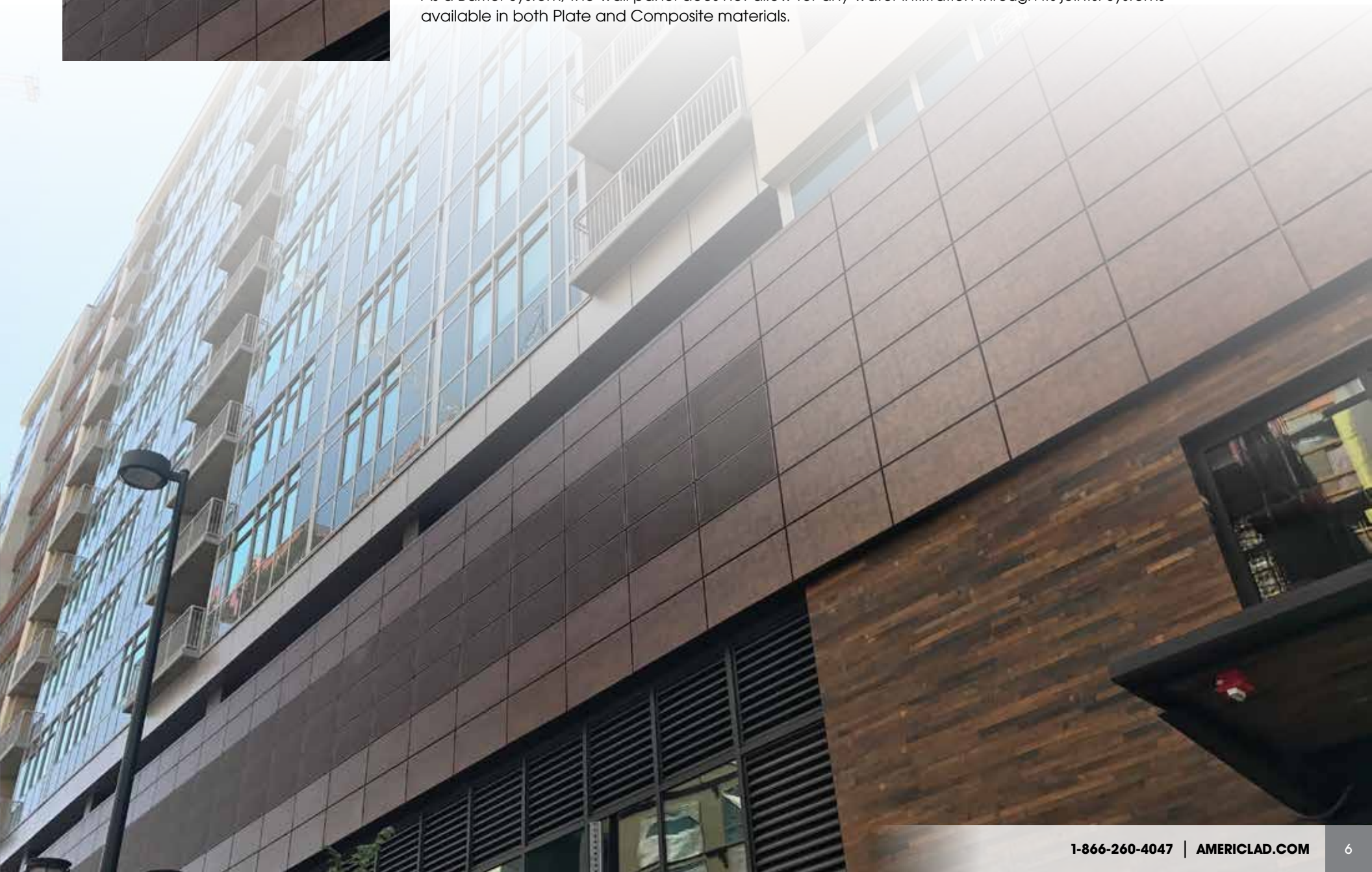


PLATE PANEL SYSTEMS

AMERICLAD Plate Wall Panel Systems incorporate a solid, non-laminated, non-combustible metal substrate. Plate Wall Panel Systems are one of the most flexible and durable products available in the marketplace. These panels are recommended for high traffic areas where a **higher impact resistance** is required.

AMERICLAD Plate Panel Systems are also available with **Perforated** or **Expanded** metal panel configurations. The product can also be **back routed for a sharper edge** appearance typically recognized with composite product.

AMERICLAD Plate Panel Systems are readily available in tested Rain Screen and Barrier Wall Systems offering the architect the versatility on any project.

The plate panel system can be made from aluminum which can be finished in a wide variety of high performance painted standard and custom colors. These finishes incorporate a 70% full strength Kynar 500/Hylar 5000 finish for a durable long lasting finish. Anodic finishes are also available in a number of colors.

AMERICLAD Plate Wall Panel Systems are available in a variety of substrate and material thicknesses, including:

- Aluminum (.080", .090", .100", .125", .190", and .250")
- Stainless Steel (18 ga, 16 ga, 14 ga, and 11 ga)
- Zinc (1.0 mm and 1.5 mm)



COMPOSITE PANELS

AMERICLAD Composite Wall Panel Systems incorporate **Metal Composite Material (MCM)** or **Aluminum Composite Material (ACM)** that utilizes a thermoplastic core bonded to metal skins. The product is available in a wide variety of substrates and finishes to complement virtually any project. The material is available in both 4 mm (.157") and 6 mm (.236") thicknesses. The composite is available with both Polyurethane (PE) or Fire Resistant (FR) cores.

AMERICLAD composite panel systems are readily available in tested Rain Screen and Barrier Wall Systems offering the architect versatility on any project.

AMERICLAD Composite Wall Panel Systems are processed with state-of-the-art equipment where the product is easily precision routed and formed to accommodate the specific panel system design.

Choosing MCM or ACM with aluminum skins offers a wide variety of manufacturer's high performance painted finishes in both standard and custom colors. These finishes incorporate a 70% full strength Kynar 500®/Hylar 5000® finish for a durable and long lasting finish. Anodic finishes are also available in a number of colors.

AMERICLAD Composite Wall Panel Systems are available in a variety of natural finishes as well including:

- Natural Brushed Aluminum
- Stainless Steel
- Zinc
- Copper





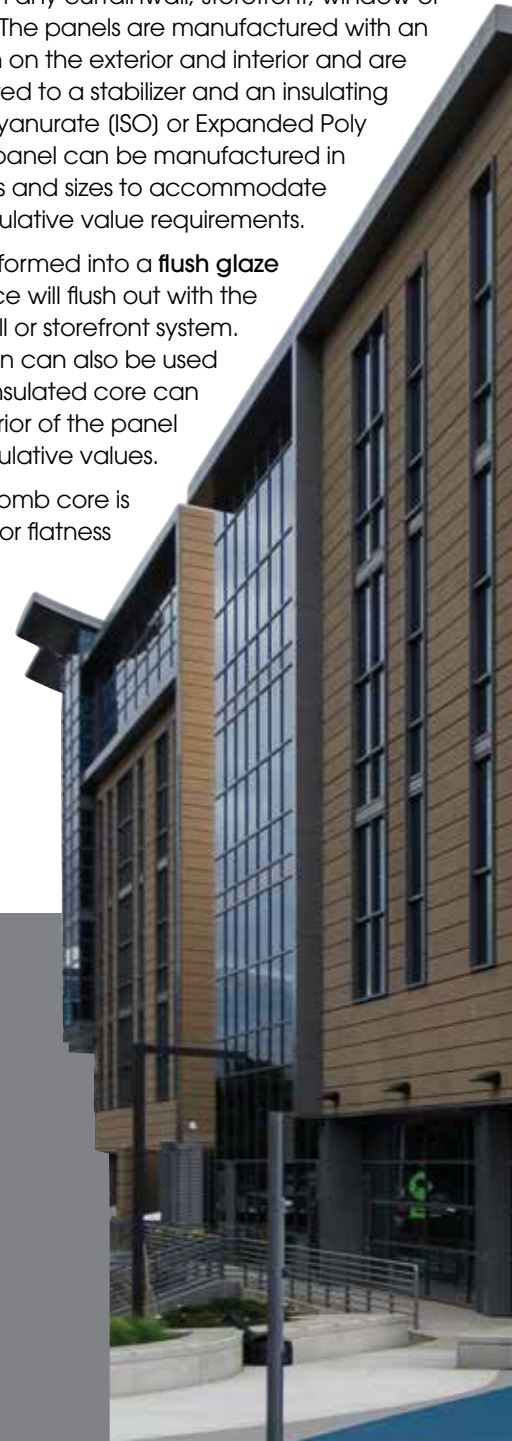
GLAZE-IN PANELS

AMERICLAD Glaze-In Panel Systems can be used as an alternate to glass in any curtainwall, storefront, window or spandrel application. The panels are manufactured with an aluminum metal skin on the exterior and interior and are traditionally laminated to a stabilizer and an insulating core of either Polyisocyanurate (ISO) or Expanded Poly Styrene (EPS). The panel can be manufactured in various metal thickness and sizes to accommodate the insulative value requirements.

The exterior skin can be formed into a **flush glaze panel** where the face will flush out with the curtainwall or storefront system.

A **rabbit edge** design can also be used where an additional insulated core can be bonded to the interior of the panel to reach very high insulative values.

An aluminum honeycomb core is also available for superior flatness and strength.



HONEYCOMB PANELS

The AMERICLAD Honeycomb Core Wall Panel System offers one of the **flattest** panel systems in the marketplace. The panel is manufactured in a 1" thickness and strengthened using a .375" cell aluminum core for **unsurpassed strength**. The core is bonded to .040" or .063" aluminum skins and is available in a variety of systems to meet the performance requirements.

Choosing the AMERICLAD Honeycomb Panel System with aluminum skins offers a wide variety of manufacturer's high performance painted finishes in both standard and custom colors. These finishes incorporate a 70% full strength Kynar 500® / Hylar 5000® finish for a durable and long lasting finish. Anodic finishes are also available in a number of colors.



FLAT LOCK PANELS

AMERICLAD Flat Lock Wall Panel Systems offer a simple yet elegant cladding solution that provides a longitudinal flat seam. The systems use a light gauge, single skin and a simple interlocking fold on all four sides and offer the flexibility to be installed on even the most geometrically challenging building. The ability to be installed either horizontally or vertically allows for fast and easy installation. The system choices offer either a traditional clip-style installation or an integrated clip design.

Substrate choices include:

- Painted Aluminum
- Painted Steel
- Anodized Aluminum
- Stainless Steel
- Zinc
- Copper
- Galvanized Steel

AMERICLAD offers a wide range of standard colors (see color chart on page 18) that are full strength 70% Kynar 500®/Hylar 5000® paint finishes.





FLUSH & SOFFIT PANELS

The AMERICLAD Flush and Soffit Panel is a single skin formed product that can be used in either a vertical application or as a soffit panel. The panel installs very easily with an interlocking design that is traditionally flashed with brakemetal. The system can be manufactured with a flush joint or a reveal condition to meet the design requirements.

Substrate choices include:

- Painted Aluminum
- Painted Steel
- Anodized Aluminum
- Stainless Steel
- Zinc
- Copper

AMERICLAD offers a wide range of standard colors (see color chart) that are full strength 70% Kynar 500®/Hylar 5000® paint finishes.



LOUVERS

AMERICLAD offers a full line of architectural Louver Systems to include **Drainable**, **Non-Drainable** and **Wind-Driven Rain** to meet the performance requirements necessary. All of the systems are designed to allow the flow of air into the building and achieve proper weather protection from the external elements.

Louvers not only offer the functionality of air flow, but can also serve as an aesthetic element or accent to the exterior of the building. The various systems are available in a wide variety of shapes, colors and sizes. Quality Metalcrafts, LLC is a member of the Air Movement and Control Association International (AMCA) which is the leading authority on louver design and performance testing to ensure that all members are meeting the stringent requirements necessary to supply a quality product.

Louvers are made from aluminum which can be finished in a wide variety of high performance painted standard and custom colors. These finishes incorporate a 70% full strength Kynar 500®/Hylar 5000® finish for a durable long lasting finish. Anodic finishes are also available in a number of colors.



SUNSHADES

Whether the sunshade is **Horizontal**, **Cantilevered**, **Suspended** or **Vertical**, AMERICLAD offers an array of standard systems. In addition, the architect and building owner have the ability to put their personal signature on their design by customizing the design economically with our state-of-the-art manufacturing and management systems.

Sunshades offer functionality by reducing or limiting solar heat gain and sun glare. This valuable component can substantially reduce the cooling energy requirements. In addition, sunshades offer an aesthetic element that provides a distinctive look for new and existing construction.

AMERICLAD Sunshade Systems can be made from aluminum which can be finished in a wide variety of high performance painted standard and custom colors. These finishes incorporate a 70% full strength Kynar 500®/Hylar 5000® finish for a durable long lasting finish. Anodic finishes are also available in a number of colors.





EQUIPMENT SCREENS & SCREENWALLS

AMERICLAD Equipment Screens and Screenwall Systems offer an elegant look by either using the product as a decorative screening in front of a curtainwall system or to hide roof top mechanical equipment to improve the building's aesthetic appearance.

Although AMERICLAD offers unique designs using extruded aluminum members for strength and durability, there are also many options where flush, perforated or flat wall panels can be incorporated in the design for the desired look.





CUSTOM TRELLIS

AMERICLAD Custom Trellis products can enhance any building structure with a design that can be customized to meet almost any type of configuration to meet the aesthetic element desired and turn it into reality.

With the custom trellis it is easy to incorporate other AMERICLAD products such as perforated panels, column covers or many of the other products available.

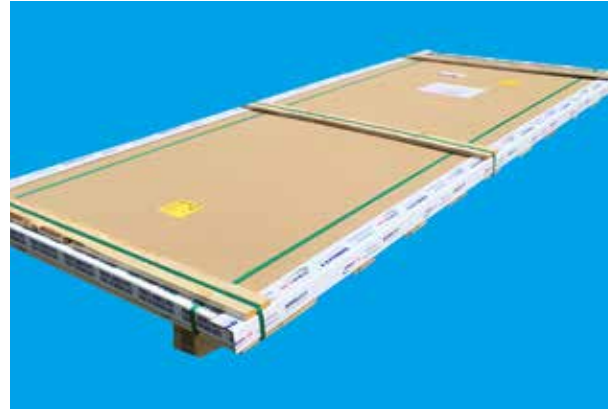
FLAT SHEET PRODUCTS

AMERICLAD complements all of its products by distributing a full line of architectural metal flat sheet for fabrication of flashings, trim and other sheet metal accessories.

Products include the following items:

- **Painted Aluminum** Full Strength 70% Kynar 500®/Hylar 5000® in 30 standard colors
> .032", .040", .050", and .063"
- **Painted Galvanized Steel** Full Strength 70% Kynar 500®/Hylar 5000® in 30 standard colors
> 24 gauge and 22 gauge
- **Custom Painted Aluminum & Steel** Full Strength 70% Kynar 500®/Hylar 5000®. Finishes can be easily matched to meet any custom color requirements
- **Anodized Aluminum** in Clear Satin, Black, Extra Dark Bronze, Dark Bronze, Medium Bronze, Light Bronze, Champagne
> .040", .063", .080", .090", .125"
- **Mill Finish 3003-H14 & 5052-H32 Aluminum**
> .032", .040", .050", .063", .080", .090", .125", .250"
- **Mill Finish 5005-H34 Anodizing Quality Aluminum**
> .040", .063", .080", .090", and .125"
- **Stainless Steel** in #4 Brushed Satin, #8 Mirror Polished & other various finishes and textures
> 24 ga, 22 ga, 20 ga, 18 ga, 16 ga, 14 ga, 11 ga
- **G90 Galvanized Steel**
> 26 ga, 24 ga, 22 ga, 20 ga, 18 ga, 16 ga, 14 ga, 11 ga
- **Aluminum Composite Materials (ACM)**
> 4 mm, 6 mm

All of the products above aside from Composite Sheet are stocked standard lengths of 48" x 96", 48" x 120" and 48" x 144" as well as custom cut sizes to optimize the metal fabricators yields. Some products are also available in 60" & 72" widths. Please check with your AMERICLAD sales staff for details.



AMERICLAD COLOR CHART

Fluropon®, Kynar 500®/Hylar 5000® Standard Colors



Stone White Bone White Almond Sandstone Slate Gray



Dove Gray Charcoal Gray Sierra Tan Medium Bronze Dark Bronze



Extra Dark Bronze Matte Black Burgundy Colonial Red Terra Cotta



Mansard Brown Bright Red Military Blue Deep Blue Teal



Patina Green Ivy Green Forest Green Hartford Green Hemlock Green



Island Green Silver Copper Champagne Electric Blue

Americlad Premium Colors

COMPANY PROFILE

Since the company's inception in 1994 Quality Metalcrafts, LLC/ AMERICLAD has distinguished itself as one of the premier custom metal fabricators and manufacturers to the architectural construction market.

Our attention to detail, superior quality and value oriented methodology is nationally recognized. The company is supported with a team of knowledgeable professionals to support you with product information for a successful and timely project completion

TECHNICAL DESIGN ASSISTANCE AND SUPPORT

When choosing an AMERICLAD product or system for your next project, you can rest assured it will be a smooth process. With our knowledgeable team, we can provide prompt product information support from the design development stage through to final project completion. We help you take your project from inception to completion by offering:

- Assistance during the design process
- Value engineering to choose the right product for the application
- Design the product in the most economical manner without jeopardizing aesthetic appeal or performance
- Comprehensive submittal drawings through computer aided drafting and modeling software
- Virtually unlimited choices of finishes including architectural painted, anodized, polished or textured finishes

WEBSITE

Our website offers the most in-depth information to assist you in your decision making process. Please visit our website at www.americlad.com. Our website is a resource for more detailed product information including system specifications, testing data, technical information and new product announcements. Please feel free to call us at 1-866-260-4047 for additional information on our AMERICLAD product line or for any design assistance you may require.

