

FOR IMMEDIATE RELEASE – September 13, 2017

Michael Roque Collins: *Inland Mountain Journey*

Exhibition Dates: October 27 – November 26, 2017

Artist Reception: Fri, October 27, 5 – 7 pm

Gallery Hours: Mon – Fri, 10-6
Sat, 10-5

LewAllen Galleries

1613 Paseo de Peralta | Santa Fe, NM 87501
505.988.3250

www.lewallengalleries.com

Press Contact: Alex Gill

agill@lewallengalleries.com



Inland Crossing, 2016-17,
oil on linen, 40 x 50 in



Remembrance of the Temple, 2016-17,
oil on linen, 50 x 60 in

Santa Fe, NM - Michael Roque Collins is recognized as a painter of landscape as metaphor through decades of creating post-symbolist art. With imagery drawn from lucid dream, memory, and cultural myth, Collins is regarded for his powerful canvases that explore cycles of destruction and regeneration as the allegorical context for archetypal issues of the human condition. LewAllen Galleries is proud to present a major exhibition of new paintings by Collins, entitled *Inland Mountain Journey*, with an artist reception on the evening of October 27th from 5 – 7 pm, and extending through November 26.

This exhibition highlights Collins' latest series of paintings, a body of work that engages

relationships between the physical world and the spiritual, between cultural memory and personal psyche – intersections of place and meaning. In their evocation of what Collins terms 'sacred landscapes,' these mountain journeys suggest a sense of psychological pilgrimage through isolated ponds, gateways of trees, radiant valleys, and crumbling ziggurats of classical ruins hidden among dense foliage.

Informed by his travels to Venice, Florence, Pompeii and South America, Collins has internalized architectural grandeur converged with historical story inspired by those sacred grounds. His landscapes are rendered as composites of locations that evoke Earth's various states of entropy -- tides, storms, erosion, and volcanic forces -- as metaphorical signifiers of intense human struggle that lead toward the possibility of individual transcendence. With a home and studio in Houston,

Texas, has experienced personally the cataclysmic effects of these forces that are revealed in his art.

Collins' visceral engagement with his materials – thick impastoed oil paint and other mixed media– reflects the conceptual relationship in his art between material decay and metaphysical renewal. Beginning with chiaroscuro underpainting, Collins builds his paintings using bold gestural marks, successive layers of pentimenti, rich color and hue, carefully modulated and thickly applied.

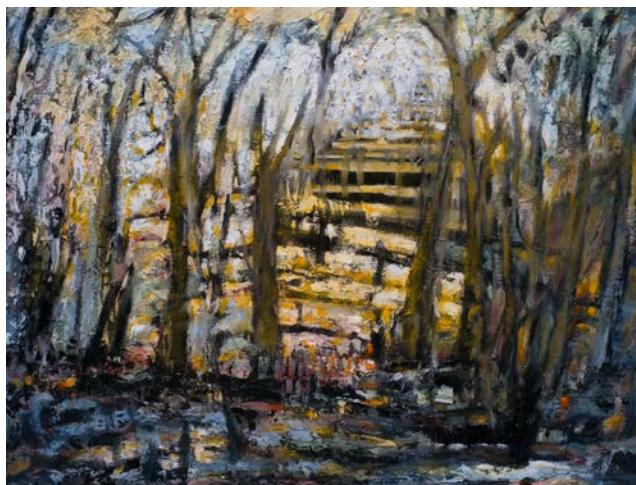
His pictorial techniques allude to natural cycles of order and disorder, memory and history, enlightenment and darkness—root aspects of the human condition, the collective unconscious, and the natural order.



Forest Basilica, 2016,
oil on linen, 30 x 40 in

The introduction of especially vibrant coloration in these new works manifests their transition into unequivocal allegories of redemptive hopefulness. In these new paintings, the forces of nature and their cycles of regeneration represent the odyssey of humankind, imprinting new hope and revelations of the soul that come from the constant natural rhythms epitomized in the *Inland Mountain Journey* series.

Born in Texas in 1955, Collins earned a BFA from the University of Houston and later an MFA in painting from Southern Methodist University. With a career spanning nearly 45 years, his paintings have been shown in more than fifty international and U.S. museum and gallery solo exhibitions and scores of group shows. Collins has been honored with significant awards including the Bioethics and Human Rights Global Art Competition Prize from the United Nations Education, Scientific and Cultural Organization.



Golden Temple, 2016,
oil on linen, 30 x 40 in