

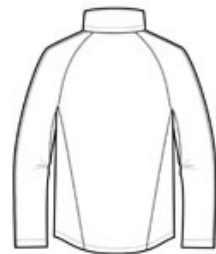


Our versatile, fully seam-sealed jacket offers outstanding waterproof protection to keep you dry whether you're on the job or on the trail. Folds into a convenient carry pouch for easy, compact storage.

- 100% polyester
- 100% polyester mesh-lined body and hood
- 5000MM fabric waterproof rating
- 1000G/M2 fabric breathability rating
- Zip-off hood
- Contrast waterproof zippers
- Adjustable self-fabric tab cuffs with hook and loop closures
- Front zippered pockets
- Port Pocket™ for easy embroidery access
- Open hem with locking drawcord
- Drawstring carry pouch included

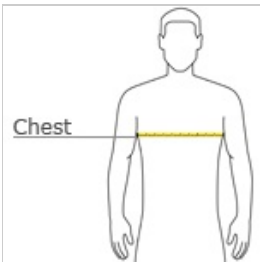


front



back

**HOW TO MEASURE**




**CHEST**  
With arms down at sides, measure around the upper body, under arms and over the fullest part of the chest.

**SIZE CHART**

	XS	S	M	L	XL	2XL	3XL	4XL
Chest	32-34	35-37	38-40	41-43	44-46	47-49	50-53	54-57

**COLOR INFORMATION**

							
Black PMS Ntr BlaCK CPMS 7691 C	Direct Blue PMS 286 C	Engine Red PMS 193 C	Magnet PMS CL GY 11 C	Orange Crush PMS NO MATCH	Slicker Yellow PMS 1235 C	True Navy PMS 533 C	Vine Green PMS 7741 C