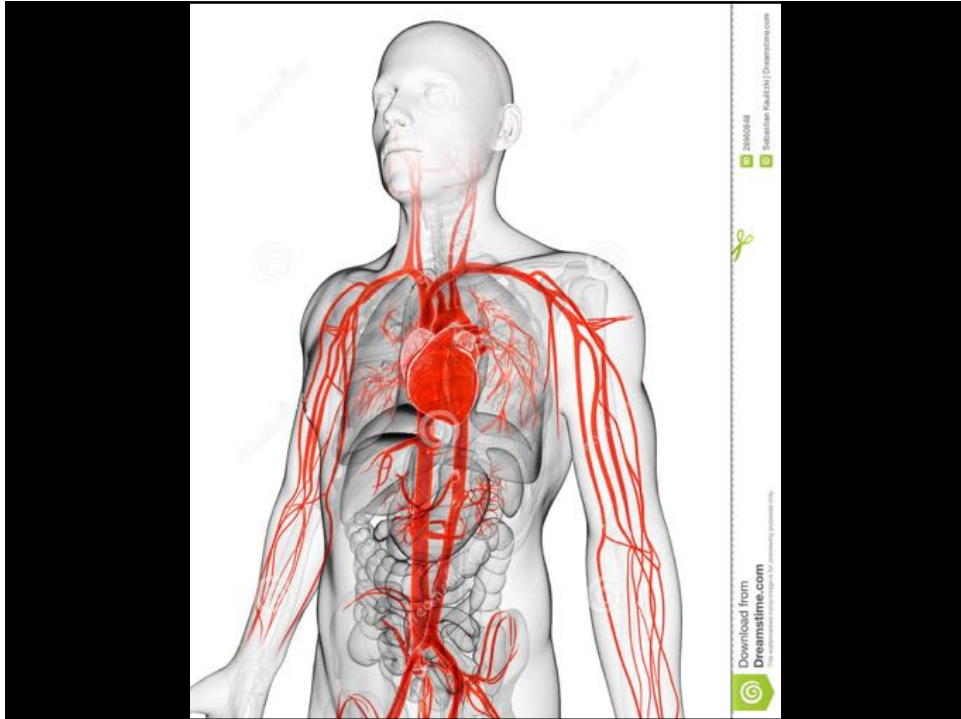
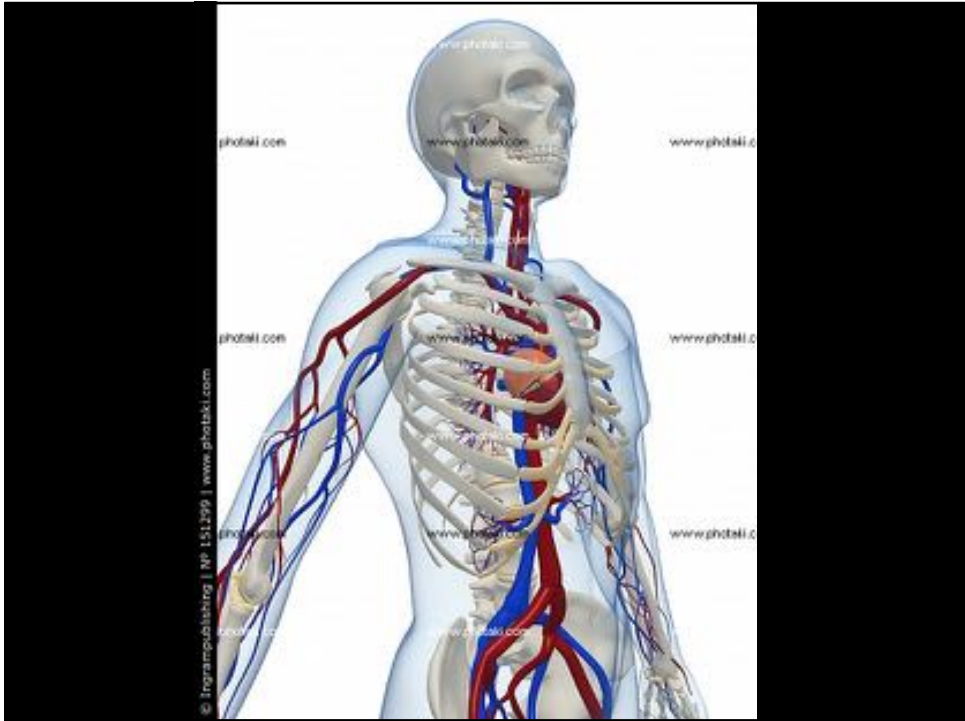
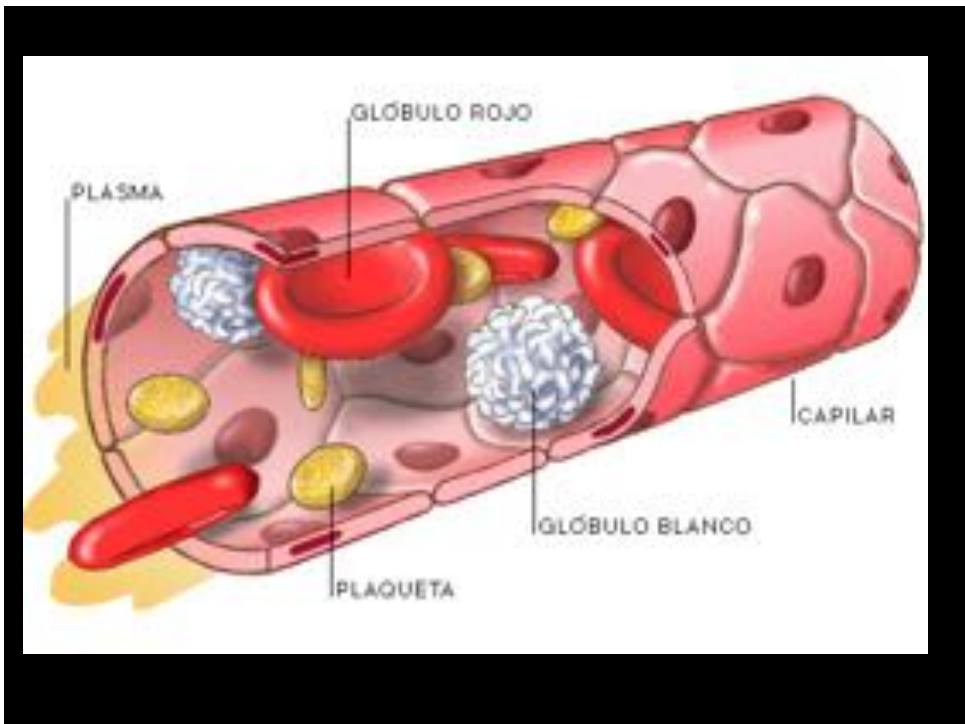
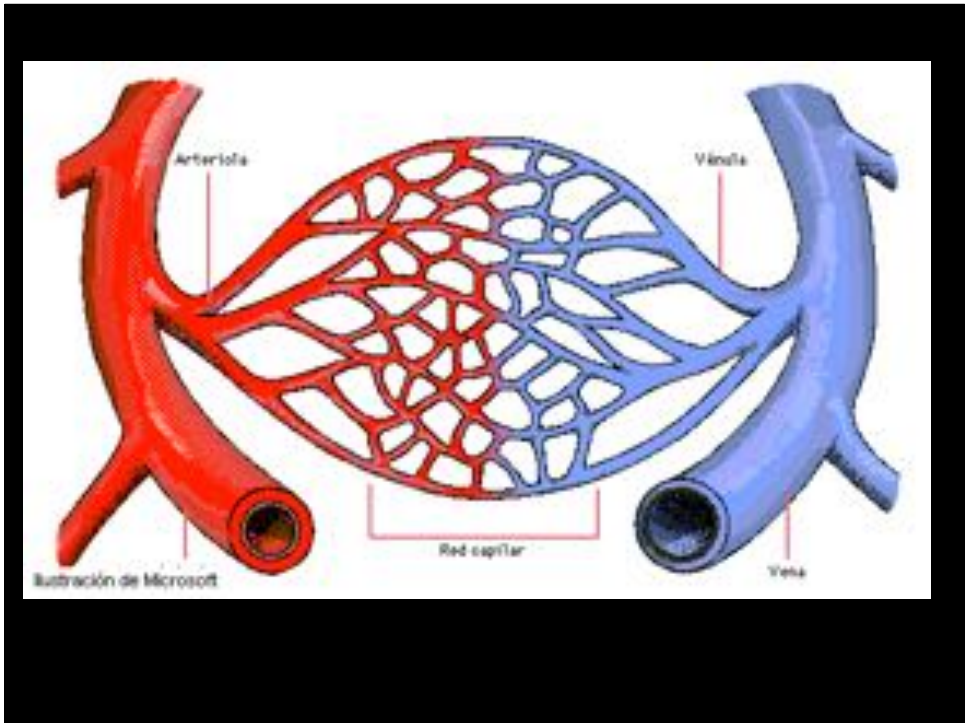


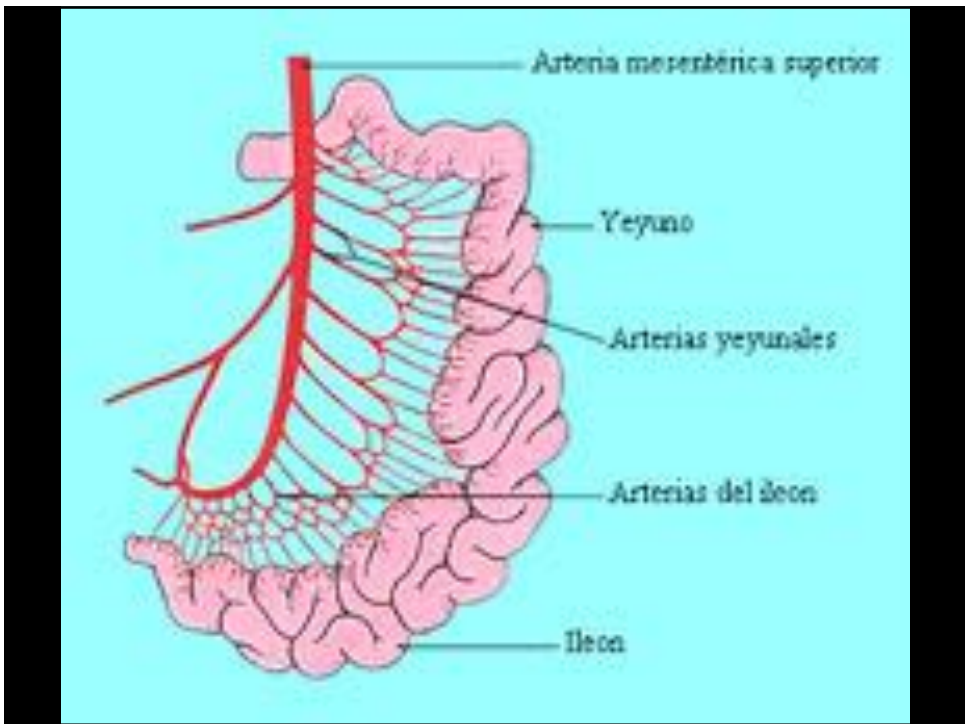


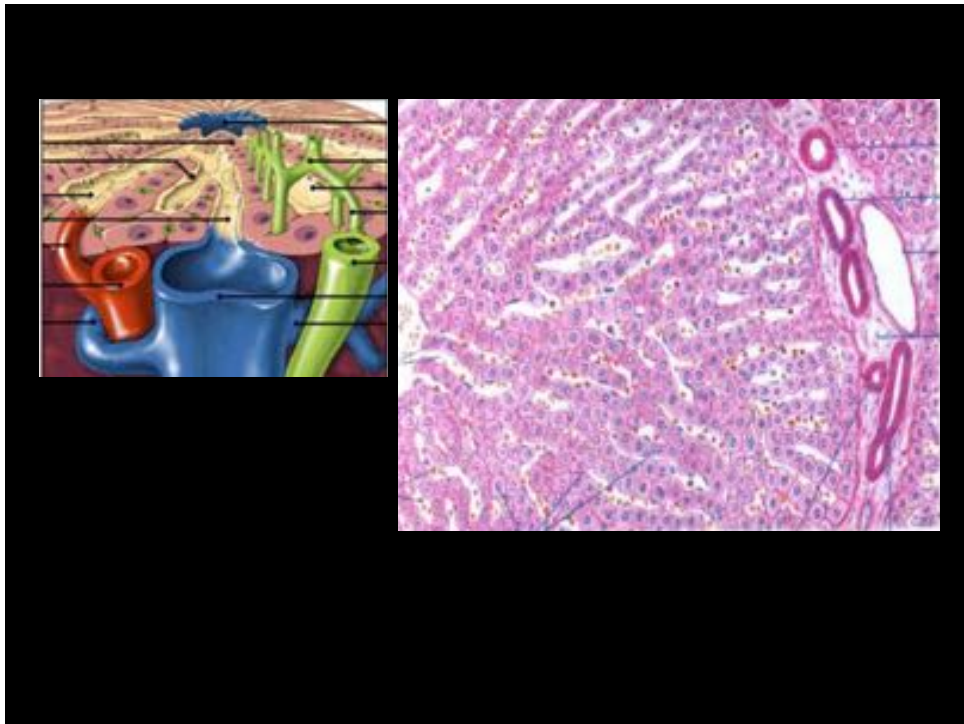
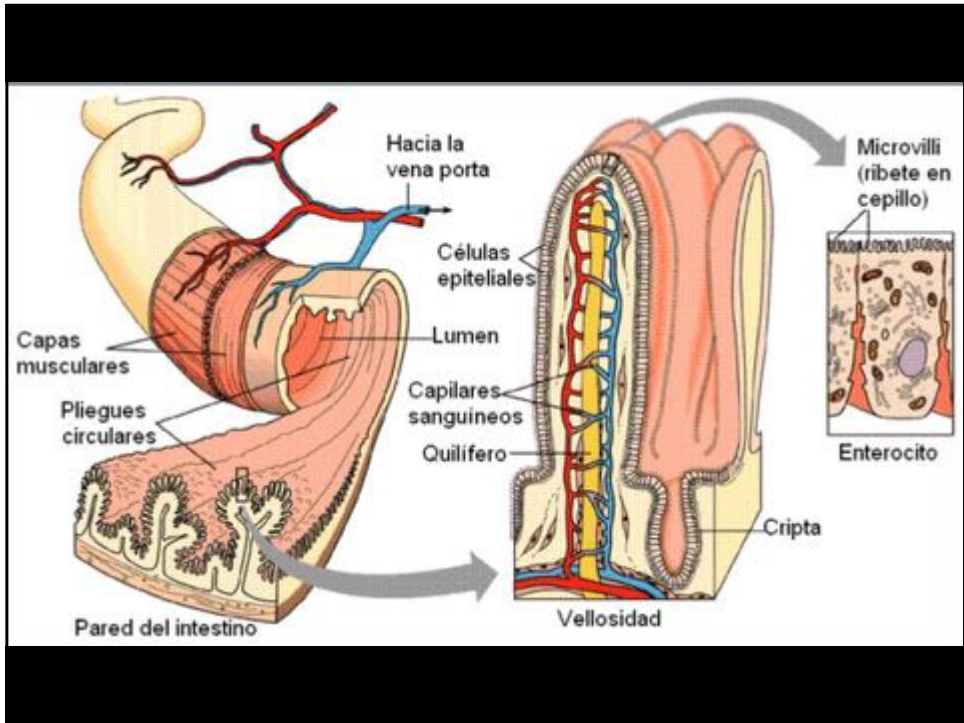
Cátedra de Patología y Diagnóstico Oral
Facultad de Odontología
Universidad de Valparaíso
Chile

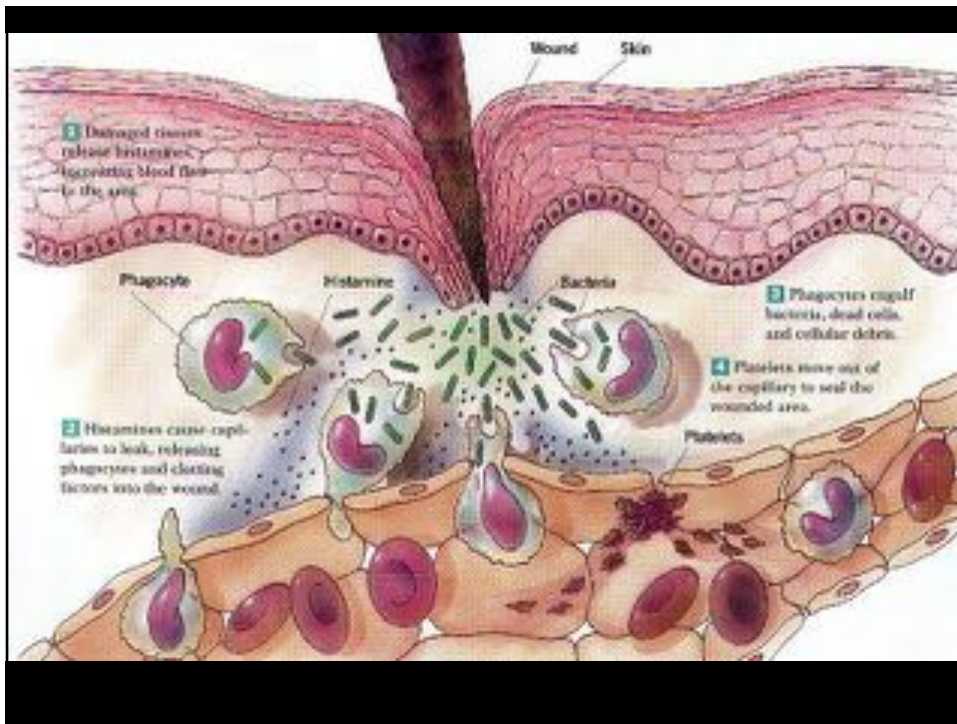
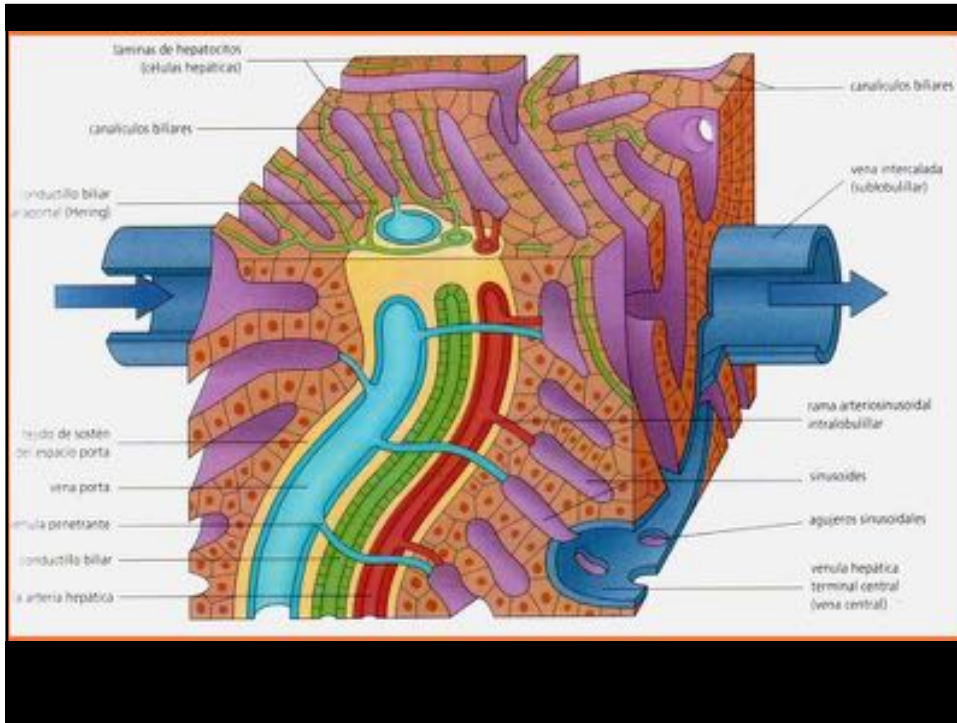


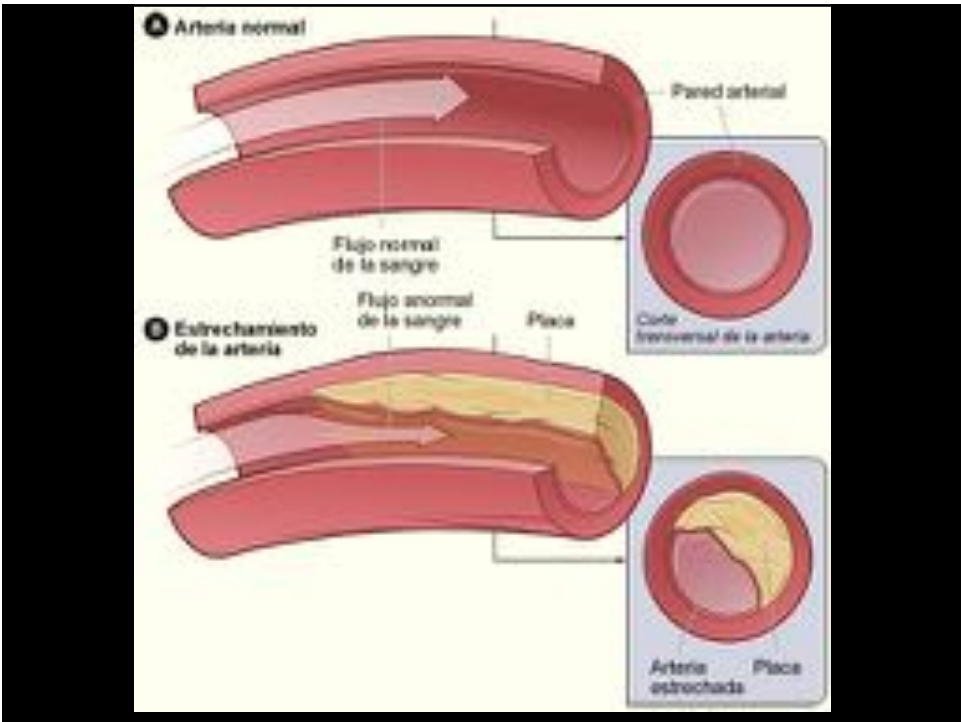
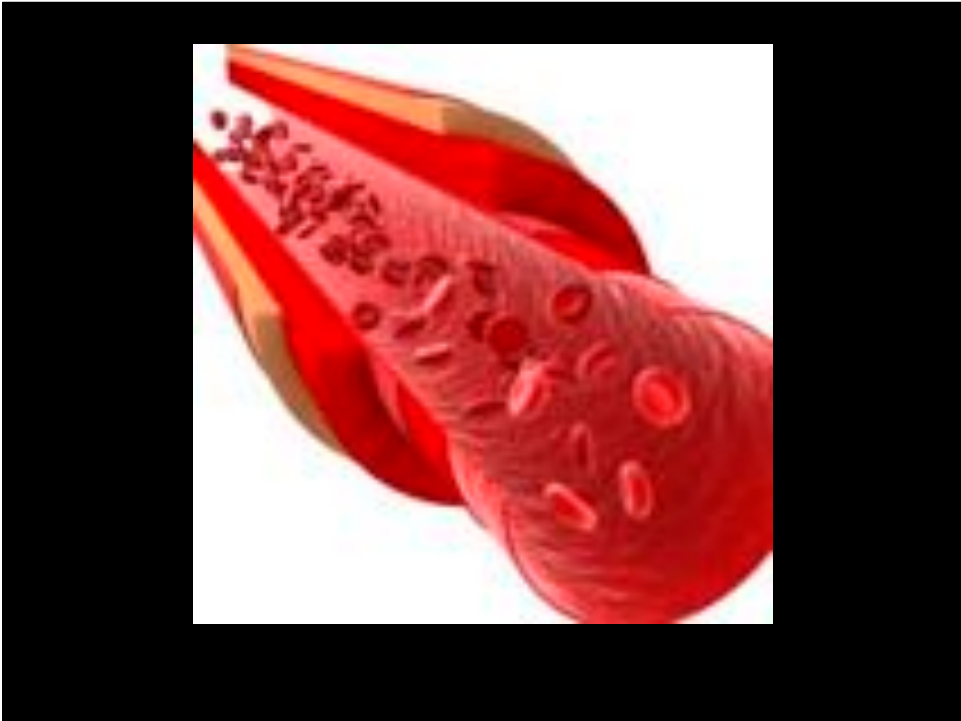




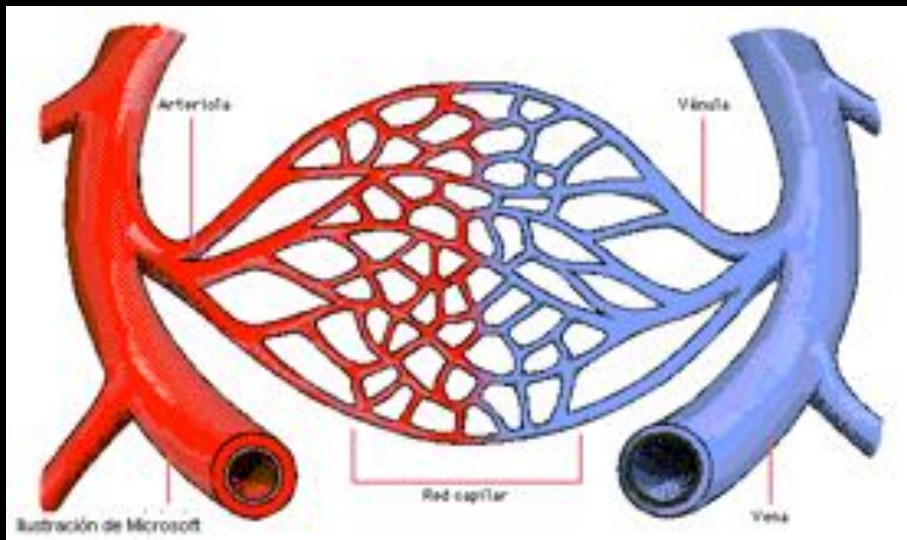


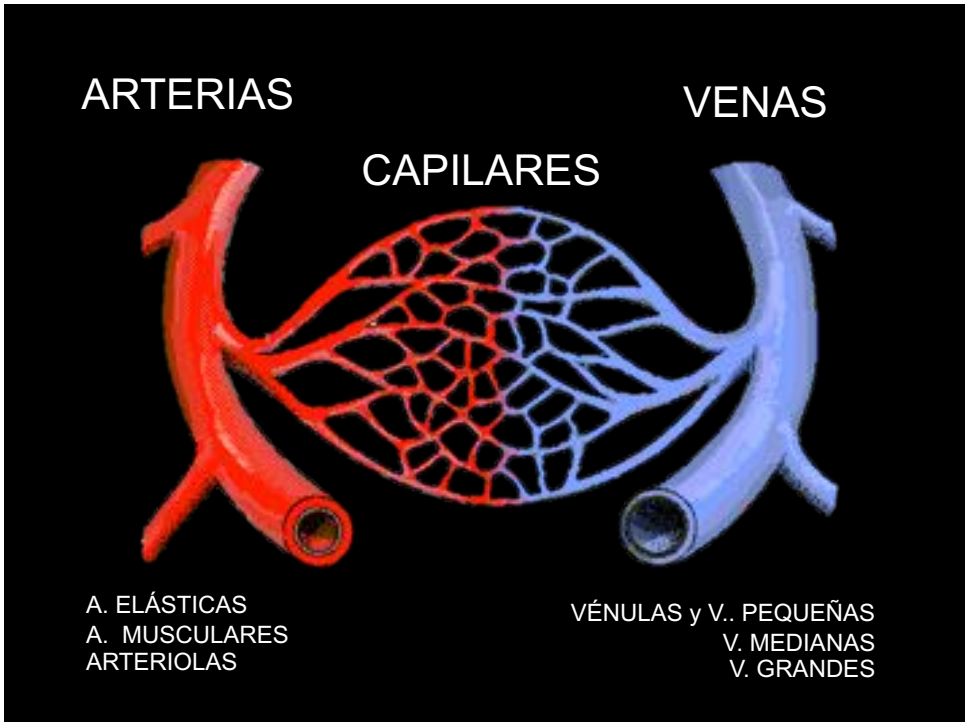
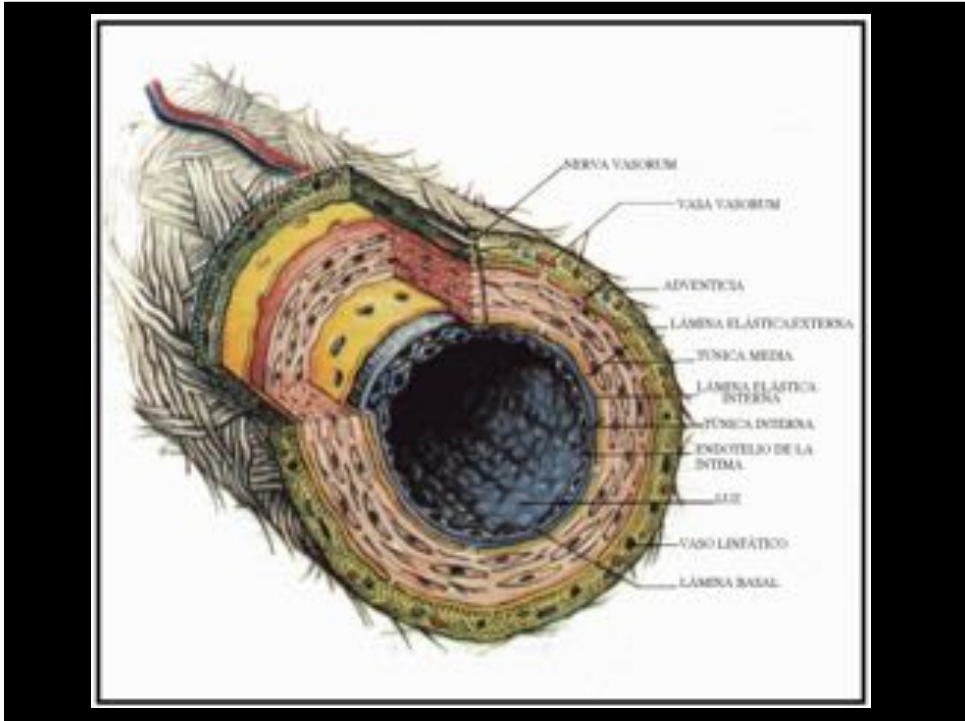


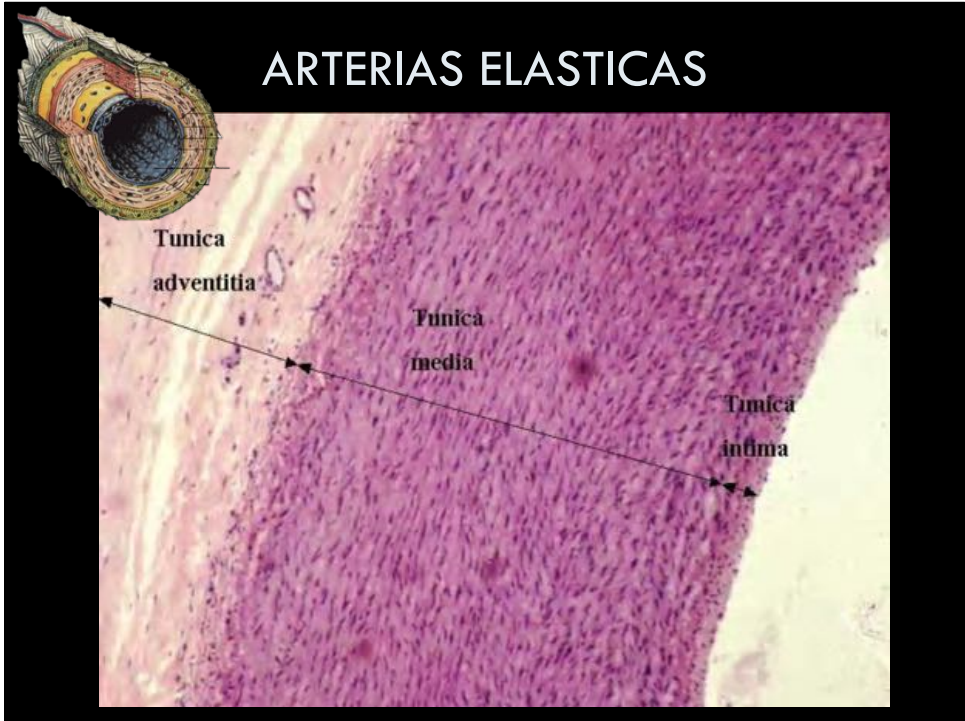


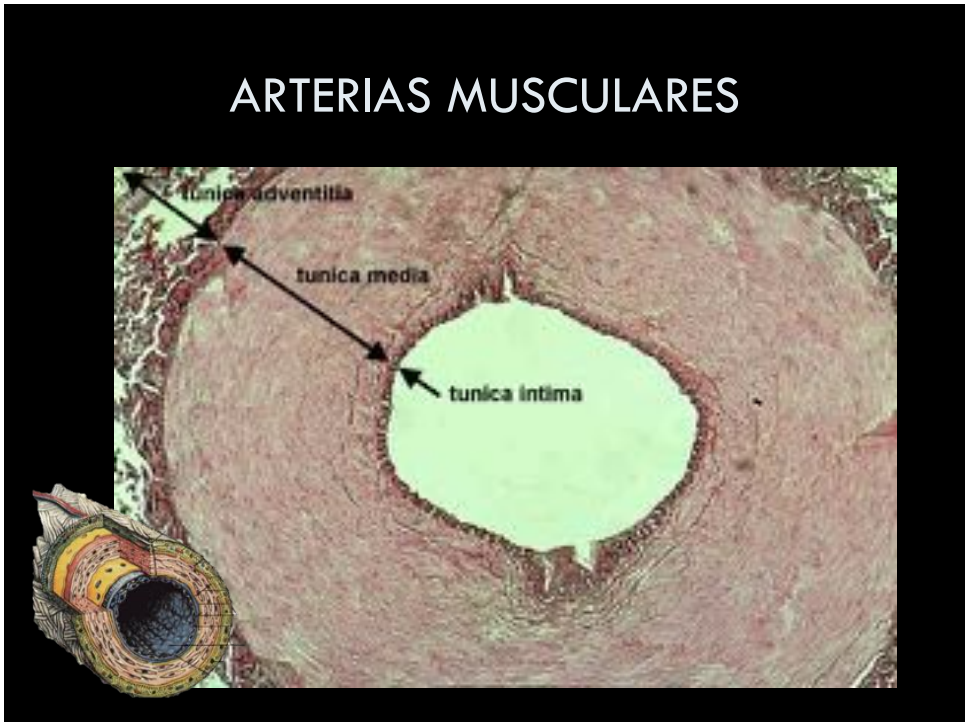
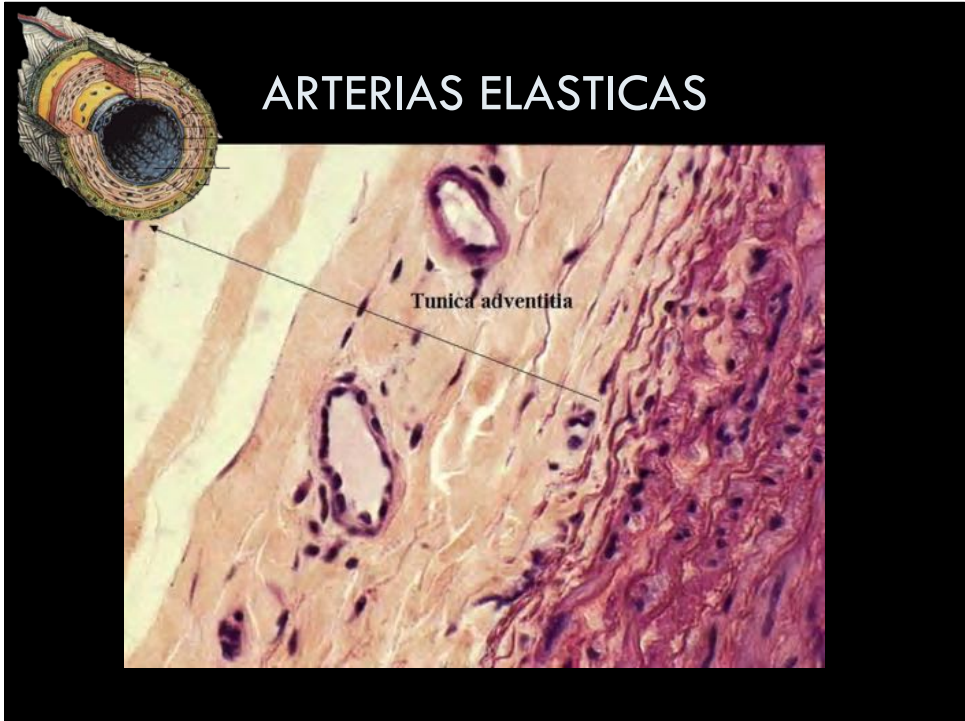


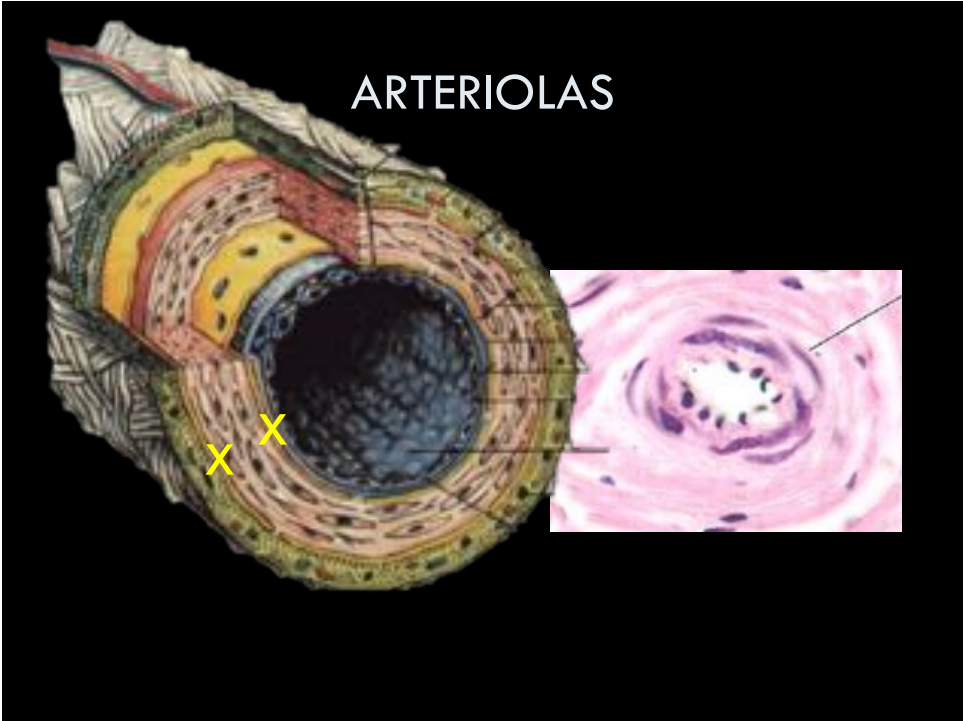
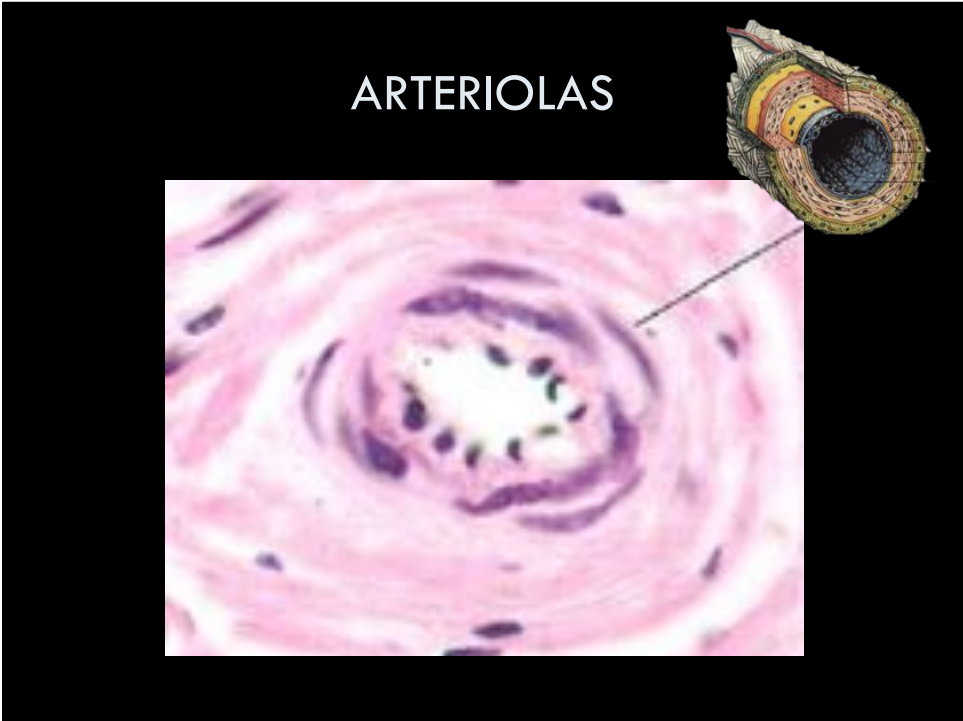
TEJIDO VASCULAR





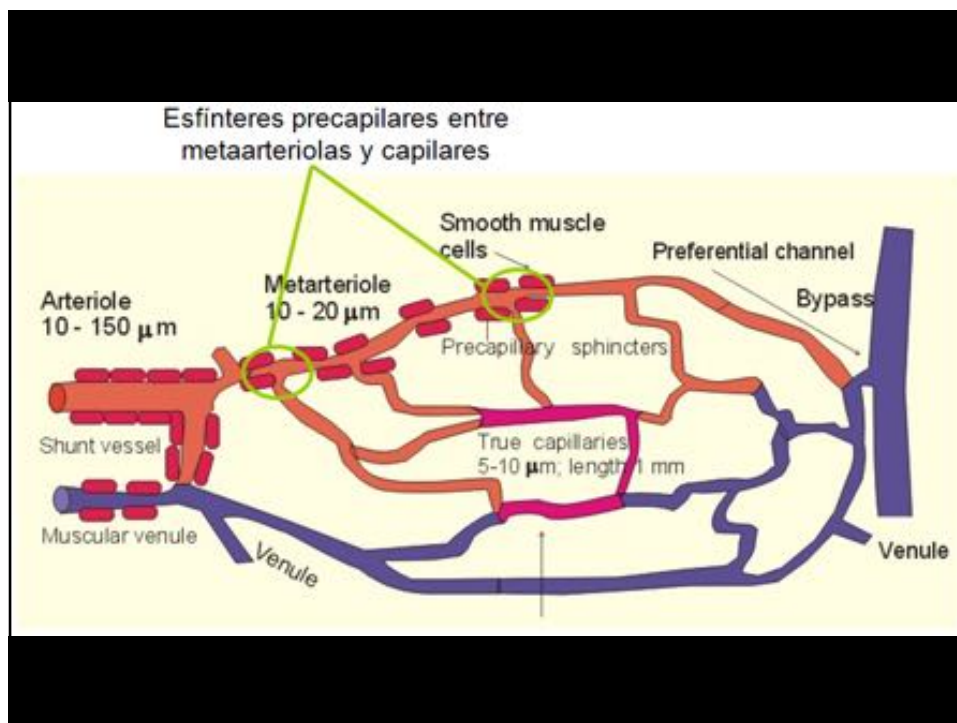






ARTERIOLAS

- Metarteriola o esfínter precapilar
 - Porción terminal de la arteriola
 - En relación con el capilar
 - Regula flujo sanguíneo (constricción)

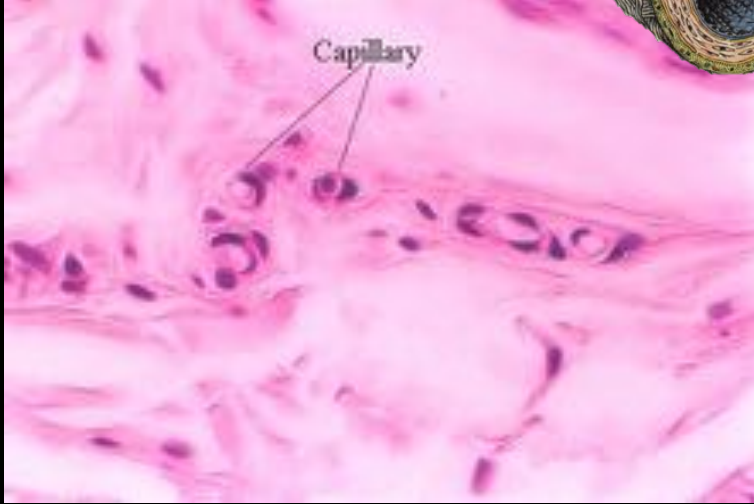
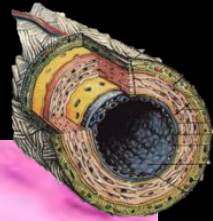


COMPARACIÓN ENTRE ARTERIAS ELASTICAS, MUSCULARES Y ARTERIOLAS

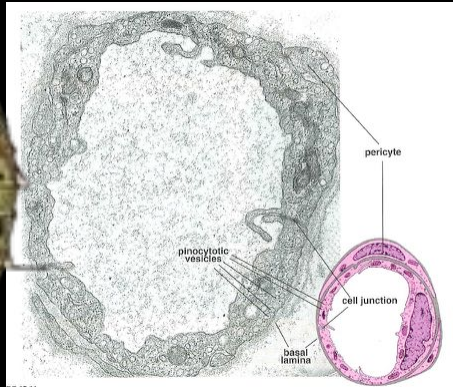
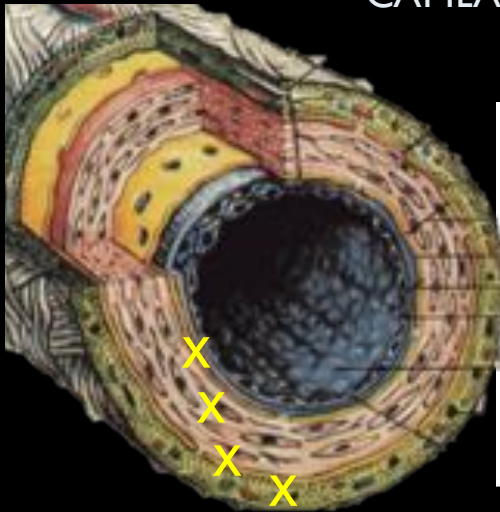
Arteries				
Vessel	Diameter	Inner Layer (Tunica Intima)	Middle Layer (Tunica Media)	Outer Layer (Tunica Adventitia)
Elastic artery	>1 cm	Endothelium Connective tissue Smooth muscle	Smooth muscle Elastic lamellae	Connective tissue Elastic fibers Thinner than tunica media
Muscular artery -Large	2-10 mm	Endothelium Connective tissue Smooth muscle Prominent internal elastic membrane	Smooth muscle Collagen fibers Relatively little elastic tissue	Connective tissue Some elastic fibers Thinner than tunica media
-Small	0.1-2 mm	Endothelium Connective tissue Smooth muscle Internal elastic membrane	Smooth muscle (8-10 cell layers) Collagen fibers	Connective tissue Some elastic fibers Thinner than tunica media
Arteriole	10-100 μ m	Endothelium Connective tissue Smooth muscle	Smooth muscle (1-2 cell layers)	Thin, ill-defined sheath of connective tissue

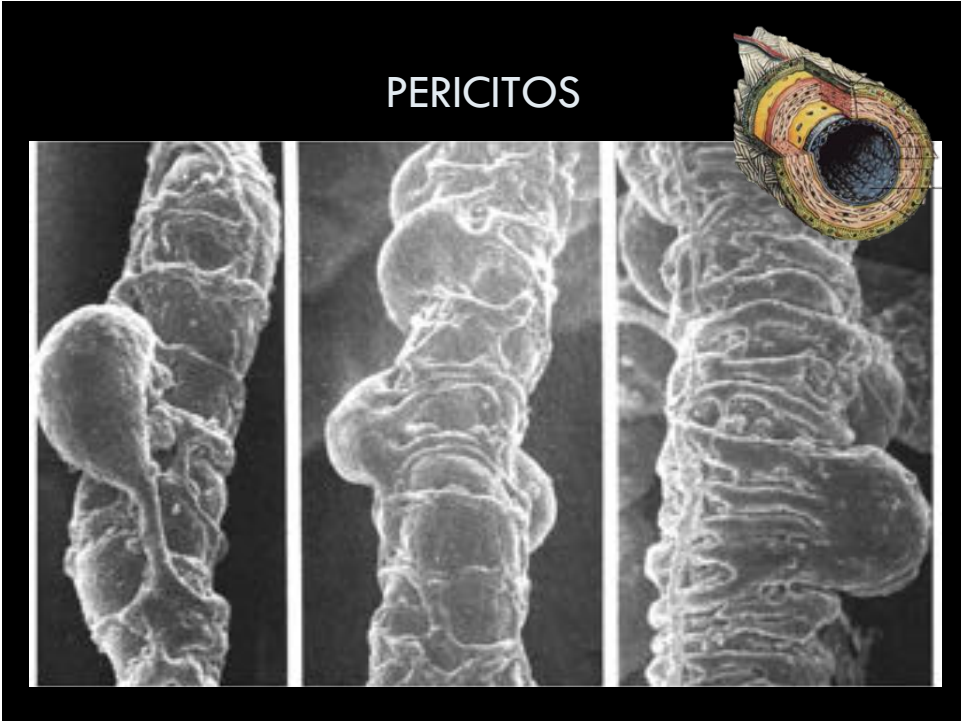
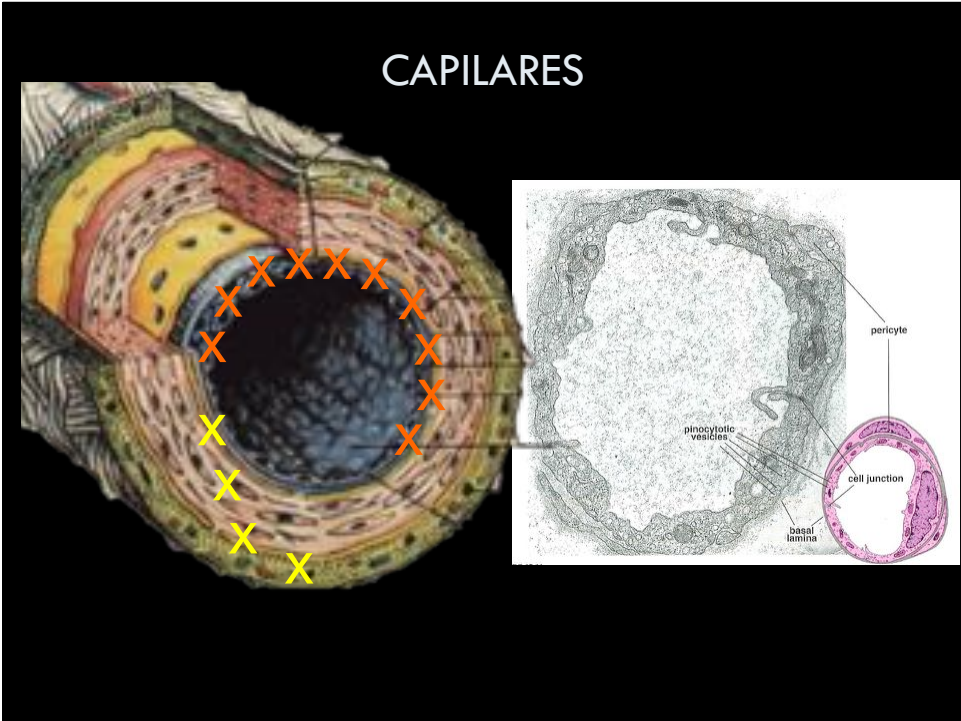
CAPILARES

CAPILARES

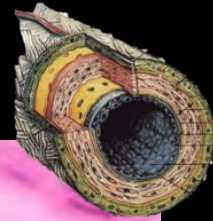


CAPILARES



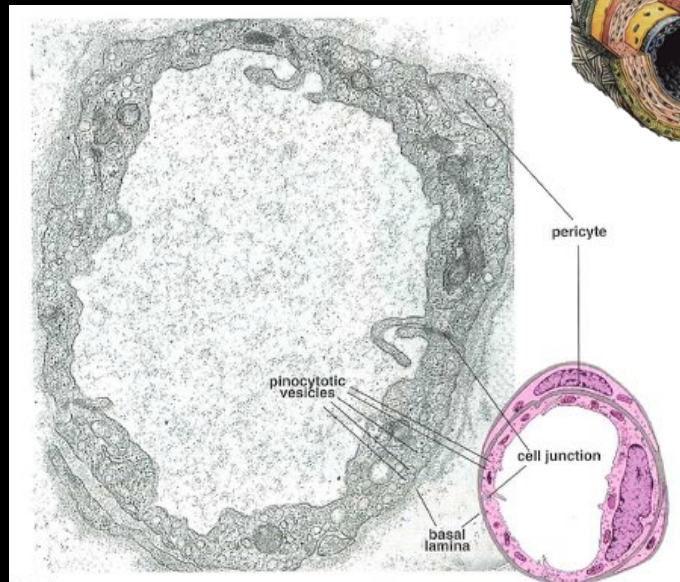
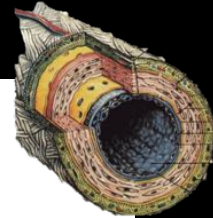


CAPILARES

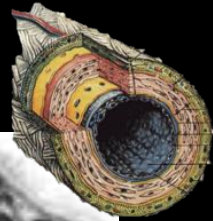


CAPILARES CONTINUOS
CAPILARES FENESTRADOS
CAPILARES SINUSOIDALES

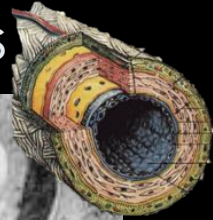
CAPILARES CONTINUOS



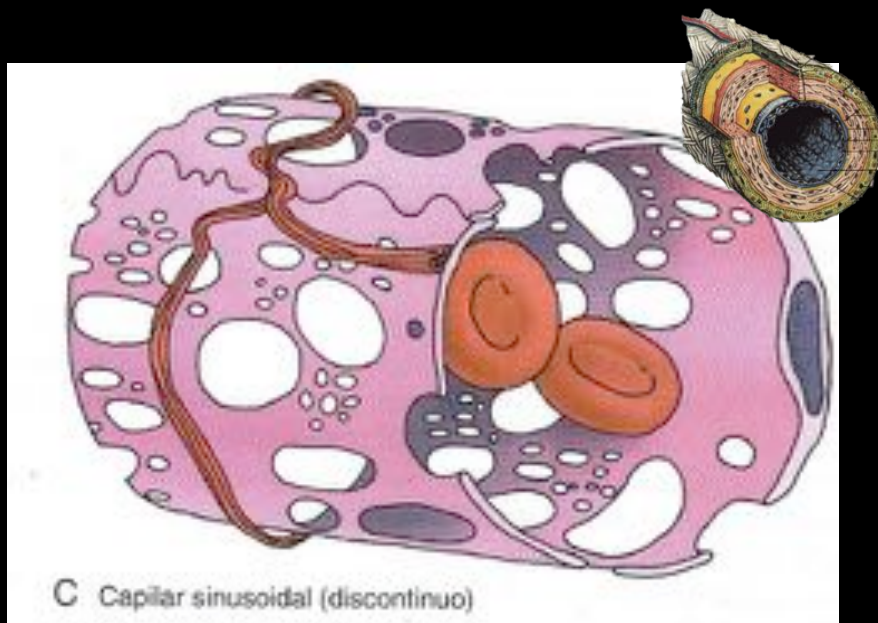
CAPILARES CONTINUOS

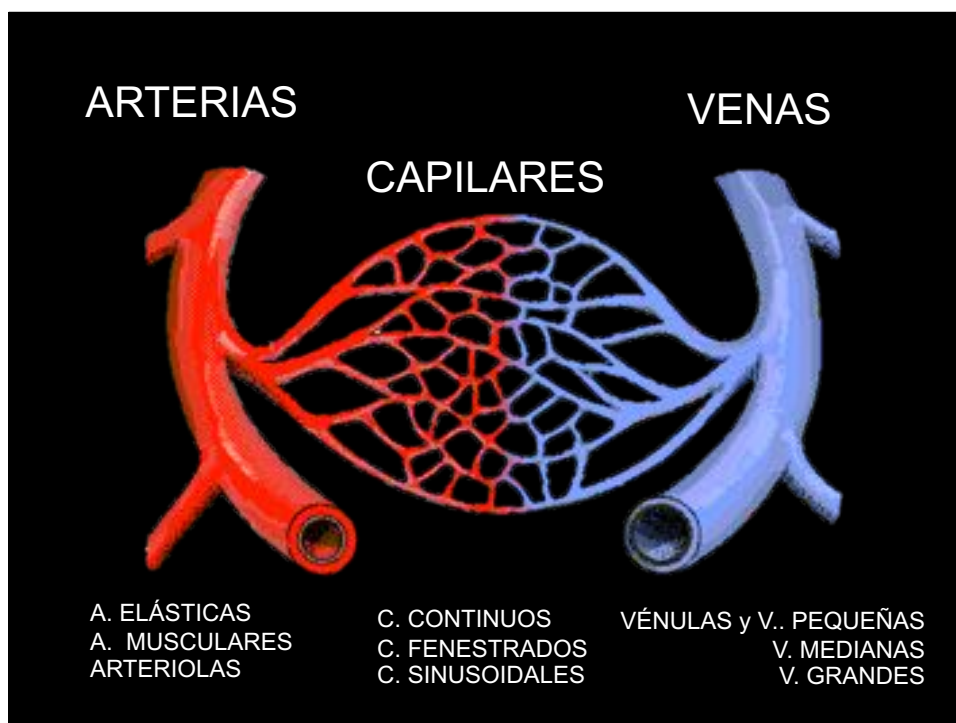


CAPILARES FENESTRADOS



CAPILARES FENESTRADOS





VENAS GENERALIDADES

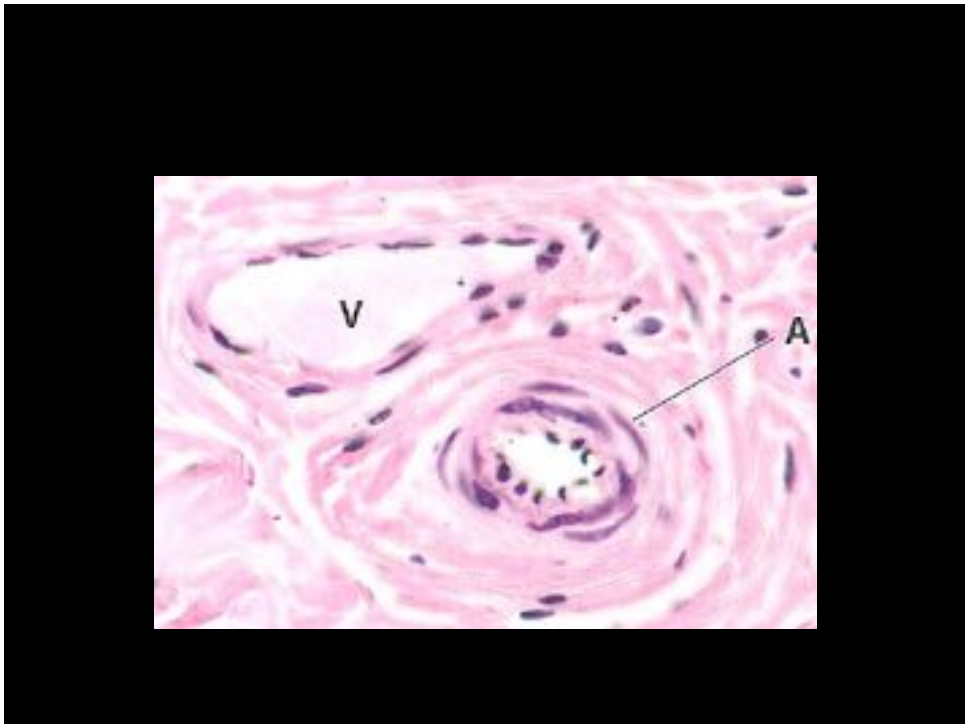
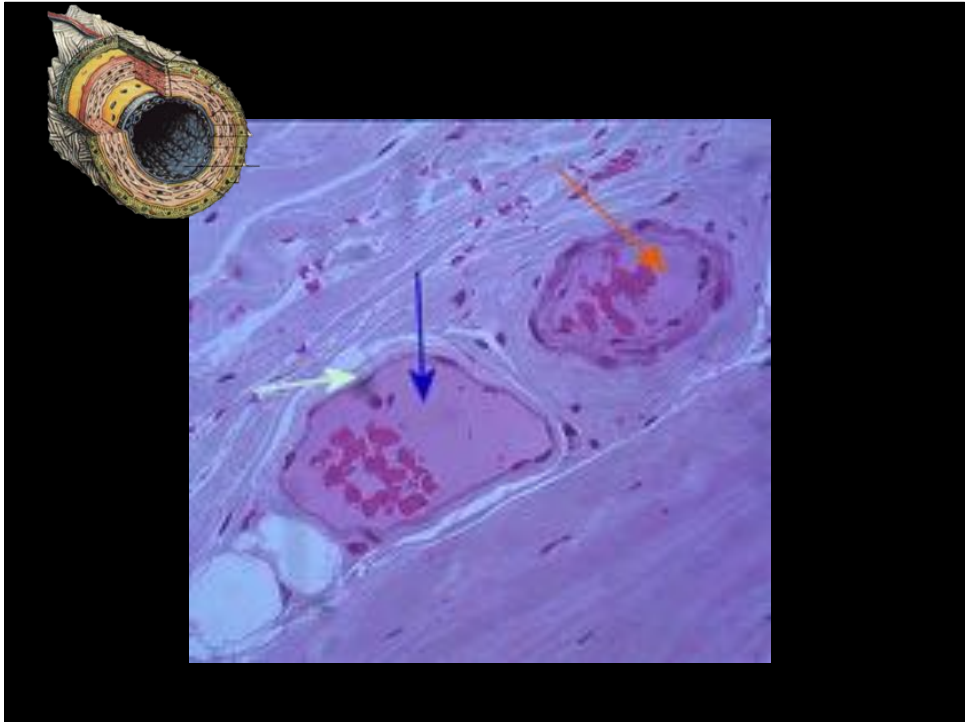
- Vasos sanguíneos aferentes
- Mayor diámetro y número que arterias
- Paredes más delgadas y con mayor cantidad de tejido conectivo
- Se clasifican según tamaño en:
 - Venas grandes: >10 mm.
 - Venas medianas (más comunes): 1 a 10 mm
 - Venas pequeñas: 0,1 a 1 mm
 - Venulas: 50 a 100 μm

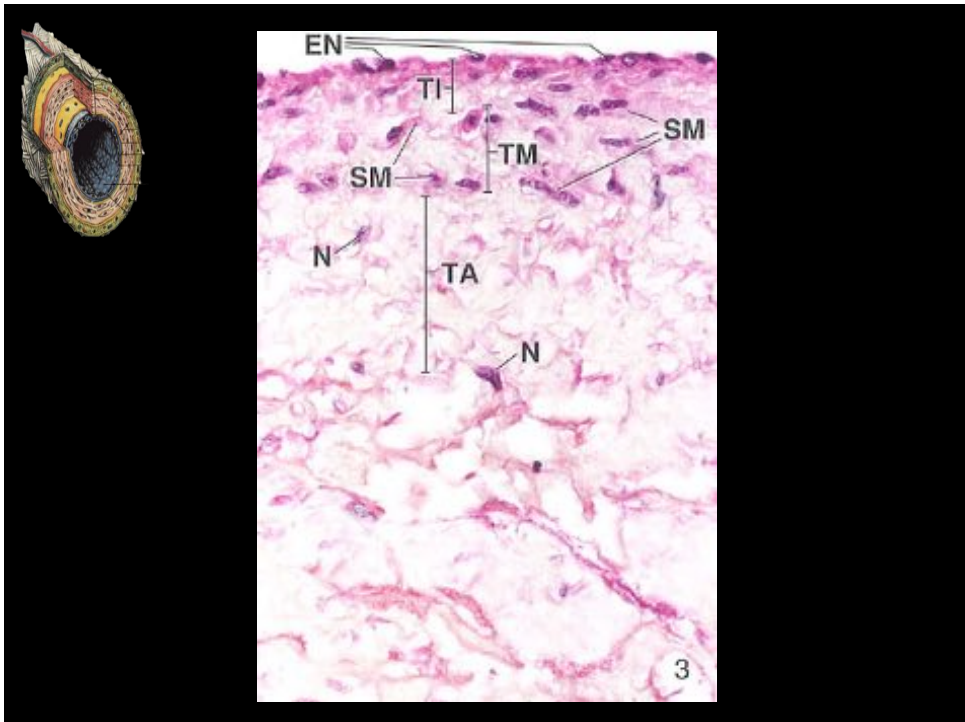
VENULAS

- Vénulas postcapilares
 - 15 a 20 μm
 - Delgada capa de endotelio, sobre capa de pericitos.
 - Contactos de oclusión laxos
 - Contacto endotelial menos denso de todo el sistema vascular

VENULAS

- Vénulas musculares
 - 50 a 100 μm
 - 1 a 2 capas de células musculares lisas rodean al endotelio
 - No presentan lamina elástica externa ni interna





VENAS MEDIANAS

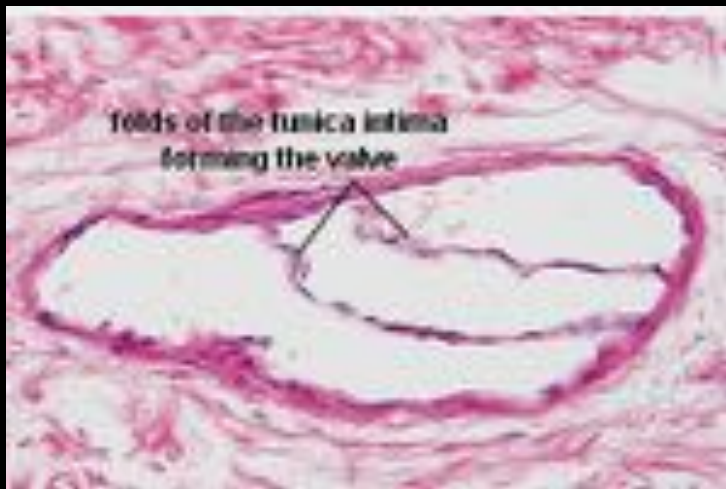
- VALVAS O VALVULAS VENOSAS
 - Dos hojas
 - Pliegues de tunica intima reforzadas con fibras colagenas y elasticas



VALVAS O VALVULAS VENOSAS



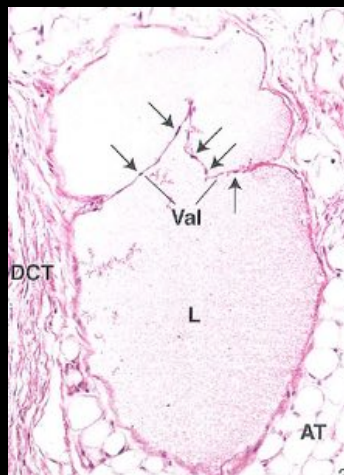
VALVAS O VALVULAS VENOSAS



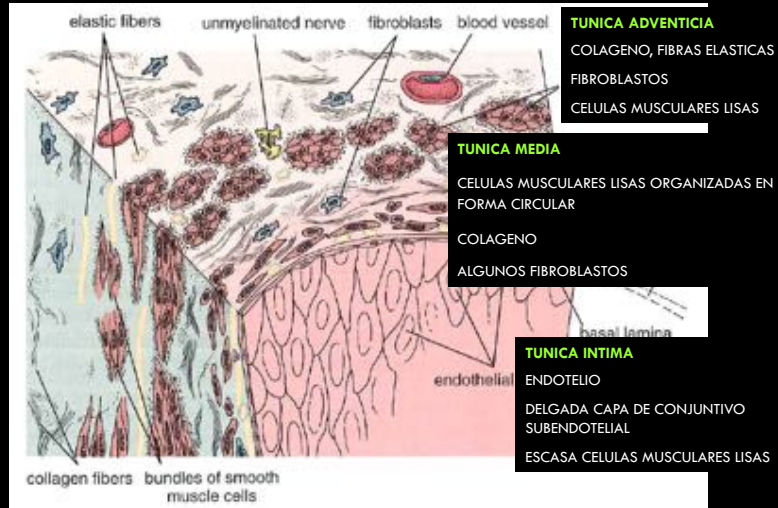
VALVAS O VALVULAS VENOSAS



VALVAS O VALVULAS VENOSAS



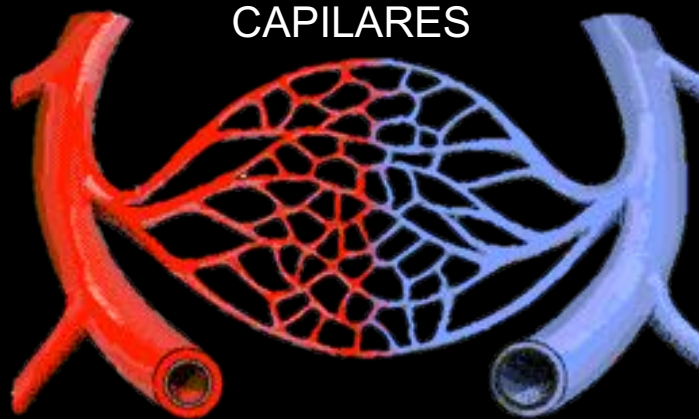
VENAS GRANDES



ARTERIAS

VENAS

CAPILARES



A. ELÁSTICAS
A. MUSCULARES
ARTERIOLAS

VÉNULAS y V. PEQUEÑAS
V. MEDIANAS
V. GRANDES



Cátedra de Patología y Diagnóstico Oral
Facultad de Odontología
Universidad de Valparaíso
Chile