



All newsletter submissions should be in by the 10th of the month

Cooper Center's Volcano Community News



NEWSLETTER #345

JUNE 2018

Dental And Healthcare Services Are Coming To The Volcano Community

The Bay Clinic Mobile Health Unit (MHU), a state-of-the-art dual service (medical and dental) vehicle, will start providing services at the Cooper Center on June 28, 2018 from 1 PM to 5 PM. You have to be a Bay Clinic, Inc. patient to receive services on the Mobile Health Unit. Primary medical services will be offered on the last Thursday of every month, 1 PM to 5 PM. Dental services will be offered on a different day and the schedule will be announced once finalized.

Medical Services will include:

Preventive Care
Treatment of Routine Illnesses
Urgent Care
Immunizations and Vaccinations
Management of Chronic Diseases
Physicals (work, school and annual)

Dental services will include:

Screenings
Comprehensive Exams
Recalls
Cleanings
Emergency Dental (Treatment/Management of pain, infections and fractures)

Services will also include QUEST eligibility and enrollment assistance. Patients will go through normal registration and are required to provide a picture ID. Valid ID's include: Driver's License, State ID, Passport, Hawaiian Kingdom ID, Senior Citizen ID, Military ID, or Student ID.

Fees are based on a Sliding Fee Schedule and applied to all patients depending on income level and family size. Based on your income, you may be eligible to receive up to an 80% discount on the cost of your medical care or only be charged a nominal fee for each visit of \$25 for primary medical and/or \$40 for dental. To qualify for a discount, you must provide proof of income in one of the following ways: paycheck stub, welfare benefit statement, food stamp benefit statement, most recent unemployment or workers compensation benefit statement, SSI/Retirement Statement, recent tax return or any document that provides your income. If you do not provide proof of your income at the time of your visit, you will be charged for the full cost of your medical care. Call 333.3600 to schedule an appointment.

Our 4th of July Parade & Celebration



Our day will start as usual with the parade from the Post Office to Cooper Center. If you want to be part of that, contact the VCA, see the Voice, in the middle of the newsletter.

The day ramps up when the parade arrives at Cooper Center and all the entrants are introduced to the awaiting crowd. At this point the entertainment starts with the summer musical cast performing songs from Oliver. Then we will have Volcano's own Boni Narito and his partner Doug as our headliners this 4th celebration. Da Boni and Doug Duo with Da Digital Menhunes have entertained us before and they deserve to the headliner spot. Another great local singer, Christy Lassiter will return.

Visitors can enjoy food booths and many items from local crafters in the Carlson Court.



We will run till approximately 1:30 pm, so come and enjoy your day at YOUR Community Center, and see what we have to offer. Now for the DO'S, DON'T'S, and RESTRICTIONS.

- * Roads close at 8:30 am, parade starts at 9:00 am
- * NO PARKING along Old Volcano Road from the Post Office to Wright Road, and also Wright Road to Kilauea.
- * NO PARKING AT COOPER CENTER (reserved for volunteers and food vendors)

I'm taking reservations for handicapped parking until June 20th, there will be no last minute handicapped stalls available. You'll have to be parked no later than 8:30 am. Contact Linda to make a reservation, first come first serve.

- * SKATEBOARDERS...RAMPS CLOSED July 3rd all day, and the 4th till approximately 3:00 pm

We are currently taking applications for crafters and food vendors. I will have both applications available on our web page www.thecoopercenter.org, click on the "Events" link, scan down to the 4th of July, and download applications and/or maps.

Complete list of entertainment and food vendors will be in the July newsletter. Come enjoy your non fireworks 4th. When we finish, you still have plenty of time to go elsewhere to plan fireworks and family fun.

Linda Ugalde 808-936-9705, kilaueatutu@gmail.com

Volcano Newsletter

NEWS Submissions

All e-mail submissions for ads, articles and Unclassifieds should go to Linda Ugalde at 936-9705 kilaueatutu@gmail Calls to my # between 8a-5pm only; it's treated as a business phone Be sure to include your name! Please include a headline. Deadline - 10th of each month

For any scheduling, contact

Linda Ugalde 936-9705

8am to 5pm

or email to kilaueatutu@gmail.com

Volcano Community News is not responsible for errors in submitted articles. The views expressed in the submissions are those of the authors. ALL submissions must be by digital copy, with name and contact information provided.

Advertising

Pre-Paid rectangular 1½" high x 2½" wide press ready ads cost \$30 per issue or \$162 for 6 months, and 2½" square ads cost \$45 per issue, or \$243 for 6 months. Back page ads are \$55. and \$75. with a 10% discount for 6 months. If ads are stopped & restarted, ad graphics must be resent. Ads are placed as submitted, we cannot make any changes, or "fix" the appearance of the ads. Must be submitted in exact size as specified above. If you need help to prepared or fix the minimum resolution of 300 dpi contact a graphic artist of your choosing. Submit as a PDF file. Ad payments must be made in a timely manner.

All ads are due by the 10th, and payment needs to be RECEIVED by the 10th. When you place an ad, make sure we have your snail mail and email address for billing. If you don't pull your ad, we will run, and you will be liable for payment.

Volcano Voice (pg. 6 & 7) is produced with full editorial license by Volcano Community Association not Cooper Center Council.

Checks for advertising should be made payable to, addressed to, and received by the 15th of the month by:

Cooper Center Council

Phone: (808) 967-7800

Volcano Community News

P.O. Box 1000, Volcano, HI 96785

on line: www.thecoopercenter.org

Edited by Linda Ugalde

Layout/Design by D.E. O'Reilly

Printed on recycled paper with vegetable based ink



Un-Classifieds

Competitive opportunity for Volcano Vacation rentals: the premier website VolcanoVillage-Hawaii.com, page 1 on all search engines, is for sale! Serious inquires only. Contact VillageHawaii@aol.com for information.

Mindfulness Meditation for Everyone: Sunday mornings, 10 AM - 11:30 AM, Great Room, Nialulani Campus of the Volcano Art Center. Beginner friendly! No charge; donations will be gladly accepted. Taught by Mary Grace Orr

4/4 Student Cello lightly used with bow, instructional book with CD, soft case. \$250 938-0516

VOLCANO CARPENTRY & MASONRY

REMODELS
STEEL WORK,
MACHINE WORK
SLABS, SIDEWALKS,
FOOTINGS, RETAINING WALLS,
NEW CONSTRUCTION

FRAMING
FENCES AND DECKS
INTERIOR, & EXTERIOR
OVER 20 YRS. IN CUSTOM
HOMES AND REMODELING
AND MUCH MORE

CONTACT: BRANDON CASH
CAINECASH637@GMAIL.COM

(808)476-7896

We Will Beat ANY Fireplace or Stove Price in Hawaii*

Hawaii's Only Full-Service Fireplace Store

Hawaii Fireplaces

64-1035 Mamelahoa Highway, Unit E
Kamuela - U'ilani Plaza next to HPM
contact@hawaiiireplaces.com
www.hawaiiireplaces.com

887-0022 Division of Hawaii Air Conditioning

Installation • Restoration • Dehumidification • Service • Chimney Sweep

* Special offers apply to select qualifying equipment. Call for complete details.

VOLCANO TREE SERVICE

certified arborist/tree climber
specializing in difficult take-downs,
tree pruning and risk assessment

Call 365-4003 for free estimate!

Rainfall Measured in Inches for the Month of April 2018

Volcano Village 24.39

Data collected by Jim Bush

Royal Hawaiian Estates 28.55

Data collected by Tom Pico

Mauna Loa Estates 27.10

Data collected by JJ Jasinski

Fern Forest 30.72

Data collected by Drew Kapp

Volcano Golf Course 16.55

Data collected by Amos Meyers

Volcano's Handy Guy

Phillip specializes
in the maintenance of water systems.
He sells water pumps and Ultraviolet water
purifiers. He worked as a Sears appliance repairman
and repairs washers, dryers, dishwashers, garbage
disposals, etc. He has been doing home repairs
in Volcano since 1992.
Call him at 967-7100

BODYWISE Body Tools

Massage Therapy in Volcano

Pain Relief

Call for appointment

Rebecca Gonzalez, RN, LMT

Office: 808-333-5913 Cell: 808-640-7656
Over 20 years experience MAT#2224

Kilauea Nails

Manicures • Pedicures • Acrylics • Gelish
Shellac • Facial Waxing • Ear Piercing
Gift Certificates

By Appointment Only

808-937-4833



VOLCANO SENIORS JUNE 2018 EVENTS

Seniors meet at Cooper Center
on Thursdays, 9:30 am - 12:30 pm

7..... Games

14..... Business meeting, warm-ups,
games

21..... Warm-ups, games

28..... Warm-ups, games

Mahalo to the Office of Voter Registration for their outstanding presentation. Dawn Long, Myra Ross and Frnak Yoshida each presented the different aspects of the voting process. Some of our seniors signed up to vote or vote by permanent absentee ballot. The office is looking for volunteers to help at voting sites. For further info call the County Clerk, Elections Division at 808-961-8277, located at 25 Aupuni St, Suite 1502, Hilo, HI 96720.

June 18 thru June 28 at Kea'au High School free medical care is available to everyone. TROPIC CARE 2018 is thru the Army Reserve Innovative Readiness Training in cooperation with Hawaii State Dept. of Health & County of Hawaii. Free care includes medical health screening, dental and optometry including prescription eye glasses, and more. For ages 3-18 there is a free breakfast: 7:45-8:15am and lunch: 12-12:30pm Monday-Friday. Food trucks available on site for food purchase. Our seniors are encouraged to take advantage of this free medical care.

Tropic Care is first come, first serve. Be prepared for a long wait. Bring water, snacks, current glasses and current medications. For more info contact Public Health Nurse at 808-974-6035.

We would like to invite local seniors 55+ to come join us. For more info, call 985-9115.

For transportation to our weekly meetings call Karen Kotaki (County Coordinated Services for seniors) at 961-8777. She can also provide information about: Info & Assistance Services, Outreach Services, Transportation/Escort, In-home (chore, etc.), plus other services (ie Senior ID cards, etc.).

Bev Shiflett, President

From the Fire House



As I write this article for June, there are disastrous events taking place on the east side. We have the lava vents and incursions in lower Puna. There have been earthquakes from Volcano to the ocean, and it is still raining. There is some concern, with all the seismic activity, Mauna Loa could erupt. I have lived here for ten years, I know a new comer, and I have always heard that Mauna Loa and Hualailai are overdue for an eruption.

So, what can we do? One option is to do nothing. Another option is to run naked around your yard screaming doom and gloom. The best option is to prepare. First, prepare yourself mentally. Develop a plan, write it down. Talk it over with your family. Gather your important documents in a water proof container. Have your go bags ready for your kids, pets, and you. You should have been stock piling food and essential items for your family. This should include, but not limited to: nonperishable food items, can opener, strike anywhere matches, flash light and batteries, head lamp and batteries, any meds, eye glasses, clothes, toiletries, and sleeping gear. You should also pack games for the kids, their favorite toy, and favorite clothes. This will help reduce their anxiety.

When a disaster happens, the key is not to panic. You need to remain as calm as you can. Your reaction and attitude will affect those around you. If you are panicked, others will panic. If you are calm, others will be calm. There are four emotional stages of a survivor in a disaster. (1) impact phase, no panicking, may show no emotion. (2) inventory phase, assess damage and try to find others. (3) rescue phase, willing to take direction from rescuers. (4) recovery phase, survivors pull together against rescuers, express anger, or blame.

I have listed these phases to give you understanding of how people may react in a disaster. The hope is by knowing these phases you will be better equipped to deal with family and friends in a disaster. The events happening now have caused me to reflect on how vulnerable we are and the need to continue to prepare our community for any disaster. Please, be prepared, be safe.

Paul Lakin Captain, 19A

The 2017-2018 Rotary Year Will Soon Come To A Close

The public is invited to our change of leadership event on June 30 at 5:30 pm at the KMC Koa Room. We will be hosting a spaghetti dinner with salad and desserts for a \$10 donation. Please contact a Rotary member if you are interested in attending.

At this dinner, we will install our new President, Bill Hamilton, and his Board of Directors. We will also recognize 2 high school seniors who are this year, A&S recipients of the Rotary scholarships. The \$5,000 recipient is Malakai Lurker of Keeau High School, and our \$2,000 recipient is Luis Guerrero-Garcia of Pahoa High School, two very deserving young men.

We are in the process of establishing our calendar of events for the new year and welcome any suggestions you might have for projects that will help the community as a whole. Please feel free to pass suggestions on to any club officer or member. The board will review all suggestions and decide which ones are within our financial and physical capabilities.

You need not be a Rotarian to assist in our community projects, so please feel free to contact us if you are willing to assist.

We will share our calendar with you in future editions of the newsletter.

Rotary Club of Volcano, Service Above Self

Allan Kroll

Realtor & Notary Public

808-756-3010

Savio Realty, Ltd.

Over 1,000 Properties Sold...

Volcano resident since 1982

allank3@gmail.com

hawaiiproperty.tv - website

For All Volcano & Big Island Listings
RB-16443

TipToeLandscaping.com



854-9884
Reliable
Affordable
Meticulous

VILLAGE PROPANE
MT VIEW
DELIVERIES AVAILABLE

18-1340 VOLCANO RD
MT VIEW VILLAGE
P.O. Box 711566
MT VIEW, HI 96771
(808) 640-6914

ROLAND G. IGNACIO
OWNER
MON - FRI 10:00 - 6:00
SAT - SUN 9:00 - 5:00
IF DOOR OPEN WE'RE OPEN

Need help with your Mac?
iPhone? iPad? WiFi? Printer?
Give Mark a call!

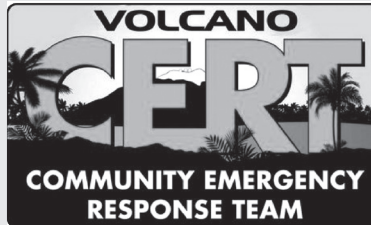
Friendly, knowledgeable,
& makes house calls in Volcano.
20+ years Apple experience.

206-255-4674
hilifemedia.buzz@gmail.com



COOPER CENTER
THRIFT
& BOOK
STORE

EVERY
3RD SUNDAY
EVERYTHING
IS HALF PRICE
CHECK IT OUT!



Hoarding and Fire: Reducing the Risk

Do you have a person in your life who may be a hoarder?

Hoarding is a condition where a person has persistent difficulty discarding personal possessions. The large amount of possessions fill the home and prevent the normal use of the space. Living space becomes cluttered. It may be unusable. Hoarding brings distress and emotional health concerns.

Why hoarding increases fire risks

- Cooking is unsafe if flammable items are close to the stove or oven.
- Heating units may be too close to things that can burn. They might also be placed on unstable surfaces. If a heater tips over into a pile, it can cause a fire.
- Electrical wiring may be old or worn from the weight of piles.
- Pests could chew on wires.
- Damaged wires can start fires.
- Open flames from smoking materials or candles in a home with excess clutter are very dangerous.
- Blocked pathways and exits may hinder escape from a fire.

How hoarding impacts first responders

- Hoarding puts first responders in harm's way.
- Firefighters cannot move swiftly through a home filled with clutter.
- Responders can be trapped in a home when exits are blocked.
- They can be injured by objects falling from piles.
- The weight of the stored items, especially if water is added to put out a fire, can lead to building collapse.
- Fighting fires is very risky in a hoarding home. It is hard to enter the home to provide medical care.
- The clutter impedes the search and rescue of people and pets.

Science Camps of America Takes Hawaii Teens to the Outdoor Classroom

Science Camps of America is back on the Big Island for teens entering grades 9 through 12. The two ten-day overnight camp sessions take learning outdoors & offer hands-on experiences to local teens aged 13-17.

"The idea is to get teens outside and into the field to explore science," said Michael Richards, Science Camps of America founder and Executive Director. "Campers see rocks where they were formed, observe sea turtles in their natural environment, and star-gaze from one of the best places on Earth. Camp is hands-on, interactive, and fun. Campers get to meet and work with real scientists in the field and experience a little bit of what it is like to be a scientist."

This year, students will see a new face at the camps. Denisse Aranda, a former engineer with NASA, joins the Science Camps of America team as Program Director to help expand campers' passion and excitement for science.

Land and Sea Camp will be held June 29 to July 8 and offer the chance to experience geology, oceanography, zoology and more. Campers will explore Hawai'i Island's unique flora and fauna and learn how events in the natural world are connected.

At Air and Space Camp, held July 9 to 18, teens explore topics including the atmosphere, climate change, astronomy and space exploration. Campers will gain a better understanding of rocketry, the challenges of spaceflight, climate change and alternative energy.

Science Camp is based at the Pahala Plantation Cottages in Ka'u. Campers will visit Hawaii Volcanoes National Park, 'Imiloa Astronomy Center, Mauna Kea Visitor Center, Mauna Loa Climate Observatory, Punalu'u Black Sand Beach and many other destinations.

To learn more about Science Camps of America and possible financial aid, visit www.SciCamp.org.



Shake It Out – The Race Is On The Way

It's time to get out your running shoes and tie up those laces, as the 9th Annual Volcano Rain Forest Runs - Half Marathon, 10K and 5K races . They will be here before you know it. Saturday, August 18, 2018. That's 8-18-18 – lucky number

Cooper Center will be the happening place for the Packet Pick Up and late Registration Friday August 17, and Race Day Start/Finish for all events. Free Keiki Runs for kids 1-7 years old.

Finish for the Big Island Half Marathon Triple Crown Series. If you ran the Hilo Half in March and plan to run the Kona Half in June -ending with the Volcano Half – sign up for the Triple Crown Series. The final ceremony will be at the Volcano Rain Forest Runs.

You can register online for all of these events at: www.volcanorainforestruns.com and clicking on register here or copy out a registration form and mail it in.

Awards will be given for the top: 1st, 2nd, and 3rd place Male and Female winners of each race and 1st and 2nd place M/F winners in 10 year age divisions for all 3 races

The Rotary Club of Volcano will be serving up a delicious BBQ lunch on race day as well as health and fitness booths, with Taiko Drums to welcome you in at the Finish Line and so much more. Make it a family affair and bring everyone for a fun filled day.

We would like to thank the community for last year's overwhelming support of this event, and we sincerely hope that you will join us again on August 18, for 2018's festivities as a runner, walker, volunteer or spectator.

Questions? Race Director - Sharron Faff at 967-8240

HAPPY TRAINING

Volcano Grown Produce!!



LETTUCE, SPINACH, STRAWBERRIES

OTHER VEGES & JAMS

Sundays 6-10am at Cooper Center
Wednesdays 2-5pm at our farm stand
Or by appointment

McCall Flower Farm, Inc

19-4277 Haunani Road Volcano, Hawaii
Jeff 937-1056 or Landline 928-6456
mccallsfarmandstainedglass@hawaii.rr.com

HOUSE PAINTING

- ✓ Interior/Exterior
- ✓ Decks & Roofs
- ✓ Power Washing



- ✓ Wood Repair
- ✓ Volcano References
- ✓ Free Estimates

CALL TOMMY

808.397.1491

Volcano Summit Sale

Yes We Are Open as Usual
Support Our Local Businesses
10% discount at Cafe Ono
and Volcano Garden Arts



**Fresh Organic Foods
& Locally Crafted Treasures**
19-3834 Old Volcano Rd. • Ph. 985-8979
please visit our websites at
volcanogardenarts.com • cafeono.net

Volcano Maintenance and Repair

Mechanical Systems, Catchment and
Water Systems, Filters, Pumps, Water
Heaters, Faucets, Timers, General
Maintenance.

POB 2074
Volcano, Hi. 96785

808-315-5130

jeffreyirvin@gmail.com

Jeff Irvin Lic. W44389348-01

Beautiful WEBSITES \$100

by certified computer graphics designer
FREE ONLINE WEB HOSTING

assistance with domain registration

100 business cards printed for \$25

Call Sher 967-8553 or

Email: kipuka22@yahoo.com



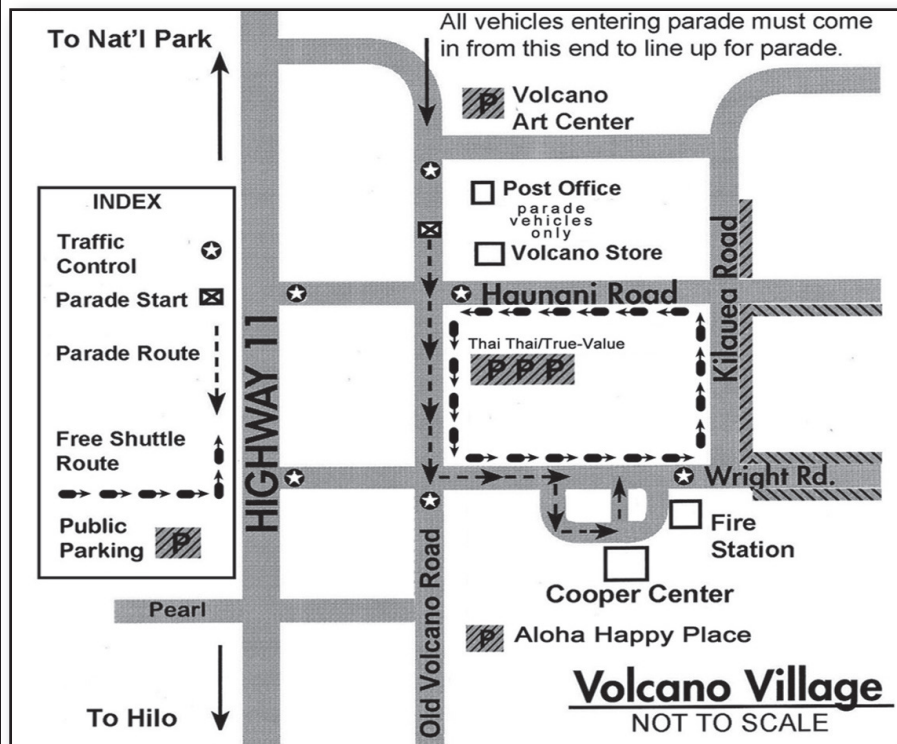
The Voice

of the Volcano Community Association



June 2018

Volcano Parade is Wed. July 4th, 2018 at 9 am



The Volcano 4th of July Parade Route is just over a half mile starting at the Volcano Post Office, down along Old Volcano Road, left at Wright Road and ending up at Cooper Center. The parade starts at 9:00 am on July 4th. There will be some road closures from 8:15 am until about 10:30 am or until the parade finishes. permit # 18-19

Parking is always an issue in Volcano on the 4th of July due to the parade and all the festivities. The map on the left shows you where you can park on Wednesday, July 4th since parking will not be allowed at Cooper Center where all the activities will be happening after the parade. There will be limited parking at the Niaulani Campus of the Volcano Art Center, some parking between the Volcano Post Office and Volcano Store for parade vehicles only, but **True Value Hardware / Thai Thai Restaurant** has the biggest parking lot and the shuttle stops right in front. There will also be limited street parking along Haunani and Wright Road above Kilauea Road, but beware of soft shoulders. **Aloha Happy Place** on Old Volcano Road also has 20+ free parking spaces to offer. (see map)

Every year the VCA hires a KMC shuttle bus to help people get to Cooper Center and back to their cars. The shuttle is totally FREE to use and follows at the end of the parade. From Cooper Center the shuttle goes up

Wright Road, left on Kilauea, down Haunani and left on Old Volcano Road and back to Cooper Center. The shuttle is easy to spot because it is white with red stripes and says "KMC-A Joint Services Recreation Center" on the side. Please use this shuttle with our compliments

If you would like to be in the parade you can download an entry form on the VCA website at www.volcanocommunity.org under the events tab or send an email to vcainfo@yahoo.com. >>>>

Volcano Community Association Mission Statement

To improve and protect the quality of life in Volcano, County and State of Hawaii, on behalf of all residents of the area. To promote the social and educational advancement, increase recreational opportunities, ensure health, protect natural environment, and develop community spirit. Also, it will undertake any consonant project the community may be moved to assign to it. However, it will remain nonpartisan and nonsectarian.

The Voice of the Volcano Community Association

is published by the VCA Board of Directors:

Vicki Arthur, Anne Farahi, Jane Field, Meghan Jerolaman,
Mary Narito, Enoch Simpson, Evelyn Wight and Corie Yanger
PO Box 600 Volcano, HI 96785
www.volcanocommunity.org
vcainfo@yahoo.com

The Voice of the Volcano Community Association

Building community since 1980

Hawaii
County
Band

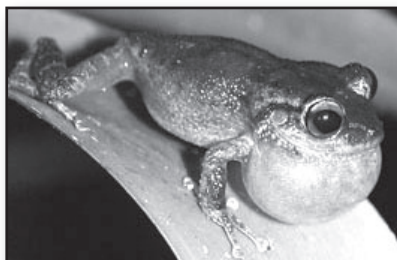


cont. from page 6

Volunteers can call Meghan Jerolaman our parade coordinator at (808)333-7588 or email mjerolaman@gmail.com. Vendors at Cooper Center need to reserve their space by contacting Linda Ugalde and the Cooper Center Council. Their website is www.thecoopercenter.org. Lets all have a wonderful and safe 4th!

Meghan Jerolaman parade coordinator

Our VCA vice president Vicki Arthur on the left painted faces at the 2017 July 4th keiki games. There will be lots of fun for the whole family again this year.



Coqui Control Strategies in Volcano Vary by Neighborhood

What is being done to control the steadily increasing number of coqui frogs heard in Volcano? That varies greatly by neighborhood. At lower, warmer elevations, in Royal Hawaiian, Hawaiian Orchid Isle, and 'Ohi'a Estates, coqui breed prolifically and populations are very high throughout these neighborhoods; neighborhood-wide control is no longer feasible. Some residents control coqui immediately around their homes in order to get a good night's sleep or be heard on the phone over the background noise. Coqui finding is mostly a self-taught skill. One tactic that helps in pinning down the location of the calling coqui is to listen from different areas surrounding the frog. After you see the frog but are not confident about hand capturing it, spray it directly with citric acid. Details about how to capture or spray coqui are available on the "Coqui Fact Sheet" under Community Resources on the Volcano Community Association website: www.volcanocommunity.org

Slightly higher up the mountain in Mauna Loa Estates, breeding populations are scattered, and many areas are still relatively quiet. The neighborhood Coordinator, John Hoover (985-9906) and his dedicated crew, Terence Spencer, Steve Brantley and Ian McMillan will come to your location if there are just one or a few frogs and control is feasible and worthwhile. Breeding populations are less common in Volcano Village, but many more frogs are now "hitchhiking" to this neighborhood on cars, potted plants, and building materials. Contact the neighborhood coordinator, Tim Tunison (769-7258 or volcanoplantguy@gmail.com) to report a frog. We know about the ones at Cooper Center, Post Office, and businesses along Old Volcano Road. Hopefully, the Volcano Village Coquistadores crew will be able to catch up (no pun intended) and remove the numerous newcomers and continue to be able to control frogs village-wide.

The cooler and drier Volcano Golf Course subdivision is the least favorable habitat in Volcano for coqui frogs but they are still there and increasing in number as more arrive from lower elevations. Diane Ware (967-8642) is now the neighborhood coordinator and the person to call to report frogs. The national park is committed to controlling coqui, with an employee hired from May to November to focus on frog removal. The Park is doing what they can about the known breeding populations in Kilauea Iki Crater and the Mauna Ulu trailhead parking area.

submitted by Tim Tunison

JUNE at the Volcano Art Center & Gallery

Welcome to summer at Volcano Art Center!

Fishponds Of Hawai'i by Carol Araki Wyban continues through June 24 at VAC Gallery. This mixed media, fine art exhibition presents Hawaiian fishponds as cultural treasures that provide a deep and profound insight of ancient Hawaiian perspectives in relation to their environment. A site visit is scheduled for Tuesday, June 5 at 11am at the Kalahuipua'a Fish Ponds at the Mauna Lani Bay Hotel and Bungalows. Cultural historian, Danny Kaniela Akaka will share the history and legends of the area. A third and final site visit includes an overnight camping event coupled with a service project with the Nature Conservancy at Kiholo Bay & is scheduled for Thursday, June 21st - Friday, June 22nd. Participation in the various site visits is limited. Transportation is not included however carpooling may be arranged. Registration is required by calling the Volcano Art Center.

Birds of Hawai'i Volcanoes National Park: The Hawai'i Nei Invitational Exhibition is on display 9am - 5pm, daily from June 30 through August 12 at VAC Gallery in Hawai'i Volcanoes National Park. The multi-media exhibit showcases the work of eight artists focusing on the birds of Hawai'i Volcanoes National Park. The exhibit is open to the public and free of charge although park entrance fees apply. A special opening reception with the eight participating artists will be held on Saturday, June 30 from 5-7 pm at VAC gallery.

VAC's gigantic rummage *yART Sale* happens on June 2 from 8:30am - 2pm. Proceeds benefit VAC programs and workshops!

Stained Glass Basics II, taught by Claudia McCall, will be offered on June 2, 3, 9 & 10, 2018: Saturday and Sunday from 9am - 12pm. This class will cover pattern design, allowing students to work on their own design as a second project



upon successful completion of "Stained Glass Basics I." Anyone with prior copper foil stained glass experience is welcome to enroll.

Hula Voices at VAC Gallery on June 7 from 7 - 8pm, presents an engaging, intimate "talk story" session with Hawai'i Island kumu hula who live lives centered on the practice of hula and its associated arts.

Join Lois & Earl Stokes for the Dr. Seuss-inspired *Zentangle: Stacks and Dangles Design for a Whimsical Garden* class on June 9 from 10am - 1pm.

This month's *Jazz in the Forest* concert theme is "Jazz Goes to the Movies!" Join us on June 9 for a 4:30pm or 7pm show.

Find your passion all over again! Learn the tricks that can pull you out of any drawing funk. Artist Rose Adare will cover a variety of drawing techniques in the *Figure Drawing* workshop on June 16 from 10am - 3pm.

Learn the basics of culturing cabbage and various vegetables into probiotic-rich Sauerkraut, as well how to make your own Kombucha with Jasmine Silverstein of HeartBeet Foods on June 16 from 10am - 1pm.

VAC is proud to introduce a new *Thursday Night at the Center* series on June 21 at 7pm: Literature of the Volcano Part 1, focusing on Hawaiian mo'olelo, oli, mele and hula (ancient and modern).

Exaggerate! Be bold with colors and yourself using lights and darks and enjoy the marks you make on paper using a proven signature rotational method for success with soft pastels. Big Island artist Patti Pease Johnson can help you gain the confidence and pastel techniques in the *Soft Pastel Still Life* workshop on June 30 from 9am - 12pm.

This month's *Hula Kahiko* performance happens on June 16 at 10:30am with Hope Keawe with Hula Halau Mana'olana and Nā Mea Hula with Kumu Kaho'okele Crabbe with Halauolaokalani from 11am - 1pm.

Monday Movie Nights, featuring classic, cultural and documentary films, happen every Monday at 7pm. Popcorn, soft drinks, beer and munchies are available for purchase. Movies are FREE, but a \$5 donation per person is appreciated.

The *Thursday Evening Pottery Drop-In* clay class with Erik Wold continues every Thursday at 6pm.

The Volcano Art Center is a non-profit educational organization created in 1974 to promote, develop, and perpetuate the artistic and cultural heritage of Hawai'i's people and environment through activities in the visual, literary, and performing arts. Please visit www.volcanoartcenter.org.

Kilauea PC Mobile Computer Services

On site computer solutions and support for your business, home, or home office.

PC Diagnostics and repair
Computer Networking Services
Consultations and Upgrades

Michael Boucher 808 896 0060
mike@kilaueapc.com

Windows XP, Vista, 7, 8, 10 Server 2003, 2008 SBS and Exchange Server

**Microsoft
CERTIFIED
Technology
Specialist**



Catholic Sunday Mass

St. Theresa's in Mt. View

5:30pm on Saturday

10:00am on Sunday

New Hope Christian Fellowship

Hilo side of Akastuka Orchid

Sunday Svc. 8:30 am

Pastor Ray Glory, Jr.

967-7129

The Village Church A/G

Wright Road just past Road A

Pastor Lani and Ted Bair

Sunday School at 9am Sunday

Worship and Service at 10 am

Wednesday Evening Bible Study

6:30pm Church phone: 967 8191

Society of Friends (Quakers)

Royal Hawaiian Estates

4 pm 985-7037

3rd Sunday of each month

The Baha'i Faith, Mauna Loa

Estates, 551-6329, 6:30 pm,

Tuesdays All are welcome!

Buddhist Meditation

Volcano Art Center Nialauli

Campus 3-5 p.m. Second Sunday

of each month 985-7470 Everyone

welcome, beginners too!

The Unitarian-Universalists

of Puna 10:30 AM Sundays in

Hawaiian Paradise Park

Call 967-7295 for a ride.

Christian Hebrew Roots

Saturday, 10:00 - 12:00

Call William: 937-2311

Hale Lokahi Retreat House

Mini retreat every Sunday

10:30a to after Pot Luck Lunch

19-3848 Old Volcano Road

The Volcano School of Arts & Sciences Receives GIA Toward Construction of New Campus

Friends of VSAS was awarded a \$450,000 Grant-in-Aid from the state to begin construction of the Pre-K – 4th grade classroom buildings at Keakealeani Campus. Although we still need to raise additional money, the grant positions us well to pursue more funding. The following legislators supported our request, and we are asking community members to write letters as citizens in support of our project to thank them for their support: Representative Richard Onishi, Senator Russell Ruderman, Senator Gilbert Keith-Agaran, Representative Nicole Lowen, Senator Kai Kahele, Representative Sylvia Luke. Letters can be addressed to the legislators at: Hawaii State Capitol, 415 S. Beretania Street, Honolulu, HI 96813. These legislators were faced with long list of worthy projects and they chose our project. Please join us in thanking them for their support for our school.

Are You Expecting a Baby This Summer? Roots of Empathy is a social and emotional learning program that brings a baby into the classroom as a “teacher” to help awaken and strengthen empathy. Through observing the baby, students learn to identify and understand the baby’s emotions and needs, as well as their own and those of others. Roots of Empathy has been in schools since 1996, and research shows that the program significantly reduces aggression and bullying; increases prosocial behaviors including sharing, caring, kindness, and helping. Roots of Empathy babies must be between 2 and 4 months starting in August or September. Parent and baby visit the classroom once a month for about 30 minutes over the course of the school-year. More information about the program is available on-line at rootsofempathy.org. If you are interested in being a Roots of Empathy family or instructor, please contact Kim at 985-8537 or kmiller@volcanoschool.net.

Enrollment. Space is available in PreK and 2nd grade campus program and 1st-8th grades in our Kula ‘Amakihi Community-Based Education program. Call 808-985-9800 or visit our website to enroll now.

June Events at KMC

Open Mic Night: Wednesday, June 6, Lava Lounge from 6:00 pm – 10:00 pm. Calling all people to show off their talents! Singers, Bands, Comedians, etc. For patrons 21 years old and older. Call 967-8365 after 4pm for more details and to reserve your spot.

Mongolian BBQ: Saturday, June 16, Crater Rim Café, from 5:00 pm – 8:00pm. \$.85 per ounce for 13 different veggies, four different meats, a variety of sauces, rice, chow mein and a beverage. Call 967-8356 for more details.

Father's Day Buffet: Sunday, June 17, Crater Rim Café, from 5:00 pm – 8:00 pm. Treat Dad to with Prime Rib, Lemon Butter Fish with Tropical Salsa and Vegetable Stir Fry with Tofu as our main entrees. Adults \$29.00 and Child 6-11 years \$14.50.

Kilauea Luau Buffet every Friday night from 5:00 pm – 8:00 pm in the Crater Rim Café. Adults \$16.25 and Child (6-11) \$8.25. Free Hula Show on June 1, 8, 15 & 22 from 7:00 pm – 8:00 pm. Call 967-8356 for more information.

KMC is open to all authorized KMC patrons and sponsored guests. Park entrance fees apply.

Aloha Jazz lovers; Jazz in the Forest for June will be "At the Movies"

It has been quite a challenge to choose a single program from the many film scores that feature jazz scores. We are happy to report that the dynamic duo of vocalist - percussionist Binti Bailey & guitarist synthesizer magician Larry Seyer will be joining flutist- sax - clarinetist Jean Pierre Thoma of the Jazztones, and film master Jesse Tunison, to present a very unusual collection of films with jazz accompaniment at the Volcano Art Center in the Village.

We will have the videos behind the band in these selections - and more:

"Smile" from the 1936 film - "Modern Times" - with Charlie Chaplin

"Someday My Prince Will Come"

from the 1938 film "Snow White"

"When You Wish Upon A Star"

from the 1940 Disney classic, "Pinocchio"

"Speak Low" from the 1940 Ava Gardner film "One Touch of Venus"

"Summertime" of the 1935 opera and 1959 film

"Porgy and Bess" by George Gershwin

After several more additions, we will jump to the James Bond film "Sky Fall"

The Laura Croft, "Tomb Raider" film, "Pandora's Box"

"The Fifth Element" - Deva Dance

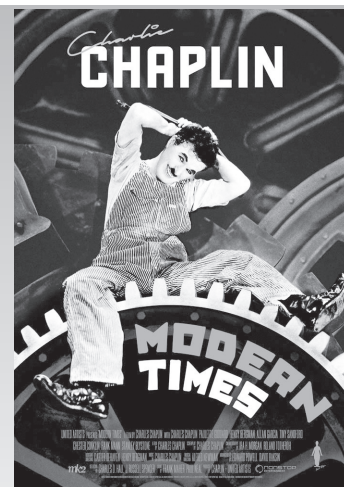
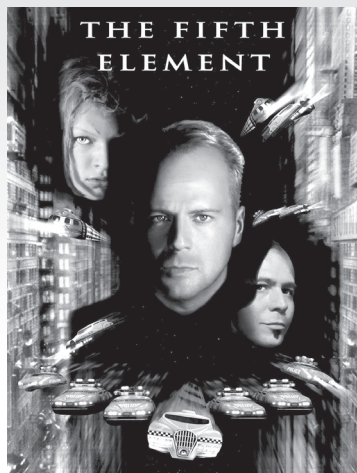
"Coco and Boy" music by Alexandre Desplat

"The Shape of Water" - Theme

and "If You Don't Know" and "Together We will Live Forever" from "The Fountain"

This will be an unusual production, and we are excited to present this blend of music and film.

We invite you to either the 4:30 or 7 PM concert on June 9.



Friends of Hawai'i Volcanoes National Park & the Hawai'i Volcanoes Institute Present

SUNDAY WALK IN THE PARK

Sunday, June 9, 2018

10 AM TO 2:00 PM

This month's hike we visit the park's Kahuku Unit. Come explore with us the Palm trail, a 2.6 mile loop traversing scenic pastures along an ancient cinder cone, with some of the best panoramic views Kahuku has to offer.

The walk is free to Friends members (though non-members are welcome to join the non-profit Friends group in order to attend).

Registration is required. Visit www.fhvn.org, email us at admin@fhvn.org or call our office at (808) 985-7373.

HELP SUPPORT THE YOUTH RANGER PROGRAM

THE PURPOSE OF THE HAWAII VOLCANOES NATIONAL PARK YOUTH RANGER PROGRAM IS TO PROVIDE EDUCATION AND CAREER PREPARATION TO LOW-INCOME AND UNDER-SERVED YOUTH IN RURAL EAST HAWAII (HIGH SCHOOL JUNIORS AND SENIORS). YOUTH ARE GIVEN THE OPPORTUNITY TO TRAIN WITH PARK RANGERS AND FRIENDS OF HAWAII VOLCANOES NATIONAL PARK STAFF IN MANY DIFFERENT AREAS/PROGRAMS WITHIN THE PARK. YOUTH ARE PROVIDED THE OPPORTUNITY TO WORK IN INTERPRETATION, NATURAL RESOURCES, CULTURAL RESOURCES, MAINTENANCE, PROTECTION, ADMINISTRATION AND FHVNP'S OFFICE. AFTER TRAINING, SUCCESSFUL CANDIDATES ARE HIRED TO WORK DURING THE SUMMER WITHIN THESE AREAS/ PROGRAMS OF THE PARK.

FRIENDS SPONSORS A SIGNIFICANT PORTION OF THIS PROGRAM THROUGH GRANTS AND DIRECT DONATIONS. IF YOU WOULD LIKE TO SPONSOR A WEEK (\$440.00), OR ANY OTHER AMOUNT DURING THE SUMMER FOR ONE DESERVING YOUTH, PLEASE CONTACT ELIZABETH FIEN, EXECUTIVE DIRECTOR AT 985-7373.

YOUR DONATION GOES DIRECTLY TO THE YOUTH'S WORK STIPEND.

"ONE-WEEK YOUTH" SPONSORS WILL BE INVITED TO ATTEND THE YOUTH RANGER INTERNSHIP GRADUATION PARTY AND THE END OF SUMMER CELEBRATION.

FOREST RESTORATION PROJECT

Friday, June 15, 2018

8:30 AM TO 3:00 PM

This month's project we will be working on the Mauna Loa strip planting native seedlings.

Our goal is a crew of 14 people, and pre-registration is required. All participants will need to sign a Friends release form and a park volunteer form.

If you are interested in volunteering, please contact Patty Kupchak at forest@fhvn.org or (808) 352-1402 by Monday evening June 11, 2018. Please include your first & last name(s), email address(s) and a phone number.

PO Box 653 • Volcano, HI 96785



985-7373 • WWW.FHVN.ORG

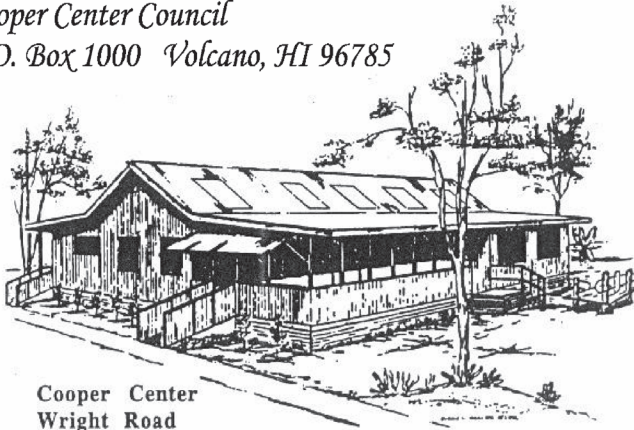
June 2018 at Cooper Center

Sun	Mon	Tue	Wed	Thu	Fri	Sat
<div>27</div> <div>6am - -10a Market</div> <div>4:30pm - Al-Anon @</div>	<div>28</div> <div>Memorial Day</div> <div>9am - Tai Chi</div> <div>1pm - Tai Chi</div> <div>4pm - Halau Pro</div>	<div>29</div> <div>9am - Tai Chi</div> <div>1pm - Tai Chi</div> <div>4pm - Halau Pro</div>	<div>30</div> <div>9:30am - a Yoga</div> <div>4:30pm - Halau</div>	<div>31</div> <div>9am - a Seniors Club</div> <div>4pm - Food Pantry</div>	<div>1</div> <div>9am - Tai Chi</div> <div>1pm - Tai Chi</div> <div>5:30pm - Bstore-Big</div>	<div>2</div> <div>9am - CERT Meeting</div> <div>6:30pm - Keep it</div>
<div>3</div> <div>6am - -10a Market</div> <div>4:30pm - Al-Anon @</div>	<div>4</div>	<div>5</div> <div>9am - Tai Chi</div> <div>1pm - Tai Chi</div> <div>4pm - Halau Pro</div>	<div>6</div> <div>9:30am - a Yoga</div> <div>4:30pm - Halau</div>	<div>7</div> <div>9am - a Seniors Club</div>	<div>8</div> <div>9am - Tai Chi</div> <div>1pm - Tai Chi</div> <div>5:30pm - Bstore-Big</div>	<div>9</div> <div>8am - a Swap Meet</div> <div>6:30pm - Keep it</div>
<div>10</div> <div>6am - -10a Market</div> <div>4:30pm - Al-Anon @</div>	<div>11</div> <div>10am - a Quilts</div>	<div>12</div> <div>9am - Tai Chi</div> <div>1pm - Tai Chi</div> <div>4pm - Halau Pro</div>	<div>13</div> <div>9:30am - a Yoga</div> <div>4:30pm - Halau</div>	<div>14</div> <div>6:30pm - VERP</div> <div>9am - a Seniors Club</div>	<div>15</div> <div>9am - Tai Chi</div> <div>1pm - Tai Chi</div> <div>5:30pm - Bstore-Big</div>	<div>16</div> <div>6:30pm - Keep it</div>
<div>17</div> <div>Father's Day</div> <div>6am - -10a Market</div> <div>4:30pm - Al-Anon @</div>	<div>18</div> <div>6:30pm - 6:30p VCA</div>	<div>19</div> <div>9am - Tai Chi</div> <div>1pm - Tai Chi</div> <div>4pm - Halau Pro</div>	<div>20</div> <div>9:30am - a Yoga</div> <div>4:30pm - Halau</div> <div>7pm - NeighWatch</div>	<div>21</div> <div>9am - a Seniors Club</div>	<div>22</div> <div>9am - Tai Chi</div> <div>1pm - Tai Chi</div> <div>5:30pm - Bstore-Big</div>	<div>23</div> <div>8am - a Swap Meet</div> <div>6:30pm - Keep it</div>
<div>24</div> <div>6am - -10a Market</div> <div>4:30pm - Al-Anon @</div>	<div>25</div>	<div>26</div> <div>9am - Tai Chi</div> <div>1pm - Tai Chi</div> <div>4pm - Halau Pro</div>	<div>27</div> <div>9:30am - a Yoga</div> <div>4:30pm - Halau</div>	<div>28</div> <div>9am - a Seniors Club</div> <div>4pm - Food Pantry</div>	<div>29</div> <div>9am - Tai Chi</div> <div>1pm - Tai Chi</div> <div>5:30pm - Bstore-Big</div>	<div>30</div> <div>6:30pm - Keep it</div>

Volcano Community News

Cooper Center Council

P.O. Box 1000 Volcano, HI 96785



Cooper Center
Wright Road

Non-Profit Org
U. S. Postage
Paid
Permit No. 12
Volcano, HI
96785

*****CART-RT SORT **WSS POB

RESIDENT
P.O. BOXHOLDER
VOLCANO, HI 96785



**VOLCANO
ART CENTER**
WHERE PEOPLE, ART AND NATURE MEET

**June
Events**

Gallery Events "Fishponds of Hawai'i"

by Carol Araki Wyban

This mixed media, fine art exhibition presents Hawaiian fishponds as cultural treasures that provide a deep and profound insight of ancient Hawaiian perspectives in relation to their environment.

Continues through June 24th.

Fishpond Tours:

Tuesday, June 5th at 11am

Kalahuihua Fish Ponds at Mauna Lani with Cultural historian,

Danny Kaniela Akaka

Thursday, June 21st - Friday, June 22nd 2PM - 2PM(Overnight)

Kiholo Bay with the Nature Conservancy

"Birds Of Hawai'i Volcanoes National Park: The Hawai'i Nei Invitational Exhibition"

The multi-media exhibit showcases the work of eight artists focusing on the birds of Hawai'i Volcanoes National Park. Opens June 30th

Hula Voices - June 7, 7 - 8pm

an intimate "talk story" session with Hawai'i Island's kumu hula focusing on hula and its associated arts

Hula Kahiko - June 16, 10:30am

Hula Kahiko featuring Hope Keawe with
Hula Halau Mana'olana

Nā Mea Hula with Kumu Kahōōkele Crabbe with Halauolaokalani

Ni'aulani Campus

6/2 - Stained Glass Basics II with Claudia McCall

6/2 - yART Sale! Gigantic Rummage & Art Sale

6/9 - Zentangle: Stacks & Dangles with Lois & Earl Stokes

6/9 - Jazz in the Forest: Jazz Goes to the Movies

6/16 - Figure Drawing with Rose Adare

6/16 - Sauerkraut & Kombucha with Jasmine Silverstein

6/21 - Thursday Night at the Center: Literature of the Volcano Series

Part 1: Hawaiian mo'olelo, oli, mele and hula (ancient and modern)

6/30 - Soft Pastel Still Life with Patti Pease Johnson

Call 967-8222 or visit
www.VolcanoArtCenter.org



Acupuncture Works
and
Body Therapy

Eve de Molin, L.Ac., L.M.T.
B.S. Psychology (32 Years Exp.)

Hilo Office: 938-6341
Volcano Office: 985-8699

KĪLAUEA LODGE
967-7366

Breakfast & Lunch Daily • Sunday Brunch
Dinner Nightly ~ reservations recommended
Romantic Rooms • Gift Shop • Gift Certificates
www.kilauealodge.com



ELITE
PACIFIC PROPERTIES

Luxury Service with Aloha Spirit

Ronald A. Rigg RB-15044
808-936-1962 ron@ronrigg.com
Resident "Volcano Realtor" since 1986

"LIVE VOLCANO"

Amaumau 29 wooded ac.
w/ Hicks Home in the Village
MS# 607699 \$399,785



NEIGHBORHOOD WATCH

Meetings every 3rd Wednesday
at Cooper Center at 7pm.
Coordinator: Fred Machado 985-7078