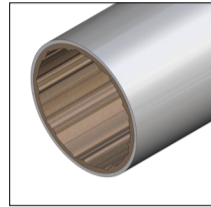
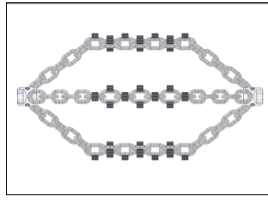


Clay Pipes

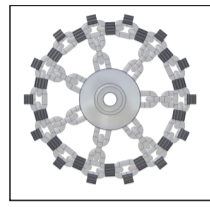
DESCALING



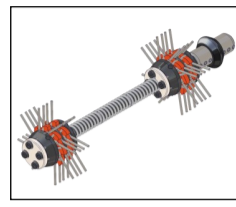
INTACT



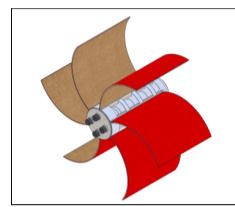
Original Premium



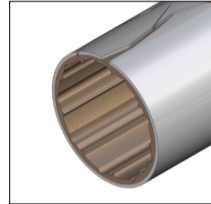
Cyclone Premium



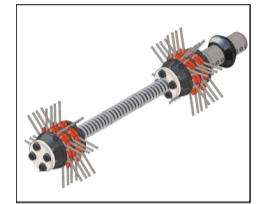
Smart Spider



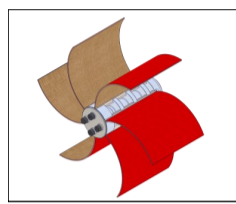
Smart Cutter



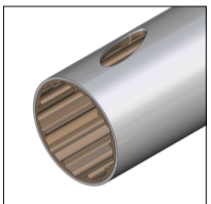
FRAGILE



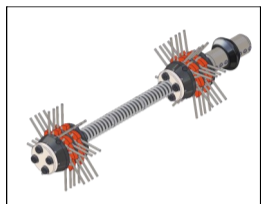
Smart Spider



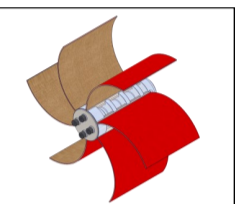
Smart Cutter



DAMAGED

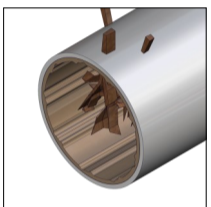


Smart Spider

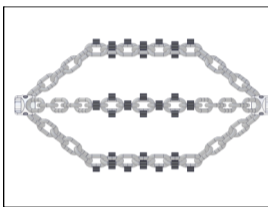


Smart Cutter

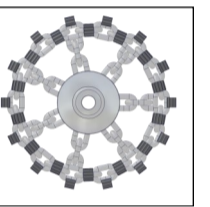
SPECIAL



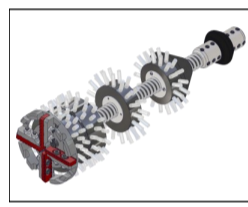
ROOTS



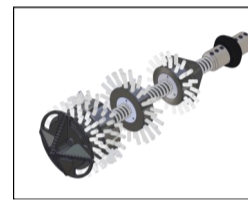
Original Premium



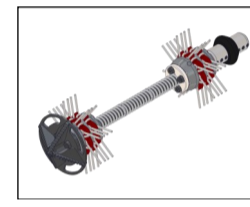
Cyclone Premium



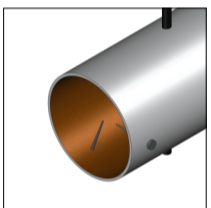
Smart Crusher



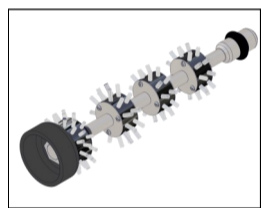
Twister+



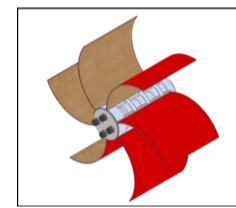
Smart Spider with Drill Head



METAL

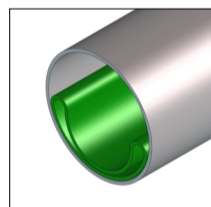


Twister Metal Grinder*

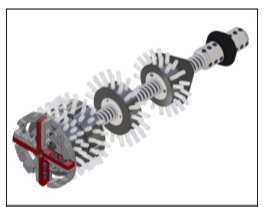


Smart Cutter

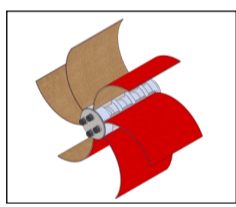
COLLAPSED LINER



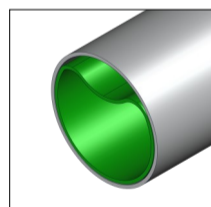
FULL



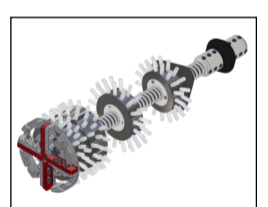
Smart Crusher



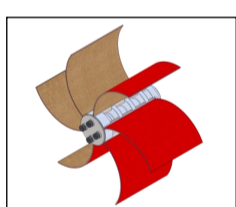
Smart Cutter



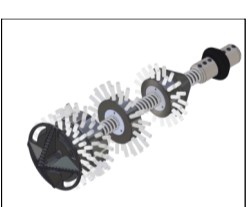
PARTIAL



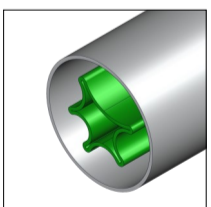
Smart Crusher



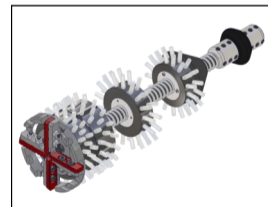
Smart Cutter



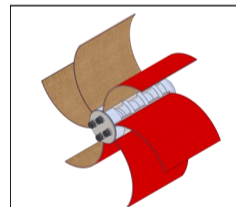
Twister+



"RHUBARB"

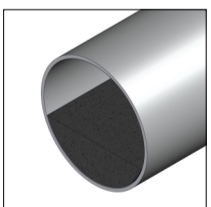


Smart Crusher

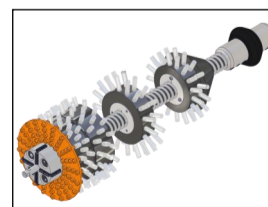


Smart Cutter

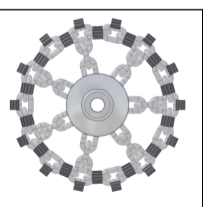
CONCRETE



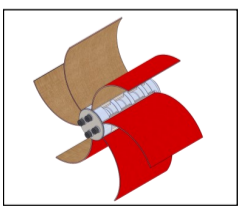
PARTIAL



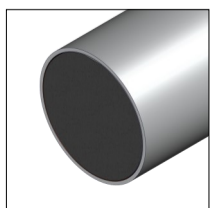
Twister Concrete Remover



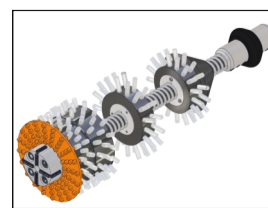
Cyclone Premium Chain



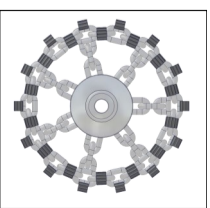
Smart Cutter



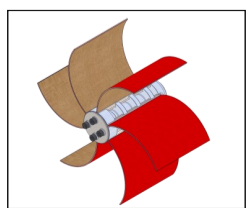
FULL



Twister Concrete Remover



Cyclone Premium Chain



Smart Cutter

Maxi Miller Power+

Shaft Diameter:

18 mm (3/4")

Range:

18 m (59 ft)

Additional Extension**:

11 m (36 ft)

Pipe Diameter Range for Tools:

DN100 (4") to DN300 (12")

Power Supply:

400/480 Volt, 3-Phase,

16 amp

**Shaft extension sold separately.

Maxi Miller Power+

Available Tools

Tornado Original Chain

Tornado Cyclone Chain

Original Premium Chain

Cyclone Premium Chain

Smart Spider

Smart Crusher

Twister Concrete Remover

Smart Cutter

Twister+

Twister Metal Grinder*

*possible with 18/12mm (3/4"/1/2") adaptor

Size Range

DN100 (4") to DN300 (12")

DN150 (6") to DN300 (12")

DN100 (4") to DN300 (12")

DN100 (4") to DN300 (12")

DN150 (6") to DN225 (9")

DN70 (3") to DN225 (9")

DN100 (4") to DN225 (9")

DN100(4") to DN300 (12")

DN150 (6") to DN300 (12")

DN100 (4")