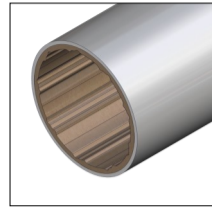
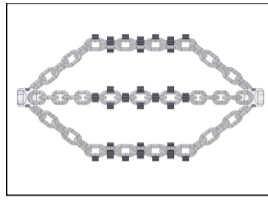


Clay Pipes

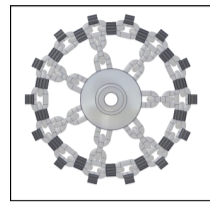
**D
E
S
C
A
L
I
N
G**



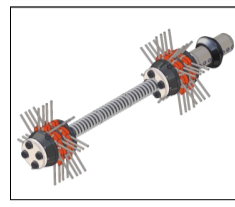
INTACT



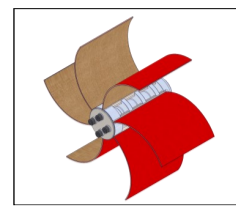
Original Premium



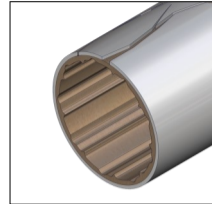
Cyclone Premium



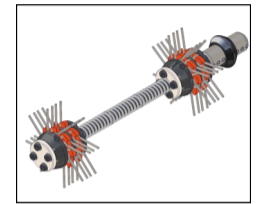
Smart Spider



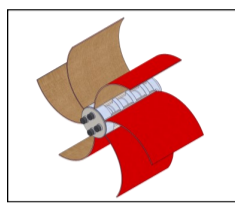
Smart Cutter



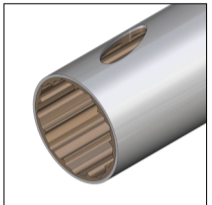
FRAGILE



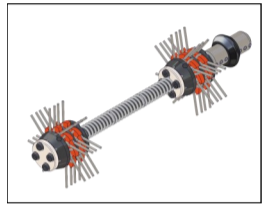
Smart Spider



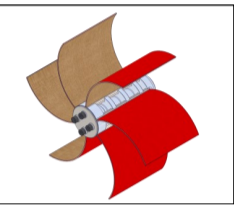
Smart Cutter



DAMAGED

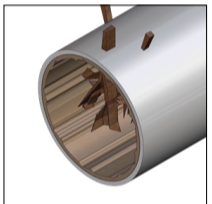


Smart Spider

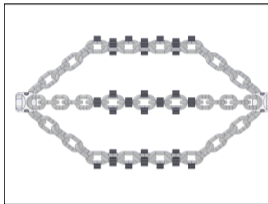


Smart Cutter

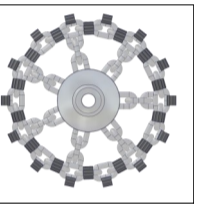
**S
P
E
C
I
A
L**



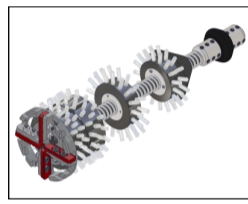
ROOTS



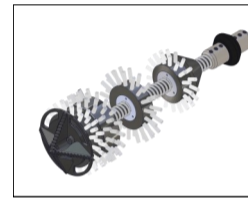
Original Premium



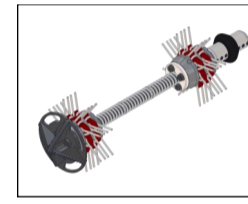
Cyclone Premium



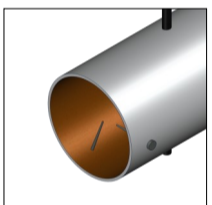
Smart Crusher



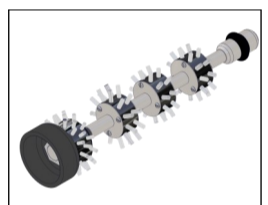
Twister+



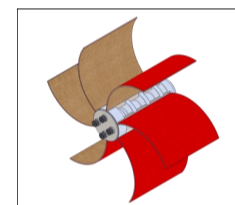
Smart Spider with Drill Head



METAL



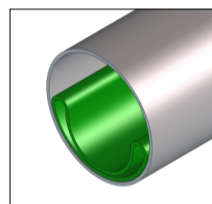
Twister Metal Grinder*



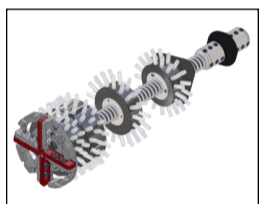
Smart Cutter

**C
O
L
L
A
P
S
E
D

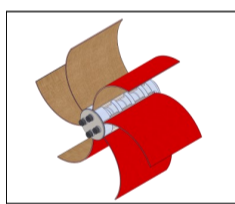
L
I
N
E
R**



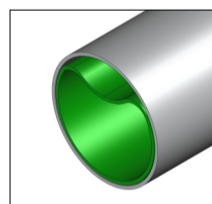
FULL



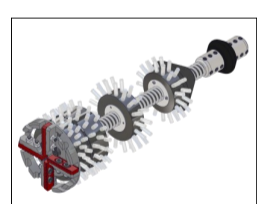
Smart Crusher



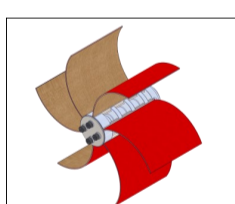
Smart Cutter



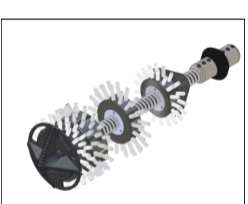
PARTIAL



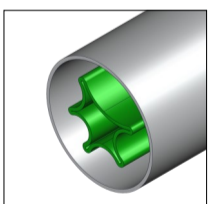
Smart Crusher



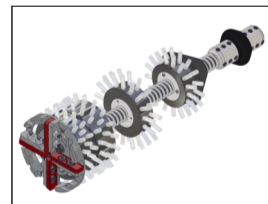
Smart Cutter



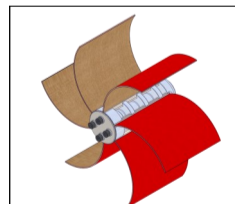
Twister+



"RHUBARB"

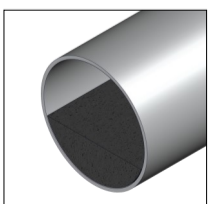


Smart Crusher

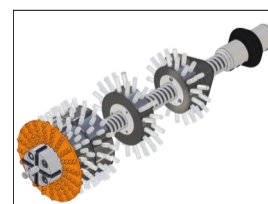


Smart Cutter

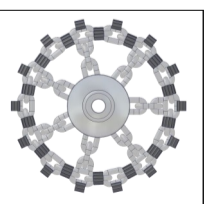
**C
O
N
C
R
E
T
E**



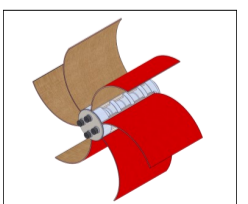
PARTIAL



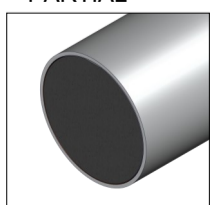
Twister Concrete Remover



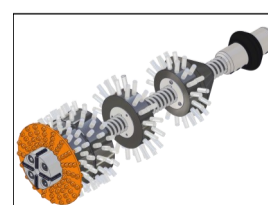
Cyclone Premium Chain



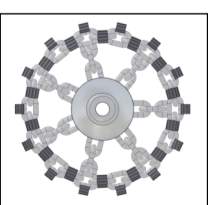
Smart Cutter



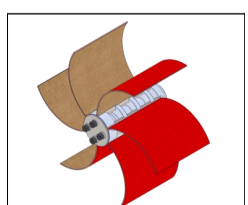
FULL



Twister Concrete Remover



Cyclone Premium Chain



Smart Cutter

Maxi Miller Power+

Shaft Diameter:

18 mm (3/4")

Range:

18 m (59 ft)

Additional Extension**:

11 m (36 ft)

Pipe Diameter Range for Tools:

DN100 (4") to DN300 (12")

Power Supply:

400/480 Volt, 3-Phase,

16 amp

**Shaft extension sold separately.

Maxi Miller Power+

Available Tools

Original Premium Chain

Cyclone Premium Chain

Smart Spider

Smart Crusher

Twister Concrete Remover

Smart Cutter

Twister+

Twister Metal Grinder*

*possible with 18/12mm (3/4"/1/2") adaptor

Size Range

DN100 (4") to DN300 (12")

DN100 (4") to DN300 (12")

DN150 (6") to DN225 (9")

DN70 (3") to DN225 (9")

DN100 (4") & DN150 (6")

DN100(4") to DN300 (12")

DN150 (6") to DN225 (9")

DN100 (4")