



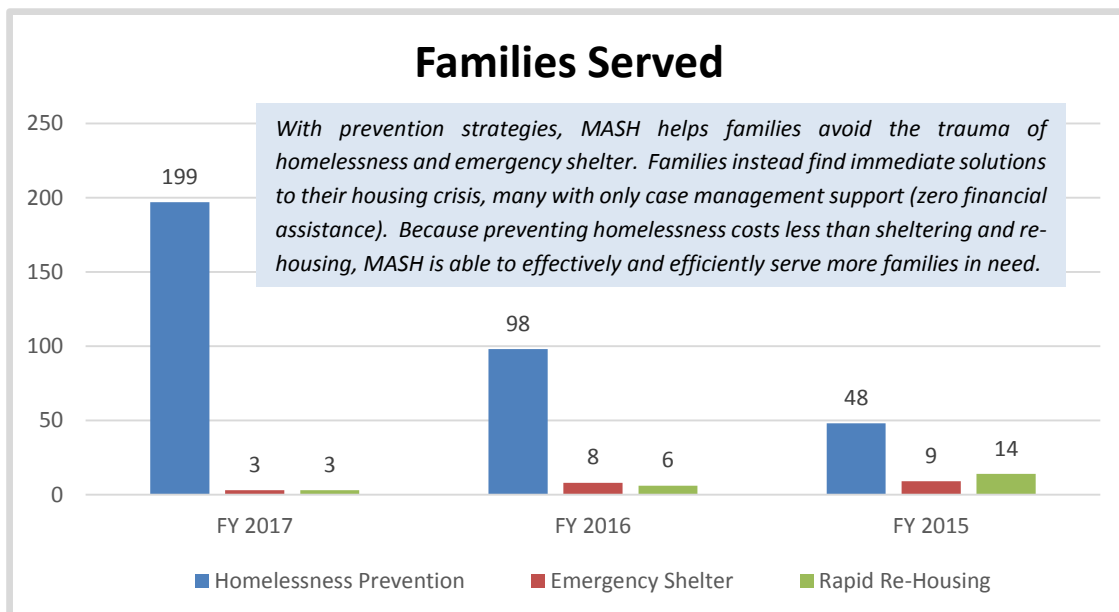
Preventing Family Homelessness, One Family at a Time

MASH Year in Review 2017

July 1, 2016 to June 30, 2017

Mystic Area Shelter & Hospitality, Inc. (MASH) was founded in 1998 to address the needs of Southeastern Connecticut’s homeless and imminently homeless families. MASH’s mission is **Preventing Family Homelessness, One Family at a Time**. MASH is unique in that it is the only non-profit service provider in the region dedicated exclusively to serving families with children. MASH strives to give parents the tools they need to overcome their housing crisis so that they can focus on the well-being of their children. In the nearly 20 years since our founding, MASH has helped over 1,400 families achieve housing stability through pioneering homelessness prevention, emergency shelter and rapid re-housing services.

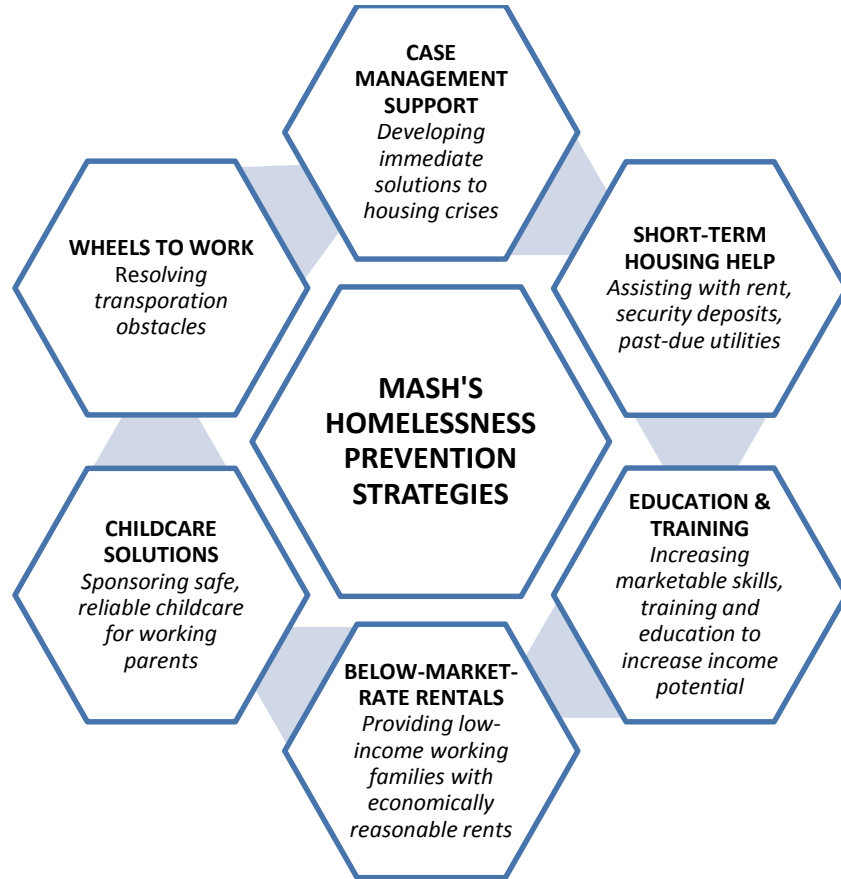
In Fiscal Year 2017, MASH provided support to 205 homeless and at-risk families. By continuing our focus on preventing homelessness, 199 of these families (97%) never had to enter the emergency shelter system.



The 205 families helped in FY 2017 were comprised of a total of 661 family members, including 397 children. At MASH, we see too many parents who experienced homelessness when they were young. By helping families avoid homelessness today and create a more resilient future for their children, MASH hopes to break this cycle of generational poverty and homelessness.

The typical MASH client family is living at or near the Federal Poverty Level, struggling to afford Connecticut’s high rents on their low-wage jobs. These economically challenged families are so precariously housed that a relatively minor crisis (a costly car repair, a sick child, fewer work shifts) can threaten their housing stability enough to result in homelessness.

The following strategies form the cornerstone of MASH's efforts to reduce the number of families falling into homelessness. All of these prevention efforts focus on eliminating the core barriers that contribute to job insecurity and ultimately, housing instability. MASH's goal is always to solve a family's immediate housing emergency and to create a path to long-term housing stability.



MASH would not be able to provide these critical services without generous community support. We are grateful to over 700 individuals, businesses, foundations, state and municipal agencies, local Rotaries and faith communities who together contributed over \$350,000 in FY2017.

FY 2017 Support

