



## 1400 Block S. Morgan Road

Oklahoma City, Oklahoma 73128

### PROPERTY HIGHLIGHTS

- Flat, Development Land
- C-3 Zoning within OKC Limits
- Just South of I-40
- Drive Home Side of the Street
- All City Utilities to Site

TOTAL ACRES 8.95 MOL

ZONING C-3

GENERAL USE Commercial

[www.naisullivangroup.com](http://www.naisullivangroup.com)

**Irmon Gray**

Cell: 1 405 474 7286

[irmon@naisullivangroup.com](mailto:irmon@naisullivangroup.com)

4045 N.W. 64th Street, Suite 340

Oklahoma City, Oklahoma 73116

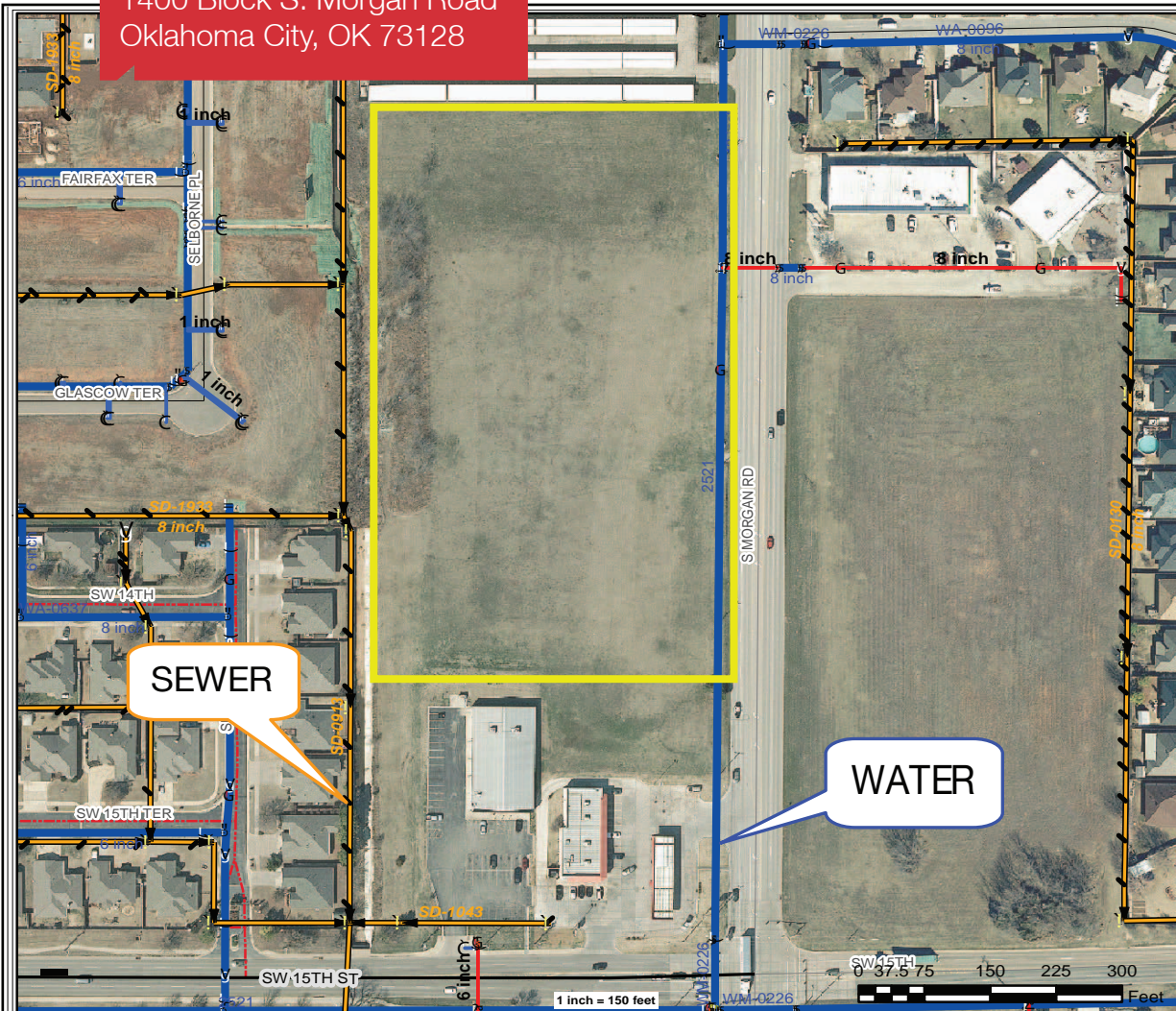
Office: 1 405 840 0600

Fax: 1 405 840 0610

NO WARRANTY OR REPRESENTATION, EXPRESS OR IMPLIED, IS MADE AS TO THE ACCURACY OF THE INFORMATION CONTAINED HEREIN, AND THE SAME IS SUBMITTED SUBJECT TO ERRORS, OMISSIONS, CHANGE OF PRICE, RENTAL OR OTHER CONDITIONS, PRIOR SALE, LEASE OR FINANCING, OR WITHDRAWAL WITHOUT NOTICE, AND OF ANY SPECIAL LISTING CONDITIONS IMPOSED BY OUR PRINCIPALS NO WARRANTIES OR REPRESENTATIONS ARE MADE AS TO THE CONDITION OF THE PROPERTY OR ANY HAZARDS CONTAINED THEREIN ARE ANY TO BE IMPLIED.



1400 Block S. Morgan Road  
Oklahoma City, OK 73128



**Legend**

**Sewer Manhole**  
SubType  
 SD DropManhole  
 SS SplitManhole  
 SS StandardManhole  
 SS SummitManhole  
 Sewer Lateral Line

**Sewer Gravity Main**  
LifeCycleStatus  
 Proposed  
 Active  
 Abandoned  
 Removed

**Sewer Pressurized Main**  
LifeCycleStatus  
 <all other values>  
 Active  
 Abandoned  
 Removed

**Water Pressurized Main**  
LifeCycleStatus  
 Abandoned  
 Active  
 Proposed  
 Removed  
 OKC Legal Boundary

Disclaimer:  
NEITHER THE CITY NOR ANY OF ITS TRUSTS NOR ANY OF THEIR EMPLOYEES, OFFICERS, OR AGENTS WARRANT OR REPRESENT THAT THE INFORMATION OR DATA ON THIS DOCUMENT IS ACCURATE OR APPROPRIATE FOR USE OR RE-USE FOR ANY PURPOSE. THE USER OF THIS DOCUMENT ASSUMES THE SOLE DUTY AND FULL RESPONSIBILITY FOR THE VERIFICATION OF THE INFORMATION AND DATA CONTAINED THEREIN. ANY USE OF OR RELIANCE UPON THIS DOCUMENT OF THE INFORMATION OR DATA CONTAINED THEREIN IS SOLELY, TOTALLY, AND EXCLUSIVELY AT THE USERS OWN RISK

## DEMOGRAPHICS

Population		
1 Mile: 7,307	3 Mile: 37,992	5 Mile: 118,423
Average Household Income		
1 Mile: \$75,474	3 Mile: \$62,332	5 Mile: \$57,735
Total Households		
1 Mile: 2,519	3 Mile: 13,950	5 Mile: 45,156

## LOCATION HIGHLIGHTS

- Great Area Just South of I-40
- Close to Self Storage
- Active Residential Area, Surrounded by Restaurants & Retail
- Mustang Schools

**Irmon Gray**

Cell: 1 405 474 7286

irmon@naisullivangroup.com

**NAISullivan Group**

[www.naisullivangroup.com](http://www.naisullivangroup.com)

4045 N.W. 64th Street, Suite 340  
Oklahoma City, Oklahoma 73116  
Office: 1 405 840 0600  
Fax: 1 405 840 0610