

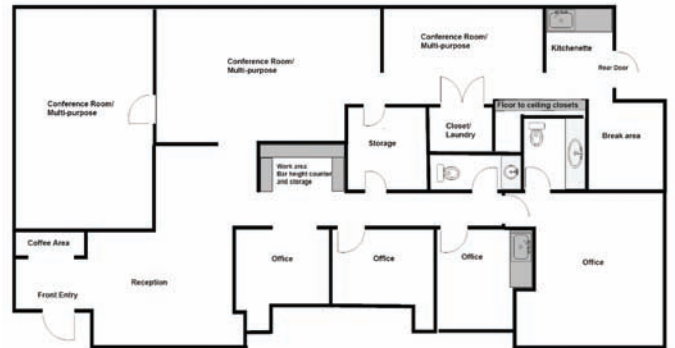


11912 N. Pennsylvania, D4

Oklahoma City, Oklahoma 73120

PROPERTY HIGHLIGHTS

- Move In Ready Completely Renovated
- 1 Large Unit with 2 Access Doors
- Signage Available on Pennsylvania (At Tenant Expense)
- Tenant Pays: Electric, Phone/Internet, Janitorial & Liability Insurance
- Included in Rate: Building Insurance, Exterior Maintenance, Trash & Water



TOTAL SF	1,800 SF MOL
ZONING	O-2
BUILT	1984
GENERAL USE	Office
PARKING RATIO	5.00/1,000

www.naisullivangroup.com

Adrian Lillard

Adrian's Cell: 1 405 227 8511
adrian@naisullivangroup.com

4045 N.W. 64th Street, Suite 340
Oklahoma City, Oklahoma 73116
Office: 1 405 840 0600
Fax: 1 405 840 0610

NO WARRANTY OR REPRESENTATION, EXPRESS OR IMPLIED, IS MADE AS TO THE ACCURACY OF THE INFORMATION CONTAINED HEREIN, AND THE SAME IS SUBMITTED SUBJECT TO ERRORS, OMISSIONS, CHANGE OF PRICE, RENTAL OR OTHER CONDITIONS, PRIOR SALE, LEASE OR FINANCING, OR WITHDRAWAL WITHOUT NOTICE, AND OF ANY SPECIAL LISTING CONDITIONS IMPOSED BY OUR PRINCIPALS NO WARRANTIES OR REPRESENTATIONS ARE MADE AS TO THE CONDITION OF THE PROPERTY OR ANY HAZARDS CONTAINED THEREIN ARE ANY TO BE IMPLIED.

11912 N. Pennsylvania
Oklahoma City, OK 73120



LOCATION HIGHLIGHTS

- At the Corner of N.W. 122nd & Pennsylvania Avenue
- Easy Access to I-235
- Located in the Eagles Business Park

DEMOGRAPHICS

Population

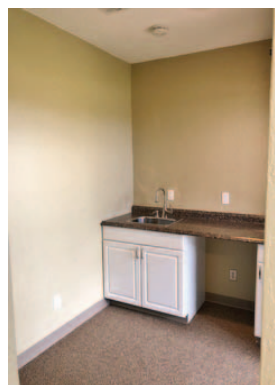
1 Mile: 13,565	3 Mile: 70,296	5 Mile: 169,701
-------------------	-------------------	--------------------

Average Household Income

1 Mile: \$41,125	3 Mile: \$53,476	5 Mile: \$63,318
---------------------	---------------------	---------------------

Total Households

1 Mile: 6,825	3 Mile: 32,177	5 Mile: 74,637
------------------	-------------------	-------------------



Adrian Lillard

Adrian's Cell: 1 405 227 8511
adrian@naisullivangroup.com

4045 N.W. 64th Street, Suite 340
Oklahoma City, Oklahoma 73116
Office: 1 405 840 0600
Fax: 1 405 840 0610

NAISullivan Group



www.naisullivangroup.com



on facebook

Get the latest updates about OKC
Commercial Real Estate
www.facebook.com/OKCCRE/