



5551 N.W. 5th Street

Oklahoma City, Oklahoma 73127

PROPERTY HIGHLIGHTS

- (1) Dock High Door
- (3) Grade Level Doors
- Clear Ceiling Heights: 8' in Office, 10' in Front & 16' in Rear
- Approximately 1,258 SF of Office
- Approximately 2,160 SF Auxiliary Metal Building
- Rooms Attached to Building or Near Main Building: Storage, Break Room, Maintenance Room, Mill Room, 40' x 60' Warehouse
- Ideal for Any Industrial User or Multiple Users
- Chain Linked Fence with Secure Gate
- Vacant Land Ideal for Additional Building or Outside Storage
- 30 Parking Spaces



TOTAL SF	37,695 SF MOL
LAND IN ACRES	3.0952 ACRES
ZONING	I-2
GENERAL USE	Industrial
BUILT	1963-1975

www.naisullivangroup.com

NO WARRANTY OR REPRESENTATION, EXPRESS OR IMPLIED, IS MADE AS TO THE ACCURACY OF THE INFORMATION CONTAINED HEREIN, AND THE SAME IS SUBMITTED SUBJECT TO ERRORS, OMISSIONS, CHANGE OF PRICE, RENTAL OR OTHER CONDITIONS, PRIOR SALE, LEASE OR FINANCING, OR WITHDRAWAL WITHOUT NOTICE, AND OF ANY SPECIAL LISTING CONDITIONS IMPOSED BY OUR PRINCIPALS NO WARRANTIES OR REPRESENTATIONS ARE MADE AS TO THE CONDITION OF THE PROPERTY OR ANY HAZARDS CONTAINED THEREIN ARE ANY TO BE IMPLIED.

Nicole Mayes / Adrian Lillard

Nicole's Cell: 1 405 209 3992

Adrian's Cell: 1 405 227 8511

nicole@naisullivangroup.com

adrian@naisullivangroup.com

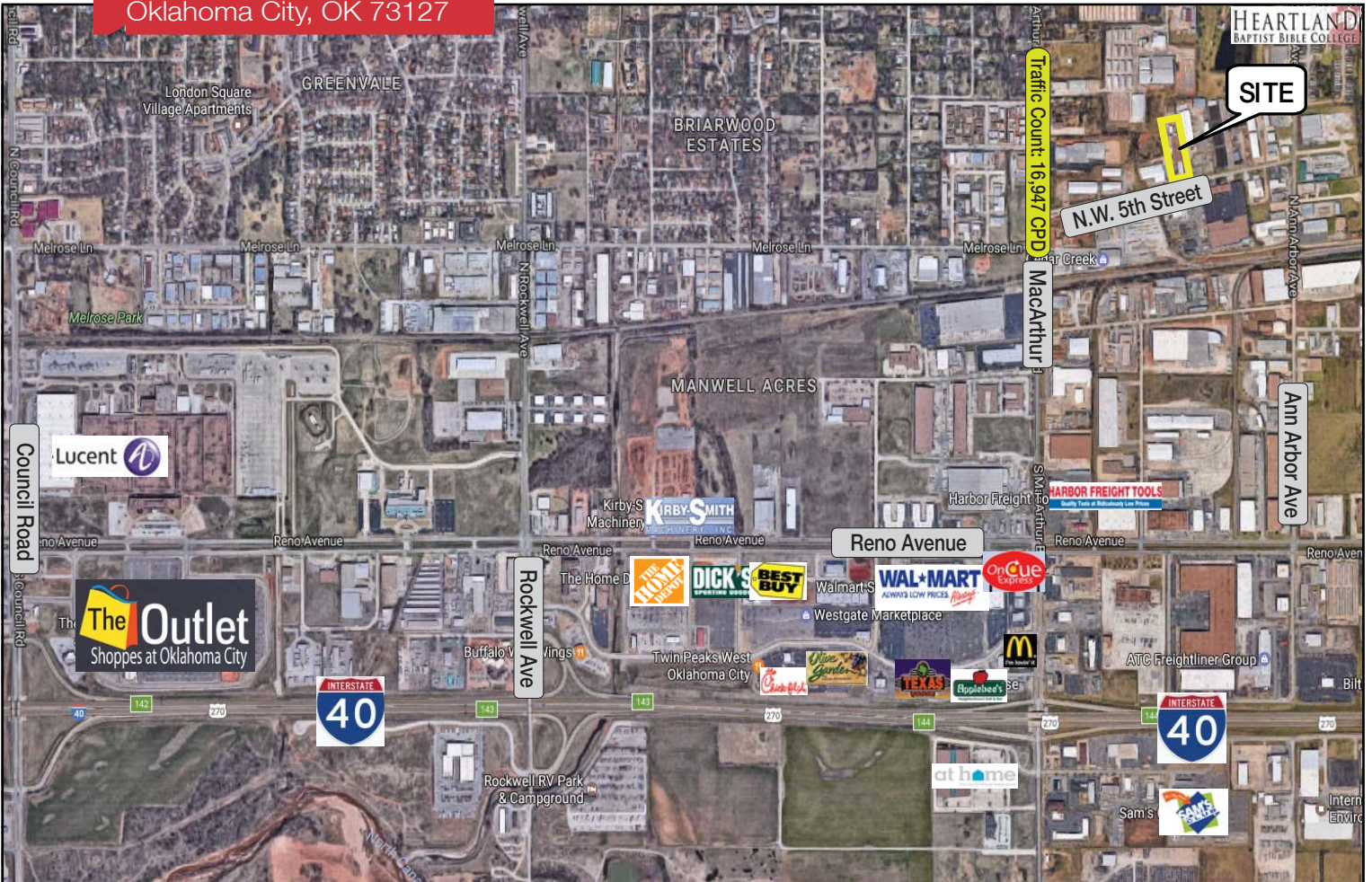
4045 N.W. 64th Street, Suite 340

Oklahoma City, Oklahoma 73116

Office: 1 405 840 0600

Fax: 1 405 840 0610

5551 N.W. 5th Street
Oklahoma City, OK 73127



LOCATION HIGHLIGHTS

- Located Between Ann Arbor & MacArthur
- 1 Mile to I-40
- 85' of Frontage on N.W. 5th Street

DEMOGRAPHICS

Population		
1 Mile: 6,871	3 Mile: 71,710	5 Mile: 192,565
Average Household Income		
1 Mile: \$26,471	3 Mile: \$39,851	5 Mile: \$40,759
Total Households		
1 Mile: 2,589	3 Mile: 28,955	5 Mile: 75,785



Nicole Mayes / Adrian Lillard

Nicole's Cell: 1 405 209 3992
Adrian's Cell: 1 405 227 8511
nicole@naisullivangroup.com
adrian@naisullivangroup.com

4045 N.W. 64th Street, Suite 340
Oklahoma City, Oklahoma 73116
Office: 1 405 840 0600
Fax: 1 405 840 0610

NAI Sullivan Group



www.naisullivangroup.com



on facebook.

Get the latest updates about OKC
Commercial Real Estate
[www.facebook.com/NicoleMayes
CommercialRealEstate](http://www.facebook.com/NicoleMayesCommercialRealEstate)