



## I-40 & Alfordale Road

El Reno, Oklahoma 73036

### PROPERTY HIGHLIGHTS

- Raw Land Adjacent to Industrial Park
- County Water Service
- 412' of Frontage on I-40
- Easy Access to I-40 via Highway 81 or Radio Road
- Great Location for Trucking Company
- Will Consider Build to Suit

TOTAL ACRES

15.253 MOL

ZONING

Canadian Open County

[www.naisullivangroup.com](http://www.naisullivangroup.com)

NO WARRANTY OR REPRESENTATION, EXPRESS OR IMPLIED, IS MADE AS TO THE ACCURACY OF THE INFORMATION CONTAINED HEREIN, AND THE SAME IS SUBMITTED SUBJECT TO ERRORS, OMISSIONS, CHANGE OF PRICE, RENTAL OR OTHER CONDITIONS, PRIOR SALE, LEASE OR FINANCING, OR WITHDRAWAL WITHOUT NOTICE, AND OF ANY SPECIAL LISTING CONDITIONS IMPOSED BY OUR PRINCIPALS NO WARRANTIES OR REPRESENTATIONS ARE MADE AS TO THE CONDITION OF THE PROPERTY OR ANY HAZARDS CONTAINED THEREIN ARE ANY TO BE IMPLIED.

**Irmon Gray**

Cell: 1 405 474 7286

[irmon@naisullivangroup.com](mailto:irmon@naisullivangroup.com)

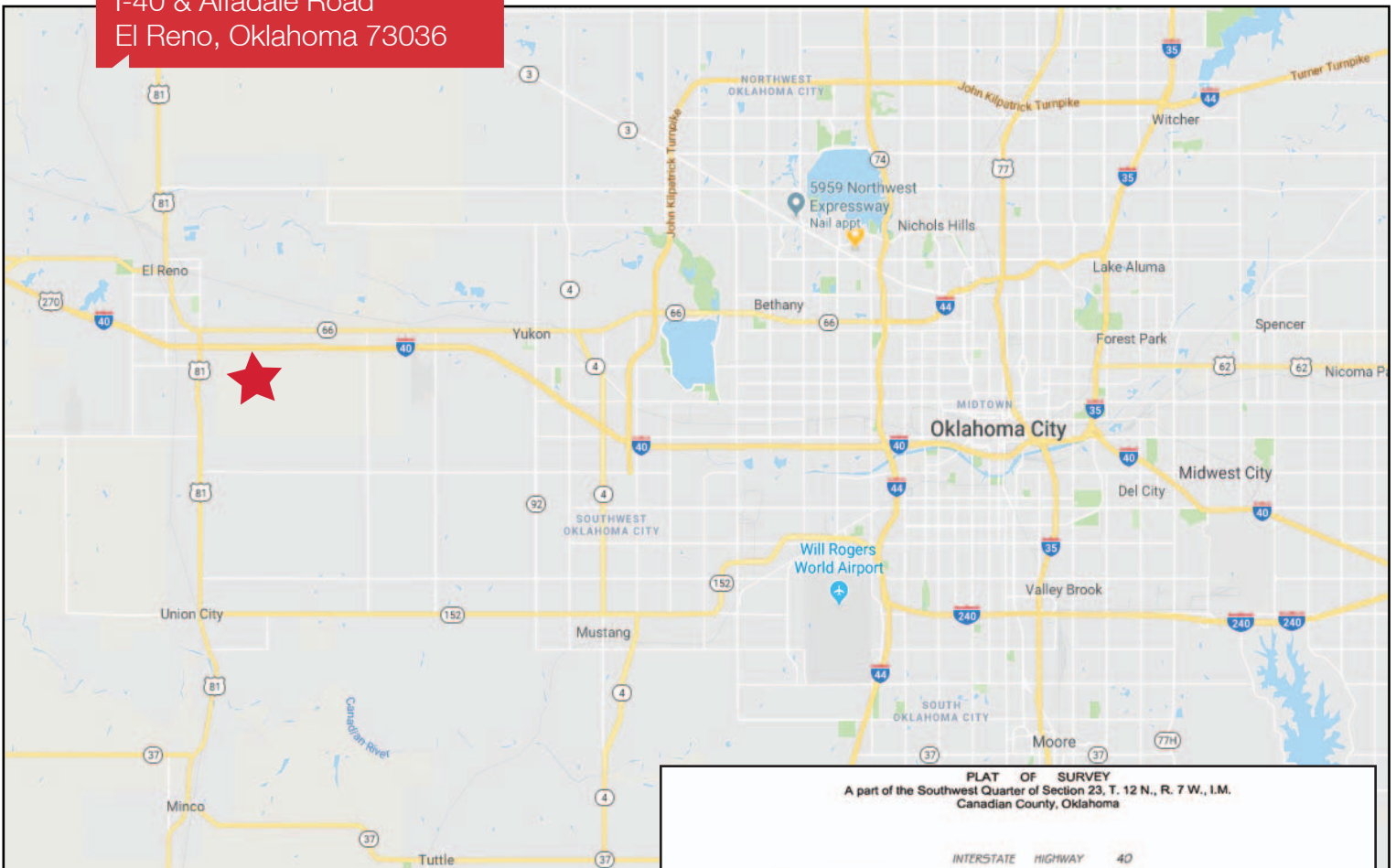
4045 N.W. 64th Street, Suite 340

Oklahoma City, Oklahoma 73116

Office: 1 405 840 0600

Fax: 1 405 840 0610

I-40 & Alfadale Road  
El Reno, Oklahoma 73036

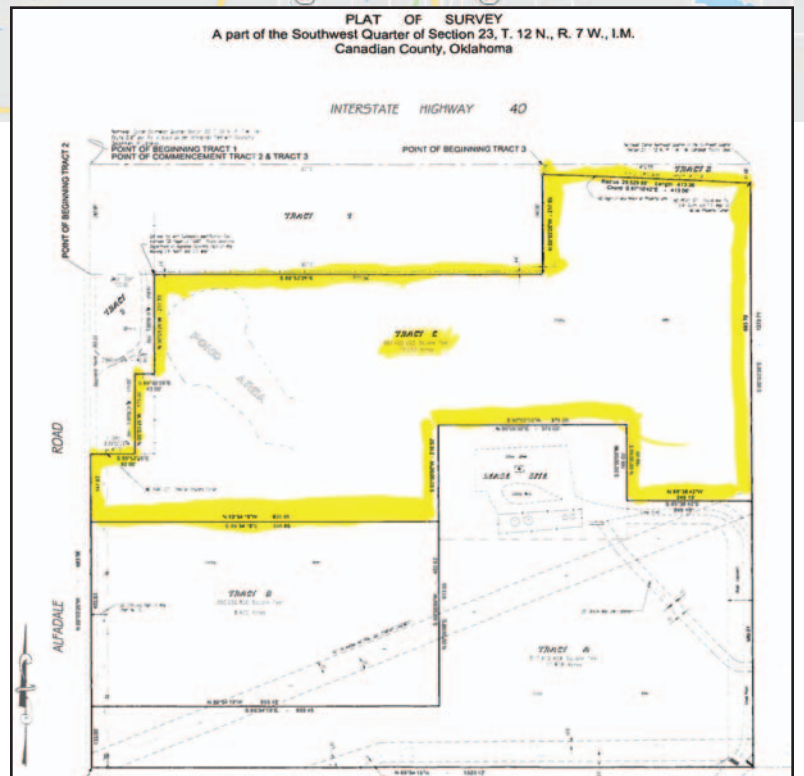


## LOCATION HIGHLIGHTS

- Growing Industrial Park Location
- Great Highway Access
- I-40 Visibility
- 25 Minutes from OKC

## DEMOGRAPHICS

| Population               |                     |                     |
|--------------------------|---------------------|---------------------|
| 1 Mile:<br>67            | 3 Mile:<br>5,893    | 5 Mile:<br>18,520   |
| Average Household Income |                     |                     |
| 1 Mile:<br>\$71,999      | 3 Mile:<br>\$56,623 | 5 Mile:<br>\$53,435 |
| Total Households         |                     |                     |
| 1 Mile:<br>25            | 3 Mile:<br>2,259    | 5 Mile:<br>6,542    |



[www.naisullivangroup.com](http://www.naisullivangroup.com)

Irmon Gray

Cell: 1 405 474 7286

irmon@naisullivangroup.com

**NA**Sullivan Group

4045 N.W. 64th Street, Suite 340

Oklahoma City, Oklahoma 73116

Office: 1 405 840 0600

Fax: 1 405 840 0610