

CLICK OR SCAN  
TO VIEW THE 3D  
TOUR



# NAI Sullivan Group

Office Space For Lease  
Suite B-Downstairs  
2,400 SF  
Available January 2019

Lease Price:  
\$12.00/SF Full Service

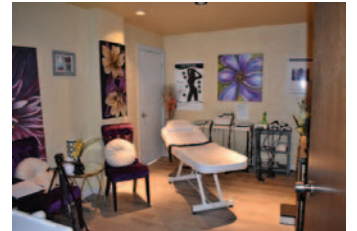
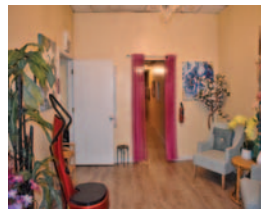
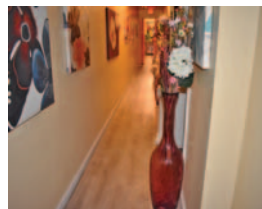


## 3013 N.W. 63rd Street, Suite B

Oklahoma City, Oklahoma 73116

### PROPERTY HIGHLIGHTS

- Downstairs Currently a Massage & Weight Loss Clinic
- 2 Story Space
- Reception/Waiting Area
- Private Restroom
- 5 Spa Rooms
- Ample Storage
- Main Entrance & Employee Door
- Signage on N.W. 63rd Street
- Multiple Open Rooms
- Restroom for Clients
- Breakroom
- Private Office with Restroom
- Includes All Utilities
- Tenant Responsible for Internet & Phone



TOTAL SF	7,800 SF MOL
SF AVAILABLE	2,400 SF
LAND IN ACRES	0.71 Acres
ZONING	C-3
BUILT	1976

[www.naisullivangroup.com](http://www.naisullivangroup.com)

NO WARRANTY OR REPRESENTATION, EXPRESS OR IMPLIED, IS MADE AS TO THE ACCURACY OF THE INFORMATION CONTAINED HEREIN, AND THE SAME IS SUBMITTED SUBJECT TO ERRORS, OMISSIONS, CHANGE OF PRICE, RENTAL OR OTHER CONDITIONS, PRIOR SALE, LEASE OR FINANCING, OR WITHDRAWAL WITHOUT NOTICE, AND OF ANY SPECIAL LISTING CONDITIONS IMPOSED BY OUR PRINCIPALS NO WARRANTIES OR REPRESENTATIONS ARE MADE AS TO THE CONDITION OF THE PROPERTY OR ANY HAZARDS CONTAINED THEREIN ARE ANY TO BE IMPLIED.

## Amanda Sullivan / Adrian Lillard

Amanda's Cell: 1 405 323 6423

Adrian's Cell: 1 405 227 8511

[amanda@naisullivangroup.com](mailto:amanda@naisullivangroup.com)

[adrian@naisullivangroup.com](mailto:adrian@naisullivangroup.com)

4045 N.W. 64th Street, Suite 340

Oklahoma City, Oklahoma 73116

Office: 1 405 840 0600

Fax: 1 405 840 0610

3013 N.W. 63rd Street  
Oklahoma City, OK 73116



## DEMOGRAPHICS

Population		
1 Mile: 10,836	3 Mile: 85,302	5 Mile: 237,343
Average Household Income		
1 Mile: \$58,273	3 Mile: \$49,691	5 Mile: \$45,578
Total Households		
1 Mile: 5,460	3 Mile: 39,398	5 Mile: 104,031

## LOCATION HIGHLIGHTS

- Dimensions: 119' x 88'
- Frontage: 88' on 63rd Street
- Visible from N.W. 63rd Street
- Close to Baptist Hospital
- Easy Access to Hefner Parkway & N.W. Expressway
- Numerous Restaurants, Banks & Shopping Nearby



Amanda Sullivan  
Adrian Lillard

Amanda's Cell: 1 405 323 6423  
Adrian's Cell: 1 405 227 8511  
amanda@naisullivangroup.com  
adrian@naisullivangroup.com

**NAI Sullivan Group**



[www.naisullivangroup.com](http://www.naisullivangroup.com)

on facebook.

Get the latest updates about OKC Commercial Real Estate  
[www.facebook.com/OKCCRE/](http://www.facebook.com/OKCCRE/)