

Duplex For Sale

2,398 SF on 0.19 Acres

Sales Price: \$192,500

**SOLD AS A PACKAGE WITH
6417 & 6419 N. PENIEL
PACKAGE PRICE: \$369,400**



6409 & 6411 N. Peniel Avenue

Oklahoma City, Oklahoma 73132

PROPERTY HIGHLIGHTS

- Completely Remodeled
- New Appliances
- 2 Car Garage with Electric Door
- Big Fenced in Back Yard
- Approximately 1,188 SF Upstairs with Bedrooms
- 1,210 SF Down Stairs Kitchen & Living Room
- 2 Bedrooms & 1 1/2 Bathrooms



TOTAL SF	2,398 SF MOL
LAND IN ACRES	0.19 ACRES
ZONING	R-4
BUILT	1971

www.naisullivangroup.com

NO WARRANTY OR REPRESENTATION, EXPRESS OR IMPLIED, IS MADE AS TO THE ACCURACY OF THE INFORMATION CONTAINED HEREIN, AND THE SAME IS SUBMITTED SUBJECT TO ERRORS, OMISSIONS, CHANGE OF PRICE, RENTAL OR OTHER CONDITIONS, PRIOR SALE, LEASE OR FINANCING, OR WITHDRAWAL WITHOUT NOTICE, AND OF ANY SPECIAL LISTING CONDITIONS IMPOSED BY OUR PRINCIPALS NO WARRANTIES OR REPRESENTATIONS ARE MADE AS TO THE CONDITION OF THE PROPERTY OR ANY HAZARDS CONTAINED THEREIN ARE ANY TO BE IMPLIED.

Nicole Mayes / Adrian Lillard

Nicole's Cell: 1 405 209 3992

Adrian's Cell: 1 405 227 8511

nicole@naisullivangroup.com

adrian@naisullivangroup.com

4045 N.W. 64th Street, Suite 340

Oklahoma City, Oklahoma 73116

Office: 1 405 840 0600

Fax: 1 405 840 0610

Duplex For Sale

2,044 SF on 0.19 Acres

Sales Price: \$176,900

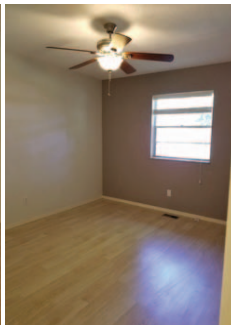
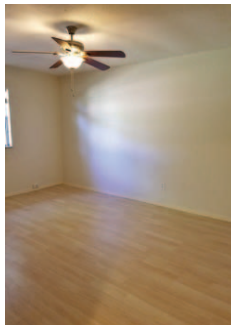
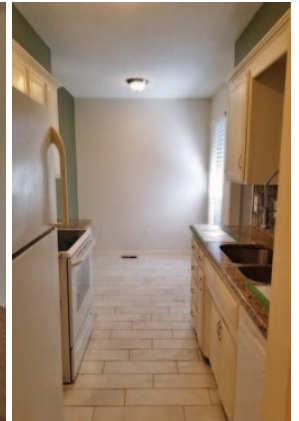
**SOLD AS A PACKAGE WITH
6409 & 6411 N. PENIEL
PACKAGE PRICE: \$369,400**



6417 & 6419 N. Peniel Avenue
Oklahoma City, Oklahoma 73132

PROPERTY HIGHLIGHTS

- Completely Remodeled
- New Appliances
- 2 Car Garage with Electric Door
- Big Fenced in Back Yard
- Approximately 1,022 SF Each Unit
- 2 Bedrooms & 1 1/2 Bathrooms



TOTAL SF	2,044 SF MOL
LAND IN ACRES	0.19 ACRES
ZONING	R-4
BUILT	1973

www.naisullivangroup.com

NO WARRANTY OR REPRESENTATION, EXPRESS OR IMPLIED, IS MADE AS TO THE ACCURACY OF THE INFORMATION CONTAINED HEREIN, AND THE SAME IS SUBMITTED SUBJECT TO ERRORS, OMISSIONS, CHANGE OF PRICE, RENTAL OR OTHER CONDITIONS, PRIOR SALE, LEASE OR FINANCING, OR WITHDRAWAL WITHOUT NOTICE, AND OF ANY SPECIAL LISTING CONDITIONS IMPOSED BY OUR PRINCIPALS NO WARRANTIES OR REPRESENTATIONS ARE MADE AS TO THE CONDITION OF THE PROPERTY OR ANY HAZARDS CONTAINED THEREIN ARE ANY TO BE IMPLIED.

Nicole Mayes / Adrian Lillard

Nicole's Cell: 1 405 209 3992

Adrian's Cell: 1 405 227 8511

nicole@naisullivangroup.com

adrian@naisullivangroup.com

4045 N.W. 64th Street, Suite 340

Oklahoma City, Oklahoma 73116

Office: 1 405 840 0600

Fax: 1 405 840 0610



DEMOGRAPHICS

Population		
1 Mile: 12,773	3 Mile: 83,906	5 Mile: 219,204
Average Household Income		
1 Mile: \$54,498	3 Mile: \$56,365	5 Mile: \$71,395
Total Households		
1 Mile: 4,982	3 Mile: 35,266	5 Mile: 93,668

LOCATION HIGHLIGHTS

- 6409 & 6411 Dimensions: 66' x 123'
- 6417 & 6419 Dimensions: 70' x 120'
- Putnam City School District
- Between N.W. 63rd Street & Wilshire
- High Rental Occupancy in Neighborhood
- On Bus Route for School & Public



Nicole Mayes / Adrian Lillard

Nicole's Cell: 1 405 209 3992
 Adrian's Cell: 1 405 227 8511
 nicole@naisullivangroup.com
 adrian@naisullivangroup.com

4045 N.W. 64th Street, Suite 340
 Oklahoma City, Oklahoma 73116
 Office: 1 405 840 0600
 Fax: 1 405 840 0610

NAISullivan Group



www.naisullivangroup.com
www.naisullivangroup.com/okccre

find Us

on facebook

Get the latest updates about OKC Commercial Real Estate
www.facebook.com/NicoleMayesCommercialRealEstate