



3131 N. MacArthur Boulevard

Bethany, Oklahoma 73008

PROPERTY HIGHLIGHTS

- Water & Sewer to Site
- Developed with 36,356 SF Office Building
- Building Will Most Likely Need to be Removed
- Land Value Sale Only

LAND IN ACRES	1.7 MOL
TOTAL SF	36,356 SF
ZONING	CG
GENERAL USE	Office
TAXES	\$6,200

www.naisullivangroup.com

NO WARRANTY OR REPRESENTATION, EXPRESS OR IMPLIED, IS MADE AS TO THE ACCURACY OF THE INFORMATION CONTAINED HEREIN, AND THE SAME IS SUBMITTED SUBJECT TO ERRORS, OMISSIONS, CHANGE OF PRICE, RENTAL OR OTHER CONDITIONS, PRIOR SALE, LEASE OR FINANCING, OR WITHDRAWAL WITHOUT NOTICE, AND OF ANY SPECIAL LISTING CONDITIONS IMPOSED BY OUR PRINCIPALS NO WARRANTIES OR REPRESENTATIONS ARE MADE AS TO THE CONDITION OF THE PROPERTY OR ANY HAZARDS CONTAINED THEREIN ARE ANY TO BE IMPLIED.

Bob Sullivan, CCIM / Amanda Sullivan

Bob's Cell: 1 405 641 9798

Amanda's Cell: 1 405 323 6423

rsullivan@ccim.net

amanda@naisullivangroup.com

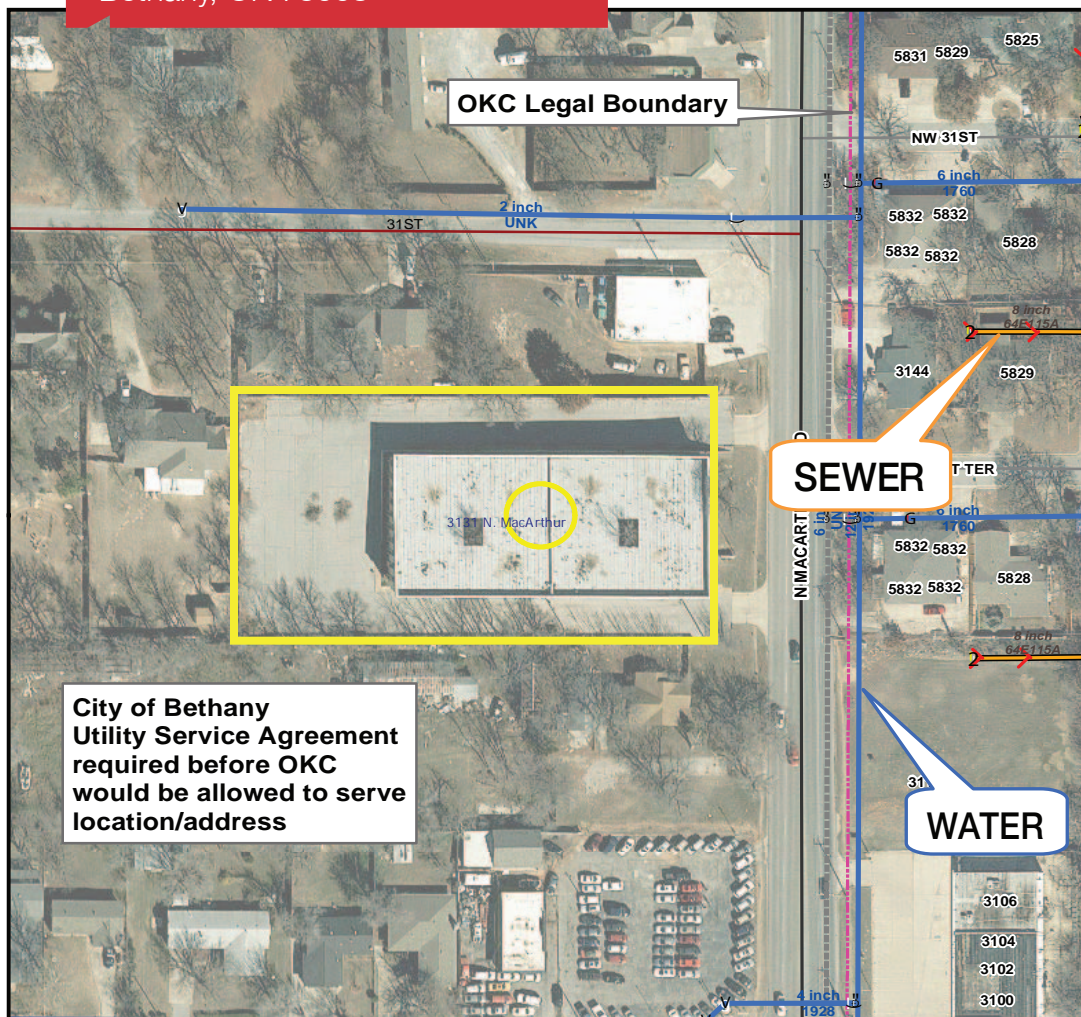
4045 N.W. 64th Street, Suite 340

Oklahoma City, Oklahoma 73116

Office: 1 405 840 0600

Fax: 1 405 840 0610

3131 N. MacArthur Boulevard
Bethany, OK 73008



DEMOGRAPHICS

Population		
1 Mile: 15,713	3 Mile: 97,360	5 Mile: 189,061
Average Household Income		
1 Mile: \$42,157	3 Mile: \$41,618	5 Mile: \$44,388
Total Households		
1 Mile: 6,275	3 Mile: 40,448	5 Mile: 78,627

LOCATION HIGHLIGHTS

- Dimensions: 196' x 380'
- Frontage: 196' on MacArthur Boulevard
- Developed Area of Bethany



Bob Sullivan, CCIM

Amanda Sullivan

Bob's Cell: 1 405 641 9798

Amanda's Cell: 1 405 323 6423

rsullivan@ccim.net

amanda@naisullivangroup.com

NAI Sullivan Group

www.naisullivangroup.com

4045 N.W. 64th Street, Suite 340
Oklahoma City, Oklahoma 73116
Office: 1 405 840 0600
Fax: 1 405 840 0610