

# KULIN RETIREMENT HOMES

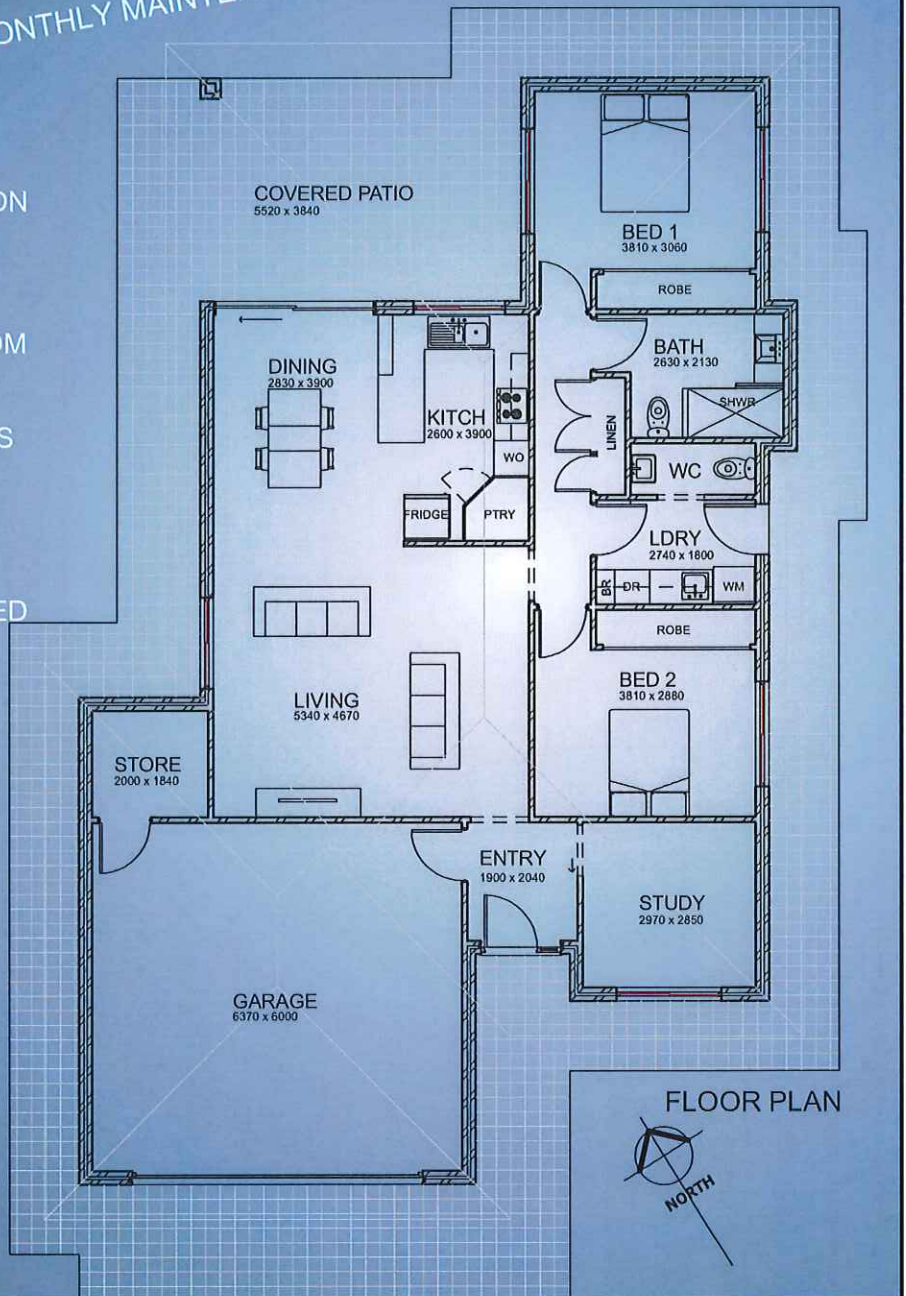
offers

## 2 BED HOMES PLUS STUDY

**ONLY \$150,000**

PLUS A MONTHLY MAINTENANCE FEE

- ▲ 110M<sup>2</sup> INTERNAL FLOOR AREA PLUS GARAGE & STORE
- ▲ BRICK VENEER CONSTRUCTION
- ▲ COLORBOND ROOF
- ▲ 2 WC'S
- ▲ SUPPORT RAILS TO BATHROOM
- ▲ SEPARATE LAUNDRY
- ▲ BUILT IN ROBES IN BEDROOMS
- ▲ CEILING FANS IN BEDROOMS
- ▲ REVERSE CYCLE AIR-CON TO LIVING AREA
- ▲ DOUBLE REMOTE CONTROLLED GARAGE
- ▲ LINEN CUPBOARD
- ▲ PAINT
- ▲ FLOOR COVERINGS
- ▲ WINDOW TREATMENTS
- ▲ SIDE & REAR FENCING
- ▲ CLOTHES LINE
- ▲ MAINTAINED FRONT LANDSCAPING
- ▲ COVERED OUTDOOR AREA UNDER MAIN ROOF



FOR MORE INFORMATION  
CONTACT ANNETTE LEWIS  
KULIN RESOURCE CENTRE  
(08) 9880 1021  
resourcecentre@kulin.wa.gov.au

Proudly Supported by:



ROYALTIES  
FOR REGIONS



Kulin Community Bank<sup>®</sup> Branch  Bendigo Bank