



Moving Solano Forward Phase II

Tasks: 2.1, 2.3 and 5.2
Business Park Boundaries for
Website Development


Date: August 3, 2016

Robert Eyler, Economic Forensics
Audrey Taylor, Chabin Concepts
Don Schjeldahl, DSG Advisors
Debbie Kern, KMA

Mare Island - Lennar Mare Island



 Lennar Mare Island

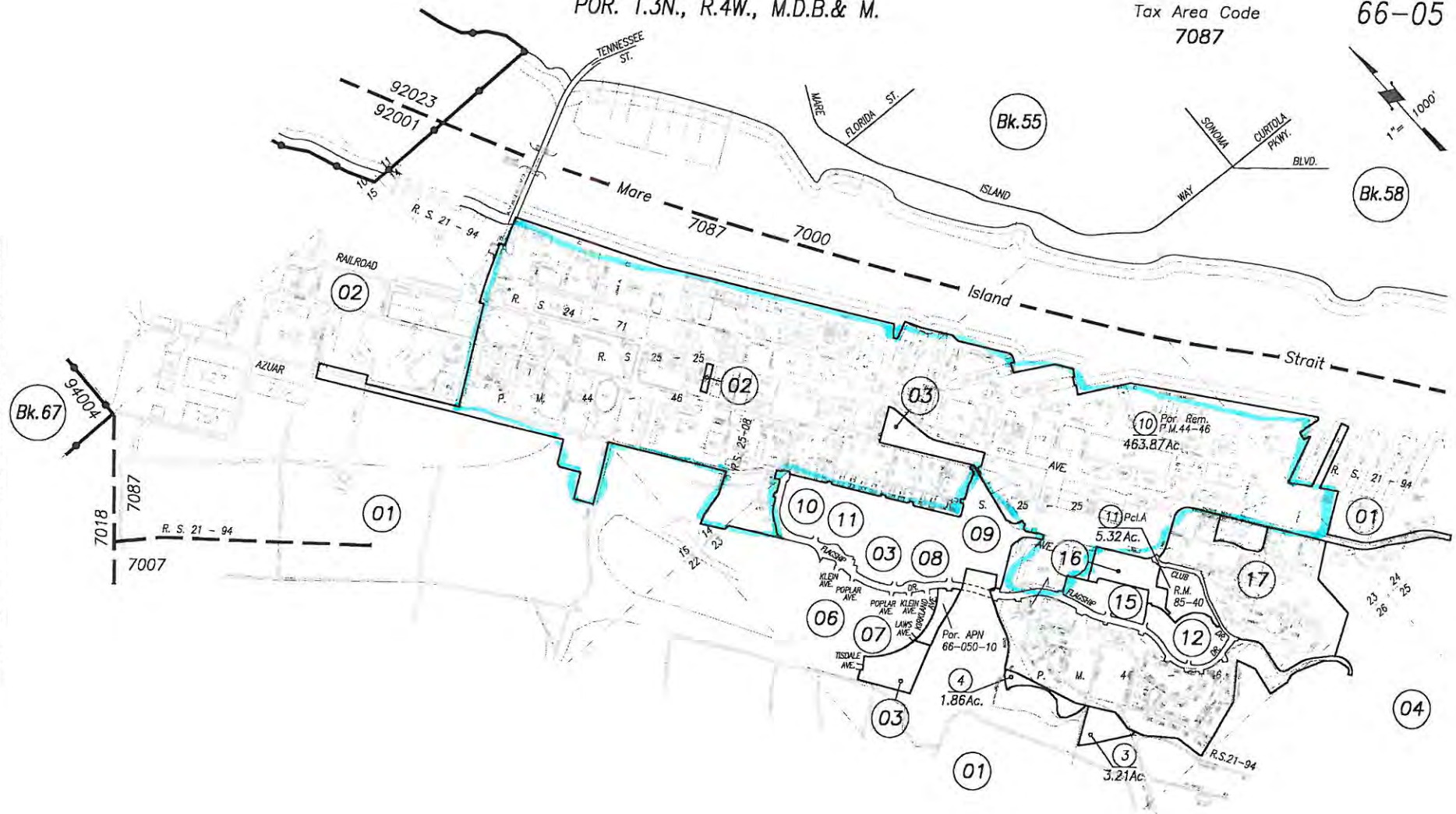
 City of Vallejo

POR. T.3N., R.4W., M.D.B.& M.

Tax Area Code
7087

66-05

Copyright © 1996, Solano County Assessor/Recorder, All rights Reserved



Coral Sea Village South Unit 3, R.M. Bk. 85 Pg. 40
 Assessor's Block Numbers Shown in Ellipses, Assessor's Parcel Numbers Shown in Circles

050-10 CHg.(Dd)	6-08-10	Cr
Per. to Pg. 3		
050-10 CHg. (Dd)	6-08-10	Pd
Per. to Pg. 17 (Rm)	3-10-10	JS
REVISION	DATE	BY

NOTE: This map is for assessment purposes only. It is not intended to define legal boundary rights or imply compliance with land division laws.

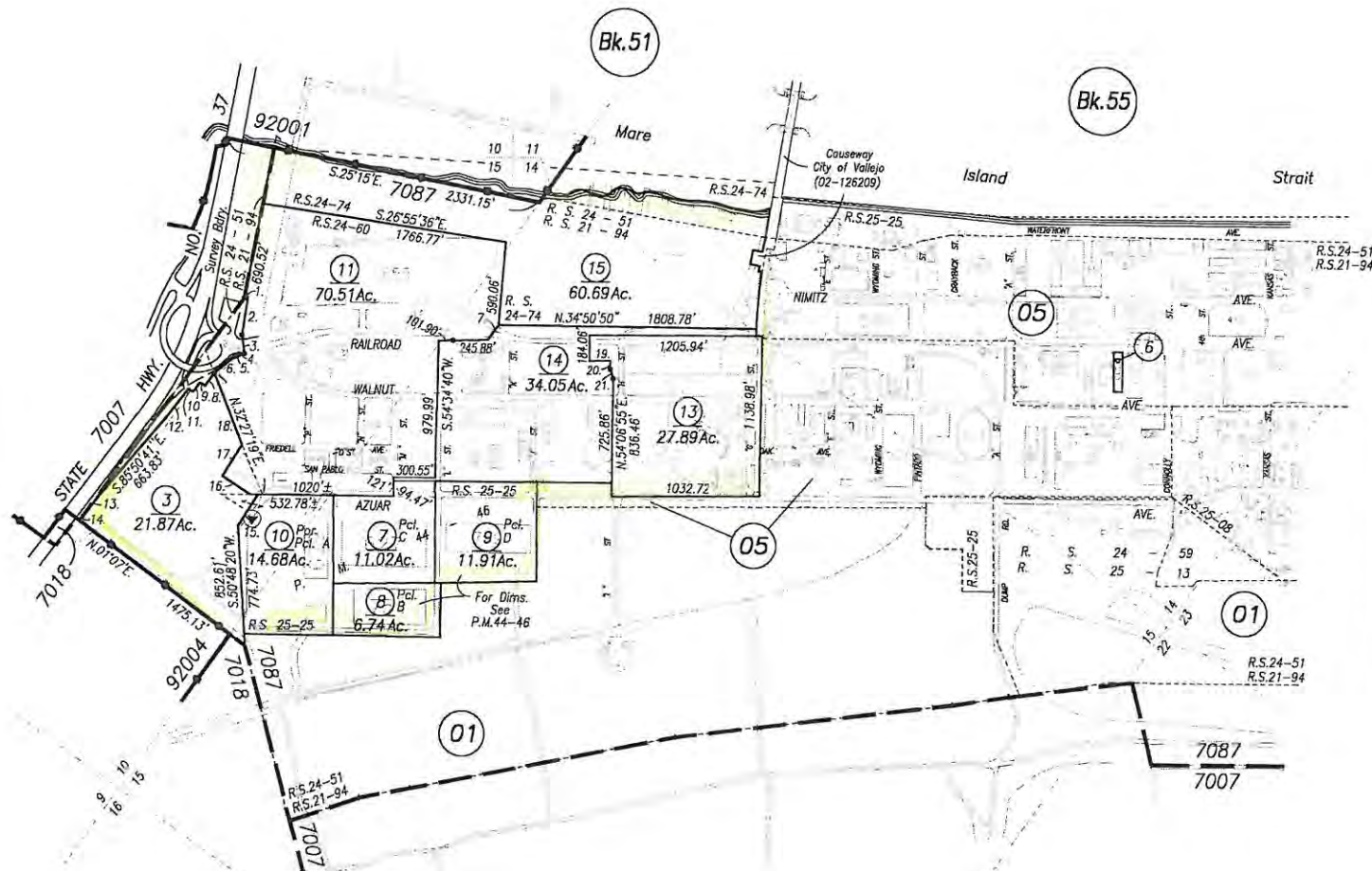
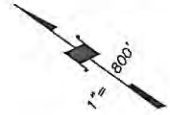
CITY OF VALLEJO
Assessor's Map Bk. 66 Pg. 05
County of Solano, Calif.

11-12

POR. SEC. 10, 14 & 15, T.3N., R.4W., M.D.B.& M.

Tax Area Code
7087

66-02



1.	N.24°25'53"W.	19.61'
2.	N.63°08'30"E.	270.93'
3.	N.46°31'24"E.	132.99'
4.	S.43°47'52"E.	38.22'
5.	S.62°35'11"E.	29.57'
6.	S.74°33'39"E.	114.23'
7.	N.88°33'28"W.	132.45'
8.	S.89°56'30"E.	134.03'
9.	S.0°03'30"W.	43.00'
10.	N.89°56'30"W.	85.00'
11.	S.0°03'30"W.	37.94'
12.	N.89°56'30"W.	263.49'
13.	S.86°56'30"E.	150.46'
14.	S.87°41'52"E.	8.64'
15.	S.86°24'27"W.	265.25'
16.	N.57°08'08"W.	235±'
17.	S.86°37'30"W.	239.96'
18.	S.29°28'50"W.	490±'
19.	N.37°34'49"W.	148.39'
20.	N.54°14'14"E.	62.11'
21.	N.36°44'23"E.	70.38'

020-14,15 (Dd)	5-13-11	Cr
020-11 thru 13 (Dm)	1-3-07	JS
020-03,10 Chg. (Dd)	1-06-05	JS
S.B.E. 04-008	12-23-03	Pd
REVISION	DATE	BY

NOTE: This map is for assessment purposes only. It is not intended to define legal boundary rights or imply compliance with land division laws.

CITY OF VALLEJO
Assessor's Map Bk. 66 Pg. 02
County of Solano, Calif.

(12-13)

Assessor's Block Numbers Shown in Ellipses, Assessor's Parcel Numbers Shown in Circles

Benicia Business Park



64 77 201



Green Valley Corporate Park



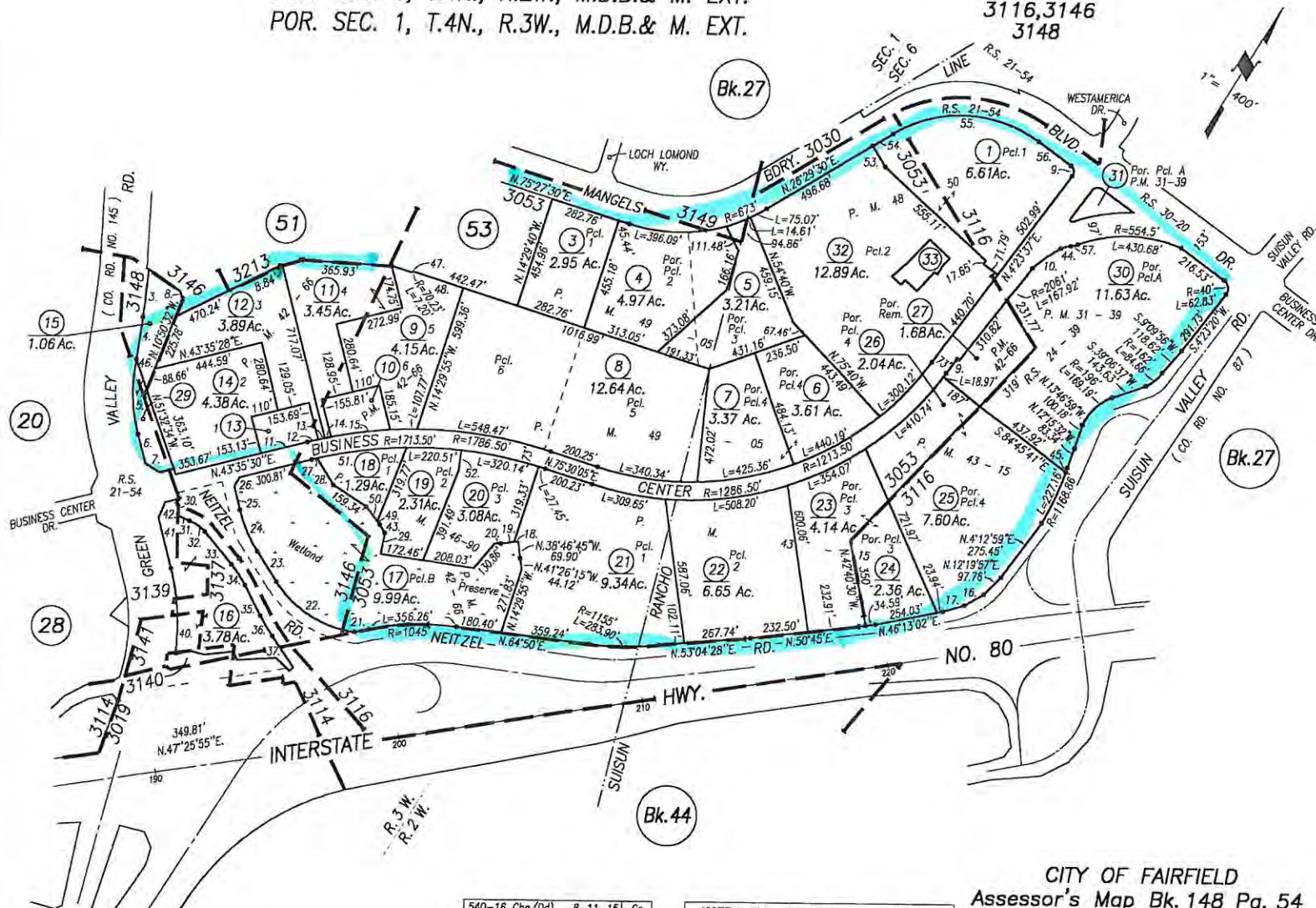
POR. LOT 37, SUISUN RANCHO
 POR. SEC. 6, T.4N., R.2W., M.D.B. & M. EXT.
 POR. SEC. 1, T.4N., R.3W., M.D.B. & M. EXT.

Green Valley
 Corporate
 Park

Tax Area Code
 3019,3053
 3116,3146
 3148

148-54

1.	S.31°45'00"E.	1.11'
2.	S.67°35'00"W.	22.30'
3.	R=3103'	L=195.30'
4.	N.23°42'00"W.	202.00'
5.	R=697'	L=276.25'
6.	N.45°24'30"W.	121.00'
7.	N.89°11'41"E.	67.18'
8.	N.51°07'32"W.	31.50'
9.	N.4°23'37"E.	71.17±
10.	R=565.50'	L=134.60'
11.	N.43°35'30"E.	194.31'
12.	R=1786.50'	L=44.75'
13.	R=1786.50'	L=26.46'
14.	R=1786.50'	L=26.58'
15.	R=1786.50'	L=240.92'
16.	N.27°24'18"E.	89.85'
17.	N.41°37'18"E.	89.77'
18.	N.50°04'09"E.	16.90'
19.	N.50°04'09"E.	53.94'
20.	N.59°04'11"E.	23.89'
21.	N.45°04'37"E.	45.22'
22.	R=445'	L=402.24'
23.	N.64°30'36"W.	143.12'
24.	R=578'	L=182.61'
25.	N.45°24'30"W.	99.00'
26.	N.01°24'30"W.	41.72'
27.	R=1713.50'	L=22.06'
28.	N.63°54'15"W.	124.99'
29.	N.21°46'07"E.	86.82'
30.	N.27°13'00"W.	92.68'
31.	N.81°51'35"E.	54.64'
32.	R=172.36'	L=79.72'
33.	N.71°38'25"W.	171.80'
34.	R=460.01'	L=99.55'
35.	N.59°14'25"W.	139.40'
36.	R=790.01'	L=94.45'
37.	N.65°05'25"W.	151±
38.		
39.		
40.	R=903'	L=384.89±
41.	N.45°24'30"W.	210.00'
42.	N.09°42'20"W.	68.60'
43.	N.63°25'53"W.	38.75'
44.	R=100'	L=41.52'
45.	R=1168.86'	L=19.27'
46.	N.51°32'34"W.	135.69'
47.	N.75°30'20"E.	2.52'
48.	N.75°30'20"E.	212.62'
49.	N.69°43'18"W.	17.05'
50.	N.69°43'18"W.	73.25'
51.	R=1713.50'	L=364.15'
52.	N.26°07'21"W.	80.93'
53.	N.63°19'19"W.	92.99'
54.	N.26°29'30"E.	96.98'
55.	R=527'	L=624.56'
56.	N.85°36'23"W.	160.36'
57.	R=100'	L=29.16'
58.		



540-16 Chg.(Dd)	8-11-15	Cr
540-04,05 Chg.(Lia)	1-30-15	DV
540-32,33 (Dd)	5-23-13	Cr
R.S. 30-20	6-15-11	Cr
REVISION	DATE	BY

NOTE: This map is for assessment purposes only. It is not intended to define legal boundary rights or imply compliance with land division laws.

CITY OF FAIRFIELD
 Assessor's Map Bk. 148 Pg. 54
 County of Solano, Calif.

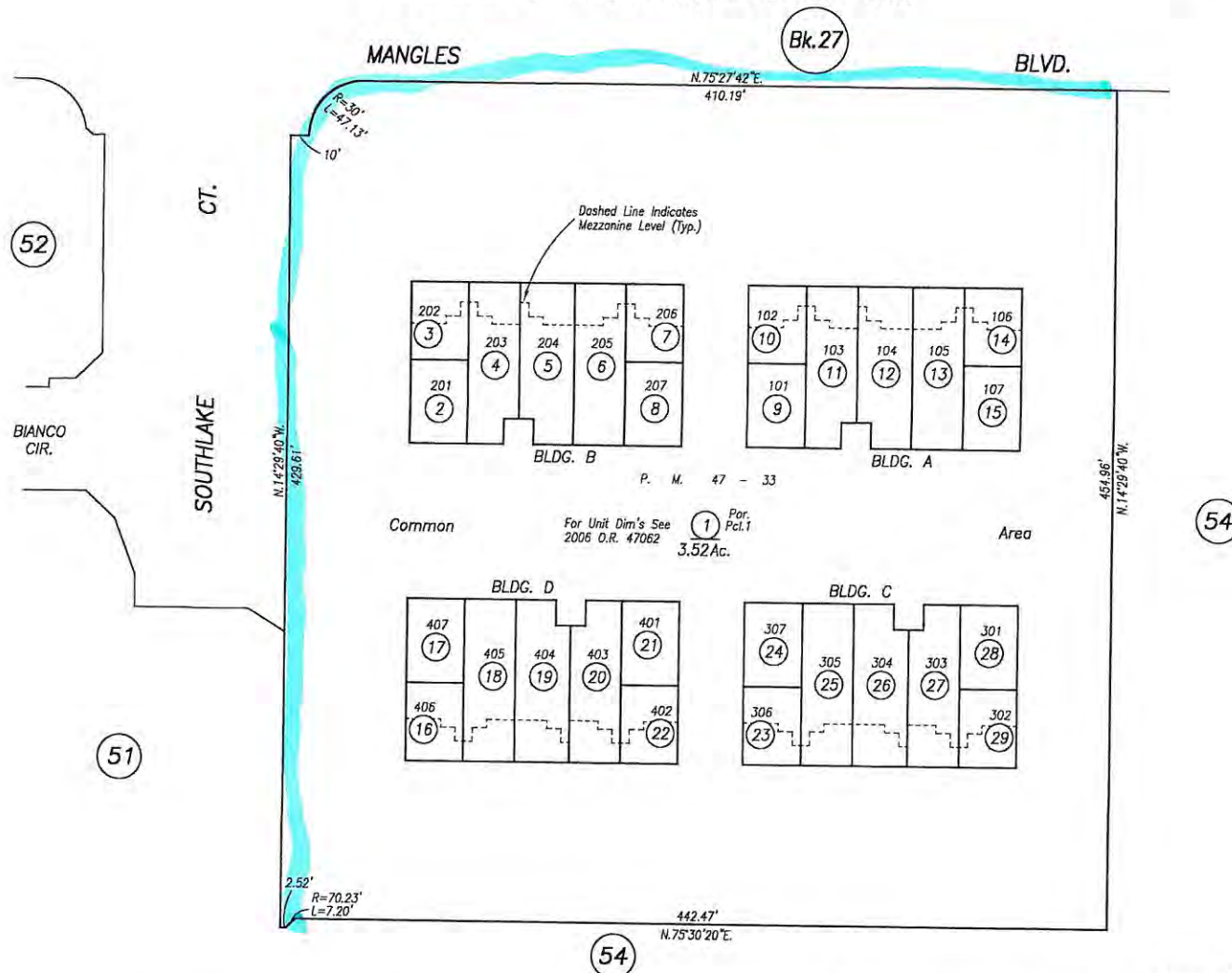
16-17

Assessor's Block Numbers Shown in Ellipses, Assessor's Parcel Numbers Shown in Circles

POR. LOT 37, SUISUN RANCHO
POR. SEC. 1, T.4N., R.3W., M.D.B. & M. EXT.

Tax Area Code
3053

148-53



Venture Commerce Center, (Condo.) R.D. 2006-47062

Assessor's Block Numbers Shown in Ellipses, Assessor's Parcel Numbers Shown in Circles

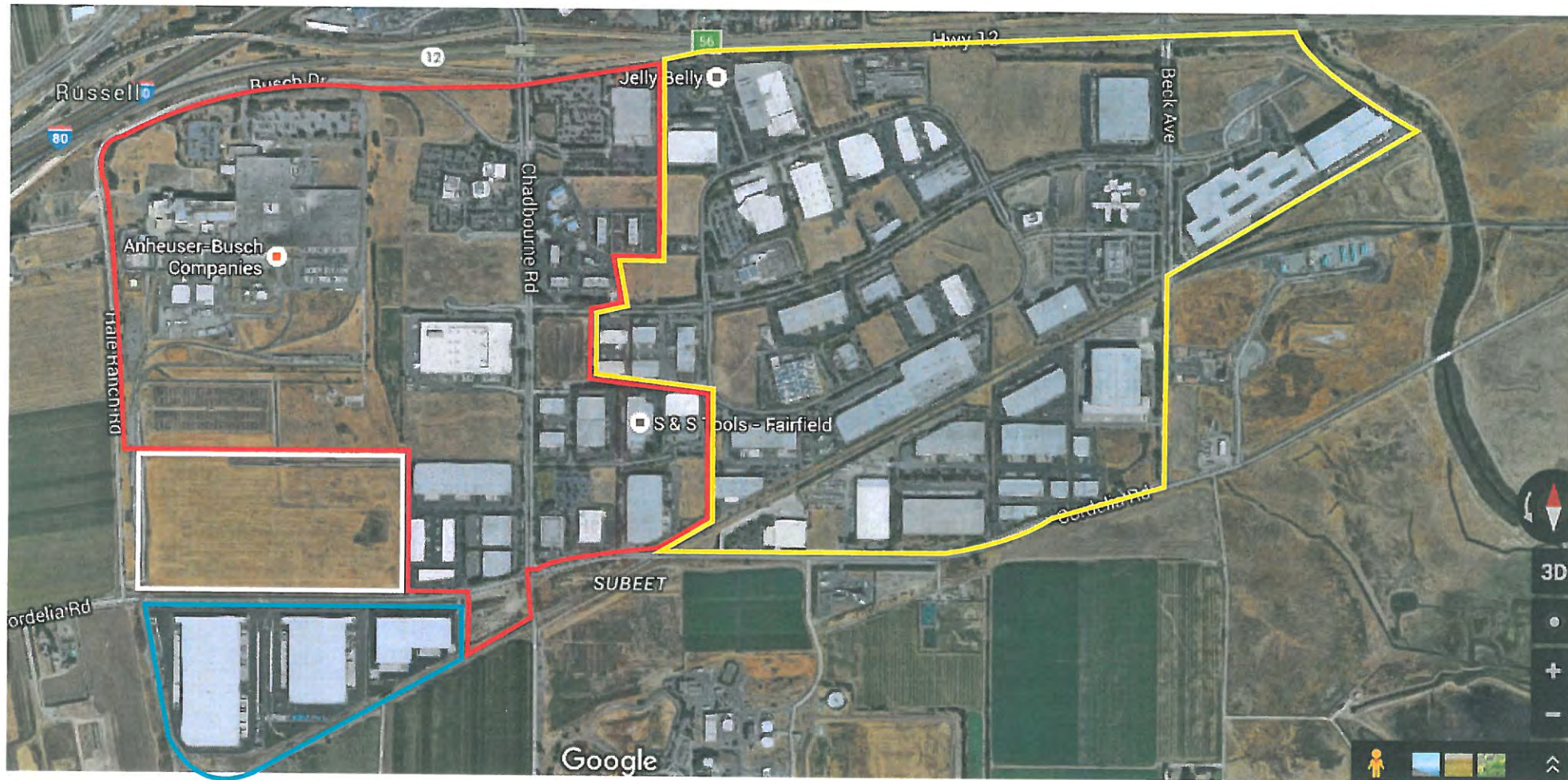
REMAP from Bk. 45 12-31-10	JS
REVISION	DATE BY

NOTE: This map is for assessment purposes only. It is not intended to define legal boundary rights or imply compliance with land division laws.

CITY OF FAIRFIELD
Assessor's Map Bk. 148 Pg. 53
County of Solano, Calif.

11-12

- | | |
|--|---|
| Busch Corporate Park | Solano Logistics Center |
| Solano Business Park | Gateway 80 Business Park |



*Solano
Business
Park*

POR. LOT 37 SUISUN RANCHO
POR. SEC'S 34 & 35, T.5N., R.2W., M.D.B. & M.

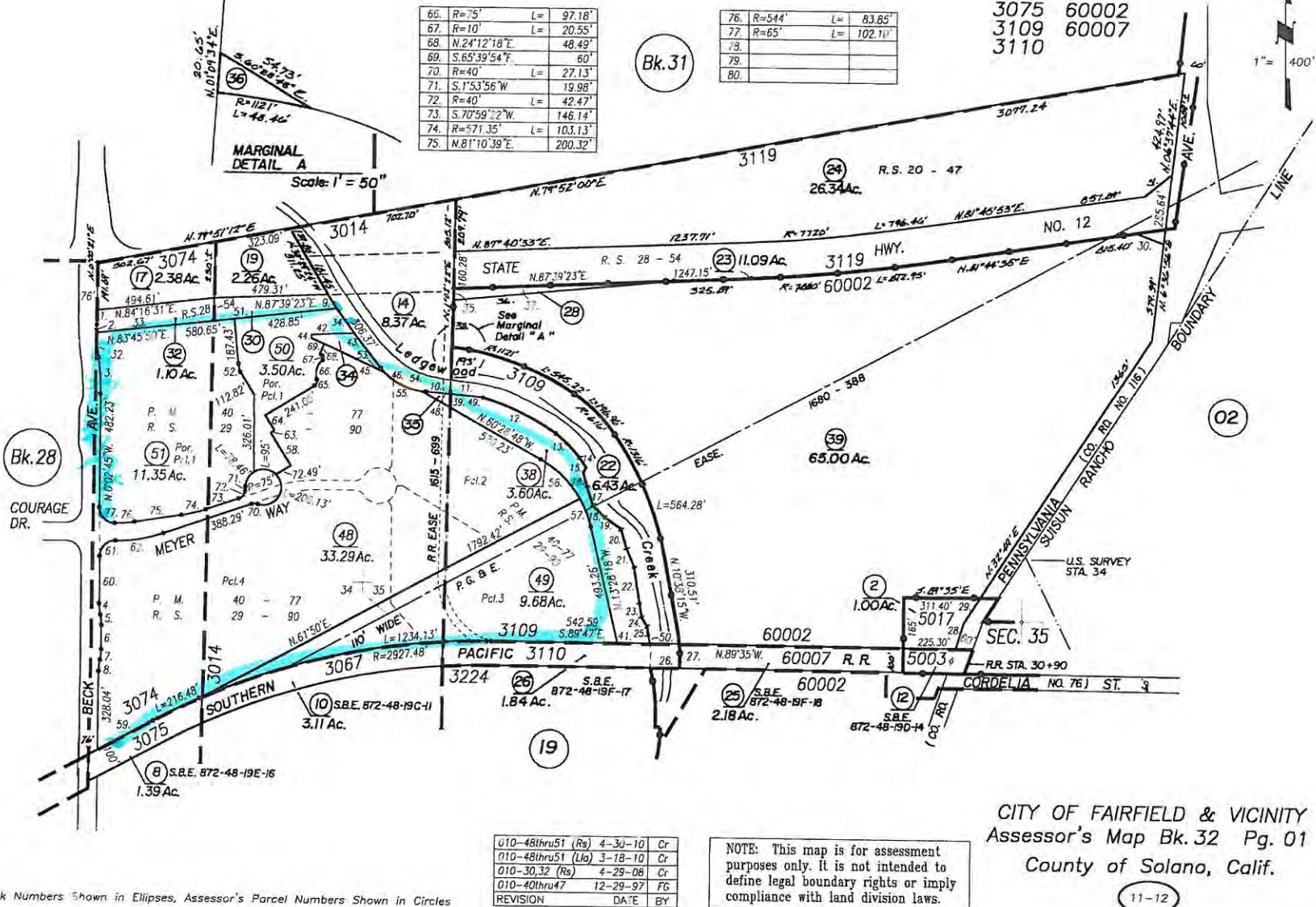
Tax Area Code

3014 3119
3067 5003
3074 5017
3075 60002
3109 60007
3110

32-01

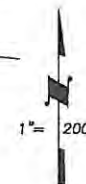
1.	N.0°00'20"E.	61.44
2.	R=342'	L=76.18'
3.	R=1038'	L=150.39'
4.	R=210'	L=47.06'
5.	R=190'	L=42.58'
6.	N.1°02'45"W.	100'
7.	R=190'	L=42.58'
8.	R=210'	L=47.06'
9.	S.30°29'06"E.	64.98'
10.	S.85°E.	117.21'
11.	S.85°07'45"E.	140.00'
12.	R=145'	L=342.6'
13.	R=140'	L=140.68'
14.	R=1140'	L=42.86'
15.	S.25°01'04"W.	24.87'
16.	S.12°53'37"E.	58.50'
17.	S.17°48'37"E.	78.42'
18.	S.45°16'24"E.	72.96'
19.	S.54°36'45"E.	86.25'
20.	S.16°12'05"E.	82.24'
21.	S.21°04'21"E.	83.92'
22.	S.9°22'37"E.	152.03'
23.	S.9°29'04"E.	56.01'
24.	S.34°15'55"E.	54.63'
25.	S.10°30'27"E.	44.51'
26.	S.89°47"E.	122.62'
27.	L=416'	L=135.66'
28.	S.23°W.	91.80'
29.	N.32°45'E.	95.10'
30.	N.69°15'11"W.	92.67'
31.	N.51°55'19"E.	134.11'
32.	R=996.37'	L=104.08'
33.	N.83°45'51"E.	495.5'
34.	S.37°04'55"E.	128.97'
35.	S.1°02'44"W.	24.86'
36.	N.86°07'14"E.	923.35'
37.	S.87°39'37"W.	921.53'
38.	N.1°02'22"E.	196.13'
39.	S.1°01'46"W.	53.00'
40.		
41.	N.89°39'12"W.	148.55'
42.	N.87°50'03"E.	185.02'
43.	S.36°57'07"E.	176.37'
44.	N.2°20'45"W.	14.89'
45.	N.65°39'54"W.	276.51'
46.	R=260'	L=217.45'
47.	S.37°04'55"E.	128.96'
48.	S.84°52'12"E.	117.21'
49.	S.84°59'57"E.	140.00'
50.	R=295'	L=25.14'
51.	N.83°45'50"E.	514.96'
52.	R=153'	L=36.91'
53.	R=260'	L=25.50'
54.	R=260'	L=9.06'
55.	R=260'	L=182.71'
56.	R=440'	L=235.01'
57.	R=440'	L=125.99'
58.	N.32°W.	162.12'
59.	S.61°49'32"W.	261.62'
60.	N.0°02'45"W.	195'
61.	R=65'	L=102.20'
62.	R=619.47'	L=205.66'
63.	N.59°E.	15.51'
64.	S.32°E.	70.87'
65.	R=22.26'	L=29.83'

Assessor's Block Numbers Shown in Ellipses, Assessor's Parcel Numbers Shown in Circles



Tax Area Code
3076
3152

28-79



Copyright © 1996, Solano County Assessor/Recorder, All rights Reserved



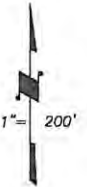
CITY OF FAIRFIELD
Assessor's Map Bk.28 Pg. 79
County of Solano, Calif.

09-10

POR. LOT 37, SUISUN RANCHO
 POR. SEC'S 33 & 34, T.5N., R.2W., M. D. B. & M. EXT.

Tax Area Code
 3050
 3055
 3090
 3152

28-75



1.	N.89°58'27"E.	60.10'
2.	R=45'	L=70.69'
3.	N.2°09'44"W.	41.28'
4.	NORTH	8.46'
5.	N.42°50'16"E.	21.21'
6.	N.0°01'11"W.	57.33'
7.	R=67.50'	L=53.64'
8.		
9.	N.15°59'35"E.	73.77'
10.	N.87°50'16"E.	26.98'
11.	N.2°09'44"W.	90.00'
12.	N.42°50'16"E.	42.42'
13.	N.87°50'16"E.	11.98'
14.	R=131'	L=84.18'
15.	N.58°05'42"E.	33.10'



Lewis Pierce Subd. Unit No. 1, R.M. Bk.3 Pg. 7

Assessor's Block Numbers Shown in Ellipses, Assessor's Parcel Numbers Shown in Circles

RS 28-54	4-29-08	Cr
750-31 (Chg.Dg)	11-18-05	JS
750-31 (Pm)	7-7-04	SE
REVISION	DATE	BY

NOTE: This map is for assessment purposes only. It is not intended to define legal boundary rights or imply compliance with land division laws.

CITY OF FAIRFIELD
 Assessor's Map Bk.28 Pg. 75
 County of Solano, Calif.

09-10

POR. LOT 37, SUISUN RANCHO
 POR. SEC'S. 33 & 34, T.5N., R.2W., M.D.B. & EXT. (75)

Tax Area Code
 3050
 3152

28-76

1.	N.6°24'50"W.	179.04'
2.	R=95'	L=24.06'
3.	R=105'	L=36.56'
4.	N.6°24'50"W.	33.29'
5.	R=95'	L=9.01'
6.	N.1°11'33"W.	201.48'
7.	R=2020'	L=39.73'
8.	R=2020'	L=48.41'
9.	N.6°5'E.	20.00'
10.	R=210'	L=47.06'
11.	R=190'	L=42.58'
12.	N.89°58'27"E.	9.56'
13.	N.25°W.	15.06'
14.	R=1980'	L=220.75'
15.	NORTH	8.46'
16.	NORTH	45.96'
17.	R=3562'	L=12.00'
18.	N.89°51'30"E.	46.74'
19.	N.0°08'30"W.	89.80'
20.	N.50°49'05"E.	65.24'

21.	N.25°E.	27.94'
22.	N.1°16'28"E.	41.40'
23.	N.0°01'33"W.	50.04'
24.	N.89°58'27"E.	36.50'
25.	N.2°W.	22.31'
26.	N.67°W.	63.80'
27.	N.7°12'52"W.	27.87'
28.	N.2°E.	37.96'
29.	N.25°E.	103.40'
30.	N.63°27'03"W.	129.11'
31.	N.25°E.	60.62'
32.	N.63°27'03"W.	125.35'
33.	R=159'	L=8.48'

34.	R=9'	L=19.27'
35.	R=160'	L=77.01'
36.	N.89°51'30"E.	69.00'
37.	R=9'	L=14.66'
38.	R=50'	L=76.68'
39.	R=202'	L=68.52'
40.	N.22°37'34"E.	18.91'

41.	N.67°W.	9.00'
42.	N.25°E.	4.82'
43.	N.67°W.	21.77'
44.	N.2°E.	62.49'
45.	N.89°58'27"E.	90.15'
46.	R=150'	L=42.58'
47.	R=210'	L=47.06'
48.	N.0°08'30"W.	80.00'
49.	N.89°51'30"E.	86.67'
50.	N.0°08'30"W.	6.00'
51.	N.89°51'30"E.	38.67'
52.	N.89°42'38"W.	80.00'
53.	N.0°17'22"E.	86.67'
54.	N.89°42'38"W.	6.00'
55.	N.0°17'22"E.	38.67'

NOTE: This map is for assessment purposes only and is not for the intent of interpreting legal boundary rights, zoning regulations and/or legality of land division laws.

NOTE: Assessor's Block Numbers Shown in Ellipses
 Assessor's Parcel Numbers Shown in Circles

Adj. Pg. 95	12-17-03	SE
760-32thru37 Pm	12-23-02	JS
761-26thru31 Pm	9-11-00	FG
761-16thru25 Pm	8-5-97	SW
761-10thru15 Pm	9-22-95	FG
REVISION	DATE	BY

Lewis Pierce Subd. No.1 , R.M. Bk.3 Pg.7

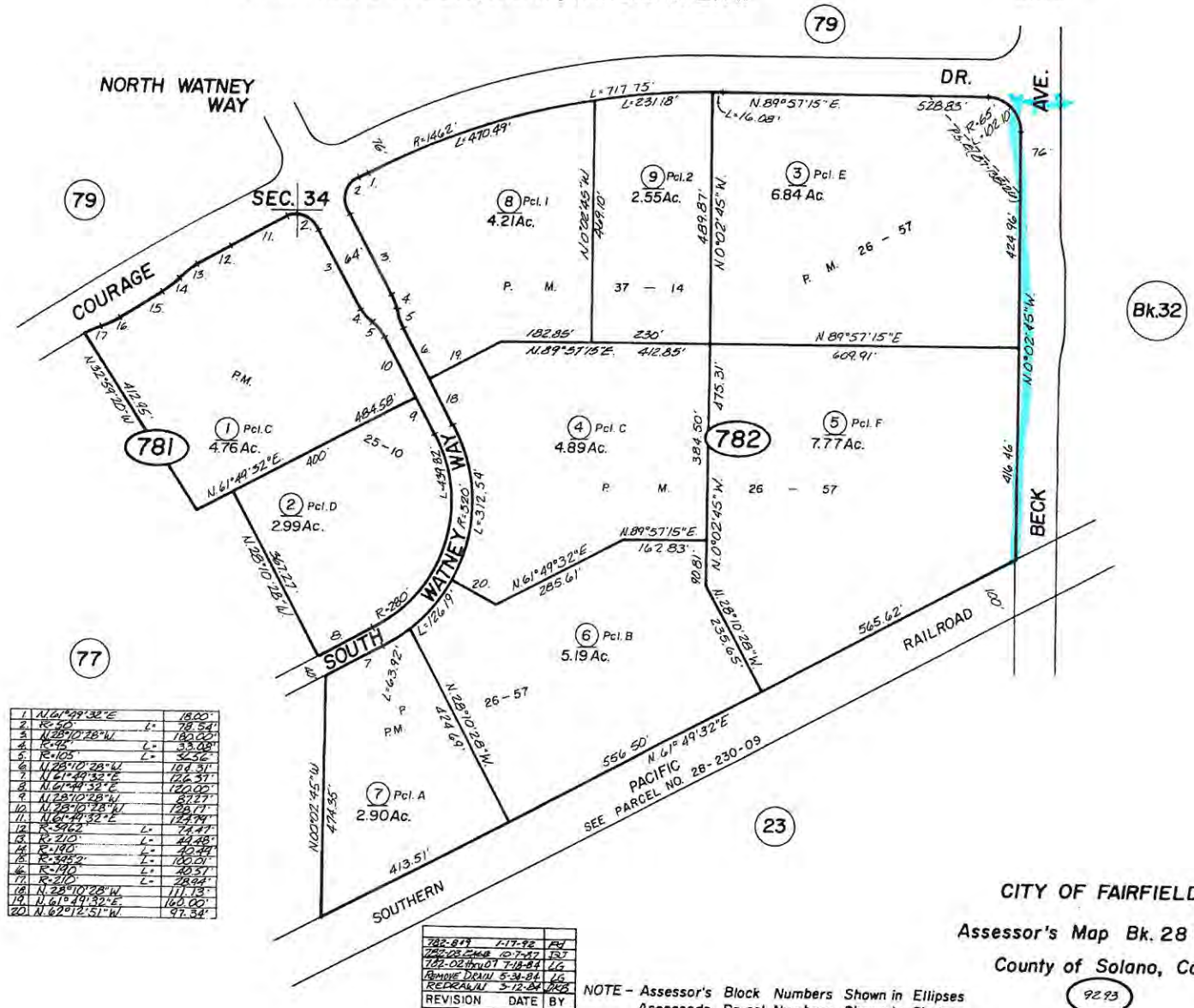
CITY OF FAIRFIELD
 Assessor's Map Bk.28 Pg.76
 County of Solano, Calif.

04-05

POR. LOT 37, SUISUN RANCHO
POR. SEC. 34, T.5N., R.2W., M.D.B.&M. EXT.

Tax Area Code
3076

28-78

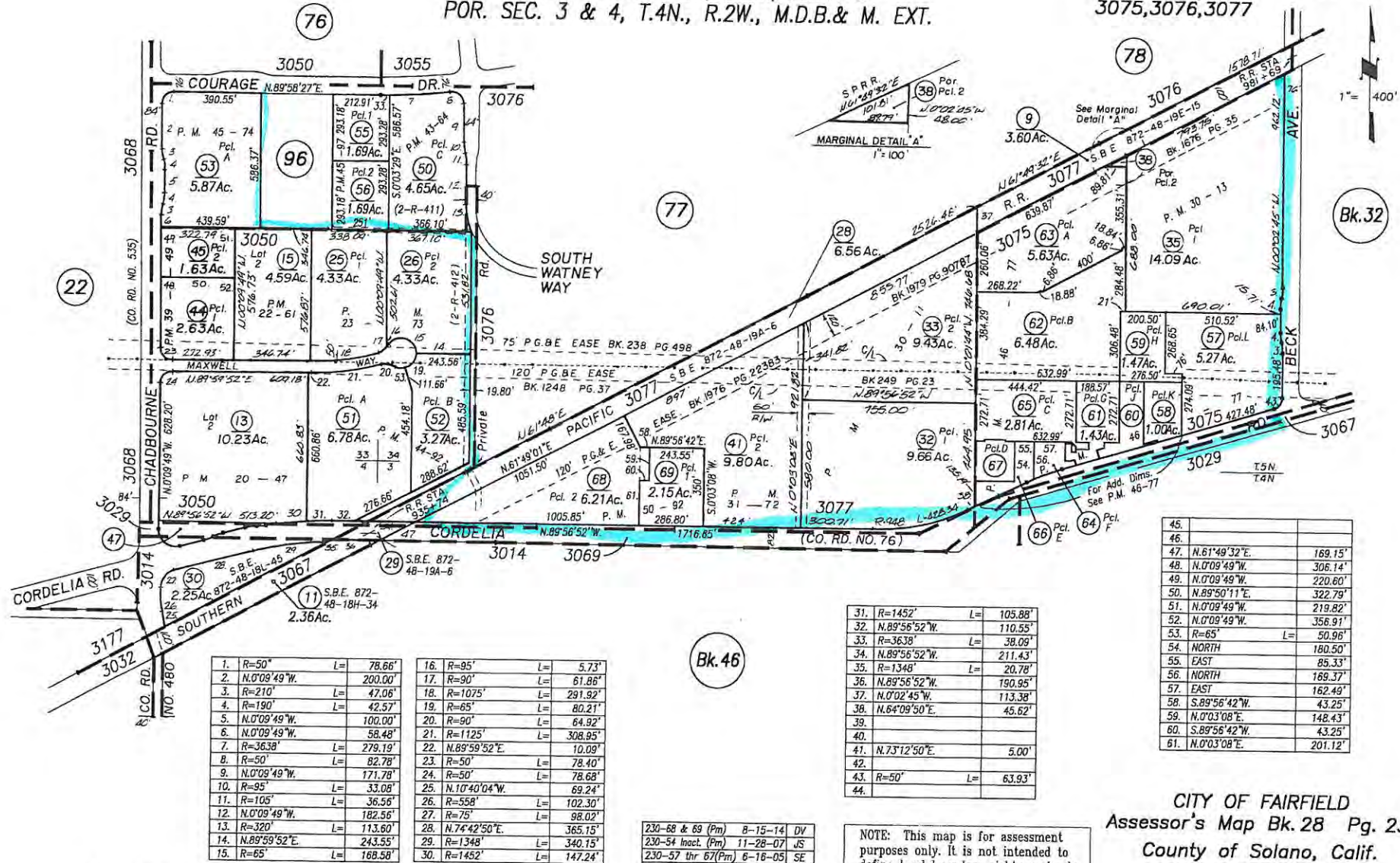


POR. LOT 37, SUISUN RANCHO
 POR. SEC. 33 & 34, T.5N., R.2W. &
 POR. SEC. 3 & 4, T.4N., R.2W., M.D.B. & M. EXT.

Tax Area Code
 3014,3050,3067
 3075,3076,3077

28-23

Copyright © 1996, Solano County Assessor/Recorder, All rights Reserved



CITY OF FAIRFIELD
 Assessor's Map Bk. 28 Pg. 23
 County of Solano, Calif.

(15-16)

28-20

[illegible]

Assessor's Block Numbers Shown in Ellipses, Assessor's Parcel Numbers Shown in Circles

(22)

200-76,77 (LLA)	12-26-13	Cr
200-56 Chg.(Rd)	6-22-11	Cr
Adj. Bk.44 (Remap)	12-31-10	Cr
200-70 to Pg.95(Dd)	10-11-06	JS
REVISION	DATE	BY

NOTE: This map is for assessment purposes only. It is not intended to define legal boundary rights or imply compliance with land division laws.

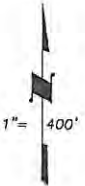
CITY OF FAIRFIELD
Assessor's Map Bk. 28 Pg. 20
County of Solano, Calif.

14-15

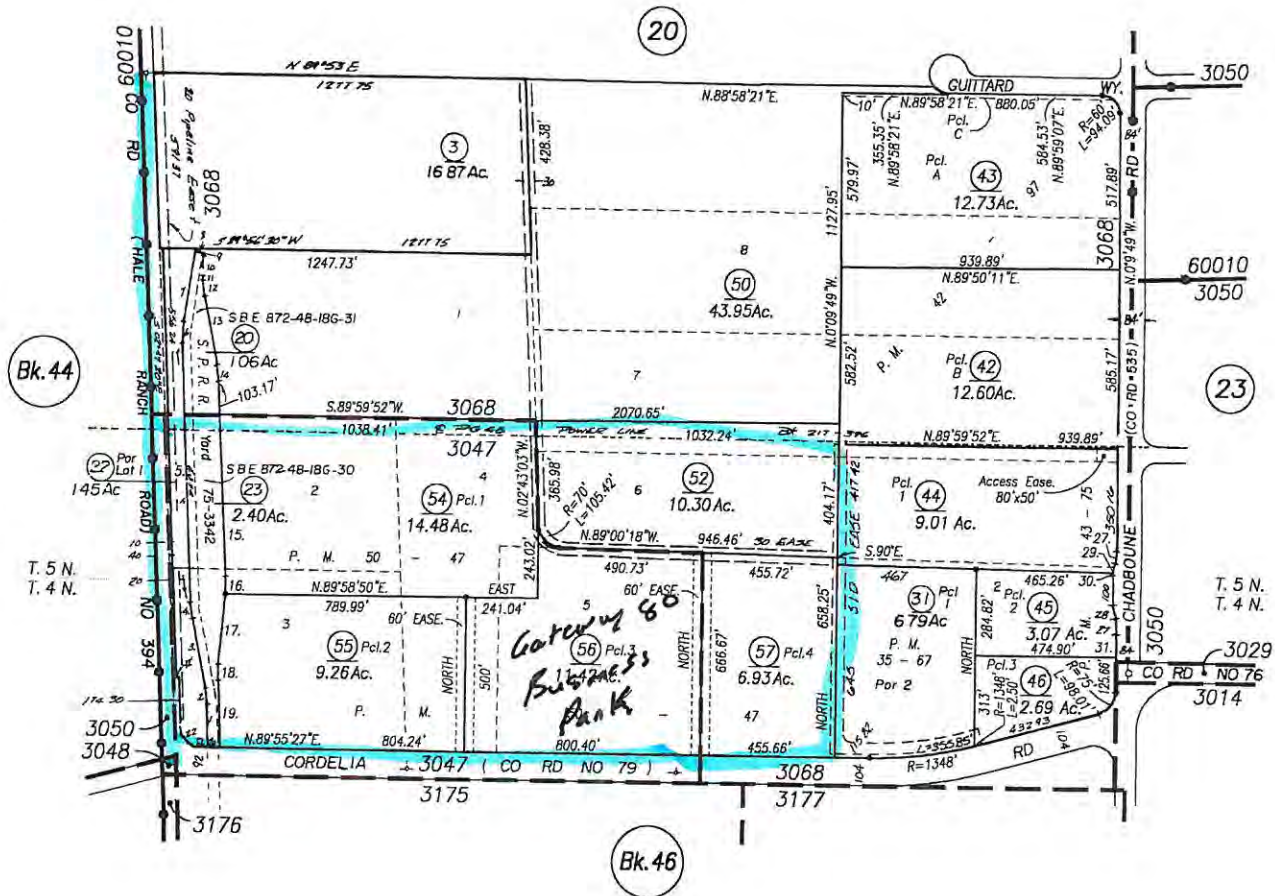
POR. LOT 37, SUISUN RANCHO
 POR. S.1/2 SEC. 33, T.5N., R.2W. & N.1/2 SEC. 4, T.4N., R.2W., M.D.B. & M. EXT.

Tax Area Code
 3047
 3068

28-22



1.	N.02°42'36"W.	129.97'
2.	R=367.25'	L= 52.37'
3.	N.10°52'52"W.	240.90'
4.	R=397.25'	L= 56.65'
5.	N.02°42'36"W.	870.51'
6.	R=397.25'	L= 73.08'
7.	N.07°49'51"E.	235.13'
8.	S.82°10'09"E.	35.00'
9.	S.07°49'51"W.	5.54'
10.	R=362.25'	L= 66.64'
11.	S.02°42'36"E.	15.78'
12.	R=362.25'	L= 51.66'
13.	S.10°52'52"E.	240.90'
14.	R=402.25'	L= 57.37'
15.	S.02°42'36"E.	552.13'
16.	R=402.25'	L= 57.37'
17.	S.05°27'40"W.	240.90'
18.	R=362.25'	L= 51.66'
19.	S.02°42'36"E.	209.62'
20.	S.89°55'27"W.	35.04'
21.	S.89°55'27"W.	66.78'
22.	S.48°26'57"E.	56.80'
23.	N.74°47'50"E.	359.98'
24.	R=75'	L= 137.60'
25.	S.10°09'49"E.	22.18'
26.	S.89°55'27"W.	442.08'
27.	R=200'	L= 44.82'
28.	R=200'	L= 44.82'
29.	R=200'	L= 23.14'
30.	R=200'	L= 21.68'
31.	N.00°09'49"W.	73.33'
32.		



Perry Ranch Subdivision , R.M. Bk. 25 Pg. 18

Assessor's Block Numbers Shown in Ellipses, Assessor's Parcel Numbers Shown in Circles

220-54thru57 (Rm)12-19-12	Cr
Adj. Bk.44 (Remap)12-31-10	Cr
220-51,52,53 (Lia) 9-30-09	Cr
280-49 & 50 (Dd.) 5-25-07	DV
REVISION	DATE BY

NOTE: This map is for assessment purposes only. It is not intended to define legal boundary rights or imply compliance with land division laws.

CITY OF FAIRFIELD
 Assessor's Map Bk. 28 Pg. 22
 County of Solano, Calif.

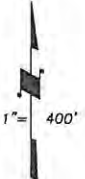
13-14

POR. LOT 37, SUISUN RANCHO
 POR. SEC. 4 & 5, T.4N., R.2W., M.D.B. & M. EXT.

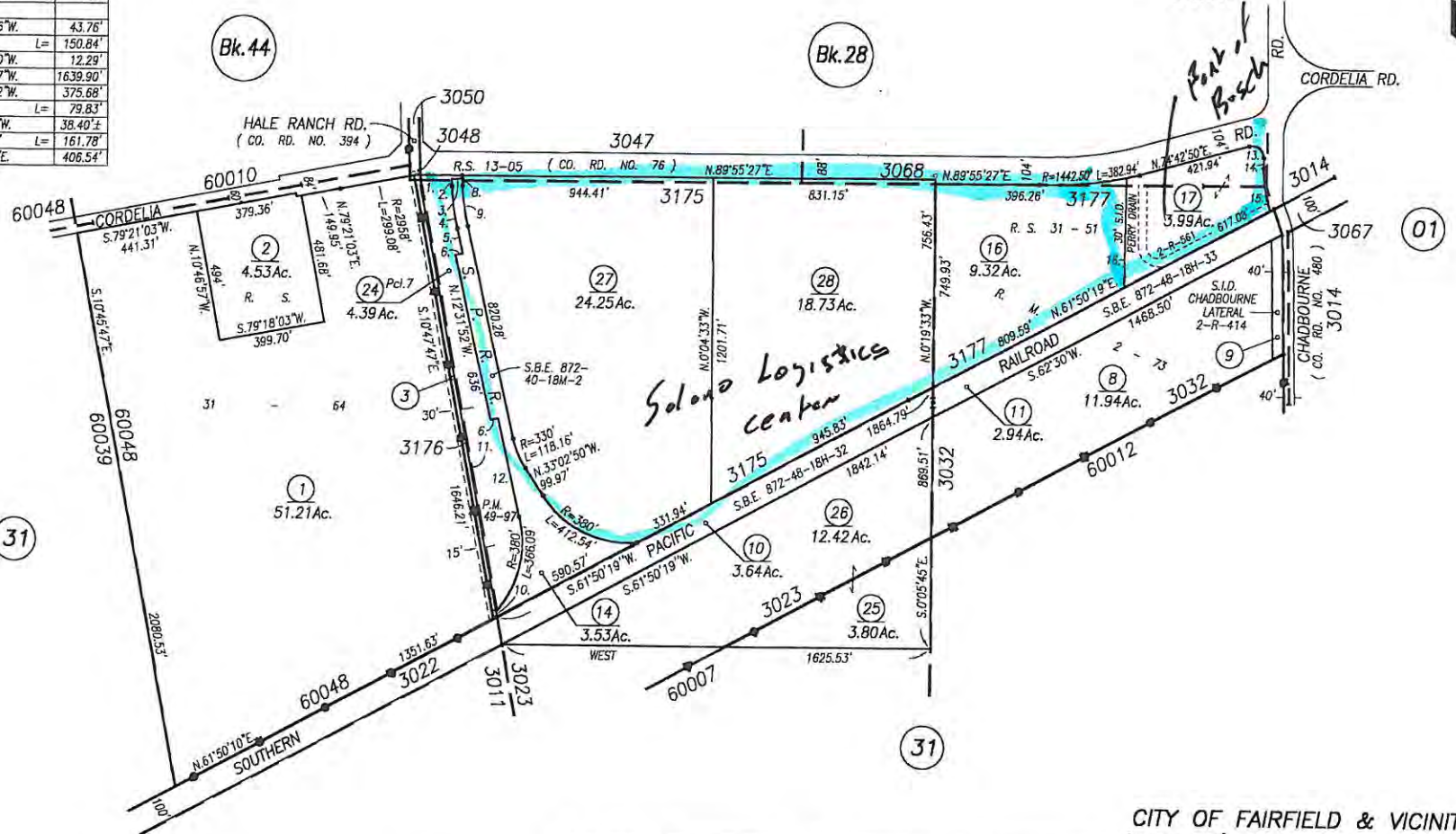
Tax Area Code

46-30

3023
 3032
 3175
 3176
 3177
 60007
 60048



1.	R=2958'	L=	129.83'
2.	N.2°42'36"W.		37.45'
3.	R=2958'	L=	40.01'
4.	R=920'	L=	157.70'
5.	N.12°31'52"W.		95.60'
6.	N.77°28'08"E.		28'
7.			
8.	N.02°42'36"W.		43.76'
9.	R=880'	L=	150.84'
10.	N.10°39'50"W.		12.29'
11.	N.10°47'47"W.		1639.90'
12.	N.12°31'52"W.		375.68'
13.	R=43.50'	L=	79.83'
14.	N.0°08'22"W.		38.40'±
15.	R=520.50'	L=	161.78'
16.	N.0°49'49"E.		406.54'



Map of Road No. 480, R.M. Bk. 02 Pg. 73

Assessor's Block Numbers Shown in Ellipses, Assessor's Parcel Numbers Shown in Circles

300-01,02,03 (Rs)	12-12-14	Cr
300-16 (Rs)	5-27-14	DV
300-01,02 (Rs)	2-5-13	Cr
300-27,28 (Lls)	5-17-13	Cr
REVISION	DATE	BY

NOTE: This map is for assessment purposes only. It is not intended to define legal boundary rights or imply compliance with land division laws.

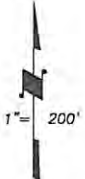
CITY OF FAIRFIELD & VICINITY
 Assessor's Map Bk. 46 Pg. 30
 County of Solano, Calif.

15-16

POR. LOT 37, SUISUN RANCHO
 POR. SEC'S 33 & 34, T.5N., R.2W., M. D. B. & M. EXT.

Tax Area Code
 3050
 3055
 3090
 3152

28-75

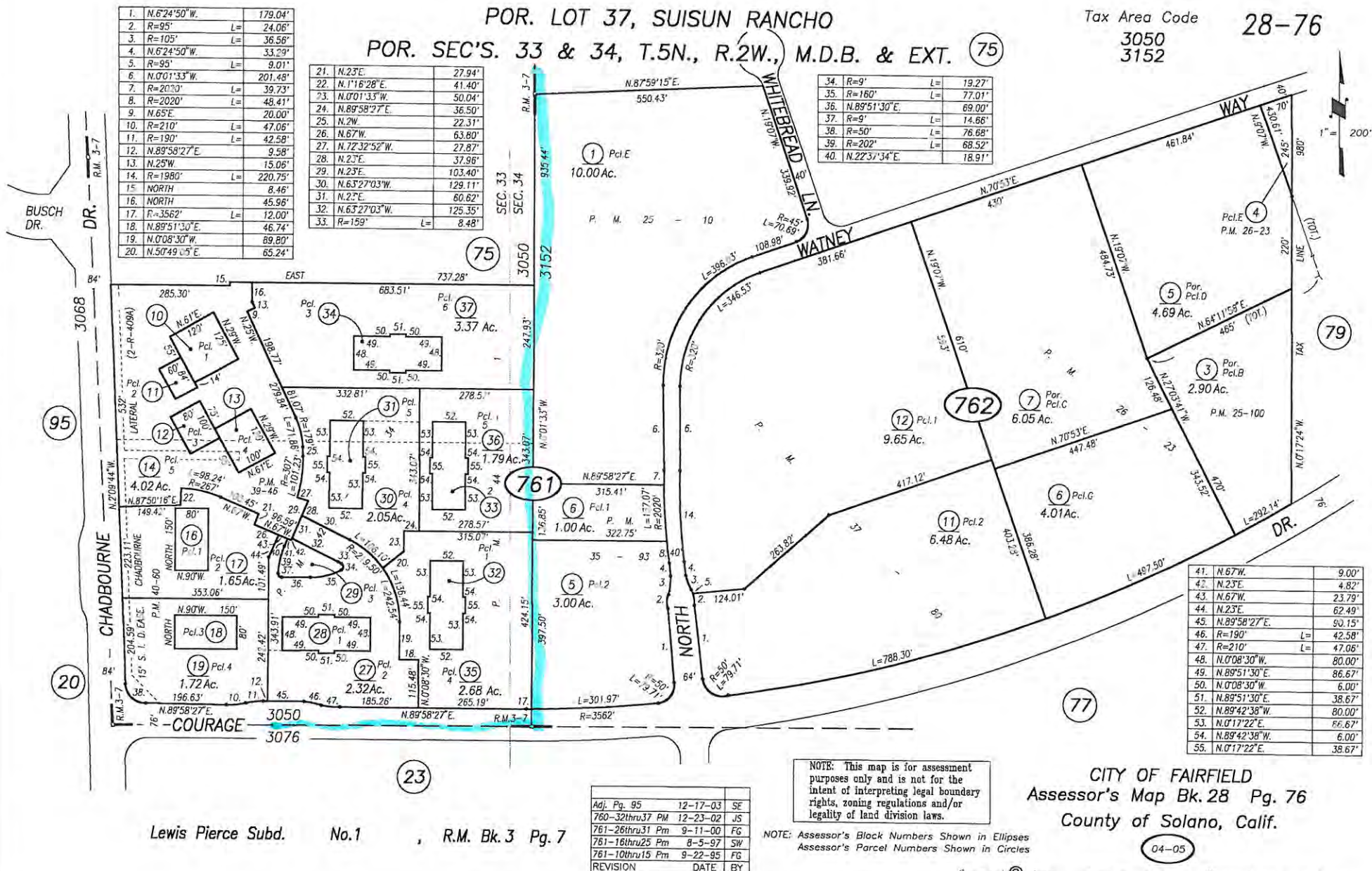


1.	N.89°58'27"E.	60.10'
2.	R=45'	L=70.68'
3.	N.2°09'44"W.	41.28'
4.	NORTH	8.46'
5.	N.42°50'16"E.	21.21'
6.	N.0°01'11"W.	57.33'
7.	R=67.50'	L=53.64'
8.		
9.	N.15°59'35"E.	73.77'
10.	N.87°50'16"E.	26.98'
11.	N.2°09'44"W.	90.00'
12.	N.42°50'16"E.	42.42'
13.	N.87°50'16"E.	11.98'
14.	R=131'	L=84.18'
15.	N.58°05'42"E.	33.10'



POR. LOT 37, SUISUN RANCHO
 POR. SEC'S. 33 & 34, T.5N., R.2W., M.D.B. & EXT. (75)

Tax Area Code 28-76
 3050
 3152



Lewis Pierce Subd. No.1 , R.M. Bk.3 Pg.7

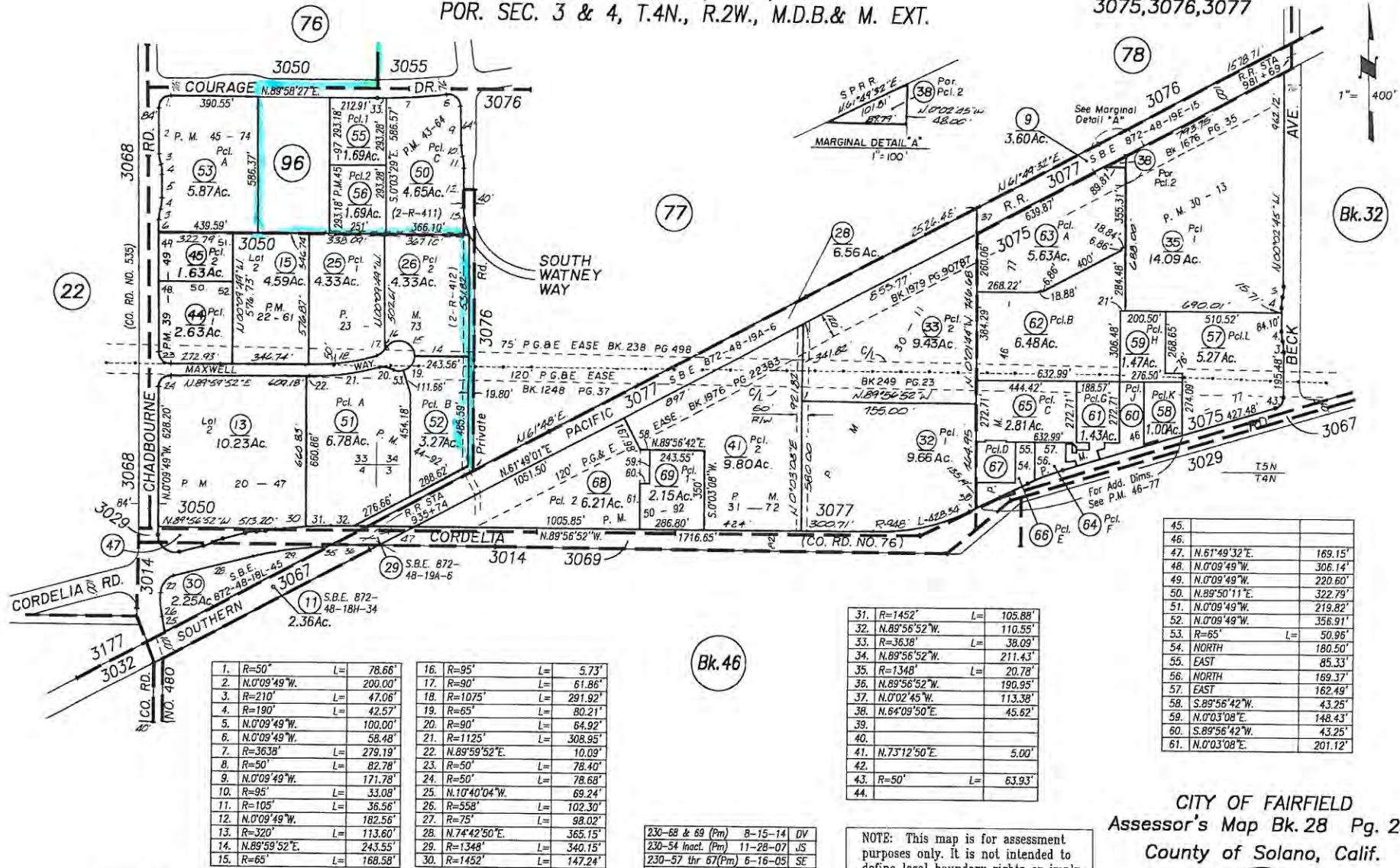
CITY OF FAIRFIELD
 Assessor's Map Bk.28 Pg.76
 County of Solano, Calif.

POR. LOT 37, SUISUN RANCHO
POR. SEC. 33 & 34, T.5N., R.2W. &
POR. SEC. 3 & 4, T.4N., R.2W., M.D.B. & M. EXT.

Tax Area Code
3014,3050,3067
3075,3076,3077

28-23

Copyright © 1996, Solano County Assessor/Recorder, All rights Reserved



Assessor's Block Numbers Shown in Ellipses, Assessor's Parcel Numbers Shown in Circles

230-68 & 69 (Pm) 8-15-14 DV
230-54 Inact. (Pm) 11-28-07 JS
230-57 thr 67(Pm) 6-16-05 SE
230-55 & 56 (Pm) 8-23-04 SE
REVISION DATE BY

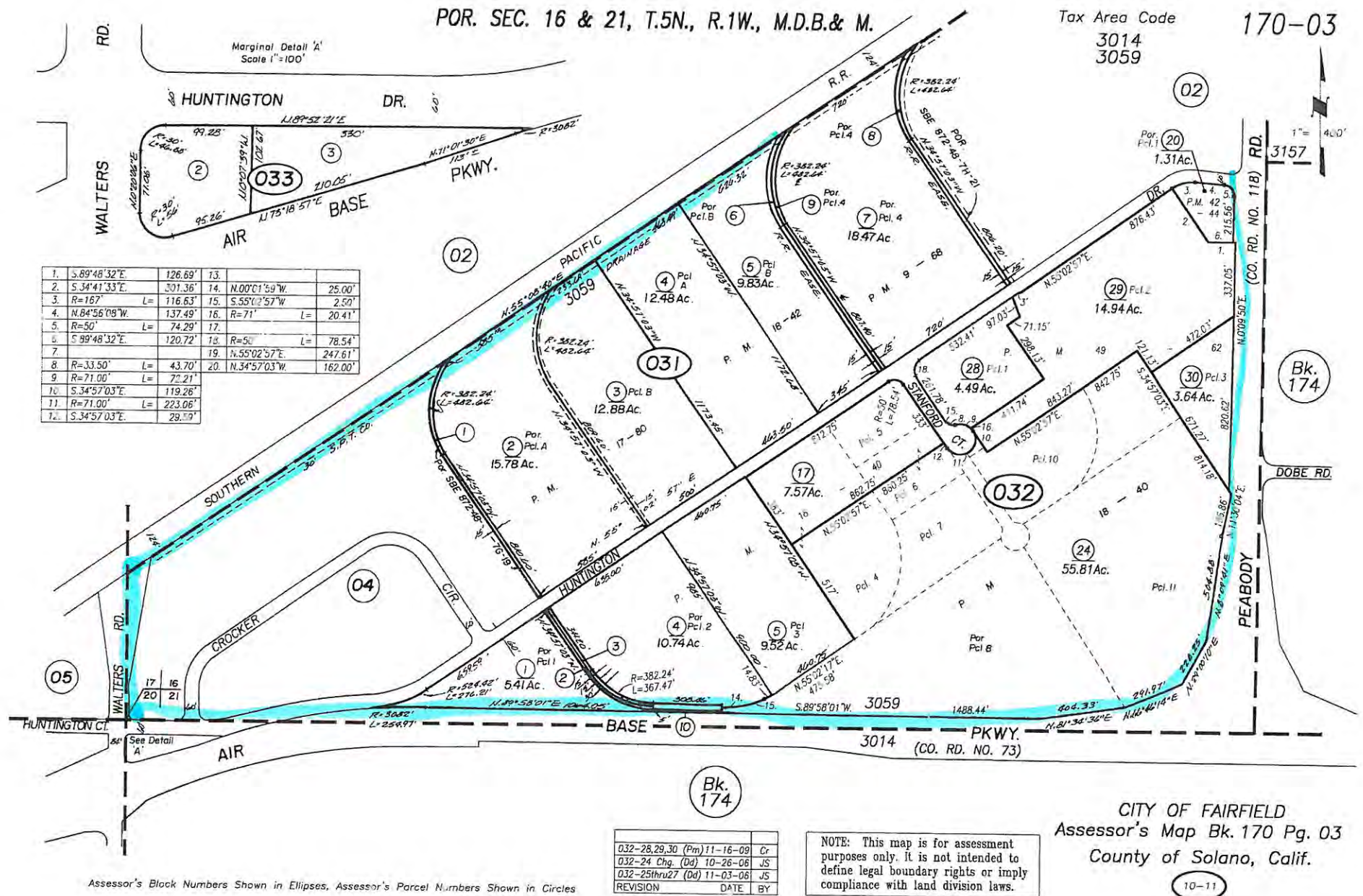
NOTE: This map is for assessment purposes only. It is not intended to define legal boundary rights or imply compliance with land division laws.

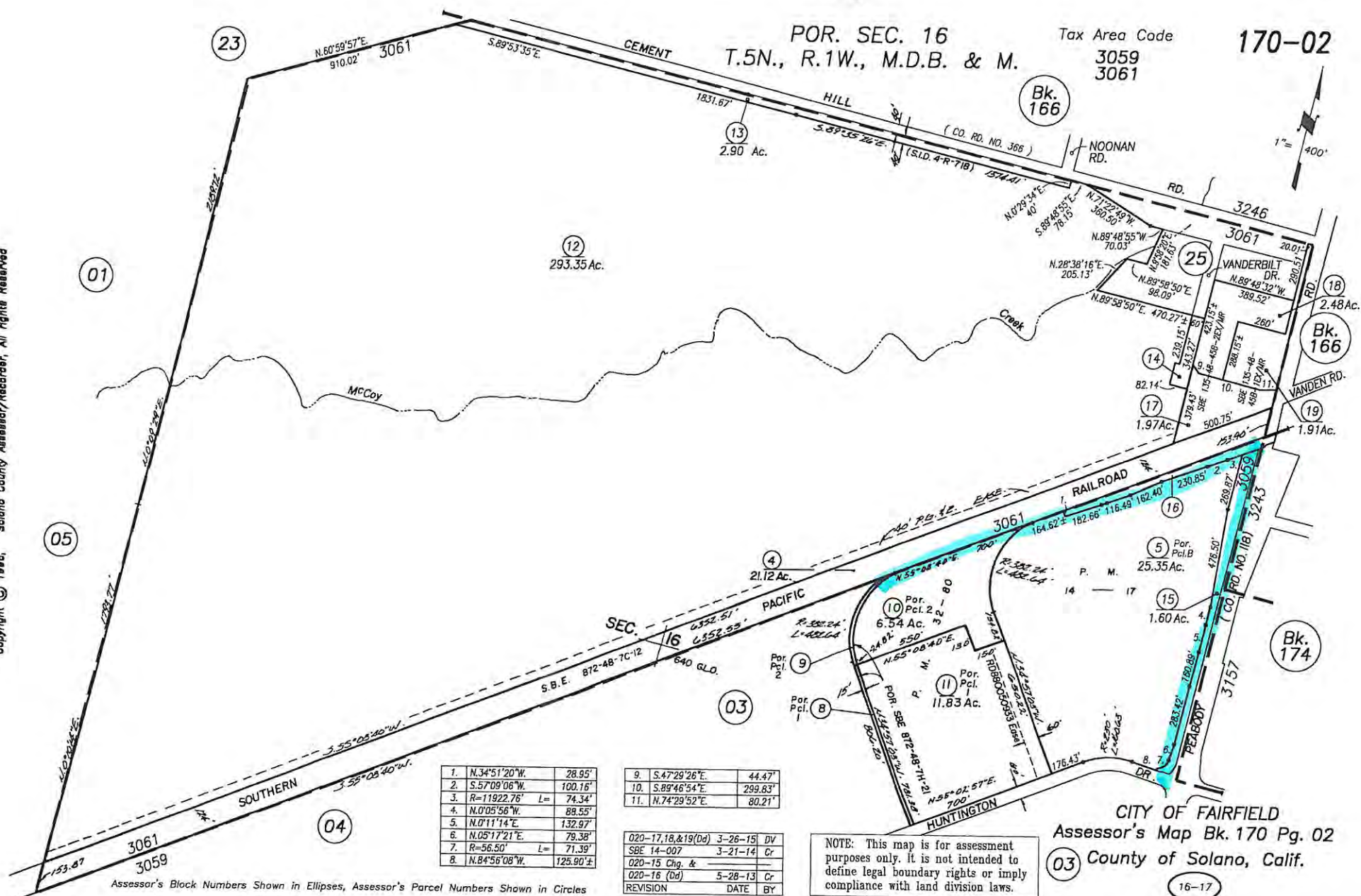
CITY OF FAIRFIELD
Assessor's Map Bk. 28 Pg. 23
County of Solano, Calif.

15-16

Tolenas Industrial Park



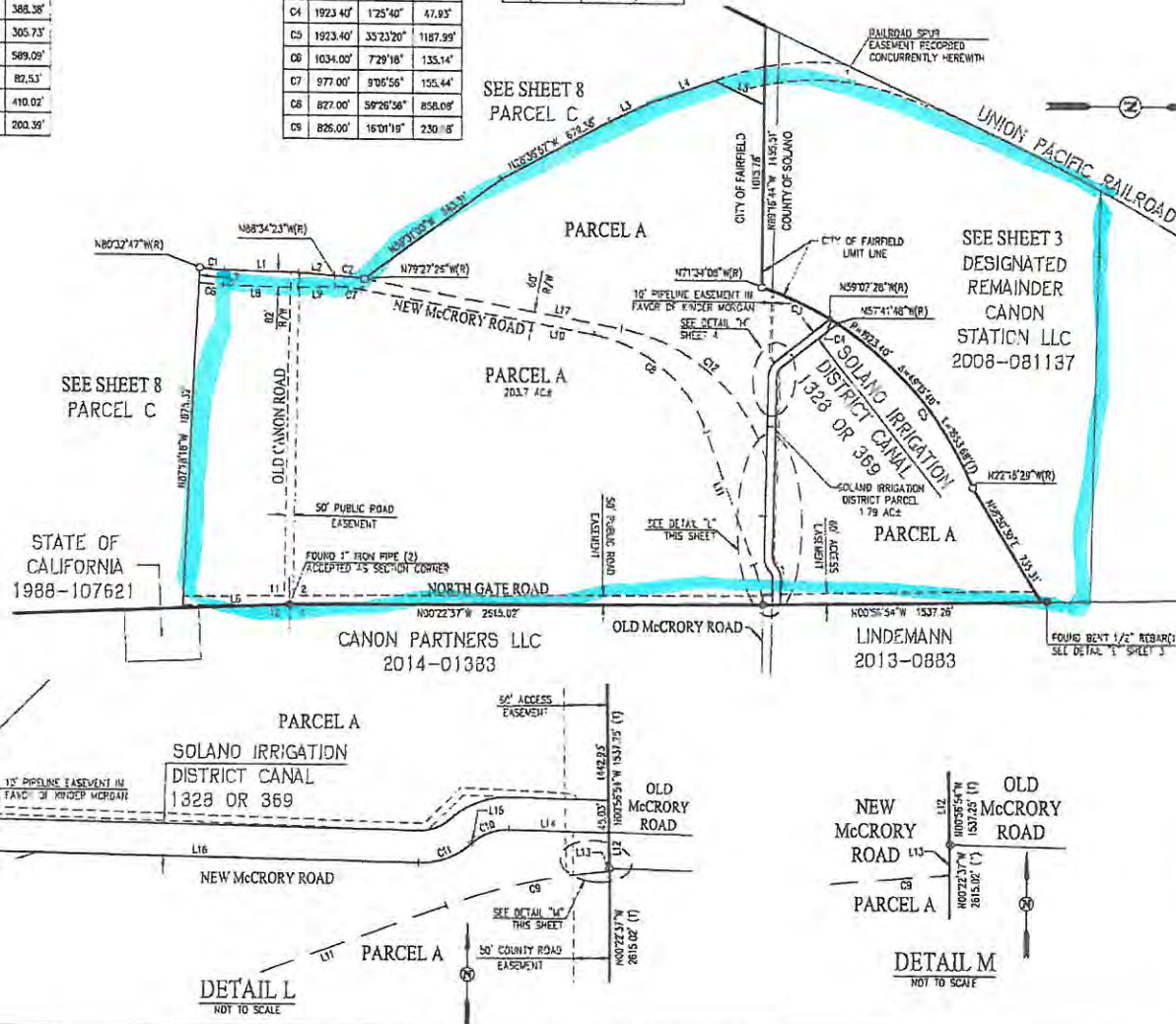




NO	BEARING	LENGTH
L1	N01°25'37"E	410.07'
L2	N04°34'26"E	200.39'
L3	N25°32'42"W	233.51'
L4	N19°44'07"W	368.38'
L5	N25°15'49"E	305.73'
L6	N02°14'40"W	589.09'
L7	N87°16'18"W	82.53'
L8	N01°25'37"E	410.02'
L9	N01°43'11"W	200.39'

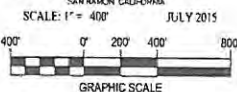
NO	RADIUS	DELTA	LENGTH
C1	952.00'	8°01'36"	133.37'
C2	1037.00'	9°56'56"	164.98'
C3	1923.40'	12°28'40"	417.76'
C4	1923.40'	12°25'40"	47.93'
C5	1923.40'	33°23'20"	1187.99'
C6	1034.00'	72°9'10"	135.14'
C7	977.00'	9°05'56"	155.44'
C8	827.00'	59°28'56"	858.08'
C9	826.00'	16°01'19"	230.18'

NO	RADIUS	DELTA	LENGTH
C10	73.00'	42°26'30"	54.07'
C11	107.00'	42°26'00"	79.24'
C12	1037.00'	62°50'30"	1137.31'



PARCEL MAP CANON STATION INDUSTRIAL

CONSISTING OF 8 SHEETS
BEING A SUBDIVISION OF A PORTION OF SECTIONS 2, & 11,
T. 5N. R. 1W., M.D.B. & M.
CITY OF FAIRFIELD, SOLANO COUNTY, CALIFORNIA
Carlson, Barbee & Gibson, Inc.
CIVIL ENGINEERS - SURVEYORS - PLANNERS
SAN RAFAEL, CALIFORNIA



BASIS OF BEARINGS:

THE BASIS OF BEARINGS FOR THIS SURVEY IS DETERMINED BY FOUND MONUMENTS SHOWN IN MOONAN ROAD, THE BEARING BEING N00°4'48"E PER GOLD RIDGE LARGE LOT FINAL MAP, FILED SEPTEMBER 2, 2002, IN BOOK 74 OF SUBDIVISION MAPS, AT PAGE 43, SOLANO COUNTY RECORDS.

REFERENCES:

- (#) INDICATES REFERENCE NUMBER
(1) RECORD OF SURVEY 13 RS 98
(2) RECORD OF SURVEY 7 RS 100
(3) RECORD OF SURVEY 10 RS 79
(4) RECORD OF SURVEY 20 RS 5
(5) RECORD OF SURVEY 26 RS 19
(6) PARCEL MAP 14 PM 73
(7) GRANT DEED 2008-81137

LEGEND

---	SUBDIVISION BOUNDARY LINE
---	RIGHT OF WAY LINE
---	LOT LINE
---	EASEMENT LINE
---	IRREVOCABLE OFFER OF DEDICATION
---	ADJOINING LOT LINE
---	SECTION LINE
---	CENTERLINE
---	TE LINE
(T)	TOTAL
(R)	RADIAL
●	FOUND STANDARD STREET MONUMENT
●	FOUND MONUMENT AS NOTED
○	SET 5/8" REBAR AND CAP, LS 7960
○	SEARCHED NOT FOUND

NOTES:

- THE FINAL ALIGNMENT FOR NEW McCRORY ROAD AT THE SOLANO IRRIGATION DISTRICT CANAL AND OLD McCRORY ROAD INTERSECTION HAS NOT BEEN DETERMINED. ONCE THE FINAL ALIGNMENT OF THE 60 FOOT WIDE RIGHT OF WAY IS DETERMINED THE CITY SHALL VACATE ITS RIGHT TO THE EXCESS RIGHT OF WAY.
- THE OFFER OF DEDICATION FOR NEW McCRORY ROAD SHOWN HEREON MAY REQUIRE MODIFICATION OF SOLANO IRRIGATION DISTRICT FACILITIES. SAID MODIFICATION WILL REQUIRE WRITTEN AGREEMENT WITH THE DISTRICT.

(#) INDICATES REFERENCE NUMBER
(1) RECORD OF SURVEY 13 RS 98
(2) RECORD OF SURVEY 7 RS 100
(3) RECORD OF SURVEY 10 RS 79
(4) RECORD OF SURVEY 20 RS 5
(5) RECORD OF SURVEY 26 RS 19
(6) PARCEL MAP 14 PM 73
(7) GRANT DEED 2008-81137

DESIGNATED
REMAINDER
CANON STATION LLC
2008-081137

USA
337 OR 504

BAY AREA —
ELECTRIC RAILROAD
ASSOCIATION INC.
1163 OR 168

PARCEL B

PARCEL C

CLARETIANS
MISSIONARIES
PRP
2014-53819

STATE OF CALIFORNIA
1988-107621

SOLANO COUNTY
1545 OR 236

UNION PACIFIC RAILROAD
1257549T 3912 0877
2622 44

SEE SHEET 7
PARCEL A

SEE SHEET 3
DESIGNATED
REMAINDER

CONSISTING OF 8 SHEETS
BEING A SUBDIVISION OF A PORTION OF SECTIONS 2 & 11,
T. 5N., R. 1W., M. 8B & M
CITY OF FAIRFIELD, SOLANO COUNTY, CALIFORNIA
Carlson, Barbee & Gibson, Inc.

THE BASIS OF BEARINGS FOR THIS SURVEY IS DETERMINED BY FOUND MONUMENTS SHOWN IN WOODMAN ROAD. THE BEARING BEING N00°14'48"E PER GOLD RIDGE LARGE LOT FINAL MAP, FILED SEPTEMBER 2, 2002, IN BOOK 74 OF SUBDIVISION MAPS, AT PAGE 43, SOLANO COUNTY RECORDS

	SURVEYON BOUNDARY LINE
	RIGHT OF WAY LINE
	LOT LINE
	EASEMENT LINE
	IRREVOCABLE OFFER OF DEDICATION
	ADJOINING LOT LINE
	SECTION LINE
	CENTERLINE
	TRAIL LINE
(T)	TOTAL
(R)	RADIAL
⊙	FOUND STANDARD STREET MONUMENT
⊙	FOUND MONUMENT AS NOTED
□	SET 5/8" REBAR AND CAP, LS 7960
⊙	SEARCHED NOT FOUND

LINE TABLE		
NO	BEARING	LENGTH
L1	N54°44'11"W	173.40'
L2	N54°44'11"W	200.00'
L3	N25°75'49"E	111.10'
L4	N89°16'41"W	439.73'
L5	N19°44'07"W	368.36'
L6	N25°32'42"E	233.51'
L7	N04°34'26"E	200.39'
L8	N01°25'37"E	410.02'
L9	N73°25'25"W	384.19'
L10	N44°56'55"W	309.22'
L11	N51°18'30"W	117.20'
L12	N82°29'59"W	136.25'

LINE TABLE		
NO	BEARING	LENGTH
L13	N55°41'04"W	510.61'
L14	N49°19'43"W	143.45'
L15	N57°03'08"W	89.21'
L16	N42°32'09"W	109.72'
L17	N06°45'50"W	128.12'
L18	N42°32'09"W	842.06'
L19	N75°43'35"W	136.69'
L20	N53°37'14"E	121.51'
L21	N82°39'34"W	187.39'
L22	S65°33'15"E	207.26'
L23	N22°24'25"E	263.40'
L24	S53°37'14"E	300.14'

LINE TABLE		
NO	BEARING	LENGTH
L25	N19°22'48"E	74.00'
L26	N75°39'41"W	293.26'
L27	N05°57'40"W	301.72'
L28	N31°53'49"W	540.88'
L29	N31°16'25"E	110.00'
L30	N79°29'05"E	400.34'
L31	N09°47'23"E	370.53'
L32	N33°46'39"E	265.04'
L33	N16°39'28"W	587.05'
L34	N82°29'59"W	136.25'
L35	N44°51'37"W	355.26'
L36	N39°52'55"W	225.61'

LINE TABLE		
NO	BEARING	LENGTH
L37	N39°52'53"W	597.76
L38	N25°15'49"E	119.00
L39	N64°44'11"W	700.49
L40	N64°44'11"W	700.49
L41	N40°20'17"W	197.81
L42	N31°53'49"W	540.88
L43	N05°57'40"W	301.72
L44	N79°39'41"W	293.26
L45	N00°39'14"E	371.18
L46	N29°59'03"E	300.00
L47	N29°59'03"E	300.00
L48	N53°55'50"E	109.27

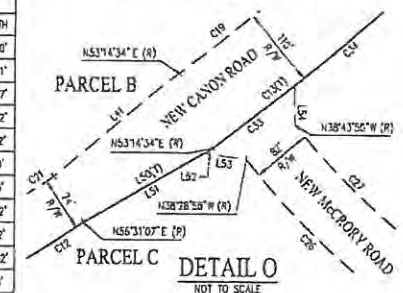
LINE TABLE		
NO	BEARING	LENGTH
L49	N53°56'50"E	109.27
L50	N30°02'08"W	203.05
L51	N30°02'08"W	189.38
L52	N30°02'08"W	13.67
L53	N07°35'16"E	57.55
L54	N69°14'18"E	53.28
L55	N02°14'40"W	71.04
L56	N25°15'49"E	305.73

CURVE TABLE		
NO	RADIUS	DELTA
C1	1037.00'	90°56"
C2	957.00'	80°1'36"
C3	2814.93'	14°29'00"
C4	2814.93'	28°28'30"
C5	1005.37'	2°56'11"
C6	5689.65'	5°04'00"
C7	623.69'	14°59'00"
C8	523.69'	25°48'55"
C9	1029.00'	9°02'29"
C10	971.00'	73°42'01"
C11	1029.00'	25°56'09"
C12	1698.00'	1°53'04"

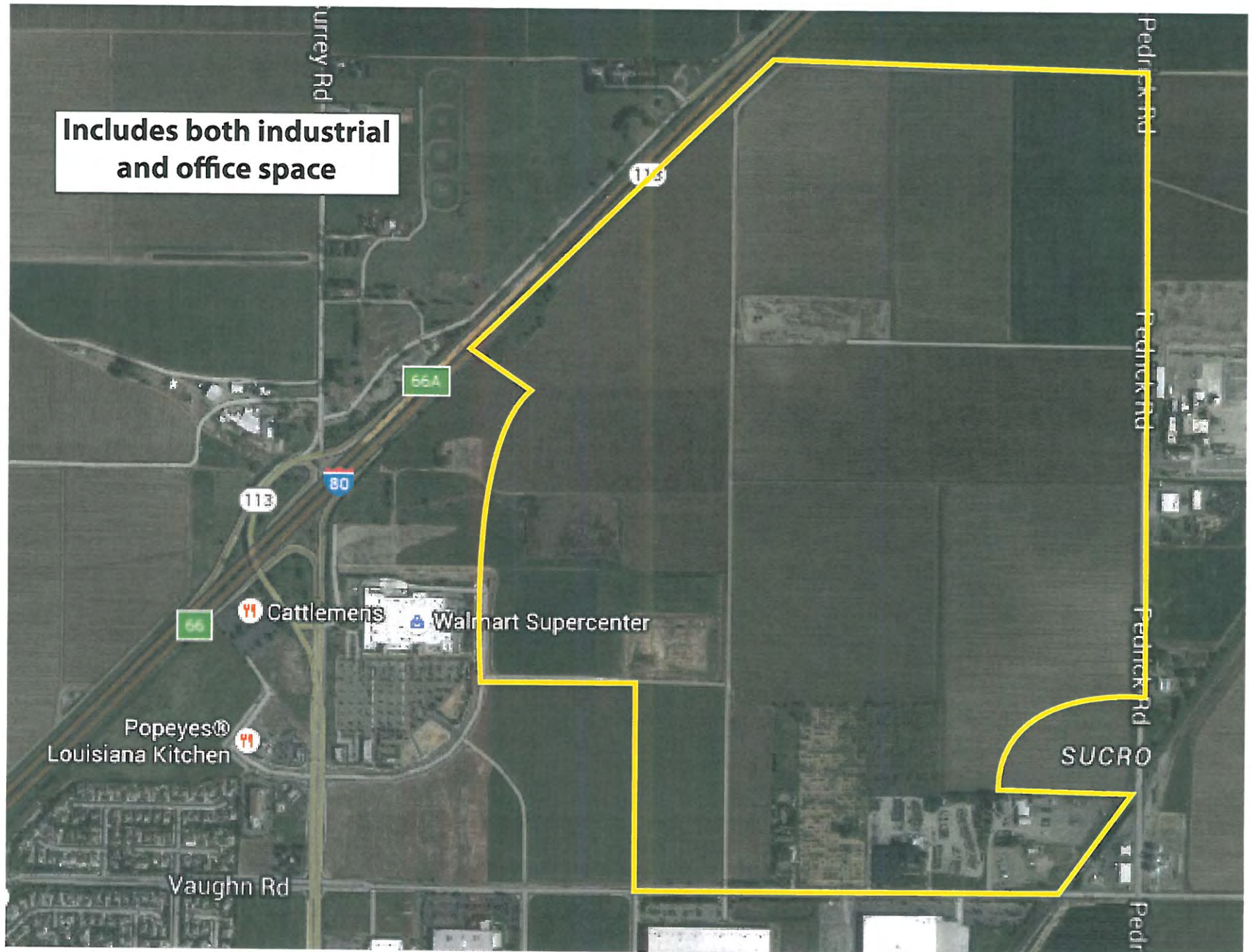
LENGTH	CURVE T		
	NO	RADIUS	D
164.96'	C13	3547.00'	21°
133.37'	C14	623.69'	10°
711.57'	C15	523.69'	37°
398.97'	C16	543.14'	54°
51.53'	C17	3437.00'	6°
594.03'	C18	3547.00'	6°
163.10'	C19	3437.00'	21°
245.09'	C20	3455.00'	13°
62.36'	C21	955.00'	25°
249.01'	C22	1045.00'	73°
65.79'	C23	955.00'	9°
27.56'	C24	955.00'	9°

TABLE			
WAVELENGTH	LENGTH	NO	RADI
0°08'	1360.04'	C25	1029
0°23'	119.08'	C26	1034
0°22'	344.03'	C27	952
0°41'	513.42'	C28	1034
0°36'	360.52'	C29	952
0°36'	372.06'	C30	225
0°09'	1317.66'	C31	275
0°04'	95.54'	C32	1029
0°09'	432.30'	C33	3547
2°01'	1344.19'	C34	3547
0°29'	150.70'	C35	2814
0°06'	168.08'		

CURVE TABLE		
ΔS	DELTA	LENGTH
00'	33°10'29"	595.80'
00'	21°32'02"	388.61'
00'	21°7'08"	333.67'
00'	21°04'07"	380.22'
00'	20°31'49"	341.12'
00'	17°34'14"	69.00'
00'	5°55'36"	28.45'
00'	15°04'28"	270.72'
00'	21°6'40"	141.02'
00'	19°41'28"	1219.02'
03'	0°57'52"	47.38'



Northeast Quadrant Dixon



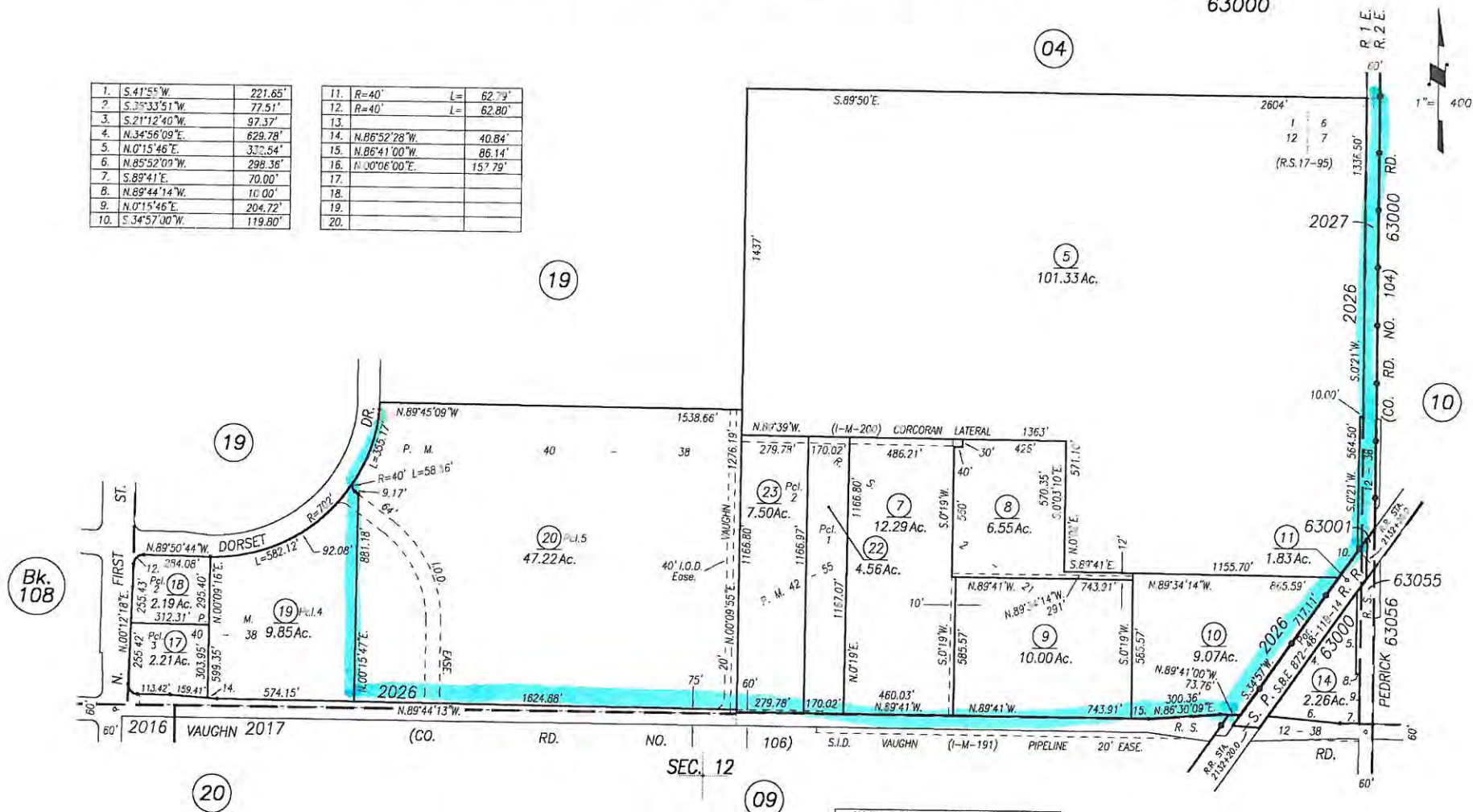
POR. N. 1/2 SEC. 12, T.7N., R.1E., M.D.B.& M

Tax Area Code
2026
63000

111-08

1.	S.41°55'W.	221.65'
2.	S.2°33'51"W.	77.51'
3.	S.21°12'40"W.	97.37'
4.	N.34°56'09"E.	629.78'
5.	N.0°15'46"E.	332.54'
6.	N.85°52'09"W.	298.36'
7.	S.89°41'E.	70.00'
8.	N.89°44'14"W.	10.00'
9.	N.0°15'46"E.	204.72'
10.	S.34°57'00"W.	119.80'

11.	R=40'	L= 62.79'
12.	R=40'	L= 62.80'
13.		
14.	N.86°52'28"W.	40.84'
15.	N.86°41'00"W.	86.14'
16.	N.0°06'00"E.	157.79'
17.		
18.		
19.		
20.		



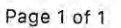
NOTE: This map is for assessment purposes only and is not for the intent of interpreting legal boundary rights, zoning regulations and/or legality of land division laws.

NOTE: Assessor's Block Numbers Shown in Ellipses
Assessor's Parcel Numbers Shown in Circles

Adj. Pg. 20	11-7-06	JS
Map Maint.	8-28-04	JS
080-02,03&21to Pg.19	11-14-02	JS
080-22&23 Pm	2-13-01	FG
REVISION	DATE	BY

CITY OF DIXON
Assessor's Map Bk. 111 Pg. 08
County of Solano, Calif.

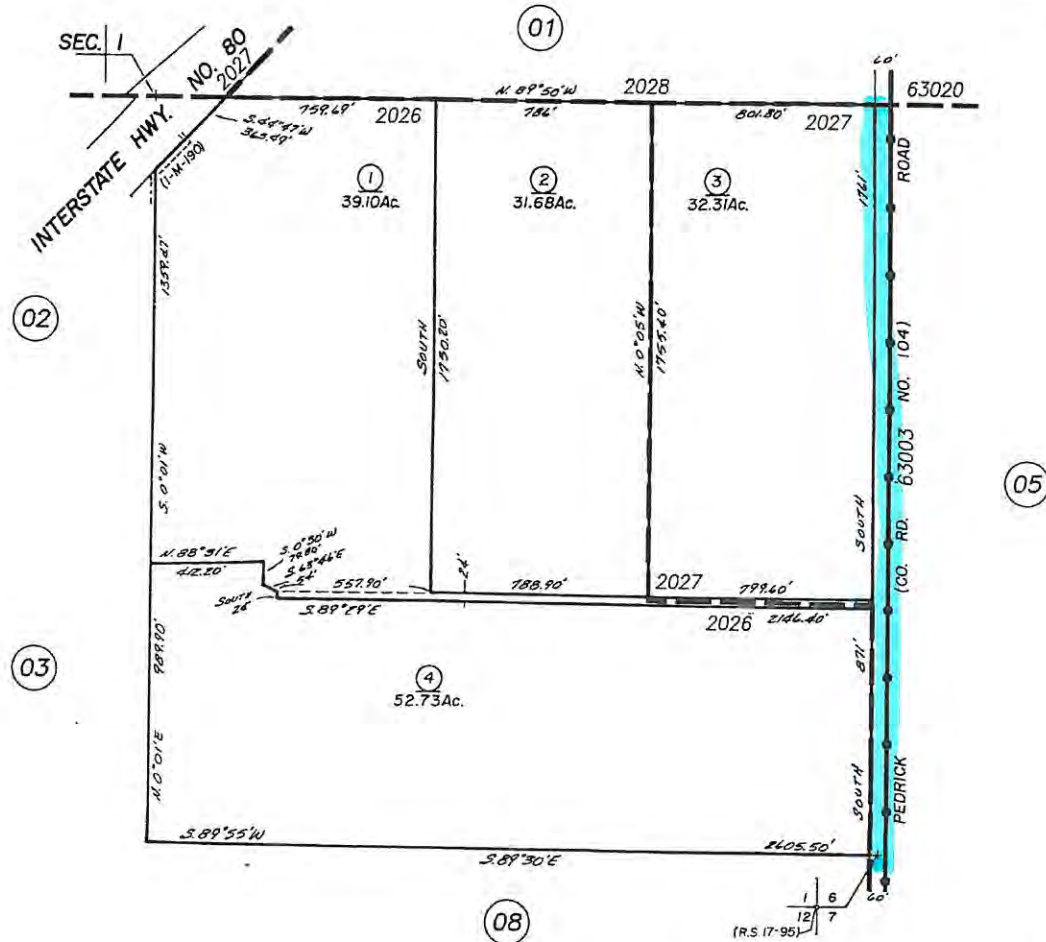
07-08



POR. S.E. 1/4 SEC. 1, T.7N., R.1.E., M.D.B. & M.

Tax Area Code
2026
2027

111-04



SBE 97-003	10-4-96	PG
R.S. 17-95	12-4-85	DJ
REVISION	DATE	BY

NOTE: This map is for assessment purposes only and is not for the intent of interpreting legal boundary rights, zoning regulations and/or legality of land division laws.

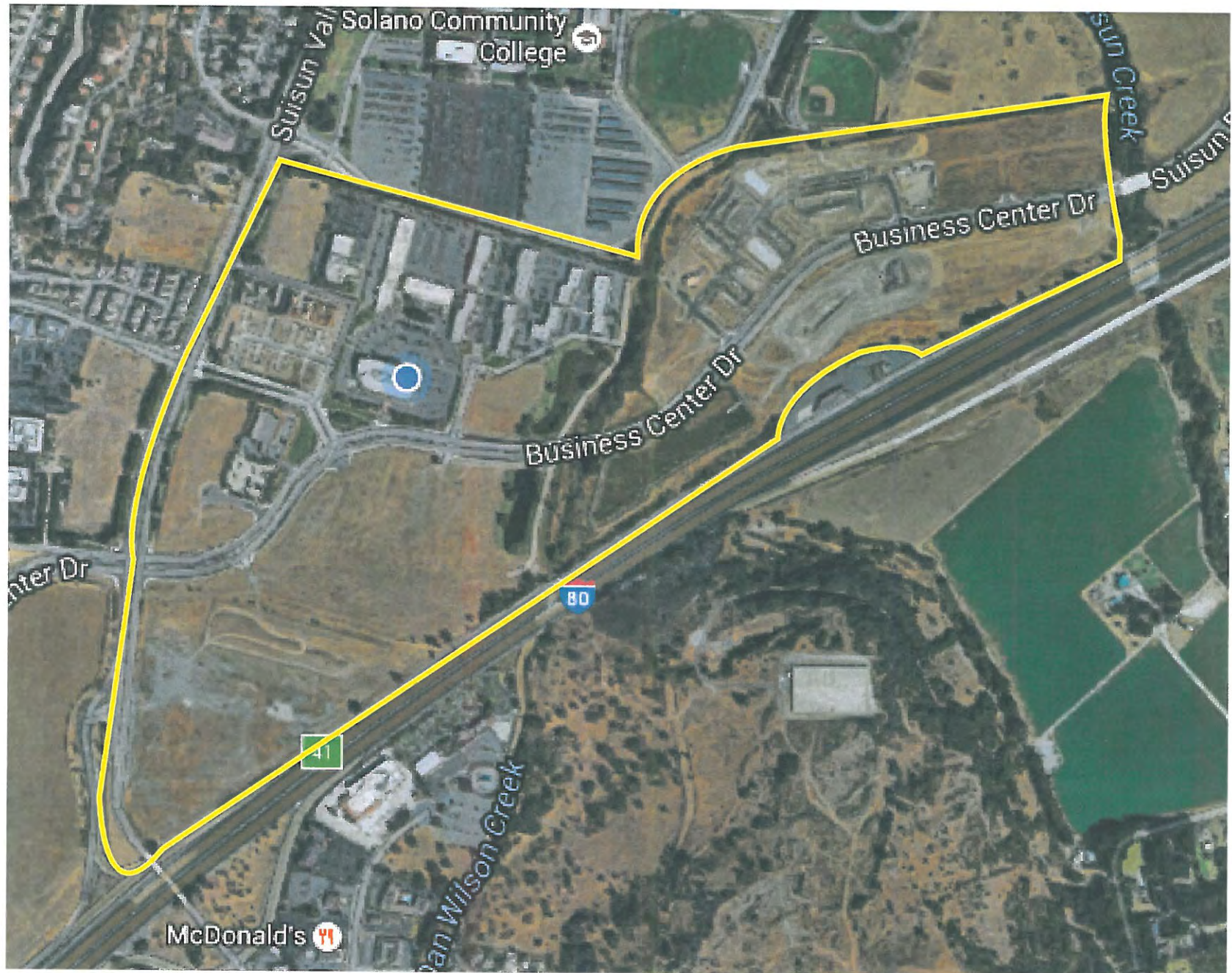
NOTE: Assessor's Block Numbers Shown in Ellipses
Assessor's Parcel Numbers Shown in Circles

CITY OF DIXON
Assessor's Map Bk. 111 Pg. 04
County of Solano, Calif.

97 98

Copyright © - 1996, Solano County Assessor/Recorder, All rights Reserved

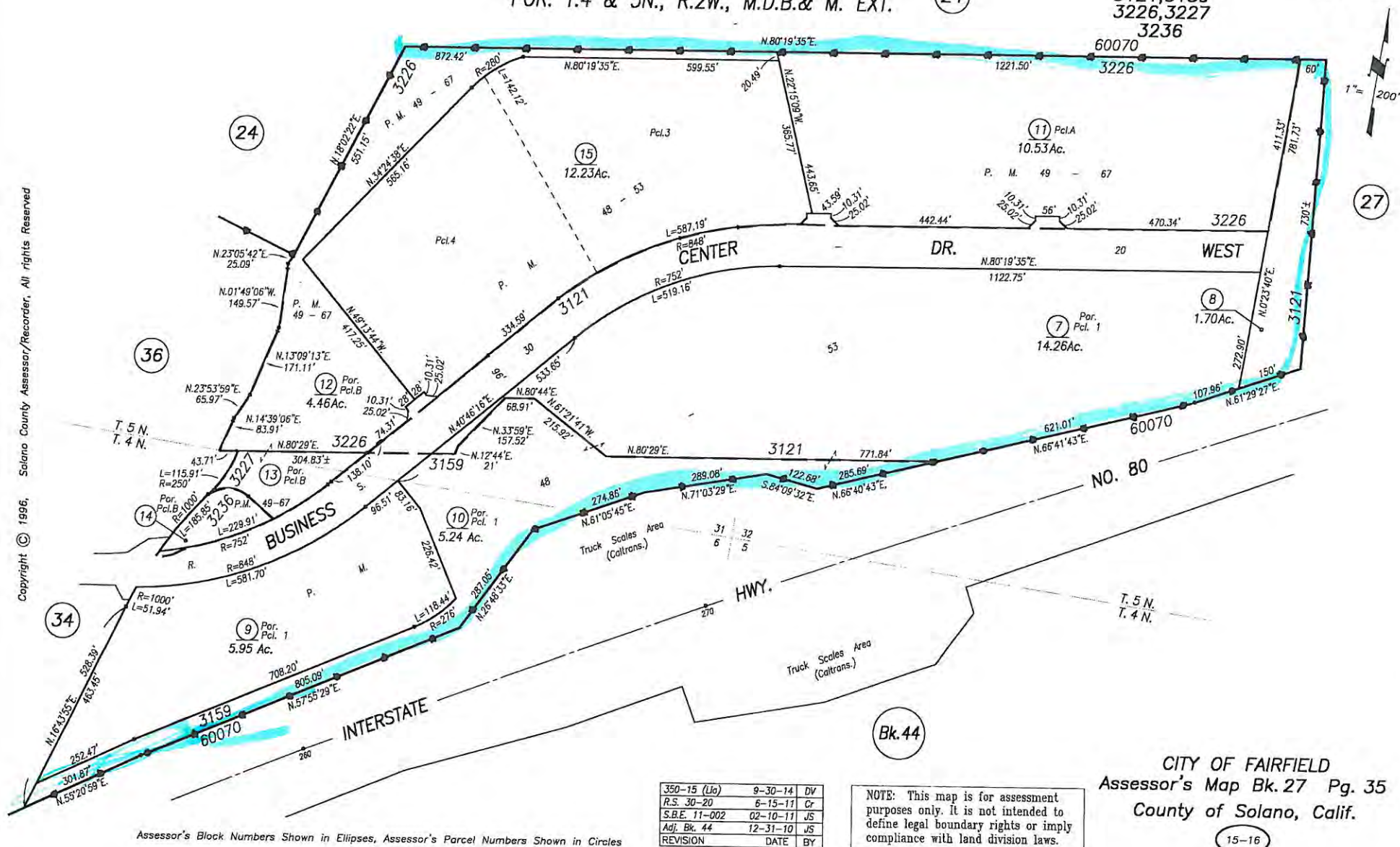
Fairfield Corporate Commons



POR. LOT 37, SUISUN RANCHO
POR. T.4 & 5N., R.2W., M.D.B.& M. EXT.

Tax Area Code
3121,3159
3226,3227
3236

27-35



27-24



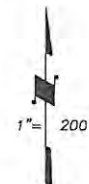
NOTE: This map is for assessment purposes only. It is not intended to define legal boundary rights or imply compliance with land division laws.

13-14

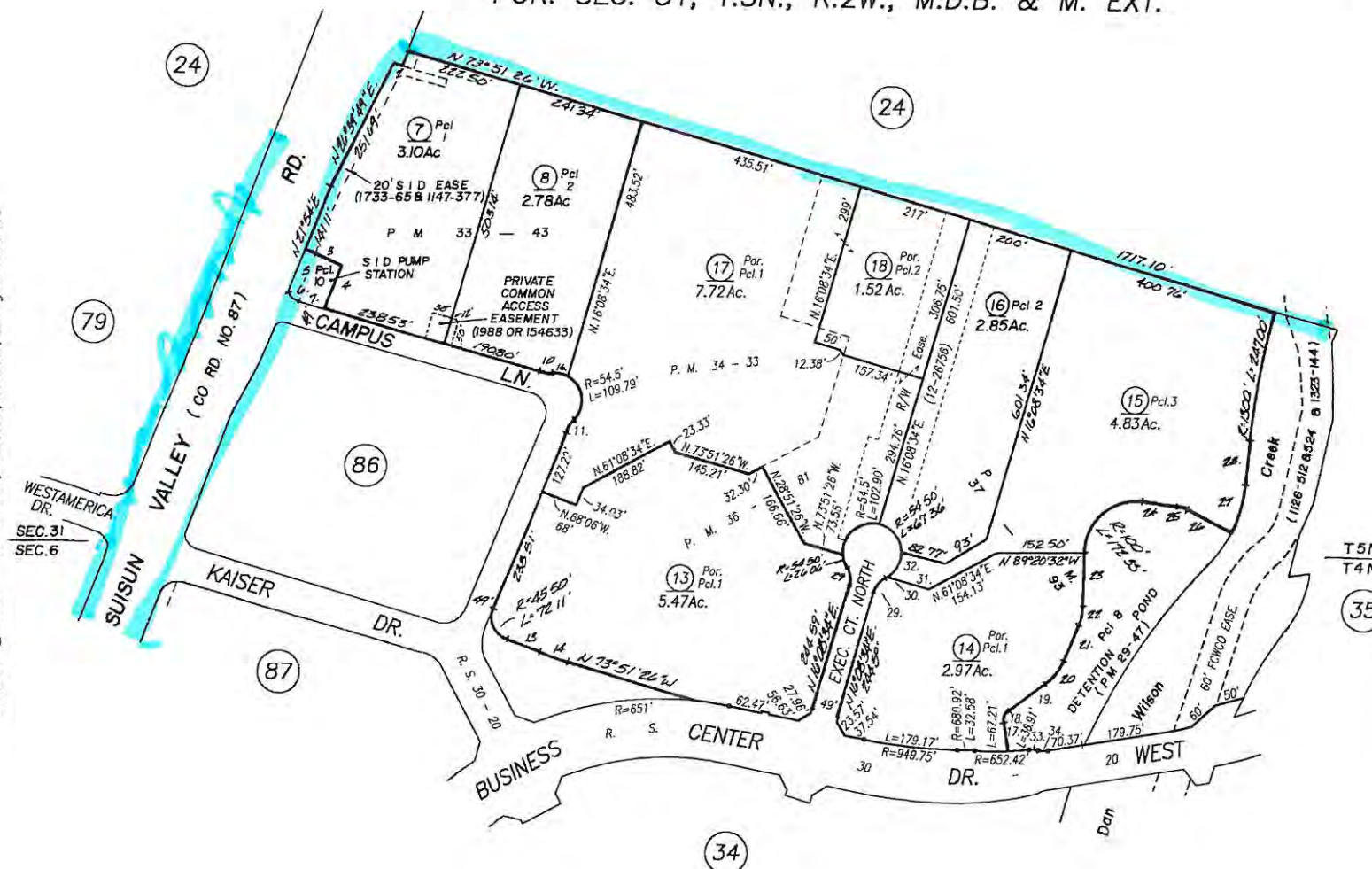
POR. LOT 37, SUISUN RANCHO
 POR. SEC. 6, T.4N., R.2W., M.D.B. & M. EXT.
 POR. SEC. 31, T.5N., R.2W., M.D.B. & M. EXT.

Tax Area Code
 3159

27-36



Copyright © 1996, Solano County Assessor/Recorder, All rights Reserved



1.	N.20°37'01"E.	25.06'
2.	N.73°51'24"W.	20.25'
3.	N.68°06'05"W.	75.01'
4.	N.21°54'E.	83.20'
5.	N.21°54'E.	82.57'
6.	R=40.50'	L=26.15'
7.	N.73°51'26"W.	50.19'
8.		
9.		
10.	R=45.50'	L=20.52'
11.	R=45.50'	L=20.52'
12.		
13.	N.68°54'13"W.	69.69'
14.	R=595.50'	L=51.49'
15.	R=45.50'	L=36.19'
16.	R=54.50'	L=30.46'
17.	N.7°53'38"W.	65.11'
18.	R=25.00'	L=26.91'
19.	N.53°47'E.	81.18'
20.	R=100.00'	L=55.81'
21.	N.21°48'27"E.	70.08'
22.	R=100.00'	L=36.91'
23.	N.0°39'28"E.	103.79'
24.	N.80°36'22"W.	62.44'
25.	R=65.00'	L=19.85'
26.	N.63°06'40"W.	97.96'
27.	R=250.00'	L=94.98'
28.	N.5°07'19"E.	87.73'
29.	R=45.50'	L=36.19'
30.	R=54.50'	L=27.02'
31.	N.73°51'26"W.	89.18'
32.	R=54.50'	L=34.58'
33.	R=51'	L=16.49'
34.	R=49'	L=18.67'

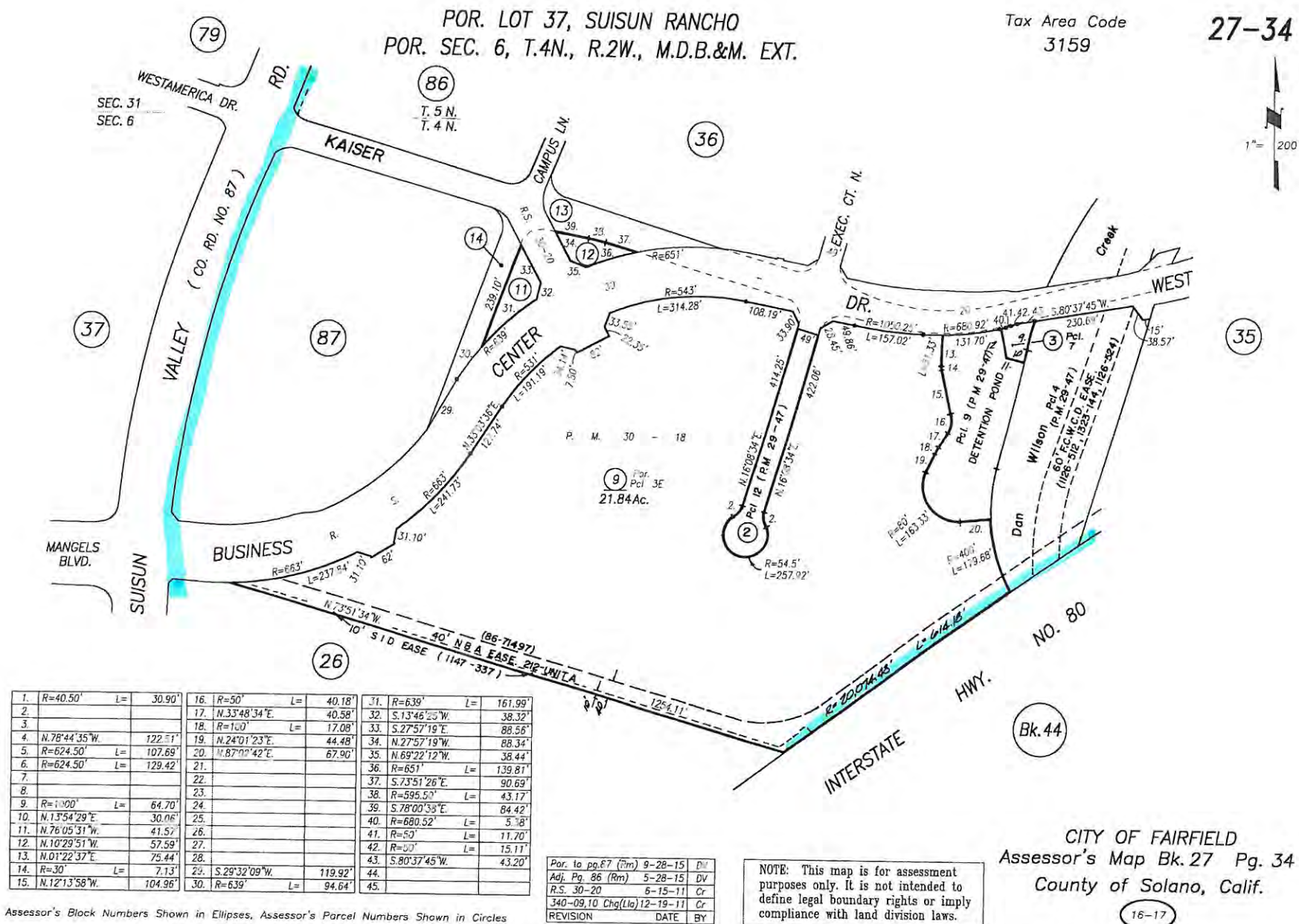
Adj. pg. 87 (Rm)	9-28-15	DV
Por to pg. 86 (Rm)	5-28-15	DV
360-17,18 (Lia)	3-22-12	Cr
R.S. 30-20	6-15-11	Cr
REVISION	DATE	BY

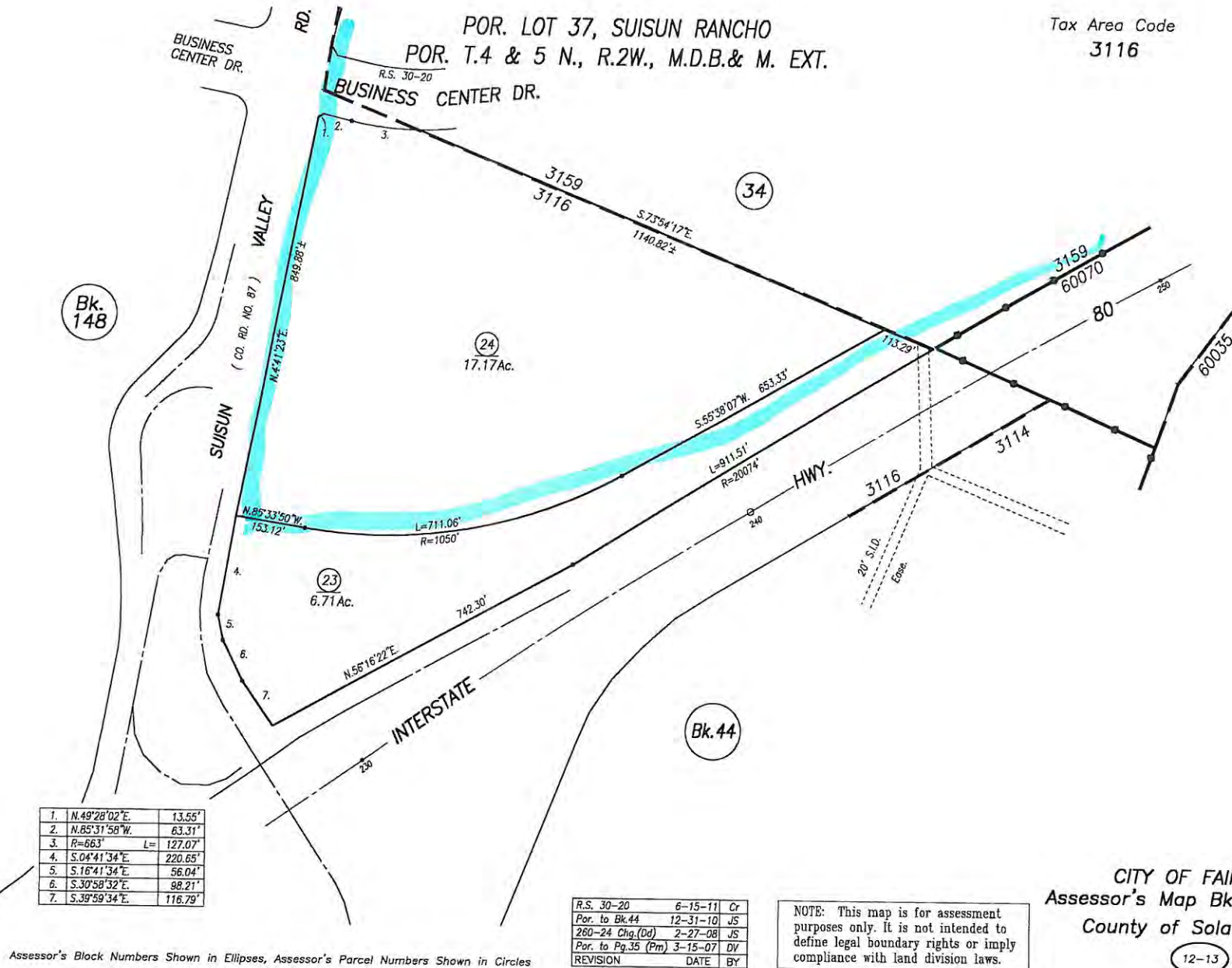
NOTE: This map is for assessment purposes only. It is not intended to define legal boundary rights or imply compliance with land division laws.

CITY OF FAIRFIELD
 Assessor's Map Bk. 27 Pg. 36
 County of Solano, Calif.

16-17

Assessor's Block Numbers Shown in Ellipses, Assessor's Parcel Numbers Shown in Circles





VacaValley Business Park

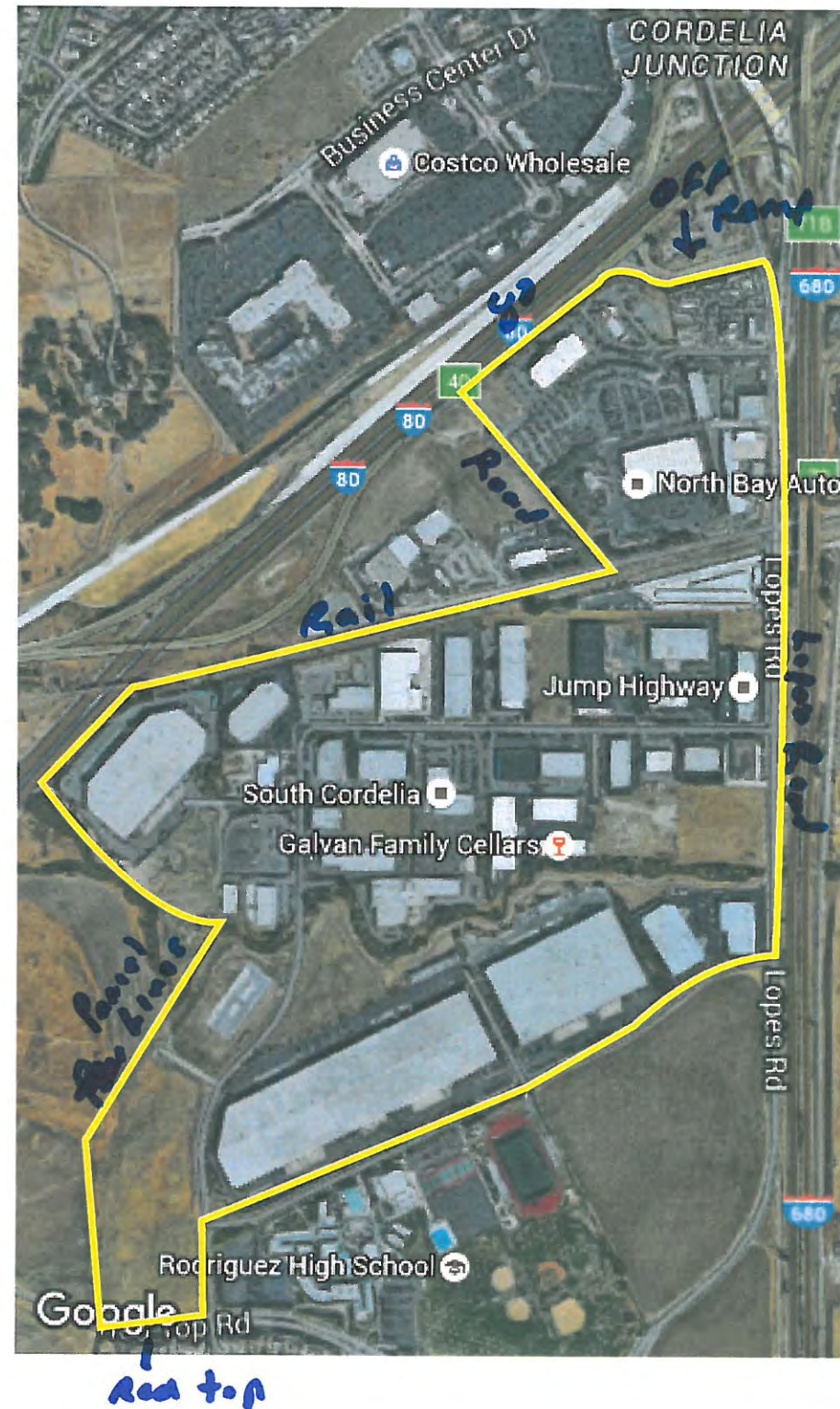


Interchange Business Park (Vacaville)

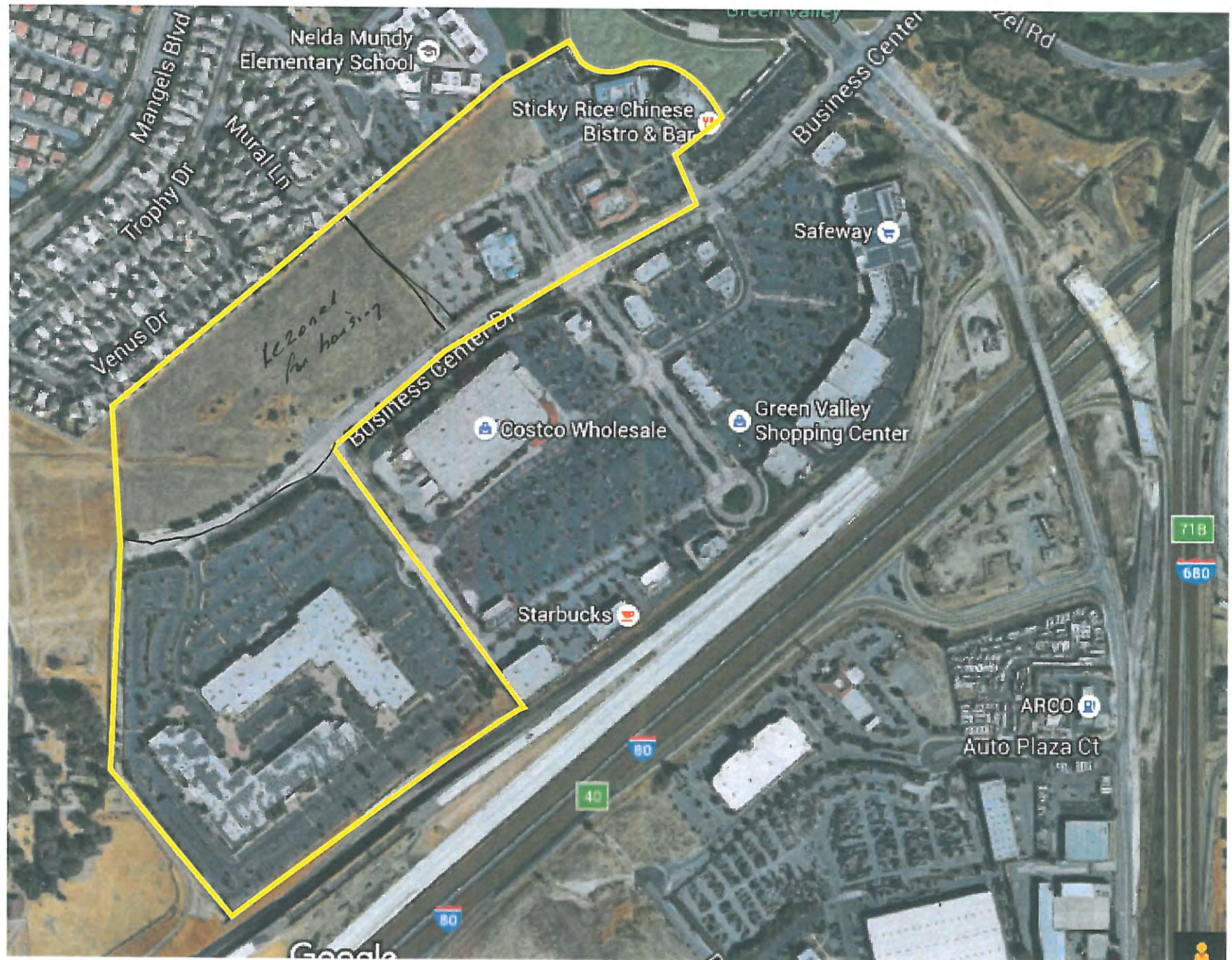




Cordelia Business Parks



Green Valley Office Park



Rio Vista Business Park





WHY SOLANO?