



Moving Solano Forward Phase II Working Paper

Task 5.1 – GIS Property Design Overview

Date: May 16, 2016

Robert Eyler, Economic Forensics
Audrey Taylor, Chabin Concepts
Michael Coogan, MC2 Design
Don Schjeldahl, DSG Advisors
Debbie Kern, KMA

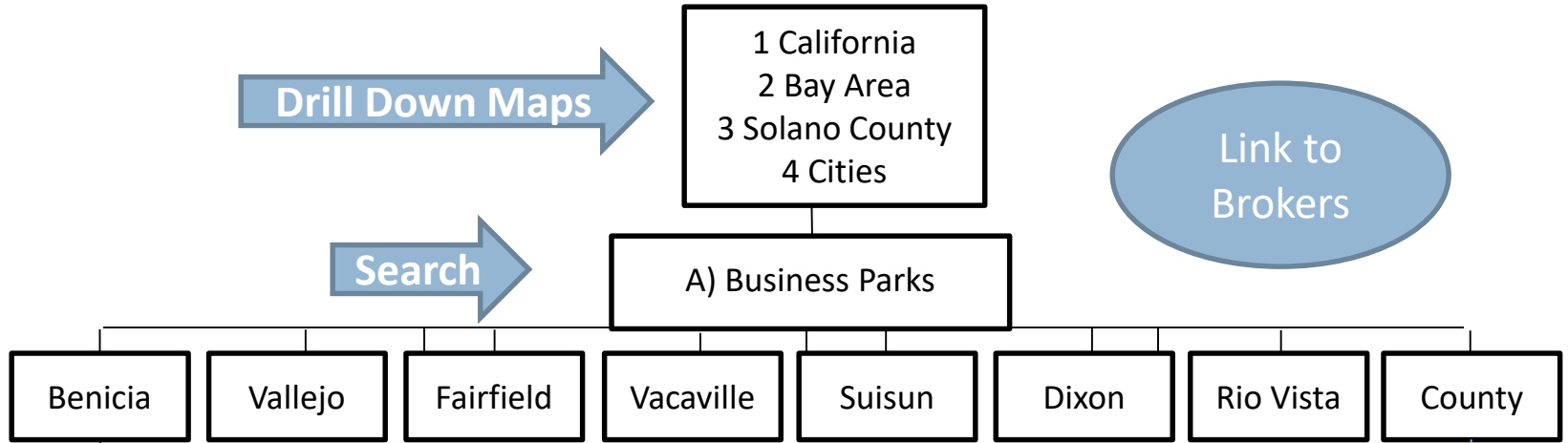
Property Search Design Concept

Regional

Drill Down Maps

Search

Link to
Brokers



Facility Types

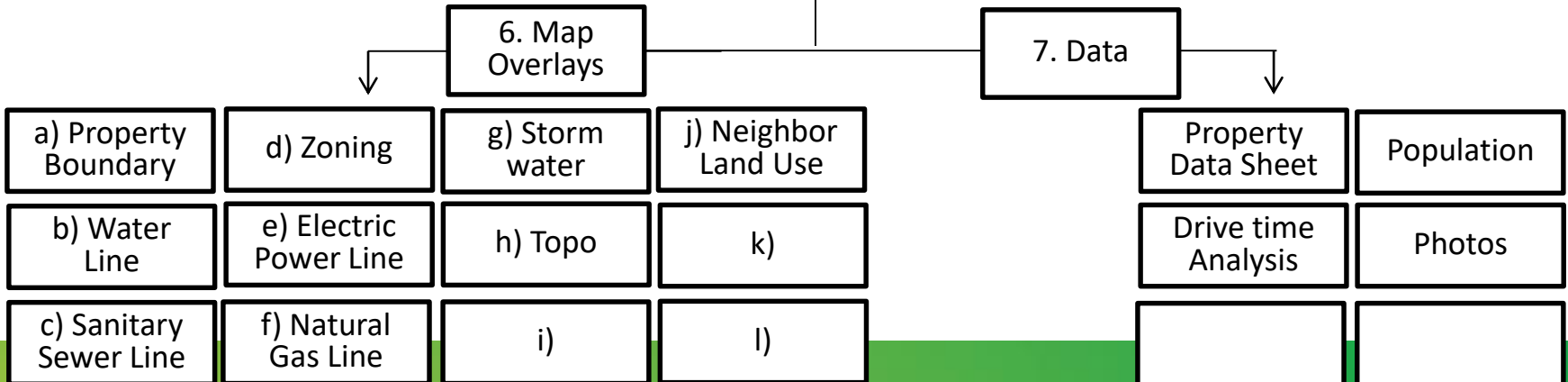
- Office Services
- Light Manufacturing
- Light Manufacturing
- Heavy Manufacturing
- Distribution

Clusters/Targets

- Manufacturing
- Food & Beverage
- Bio/Pharma
- Logistics

Map Scale

Local

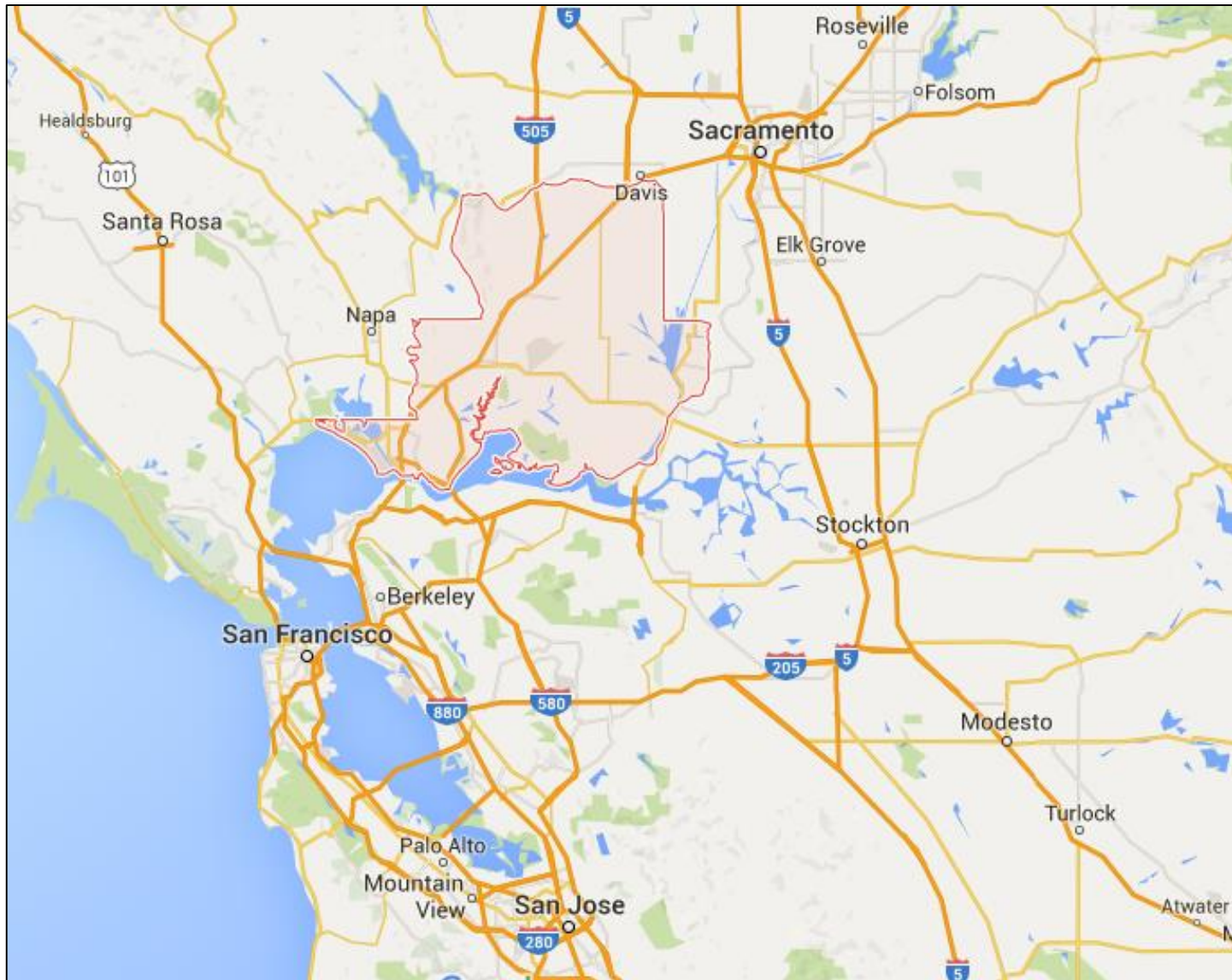


Drill Down - State View

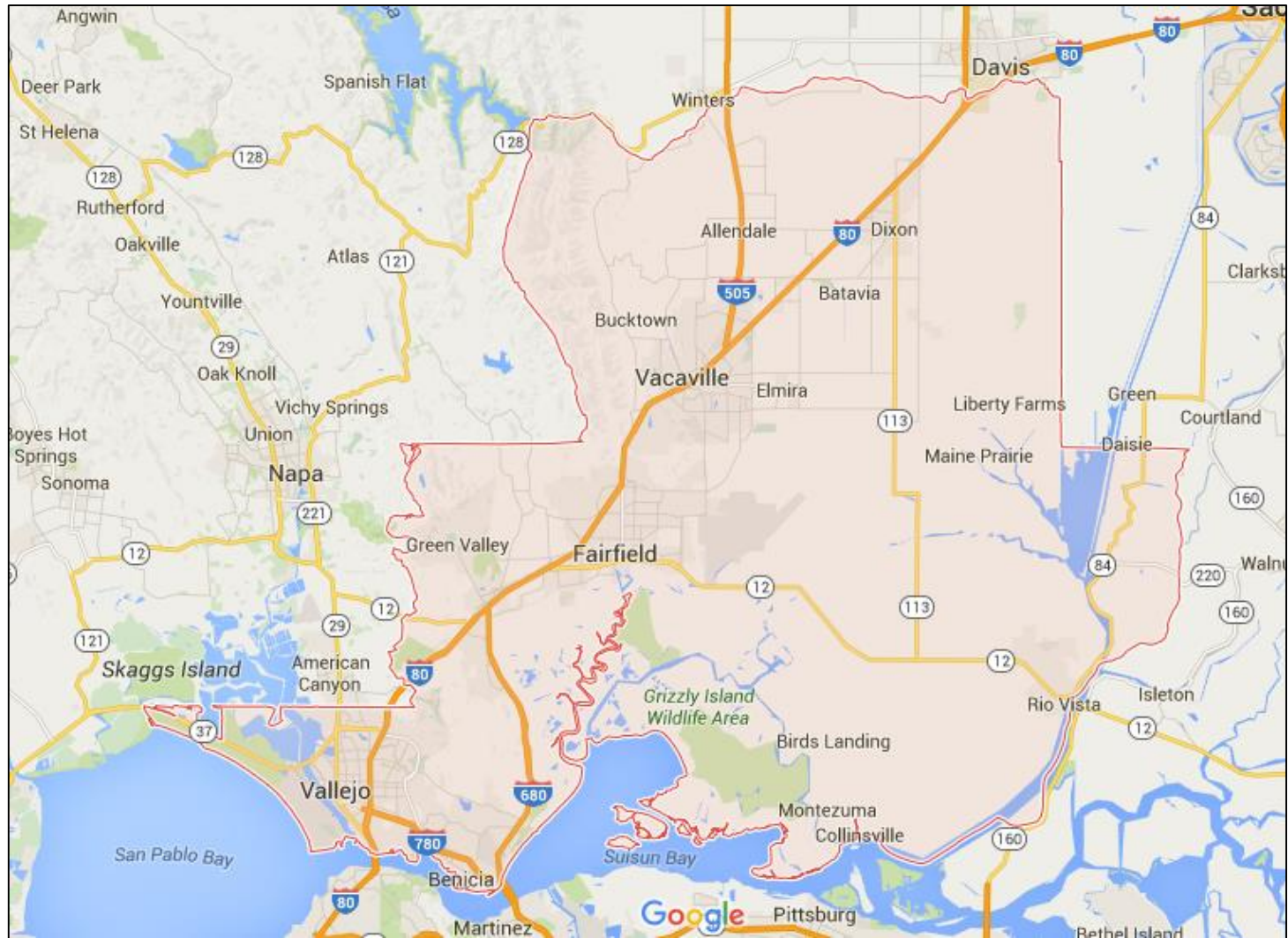


Demo: <https://invis.io/HG693CCZT>

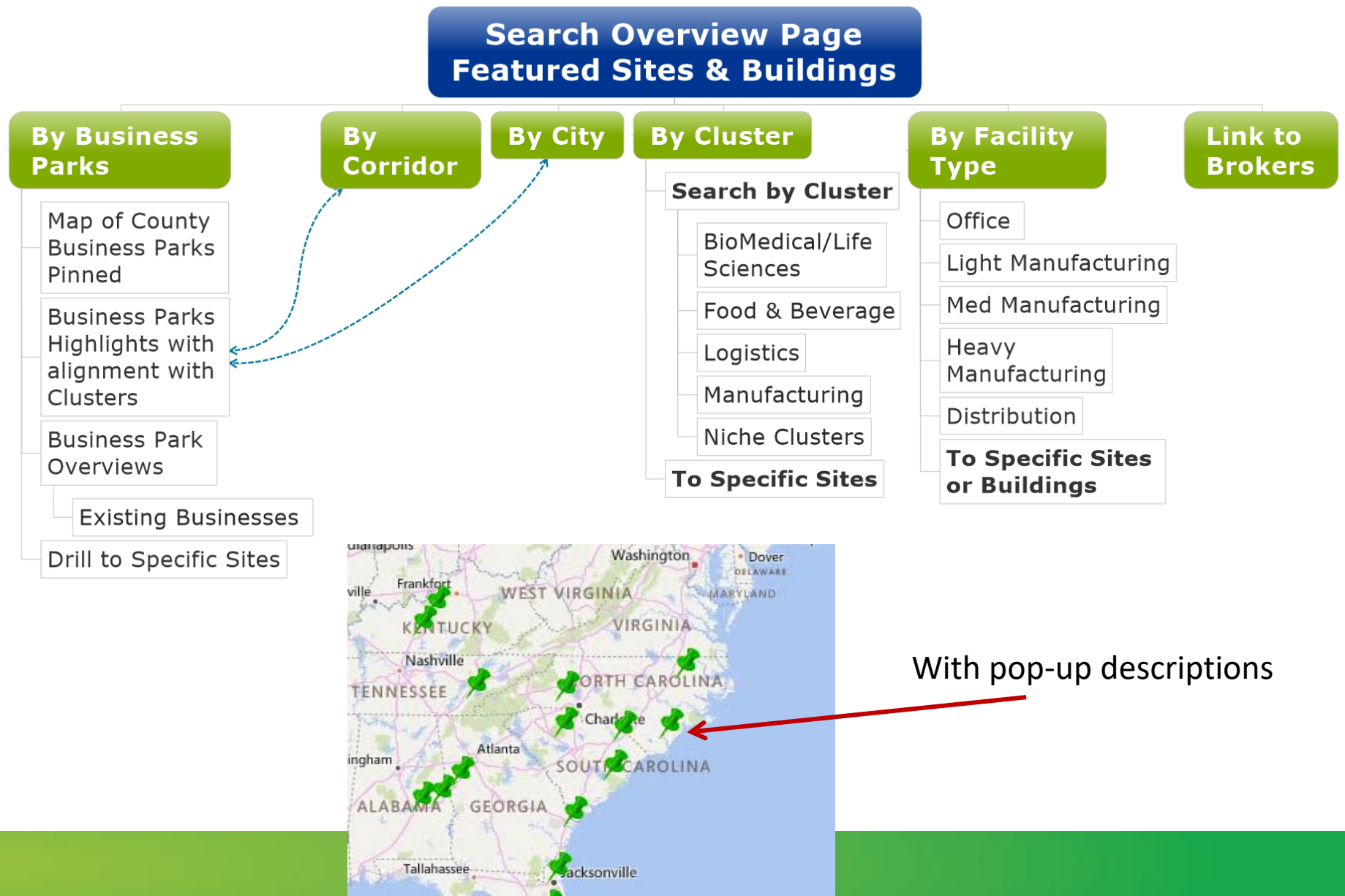
Regional View – Highlight Proximity



Solano County View – county outlined, cites shaded within boundaries



Search Capabilities

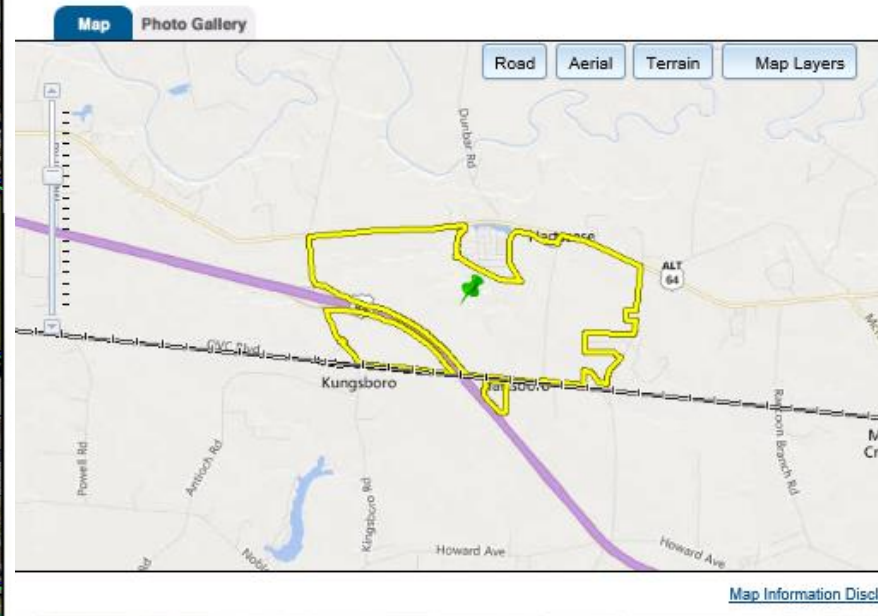


Business Park – Drill to Site Detail

BUSCH CORPORATE CENTER



Show Existing Businesses



Site Specific



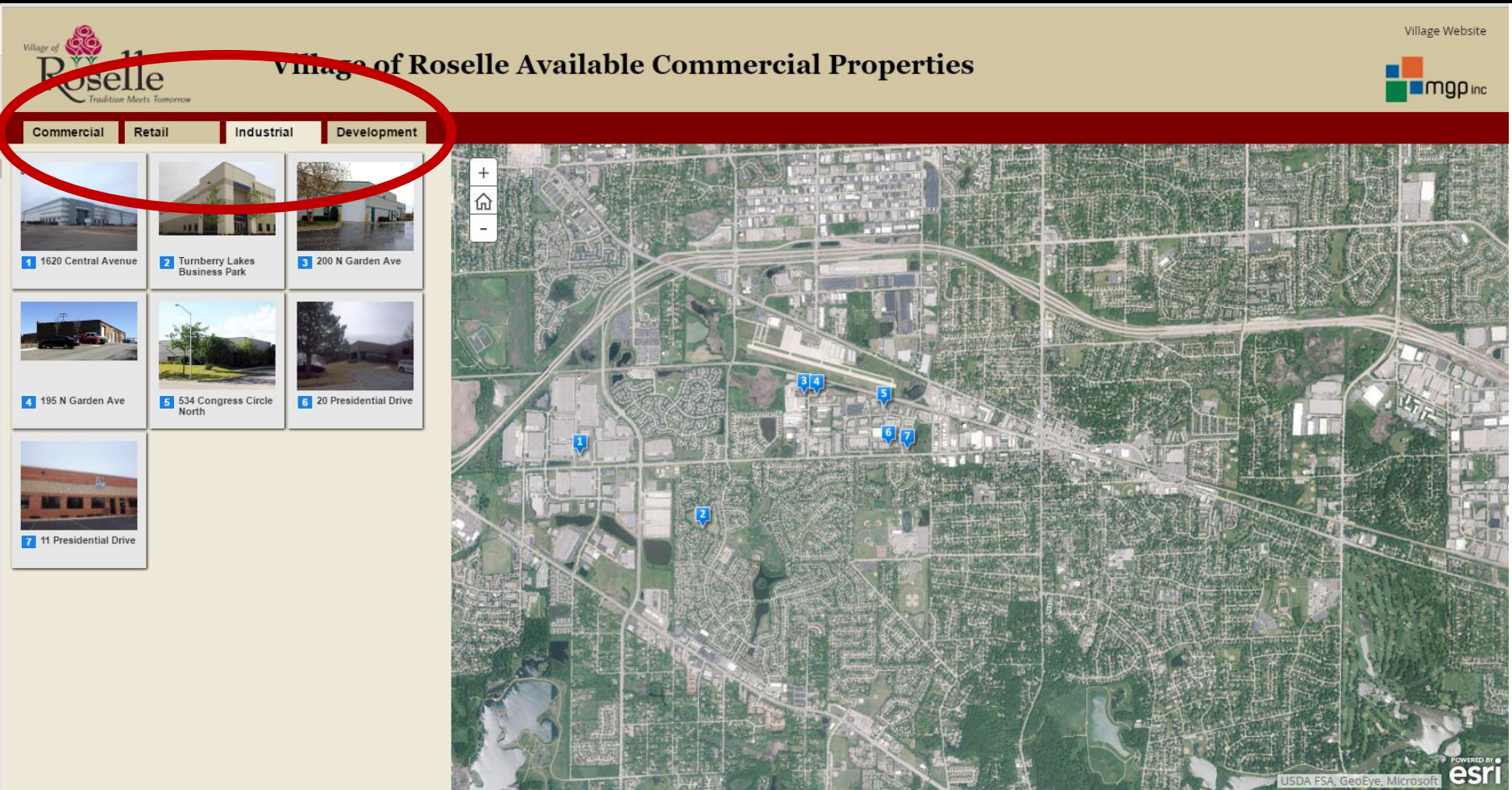
- GIS Maps with infrastructure
- Future plans in area
- Topo Maps
- Site Details including infrastructure capacity
- Ingress/Egress
- Photos
- Readiness
- Processing Time
- Potential Financing

Site Details	
Price	\$ 40,000 per acre
Land Area	306 acres
Zoning	PUD / Industrial
Road Access	U.S. Highway 17 (2.0 mi)
Highway Access	Interstate 95 (Exit 87) (5.0 mi)
Location Information	From Interstate 95 (Exit 87) follow U.S. Highway 17 south

Site Utilities	
Electricity	Coastal EMC
- Line 1 Voltage	25 kV
- Line 2 Voltage	115 kV
Natural Gas	Atlanta Gas Light
- Line 1 Size	6 inches
Water	City of Richmond Hill
- Line 1 Size	12 inches

PDF Download Available

Samples - GIS Story Maps

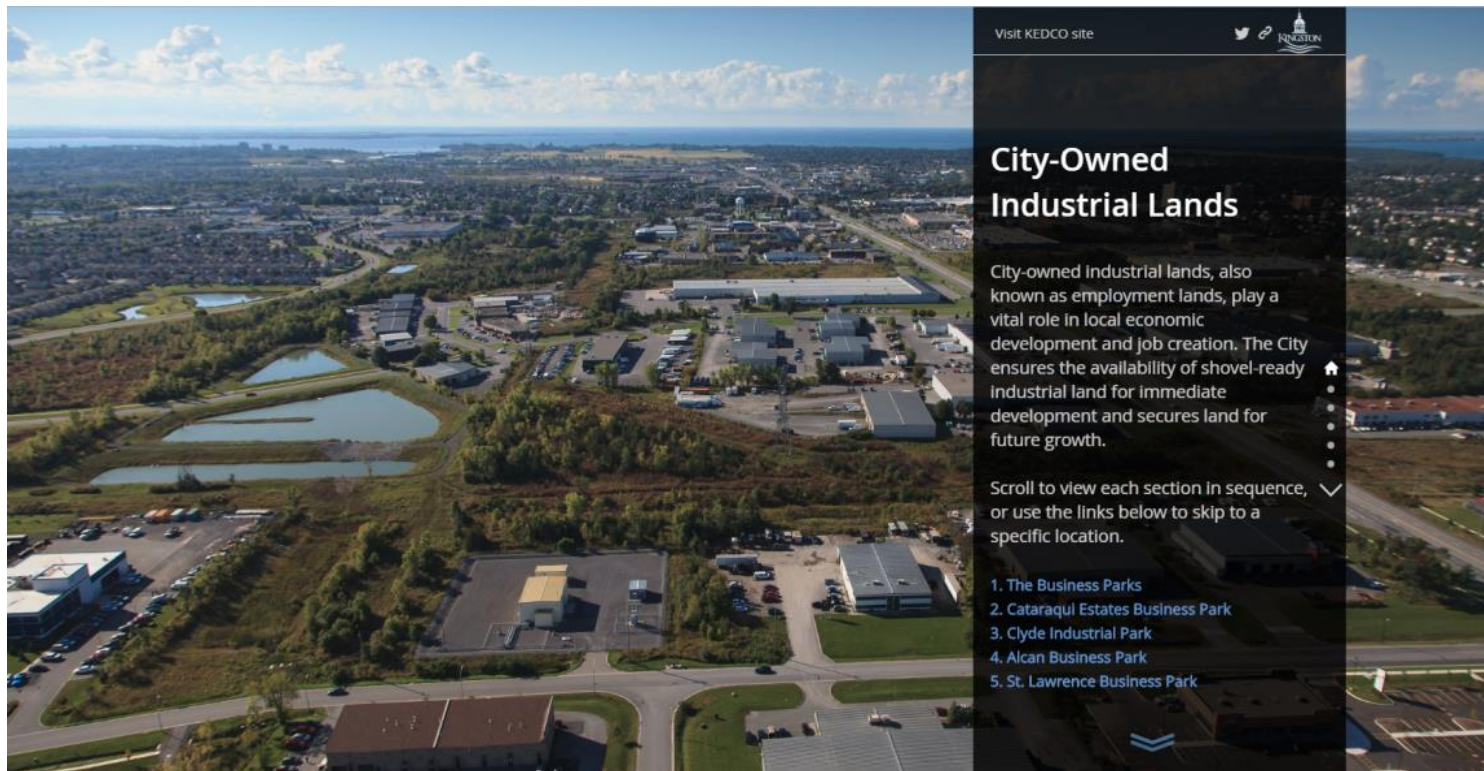


Search tabs are good

<http://maps.mgrpinc.com/Roselle/AvailableCommercialProperties/index.html>

Samples - GIS Story Maps

- Attractive for introduction to Business Parks and overall site



<http://cityofkingston.maps.arcgis.com/apps/MapJournal/index.html?appid=6193c31abcb841b1b98e2c741ba2cc47>

- Map base would be better showing the transportation routes....need county-wide then each city



- Good drill downs with business park, access from other search links?

City-Owned Industrial Lands

Cataraqui Estates Business Park

Cataraqui Estates Business Park is located in the west end of Kingston, approximately 1km south of Highway 401. It is prestige in character, accommodating a number of small to medium to large sized businesses including manufacturing and assembling operations, processing plants, warehousing and distribution facilities, and business or professional offices. The lands are a mix of Business Park Industrial and General Industrial uses. Lots range in size from 0.5 acre to 40 acre.

About the map:

- [Click here](#) to show available lots on the map
- Click on each lot to view details
- Click on the 'Back' button in the map window to return to original view

View and print sketches for available lots:

Lot 403	Lot 404	Lot 405	Lot 406
Lot 407	Lot 408	Lot 409	Lot 410
Lot 411	Lot 412	Lot 413	Lot 430
Lot 434	Lot 436	Lot 438	Lot 440
Lot 442	Lot 444	Lot 446	Lot 448
Lot 450	Lot 452		

Image Gallery:

Lot 448 - Available

Business Park	Cataraqui Estates Business Park
Lot Area	9.9 ac
Lot Frontage	207m
Lot Width	201.7m
Lot Depth	200m +/-
OP Designation	General Industrial
Zoning Bylaw	Kingston Township By-law 76-26
Zoning	M1-12
Price	\$110,000/acre

USDA FSA, DigitalGlobe, GeoEye, Microsoft, CNES/Airbus DS | Corporation of the City of Kingston

POWERED BY **esri**

Map Photo Gallery



Site Details

Price	\$ 40,000 per acre
Land Area	306 acres
Zoning	PUD / Industrial
Road Access	U.S. Highway 17 (2.0 mi)
Highway Access	Interstate 95 (Exit 87) (5.0 mi)
Location Information	From Interstate 95 (Exit 87) follow U.S. Highway 17 south

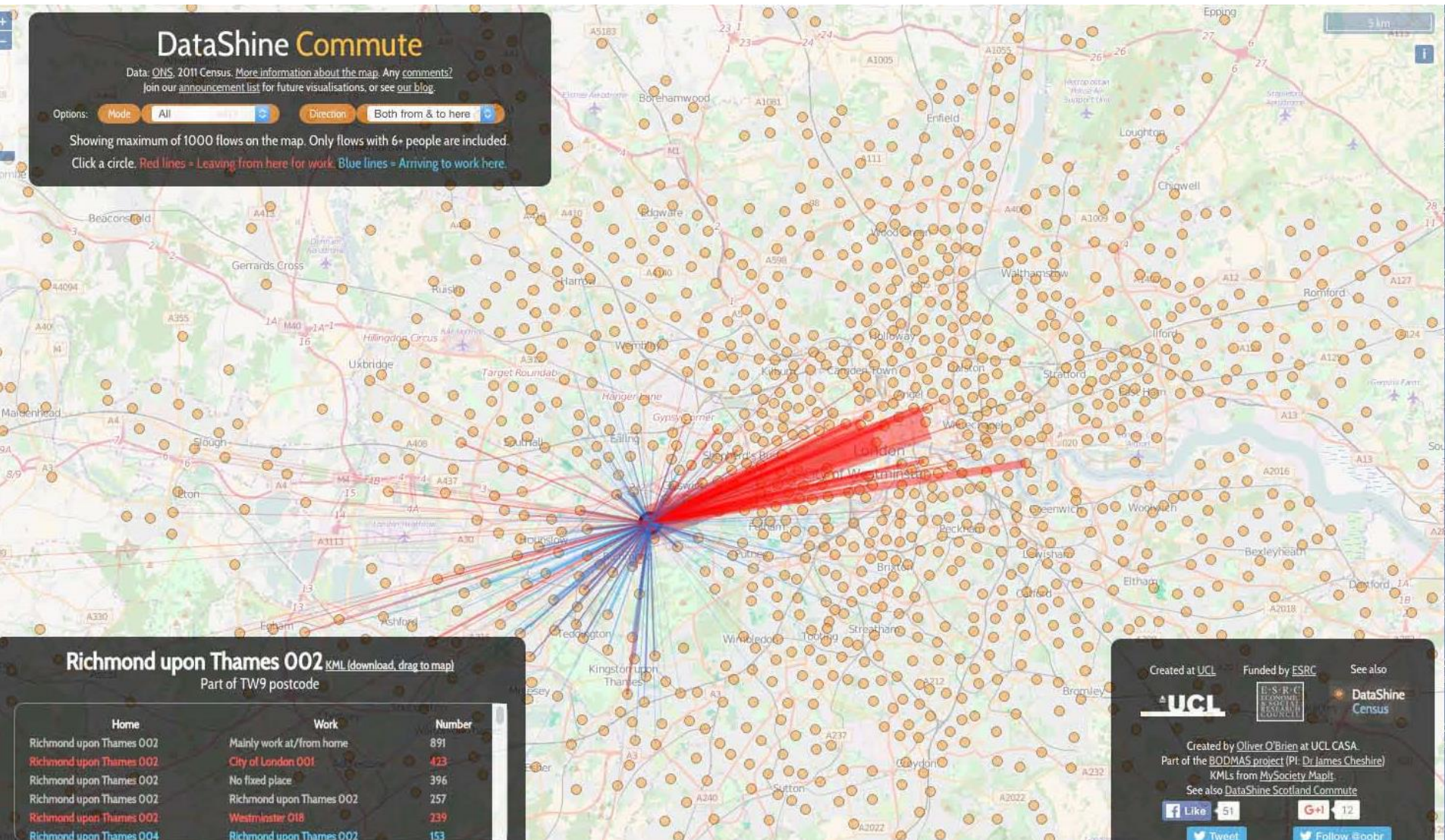
Site Utilities

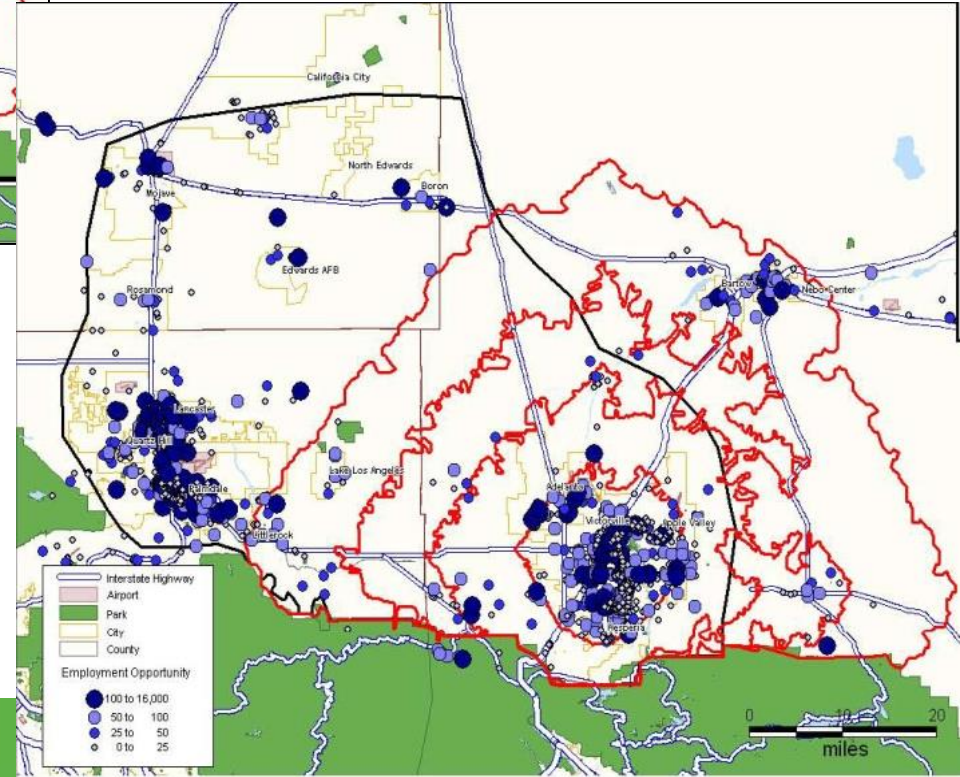
Electricity	Coastal EMC
- Line 1 Voltage	25 kV
- Line 2 Voltage	115 kV
Natural Gas	Atlanta Gas Light
- Line 1 Size	6 inches
Water	City of Richmond Hill
- Line 1 Size	12 inches

- Site specific maps
- GIS of infrastructure – utility lines, transportation, capacity
- Future plans
- Detail sheets
- Be able to download pdf

<https://www.csx.com/index.cfm/customers/industrial-development/search-property-types/csx-select-sites/detail/?i=1D914D4A-0F5F-C7BF-DD9AB0A253460E67>

Laborshed & Commute Shed





These maps are then supported with data tables, occupation by industry and education level – in & out



WHY SOLANO?